

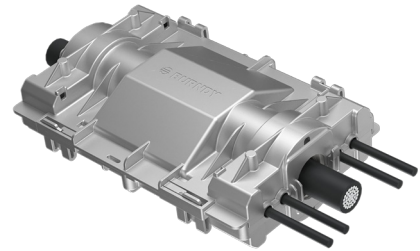
Aluminum Insulation Piercing Compression Connector

TYPE YIPC H-Tap Aluminum HYPIERCE CRIMPIT™

UL Listed sealed wire connector product family designed to deliver value while meeting the required solar electrical, mechanical, and environmental performance standards.



SEALED WIRE CONNECTOR SYSTEM
RAINTIGHT & SUNLIGHT RESISTANT



Features & Benefits

Connector & Cover Assembly:

- Product is sold as a kit: connector, cover, and installation instructions
- UL Listed Sealed Wire Connector System with Raintight Rating and Sunlight Resistance. Category ZMWQ tested in accordance with UL 486D
- Voltage Rating: 1.5 kV
- Dead-end 2kV Cold Shrink End Caps for Main/Run conductor are sold separately to use in dead-end application, see next pages for more information

CAUTION: BURNDY certifies and ONLY warranties the use of this product with the BURNDY Engineered System

Connector:

- Uninsulated tin-plated aluminum compression insulation piercing connector
- Compliant with UL 486A-486B
- Piercing Features: Main / Run groove has three (3) insulation piercing teeth and two (2) insulation piercing legs to maintain connectivity and thermal stability
- Main / Run Wire Accommodates: Intended to be used with compact stranded aluminum PV cable, rated 2 kV and 90°C. Tap wires cannot be used in combination. *Example:* Using 8 AWG tap wire, all four tap wires must be 8 AWG. See table below for Insulation OD range.
- Installers are required to use one (1) to four (4) tap wire ports per crimp. Unused ports can be left empty
- Tap wire requires stripping (see next pages for information on RIPLEY® Collar and Stripping Bushings - sold separately)

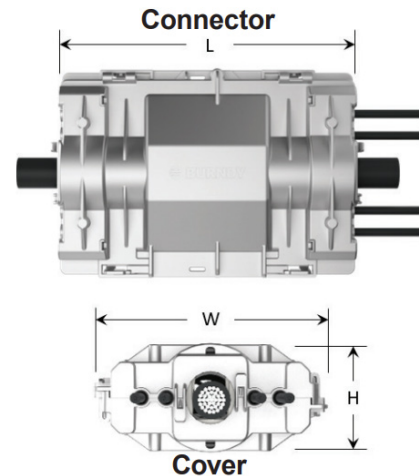
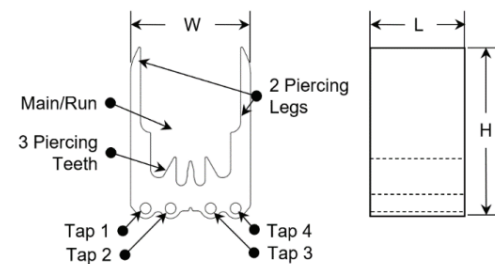
Cover:

- Two-piece insulation cover allowing wires to enter and exit from both sides
- Snaps together with eight (8) locking features that require a tool to open, deterring continuously opening and closing the cover
- One time use cover. Any warranty is void if cover is reused. If cover removal is necessary, a new cover is required.
- Voltage Rating: 1.5 kV
- Polycarbonate material: UL 94 V-0 flame rating and sunlight / UV resistant
- Main/Run and Tap wire alignment guides ensure wires seat in the gel properly
- Strain relief locking arms provide stress and tension relief at the connection and help constrain assembly during installation
- Connector placement guide for proper seating of connector
- Full perimeter raintight gel-seal when covers are mated
- Tap wires may be used in reverse direction inside the cover. If you intend to use this feature, installers are required to use the other two (2) tap ports of the connector

Wire Stripping Tool: *Tap Wires

- RIPLEY® Collar and Stripping Bushings - sold separately (see next pages for more information)

Connector & Cover Assembly:



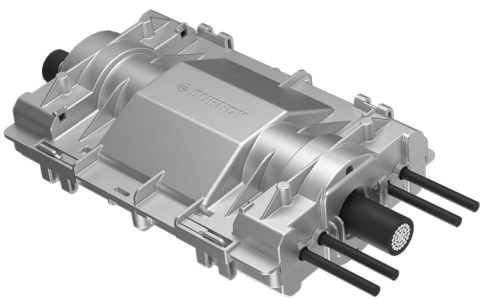
Catalogue Number	Wire Accommodates								Connector			Cover		
	Run Conductor (AL)		Tap Conductor (CU)						Height (H)	Width (W)	Length (L)	Height (H)	Width (W)	Length (L)
	Insul. OD Range	Cond. Size	Insul. OD Range	Tap 1	Tap 2	Tap 3	Tap 4	Wire Strip Length						
YIPC348CWC	0.96-1.00"	500 kcmil	.23-.33"	10-8 AWG	10-8 AWG	10-8 AWG	10-8 AWG	1-1/4"	2.15"	1.50"	1.00"	2.95"	6.56"	9.70"
YIPC368CWC	1.06-1.11"	600 kcmil	.23-.33"	10-8 AWG	10-8 AWG	10-8 AWG	10-8 AWG	1-1/4"	2.30"	1.50"	1.00"	2.95"	6.56"	9.70"
YIPC398CWC	1.16-1.20"	750 kcmil	.23-.33"	10-8 AWG	10-8 AWG	10-8 AWG	10-8 AWG	1-1/4"	2.45"	1.50"	1.00"	2.95"	6.56"	9.70"

Aluminum Insulation Piercing Compression Connector

TYPE YIPC INSTALLATION TOOLING

Installation instructions help the installer understand proper wire preparation, proper insertion requirements, crimp zone location, individual crimp location, crimp order, and crimp direction to ensure safe and reliable wire connections.

Installation instructions help the installer understand proper wire preparation, proper insertion requirements, and proper installation methods to ensure safe and reliable wire connections.



Upper Die:

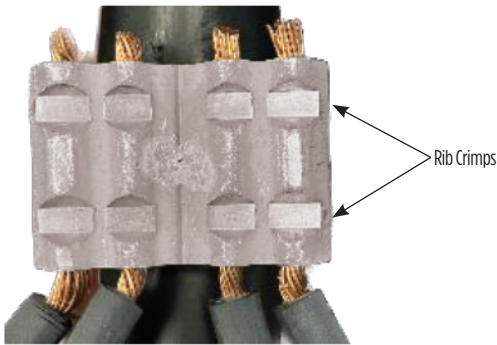
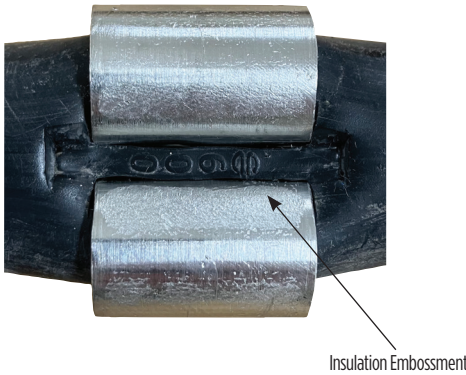
- “M” shaped profile designed to curl the two (2) piercing legs through the main/run conductor insulation
- Die will emboss the BURNDY “Bug” logo and wire size in the insulation for post-crimp inspection

Lower Die Designed with 2 Key Features:

- Ribs: two (2) parallel ribs crimp the tap wire(s) evenly during installation
- Backstop: Intended to rest and properly align the connector in the dies for crimping



Kit Catalogue Number	Installation Tooling				
	Die Halves	Die Catalogue Number	Number of Crimps	Upper Die Embossment	Tool Series
YIPC348CWC	Upper	PIPC34U	1	500	46 Series
	Lower	PIPC34L			
YIPC368CWC	Upper	PIPC36U	1	600	46 Series
	Lower	PIPC34L			
YIPC398CWC	Upper	PIPC39U	1	750	46 Series
	Lower	PIPC34L			



YIPC Connector as Dead-end; Cold Shrink End Cap, Wire Stripper

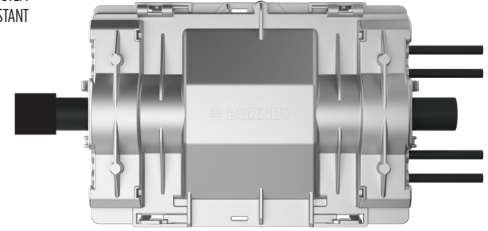
TYPE YIPC H-Tap Aluminum HYPIERCE CRIMPIT™ with Type CSEC Cold Shrink End Caps

The YIPC H-Tap connectors used in conjunction with the Type CSEC Cold Shrink End Caps are suitable for Dead-end applications.

Cold shrink applied end cap sealing products are made of specially formulated EPDM Rubber (Ethylene Propylene Diene Monomer) providing excellent moisture, acids, alkalis and weather resistance. End caps provide a constant pressure on the conductor to contract and expand as needed along with the cable. Installs quickly and easily, no special tools required. Operating temperature range: -40°C to 105°C.



SEALED WIRE CONNECTOR SYSTEM
RAINTIGHT & SUNLIGHT RESISTANT



CSEC3 - Cold Shrink End Cap
1.02"-1.94" min/max diameter
application range, rated up to
2kV

YIPC Catalogue Number	Run Conductor (AL)		Tap Conductor (CU)		
	Conductor Size	Dead-End Cold Shrink End Cap	Conductor Size	RIPLEY® Wire Strip Tools	
				Collar	Bushing
YIPC348CWC	500 kcmil	CSEC2	10 AWG	40100	10-27550
			8 AWG		10-32560
YIPC368CWC	600 kcmil	CSEC3	10 AWG	40100	10-27550
			8 AWG		10-32560
YIPC398CWC	750 kcmil	CSEC3	10 AWG	40100	10-27550
			8 AWG		10-32560

*Type CSEC Cold Shrink End Caps must be ordered in multiples of package quantity (6)



**Wire stripping collar and bushings
for compression flexible trunk solutions**



40100, Ripley

WS68 Snap with 3/8" Drill Drive



10-32560, Ripley

2 x 2 Plus and 4 x 4 Plus
Bushings, Square Cut, 8 AWG



10-27550, Ripley

2 x 2 Plus and 4 x 4 Plus
Bushings, Square Cut, 10 AWG

Cold Shrink End Caps Type CSEC (Low-Voltage Conductor)

Type CSEC

Cold Shrink End Caps

These cold applied end cap sealing products are made of specially formulated EPDM Rubber (Ethylene Propylene Diene Monomer) providing excellent moisture, acids, alkalis and weather resistance. End Caps provide a constant pressure on the conductor to contract and expand as needed along with the cable. The rubber end caps are factory expanded and applied over a removable plastic rip core housing. Installs quickly and easily with no tools needed. Operating temperature range: -40°C to 105°C.



Features & Benefits

- Easy, safe installation
- Resists abrasive conditions
- Suitable for a wide range of cable sizes
- UV Resistance, thermal stability
- No special tools or training required
- Water resistant
- No heat or torches required
- Superior, time-saving insulation technology
- Resists acids and alkalis
- Indoor and Outdoor applications
- No training required for installation
- Easily removed with a utility knife

Cold shrink end caps type CSEC

Catalogue Number	Cord ID	Application Range (min-max diameter)	Pre -Shrunk Length	After-Shrunk Thickness	UOM	Qty Per Bag
CSEC1	0.98"	0.46" [11.6] - 0.82" [20.9]	2.08" [52.8]	.098"	EA	6
CSEC2	1.38"	0.63" [15.9] - 1.18" [30.1]	2.50" [63.5]	.118"	EA	6
CSEC3	2.17"	1.02" [26.0] - 1.94" [49.2]	2.25" [57.2]	.138"	EA	3
CSEC4	3.54"	1.79" [45.5] - 3.32" [84.3]	2.50" [63.5]	.138"	EA	3

*Products must be ordered in multiples of package qty.

