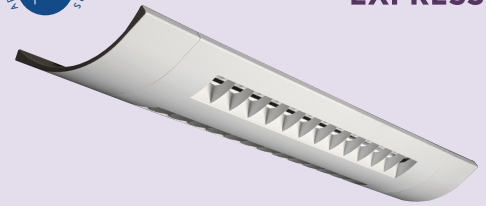


CVSL/CVPL

curVista

FEATURES

- Direct/indirect with side louvers
- Elegant, sophisticated appearance
- 20-gauge steel housing with aluminum die cast components
- Choice of solid (CVSL) or perforated (CVPL) louver blades
- Two, three, or four T8, T5, or T5HO lamps in cross section
- Flat end caps standard (5/16")
- Available with optional installed open or closed loop daylight sensors (DSPL, DSL) when daylight dimming systems are desired
- Patented die cast aluminum joining system (Patent# 6,796,676 B2) ensures straight rows
- Variable optical distribution covers easily change uplight and downlight distribution without tools
- Modular mounting points for convenient hanging locations
- UL listed 1598, cUL or CSA, damp location standard.



curVista.

Shown with optional SCE end cap.

CURVES

ORDERING INFORMATION

MODEL	LAMP TYPE & PROFILE	MOUNTING METHOD	OVERLAY	VOLTAGE	FINISH	OPTIONS
CVSL curVista Solid Baffle	2T5 2 T5 Lamps 3T5 3 T5 Lamps 4T5 4 T5 Lamps	FCM18 Fixed Cable Mount (2-Lamp only) 18"	Blank None (Std.)	U 120V-277V	MW Matte White (Std.)	DC Dust Cover (N/A T5HO) ⁵
CVPL curVista Perf Baffle	2T5HO 2 T5HO Lamps 3T5HO 3 T5HO Lamps 4T5HO 4 T5HO Lamps	CM Adjustable Aircraft Cable Mount (Std.)	OLAY Acrylic Lens Overlay (Above baffles; for dust cover see Options)	120 120V 277 277V 347 347V	ZT ZET Metallic Silver	SCE Sculpted curVista End Cap (5 5/16") ⁵
	2T8 2 T8 Lamps 3T8 3 T8 Lamps 4T8 4 T8 Lamps				See Color Selection Guide for other color selections.	BN Bull Nose End Cap (5 5/16") ⁵
						LR Left/Right Switching (2-Lamp only)
						IBOB Inboard/Outboard Switching (3-Lamp only)
						EL One Emergency Battery Pack ^{2,3}
						F0841 With T8 4100K Lamp Installed
						F5841 With T5/T5HO 4100K Lamp Installed
						F0835 With T8 3500K Lamp Installed
						F5835 With T5/T5HO 3500K Lamp Installed
						EMC One Emergency Circuit ^{3,4}
						NLC Night Light Circuit ^{3,4}
						GLR Fast Blow Fuse
						GMF Slow Blow Fuse
						TBAR T-Bar Mounting

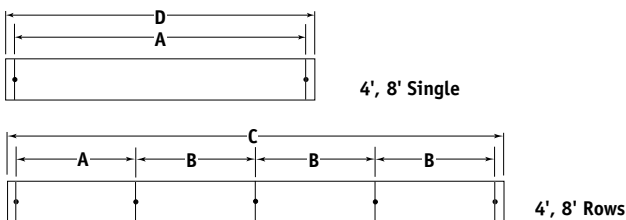
ROW LENGTH	DISTRIBUTION	SUSPENSION LENGTH (CM)	BALLAST
4 4' Single	Blank 70% Uplight, 30% Downlight	48 48"	E Electronic, Instant Start (Std. for T8)
8 8' Single	50/50 50% Uplight, 50% Downlight ^{5,1}	96 96"	EP Electronic, Programmed Start (Std. for T5 & T5HO, optional for T8)
— Indicate row length over 8' in 4' increments	40/60 40% Uplight, 60% Downlight ^{5,1}	144 144"	ED Electronic, Dimming (Must specify)
	(Will vary with lamp and shielding options)	Other lengths available on request.	ESD Electronic, Step Dimming
			EDUMK7 Universal Voltage, Electronic Dimming Philips Advance Mark 7 (0-10V) ³
			EDULUTES Universal Voltage, Lutron EcoSystem Digital Dimming Ballast ^{3,6}

Unless specified, Alera will use fewest ballasts possible.

Note: Rows over 8' will be configured by Alera. Example: 16' will be (2) 8'. Alternate configurations: contact factory.

¹ Dust cover not available when using optical distribution covers.
² Specify voltage. For additional, specify quantity before nomenclature (Example: 2EL120).
³ Not available with all configurations; some limitations apply. Contact factory for details.
⁴ One extra feed drop per row. (Standard is one 4ft lamp per circuit.)
⁵ Ships separately.
⁶ Lutron EcoSystem Series Ballast. Contact factory for other Lutron Ballasts.

MOUNTING INFORMATION

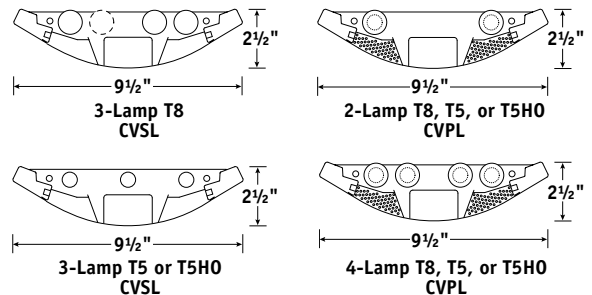


DATA CHART

NOMINAL LENGTH	APPROX. WEIGHT (LBS.)		A	B	C	D
	2-LAMP	3-LAMP				
4'	17.1	19.4	47 1/4"	48"	192 5/8"	48 5/8"
8'	28.6	30.9	95 1/4"	96"	384 5/8"	96 5/8"

Note: Suspension data is computed using the standard aircraft cable assembly. The use of rigid stems will yield different data. Please consult factory for stem data. Calculations include standard flat end caps.

CROSS SECTIONS



Name:	CVPL-2T8-70/30-E
Test #:	13801
Efficiency:	92.9%
LER:	75

Definitions on page 182.

