

FACTOR Extra Large Flood

Extra large LED flood with a variety of NEMA distributions for lighting applications such as safety/security, accent, flag pole, columns, facade, area, or signs

- Rugged die-cast aluminum housing with dark bronze finish
- Tempered glass lens protects LEDs and allows for easy cleaning/debris removal
- Vented housing isolates LED module from driver, maximizing product life and performance
- Visor, louver and vandal accessories available
- 56 high powered LED's
- 84 high powered LED's
- MTO Versions: 3000K CCT nominal with 80 CRI, 4000K and 5000K CCT nominal with 70 CRI

- Variety of NEMA distributions - N (2x2), M (4x4), RM (5x3) and W (6x6) - for wide range of lighting application
- Stock version Wide (6x6) only
- 120-277V, 347V and 480V operation, 50/60Hz
- Driver 700mA, RoHS compliant and IP66
- 0-10V dimming driver standard, order CD options to have dimming leads extended
- 20KA surge protector (over current device) option available with end of life feature
- Yoke or knuckle mount options
- IP65, Listed to UL1598 for use in wet locations
- Select Models DLC Standard and DLC Premium Qualified. Consult DLC website for more details: <https://www.designlights.org/QPL>



LED FLOODLIGHTING

STOCK ORDERING INFORMATION

Catalog Number	Mount	Max Candle Power	Beam Pattern	Wattage	Drive Current	Voltage	Color Temperature	Lumens	LPW	Weight lbs. (kg)	Finish
FXL-190-Y	Yoke	13804	Wide	195w	700mA	120-277V	5000K	20892	108	36.2 (16.4)	Bronze
FXL-190-4K-Y	Yoke	15591	Wide	187w	1050mA	120-277V	4000K	20610	106	36.2 (16.4)	
FXL-190-K	Knuckle	13804	Wide	195w	700mA	120-277V	5000K	20892	108	36.2 (16.4)	
FXL-190-4K-K	Knuckle	12925	Wide	195w	700mA	120-277V	4000K	19061	99	36.2 (16.4)	

MADE-TO-ORDER ORDERING INFORMATION

FXL - [] - [] - [] - [] - [] - [] - [] - [] - [] - []

FAMILY	# LEDS	WATTS	CCT	DISTRIBUTION	VOLTAGE	MOUNTING	FINISH	CONTROL OPTION	OPTIONS
FXL FACTOR Flood Large	56L 56 LED 84L 84 LED	190 187W/ 195W*	3K 3000K 4K 4000K 5K 5000K	N 3x3 M 4x4 RM 5x4 W 6x6	U 120V-277V 1 120V 2 208V 3 240V 4 277V 5 ¹ 480V F ¹ 347V	K Knuckle Y Yoke	DB Bronze BL Black WH White GR Gray PS Platinum silver CC Custom Color	PC Photocontrol (voltage specified and determined by voltage field) CD Continuous dimming 7PR 7-pin ANSI twist-lock photocell receptacle SWP ² SiteSync pre-commissioned	F Fusing (voltage determined by voltage field) SP Surge Protector, 20KA Surge Protector

* 56L=187W, 84L=195W

¹ Only available in 84L version

² Consult specification sheet for details

STOCK ACCESSORIES/REPLACEMENT PARTS - (ORDER SEPARATELY)

Catalog Number	Description
FLL-VISOR-DB	Top/Bottom visor (Tap holes in lens frame for field installation)
93058186	96w, 120-277V driver, 1050mA (2 Qty per fixture)
FLL-LOUVER-BL	Black adjustable louver (order 2 per fixture)
ARF-SPC	Polycarbonate vandal shield
4024C	Steel slipfitter for 2" pipe, 2 3/8" OD yoke mount, Bronze finish
4040	Heavy-duty steel wall/pole bracket; bronze Lektrocote®
FLL-LENS	Replacement glass with gasket and hardware for FXL (2 QTY per fixture)
ARF-SPC	Polycarbonate vandal shield (order 2 per fixture)
93053187	FXL84, 96w, 120-277V Dimming driver, 700mA (2 Qty per fixture)

¹ Specify finish color to match fixture; e.g. DB - Dark Bronze

ADDITIONAL ACCESSORIES ON PG. 214-217

SiteSync See PG. 406-407

EQUIVALENCY INFORMATION

Equivalency			Energy Savings
MH	HPS	CFL	
400w-750w	400w	2x42w+	66%

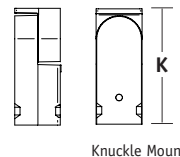
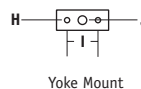
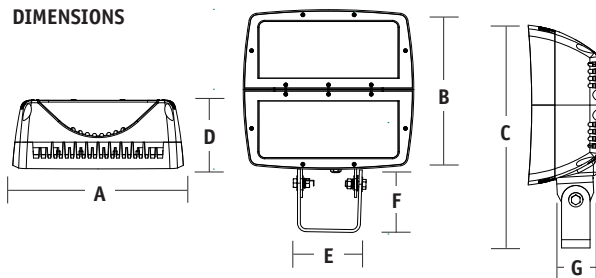
FLL-LOUVER-BL



FLL-VISOR-XX



DIMENSIONS



K	L	M
7.57"	2.9"	3.0"
192 mm	75 mm	77 mm

A	B	C	D	E	F	G	H	I	J	Weight
15"	14.0"	19.6"	6.0"	5.5"	6.24"	3.3"	17/32"	3-1/8"	7/8"	36.2 lbs.
380 mm	356 mm	498 mm	152 mm	139 mm	158 mm	84 mm	14 mm	79 mm	22 mm	16.4 kg



HUBBELL
Outdoor Lighting