

# QL

## Quartzlitter® Series – Industrial Grade

FLOODLIGHTING



- Die-cast aluminum housing and door, deep fin system maintains rated lamp life
- High temperature lens, silicone gasket, tool-free stainless latch entry
- Large 1/2" swivel knuckle provides versatile aiming
- QL produces a wide uniform beam with true color rendering
- QL505 suitable for 300-500w lamps, QL1505 suitable for 900-1500w lamps
- Models available with or without lamp, consult listings
- Gray finish is available
- Listed to UL1598 for use in wet locations

### ORDERING INFORMATION

Catalog Number	Max. Watts	Housing Finish	NEMA Beam Spread H° x V°	Weight lbs. (kg)	EPA ft² (m²)
<b>Lamp Not Included</b>					
<b>QL-1505<sup>1</sup></b>	1000/1500	Gray	6(115°) x 5(78°)	6 (2.7)	.9 (0.1)
<b>QL-505</b>	300/500	Gray	5(88°) x 5(82°)	4 (1.8)	.5 (0.1)

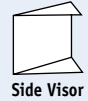
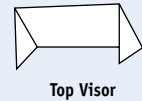
- 1 Do not aim at ±10° from horizontal or higher
  - 2 Fixture voltage is controlled by lamp voltage rating
- Note: Do not operate on voltage higher than lamp voltage rating, shortens lamp life and increases heat stress within the fixture

### REPLACEMENT PARTS

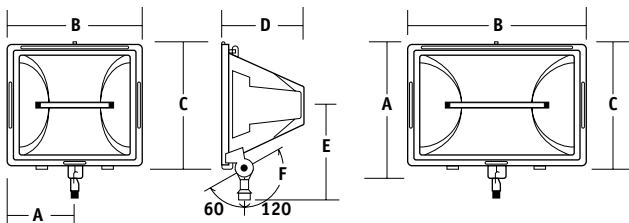
Catalog Number	Description
<b>26401849803</b>	Glass lens QL505
<b>26401839805</b>	Glass lens QL1505
<b>20750110214</b>	Knuckle, gray
<b>80021660108</b>	Replacement socket QL505
<b>705327</b>	Replacement socket QL1505

### ACCESSORIES - Order Separately

Catalog Number	Description	Weight lbs. (kg)
<b>QL-505 Series</b>		
<b>QL-5G</b>	Wire guard (2 inch square grid)	1 (0.5)
<b>QL-VS</b>	Top/side visor (max use two - at 180°)	.5 (0.2)
<b>26100119905</b>	500w 120V Quartz lamp	-
<b>QL-1505 Series</b>		
<b>QL-15G</b>	Wire guard (2 inch square grid)	1.3 (0.6)
<b>QL-15V</b>	Top visor / bottom visor	1.3 (0.6)
<b>QL-VS</b>	Side visor (will not work with QL-15V on same fixture)	.5 (0.2)
<b>26100149902</b>	1500w 240V Quartz lamp	-
<b>QL-500 / QL-1500</b>		
<b>S-302</b>	Pole top slipfitter for 1/2" swivel knuckle; slipfits 2 3/8" OD pipe; gray finish	.8 (0.4)
<b>S-302-M51</b>	Pole-top slipfitter for 1/2" knuckle, slipfits 2 3/8" OD pipe; bronze finish	.8 (0.4)
<b>TRN-XX<sup>1</sup></b>	Trunnion adaptor for 1/2" threaded knuckle mount	.5 (0.2)



1 Specify color, eg. DB - Dark Bronze



	A	B	C	D	E	F
QL-505	4 5/16"	8 5/8"	8 1/2"	5 1/4"	7"	2 1/2"
	110 mm	219 mm	216 mm	133 mm	178 mm	64 mm
QL-1505	4 1/2"	14"	8 1/2"	5 1/4"	7"	2 1/2"
	292 mm	356 mm	216 mm	133 mm	178 mm	64 mm