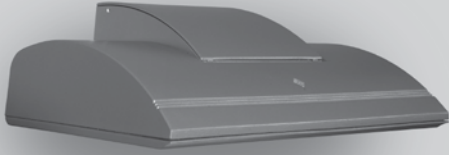


Wall Director

Medium Housing Scale - WD2M

Wall Mounted



FEATURES

- -5° to +10° tilt adjustment
- High performance optics deliver up to 15,000 lumens
- Sleek architectural form factor
- Diffused lens option
- Programmable occupancy sensor (dimming)
- NX and SiteSync wireless controls
- 130+ lumens per watt
- IES and flood distributions available
- Optional inverted/up mounting



ORDERING INFORMATION (Example)

WDM	D	48L	55	3K7	3	120	GT
FIXTURE	MOUNTING	SOURCE	WATTAGE	LIGHT ENGINE	DISTRIBUTION	VOLTAGE	FINISH
WDM Wall Director Medium	D Down U ¹ Up	48L 48 LEDs	55 55 Watts 65 65 Watts 85 85 Watts 105 105 Watts 130 130 Watts	3K7 3000K/70CRI 3K8 3000K/80CRI 4K7 4000K/70CRI 4K8 4000K/80CRI 5K7 5000K/70CRI	1 Type I 2 Type II 3 Type III 4W Type IV Wide 4F Type IV Forward SP Spot/Column WG ² Wall Graze FTD ² Front Throw Diffused WTD ² Wide Throw Diffused	UNV 120-277V 347 347V 480 480V	BL Black DB Dark Bronze LG Light Gray GT Graphite PS Platinum Silver TT Titanium WH White CC Custom Color

PC
CONTROL OPTIONS
PC Button Photocell
SCP-8F Programmable Occ. Sensor (<9' height)
SCP-20F Programmable Occ. Sensor (9' - 20' height)
SWP ³ SiteSync Wireless Pre-Commission
SWPM ³ SiteSync Wireless w/Occupancy Sensor Pre-Commission
NXSPW14F ⁴ NX Wireless, PIR Occupancy Sensor, Dimming Daylight Harvesting, 14'
NXSP14F ⁴ NX PIR Occupancy Sensor, Dimming Daylight Harvesting, 14'
NXWE ⁴ NX Wireless Enabled

EM
OPTIONS
EM ³ Integral Emergency Battery Backup
SF Single Fuse & Fuse holder
DF Double Fuse & Fuse holder
2DR Dual Drivers
2PF Dual Power Feeds

SWUSB
ACCESSORIES
SCPREMOTE SCP configuration tool
SWUSB SiteSync Software on USB
SWTAB SiteSync Windows® Tablet
SWBRG SiteSync Software Bridge Node

Microsoft, Encarta, MSN, and Windows are either registered trademarks or trademarks of Microsoft Corporation in the United States and/or other countries.

¹ Not available with EM option or with SCP & SWPM sensor options.
² WG, FTD, and WTD come with a diffused lens.
³ Universal voltage only (120-277), not available with PC option.
⁴ 120-347V only

