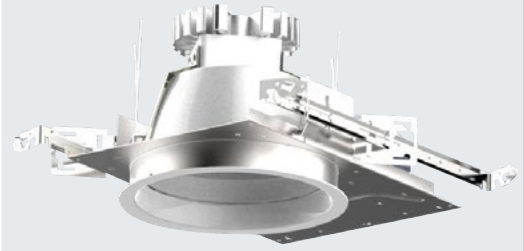


8" Lens Medium Lumen Downlight

LED system in 2700K, 3000K, 3500K, 4000K, 5000K

FEATURES

- Light Engine utilizes Philips Fortimo LED module and provides controlled color consistency fixture to fixture
- Standard Regressed lens reduces glare and maintains clean viewing angles
- Shipped with pre-installed Light Commercial bar hangers. (See below for optional Commercial grade bar hangers)
- Minimum 50,000 hour at 70% lumen maintenance system life
- Photometrics tested per IESNA-LM-79-2008 standards
- Non-IC rated. Suitable for wet locations and through wiring
- Luminaires are certified by a National Recognized Testing Lab (NRTL), either UL or CSA.
- NX Distributed Intelligence™ provides options for standalone and networked integrated sensor with wired or wireless connectivity for NX system deployments



LF8ML Lens

LED

ORDERING INFORMATION

EXAMPLE: LF8ML-8LFML30L35K8CL

LF8ML			8LFML	35K	8					CL
HOUSING LF8ML Medium Lumen 0-10V 10% dimming 120V-277V	VOLTAGE OPTION Standard 120V-277V 120 347V 277 277V 347 347V		TRIM APERTURE 8LFML30L Semi-Diffuse Clear Alzak Reflector with 3000 Lumen Module	KELVIN 27K 2700 Kelvin 30K 3000 Kelvin 35K 3500 Kelvin 40K 4000 Kelvin 50K 5000 Kelvin	CRI 8 80+ CRI 9 90+ CRI	REFLECTOR FINISH OPTIONS Standard Semi-Diffuse SP Specular SS Semi-Specular MFC American Matte™ V Kurt Versen Specular VS Kurt Versen Softglow® VSS Kurt Versen SoftSheen™	REFLECTOR OPTIONS EM ^{2,7} Emergency Battery Pack with integral test switch and indicator light	TRIM OPTIONS WT Painted White Flange only TRG Trim Ring Gasket WF ⁸ Wide Flange BNCT ⁶ Black Non-conductive Trim WNCT ⁶ White Non-conductive Trim BNCTB ⁶ Black Non-conductive Trim Baffled WNCTB ⁶ White Non-conductive Trim Baffled	LENS CL Clear Lens (Regressed Standard) DL Diffuse Lens (Regressed Standard)	
DRIVER OPTIONS Standard 0-10V 10% Dimming DM1 ¹ 0-10V dimming at 1% EDM ^{2,9} Hi-Lume 1% EcoSystem LED Driver 2DM ^{2,9} Hi-Lume 1% 2-wire LED Driver (120V only) DMX ^{2,9} DMX with RDM dimming to <0.1%	HOUSING OPTIONS LV ¹⁰ Lutron Vive Enabled, 0-10V, 120-277V LVE (EDM Only) Lutron Vive Enabled, EcoSystem NXWE ^{3,11,12} NX Wireless Enabled NXE ^{3,11,12} NX Enabled Dual SmartPorts EM ^{2,7} Emergency Battery Pack with integral test switch and indicator light EMR ² Emergency Battery Pack with remote test switch and indicator light					REFLECTOR COLOR OPTIONS Standard Clear Alzak CG Champagne Gold Alzak GD Gold Alzak BL Black Alzak WE Wheat Alzak LW Light Wheat Alzak PW Pewter Alzak WH Painted Matte White Reflector and Flange				
										ACCESSORIES
										B24 Set of two(2) 24" bar hangers for T-bar ceilings
										B6 Set of two (2) bar hangers for ceiling joist up to 24" centers
										LFSC8 8" reflector screw cover
										SCA8D Sloped Ceiling Adapter (see note on spec sheet)
										LiteGear ⁵ Inverter, single phase central lighting, 125VA-250VA
										LPS Series ⁵ LitePower micro-inverter, 20VA-55VA

NOTES

- 1 For DM1, do not specify a voltage if 120 or 277
 - 2 Not available with 347V
 - 3 Not available with EMR
 - 4 Not available with EMR or DMX
 - 5 See spec sheet for Central Inverter Compatibility note and web links
 - 6 Not available with color/finish options. Semi-Diffuse finish only.
 - 7 EM option is required on both housing and trim
 - 8 Not available with BNCT, WNCT, BNCTB, or WNCTB
 - 9 Voltage must be specified with EDM, 2DM, or DMX
 - 10 LV requires standard dimming or DM1
 - 11 Not available with LV or LVE
 - 12 Not available with EDM, 2DM or DMX
- * Please see spec sheet for NX(W)E line art

