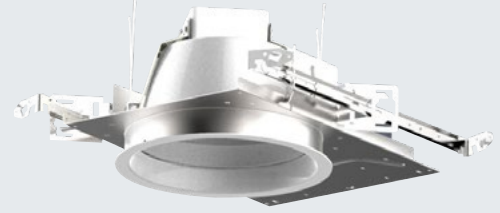


8" Lens Standard Lumen Downlight

LED system in 2700K, 3000K, 3500K, 4000K, 5000K

FEATURES

- Light Engine utilizes Philips Fortimo LED module and provides controlled color consistency fixture to fixture
- Standard Regressed lens reduces glare and maintains clean viewing angles
- Shipped with pre-installed Light Commercial bar hangers. (Not with CP option. See below for optional Commercial grade bar hangers)
- Minimum 50,000 hours at 70% lumen maintenance system life
- Photometrics tested per IESNA-LM-79-2008 standards
- Non-IC rated. Suitable for wet locations and through wiring (Damp location for EMR)
- Luminaires are certified by a National Recognized Testing Lab (NRTL), either UL or CSA.
- Optional SpectraSync™ offers three modes of tunable white solutions and integrates seamlessly into a variety of control systems
- NX Distributed Intelligence™ provides options for standalone and networked integrated sensor with wired or wireless connectivity for NX system deployments



LF8SL Lens

LED

ORDERING INFORMATION

EXAMPLE: LF8SL-8LFSL11L30K8

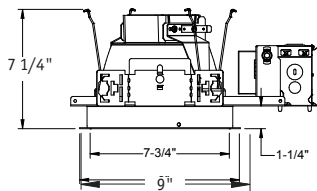
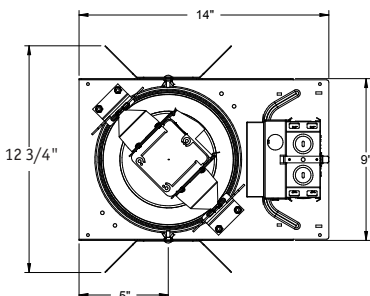
LF8SL				-	LF8SL	11L	30K	8					CL
HOUSING	VOLTAGE OPTIONS	TRIM APERTURE	OUTPUT	CRI	REFLECTOR FINISH OPTIONS	REFLECTOR COLOR OPTIONS	TRIM OPTIONS	LENS					
LF8SL Standard Lumen 0-10V 10% dimming 120V-277V	Standard 120V-277V 347 347V	8LFSL Semi-Diffuse Clear Alzak	11L 1100 Lumen Module 15L 1500 Lumen Module 20L ¹² 2000 Lumen Module	8 80+ CRI 9 90+ CRI	Standard Semi-Diffuse SP Specular SS Semi-Specular MFC American Matte™ V Kurt Versen Specular VS Kurt Versen Softglow® VSS Kurt Versen SoftSheen™	Standard Clear Alzak CG Champagne Gold Alzak GD Gold Alzak BL Black Alzak WE Wheat Alzak LW Light Wheat Alzak PW Pewter Alzak WH Painted Matte White Reflector and Flange BC Painted Black Reflector and Flange	WT Painted White Flange only TRG Trim Ring Gasket WF Wide Flange BNCT ^{6,8} Black Non-Conductive Trim WNCT ^{6,8} White Non-Conductive Trim BNCTB ^{6,8} Black Non-Conductive Trim Baffled WNCTB ^{6,8} White Non-Conductive Trim Baffled	CL Clear Lens (Regressed Standard) DL Diffuse Lens (Regressed Standard)					
DRIVER OPTIONS	HOUSING OPTIONS												
Standard 0-10V 10% Dimming DM1 0-10V dimming at 1% DMT ^{9,10} SpectraSync™ Tunable White DMTW ¹¹ SpectraSync™ Tunable Dim to Warm	EMR ² Emergency Battery Pack with remote test switch and indicator light LV ⁷ Lutron Vive Enabled, 0-10V, 120-277V NXWE ^{4,13} NX Wireless Enabled NXE ^{4,13} NX Enabled Dual SmartPorts												
KELVIN													
27K 2700 Kelvin 30K 3000 Kelvin 35K 3500 Kelvin 40K 4000 Kelvin 50K 5000 Kelvin 2230TD ³ 2200K-3000K SpectraSync™ Dim to Warm 2750T ³ 2700K-5000K SpectraSync™ Tunable White 2765T ³ 2700K-6500K SpectraSync™ Tunable White													

Use with EDM/2DM/DMX dimming option:
Match Housing to Trim Output

HOUSING	DRIVER	VOLTAGE	HOUSING OPTIONS
LF8SL11L 1100 Lumen Module	EDM ¹ Hi-Lume 1% EcoSystem LED Driver	120V 120V 277V 277V	LVE (EDM Only) Lutron Vive Enabled, EcoSystem
LF8SL15L 1500 Lumen Module	2DM ¹ Hi-Lume 1% 2-wire LED Driver (120V only)		
LF8SL20L 2000 Lumen Module	DMX ¹ DMX with RDM dimming to <0.1%		

*EDM, 2DM and DMX also available with EMR and WW

ACCESSORIES	
B24	Set of two(2) 24" bar hangers for T-bar ceilings
B6	Set of two (2) bar hangers for ceiling joist up to 24" centers
LFSC8	8" reflector screw cover
SCA8D	Sloped Ceiling Adapter(see note on spec sheet)
LiteGear ⁵	Inverter, single phase central lighting, 125VA-250VA
LPS Series ⁵	LitePower micro-inverter, 20VA-55VA



NOTES

- 1 For EDM, 2DM and DMX options, housing output must match trim output
 - 2 Not available with 347V
 - 3 Only available in 90+ CRI
 - 4 Not available with DMX, EMR, LV or LVE
 - 5 See spec sheet for Central Inverter Compatibility note and web links
 - 6 Not available with color/finish options. Semi-Diffuse finish only.
 - 7 LV requires standard dimming or DM1
 - 8 Must select CL or DL
 - 9 Must select either 2750T or 2765T Kelvin with DMT driver option
 - 10 Not available with LV or LVE
 - 11 Must select 2230TD with DMTW driver option
 - 12 Not compatible with DMT or DMTW
 - 13 Not available with EDM, 2DM or DMX
- * Please see spec sheet for EMR and NX(W)E line art