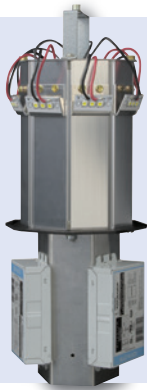


BOLR/BOLS

LED Retrofit Kit

BOLLARDS



- LED retrofit kit fits Fresno, Modesto or Tempe bollards
- Easy installation process, retrofit existing HID or CFL systems in 10 minutes or less
- Features 12 or 24 high brightness, energy-efficient LEDs
- Available in two different color correlated temperatures (3500K and 5000K)
- 12 LED system: 700mA, asymmetric distribution, 31w
- 24 LED system: 500mA, symmetric distribution 46w
- 50,000 hr L70 rated at 25° C
- Optional continuous dimming to 10% (0-10V)

ORDERING INFORMATION

SERIES	LED PLATFORM	VOLTAGE	CCT	OPTIONS	ACCESSORIES
BOLR LED Retrofit Kit - Round	24L 24 LEDs, 46w, symmetric distribution, 120-277V, 50/60 Hz	U Universal 120 - 277V, 50/60 Hz	3K 3500K 5K 5100K	F1 Fusing - 120V F2 Fusing - 208V F3 Fusing - 240V F4 Fusing - 277V CD ² Continuous dimming	BOLR-LENS ¹ Round replacement lens BOLS-LENS ¹ Square replacement lens
BOLS LED Retrofit Kit - Square	12L 12 LEDs, 31w, asymmetric distribution, 120-277V, 50/60 Hz	1 120V 2 208V 3 240V 4 277V			

1 Required for Modesto bollard
2 Dimming control by others



For installation video scan this code or visit link below:

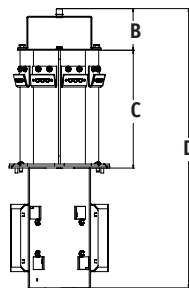
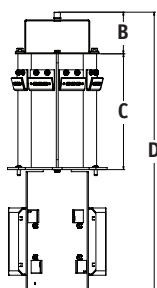


<http://www.youtube.com/user/hubbelloutdoorbrands>

DIMENSIONS

BOLR

BOLS



	A	B	C	D	Weight
BOLR	6.3" dia. 158 mm	2.6" 66 mm	7.25" 184 mm	17.5" 444 mm	5.35 lbs. 2.43 kg
BOLS	6.3" dia. 160 mm	2.6" 66 mm	7.4" 187 mm	17.5" 444 mm	5.35 lbs. 2.43 kg