

IMPORTANT SAFETY INFORMATION. READ AND FOLLOW ALL SAFETY INSTRUCTIONS. Follow label information and instructions concerning Wet or Damp Locations, installation near combustible materials, insulation, building materials, and proper lamping. Do not install in areas subject to combustible vapors or gases. Before wiring to power supply and during servicing or relamping, turn off power at fuse or circuit breaker. **All servicing or relamping must be performed by qualified service personnel. Product must be grounded to avoid potential electric shock or other potential hazard. Product must be mounted in locations and at heights and in a manner consistent with its intended use, and in compliance with the National Electrical Code and local codes.** The use of accessory equipment not recommended by the manufacturer or installed contrary to instructions may cause an unsafe condition. Do not block light emanating from product in whole or part, as this may cause an unsafe condition. Do not allow items such as drapes, curtains, screens or the like to come into contact with the product or to block light from the product, as this may cause an unsafe condition.

INSTALLATION INSTRUCTIONS ARCHITRAK® SYSTEM

INSTALLATION INSTRUCTIONS

FOR AKTT T-CONNECTOR

FOR USE WITH PRESCOLITE AKT ONE/TWO CIRCUIT SYSTEM ONLY

READ INSTALLATION INSTRUCTIONS BEFORE INSTALLING THE TRACK SYSTEM

SAVE INSTRUCTIONS FOR REFERENCE WHEN MAKING ADDITIONS TO OR CHANGES IN THE TRACK SYSTEM.

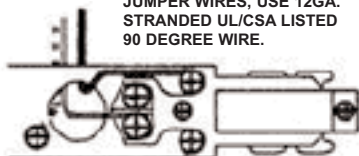
INSTALLATION

1. Refer to PRESCOLITE AKT series track for track installation instructions
2. Loosen retaining screw at ends of tee connector.
3. Align T-connector with pre-mounted track rail. Insert and press together. Tighten retaining screw.
4. Align next piece of track rail with T-connector. Insert and press together. Secure track to ceiling. Refer to track installation instructions. Repeat for remaining piece of track.
5. When used as a power feed connector refer too one and two circuit diagrams below.

POWER FEED WIRING DIAGRAMS

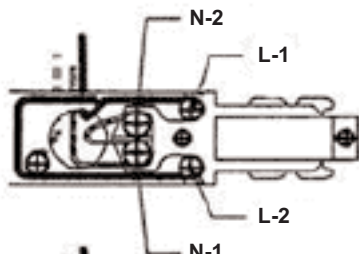
NOTE: L-1, L-2 BRASS COLORED TERMINALS
N-1, N-2 NICKEL COLORED TERMINALS

JUMPER WIRES, USE 12GA.
STRANDED UL/CSA LISTED
90 DEGREE WIRE.

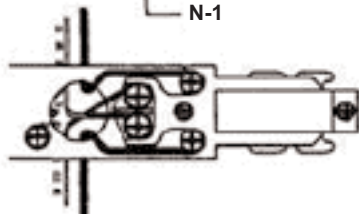


WIRE DIAGRAM 1-CIRCUIT
WIRE HOT WIRE TO L-1
NEUTRAL TO N-1, CONNECT
GROUND WIRE TO GROUND
SCREW.

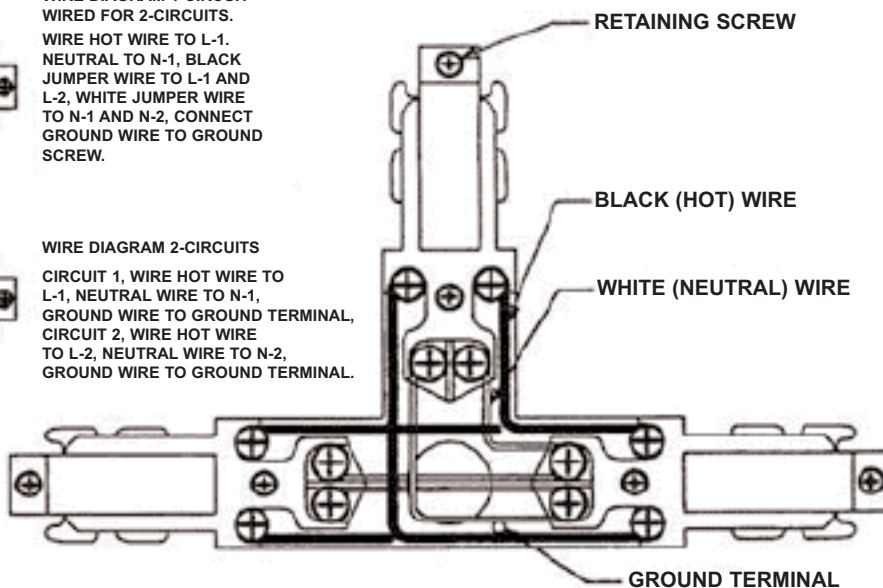
WHEN WIRED IN THIS
CONFIGURATION ONE
SET OF BUSS BARS
WILL NOT BE ENERGIZED.



WIRE DIAGRAM 1-CIRCUIT
WIRED FOR 2-CIRCUITS.
WIRE HOT WIRE TO L-1.
NEUTRAL TO N-1, BLACK
JUMPER WIRE TO L-1 AND
L-2, WHITE JUMPER WIRE
TO N-1 AND N-2, CONNECT
GROUND WIRE TO GROUND
SCREW.



WIRE DIAGRAM 2-CIRCUITS
CIRCUIT 1, WIRE HOT WIRE TO
L-1, NEUTRAL WIRE TO N-1,
GROUND WIRE TO GROUND TERMINAL,
CIRCUIT 2, WIRE HOT WIRE
TO L-2, NEUTRAL WIRE TO N-2,
GROUND WIRE TO GROUND TERMINAL.



FACTORY WIRING DIAGRAM

SEE POWER FEED DIAGRAMS FOR CONNECTION OF SUPPLY LEADS
WHEN USED AS A POWER FEED CONNECTOR



101 Corporate Drive • Spartanburg, SC 29303

With representatives offices in principal cities throughout North America.
Copyright 2005, 08/05 revision, All Rights Reserved - Printed in U.S.A.