

**INSTALLATION
INSTRUCTIONS**

FIXTURE TYPE _____

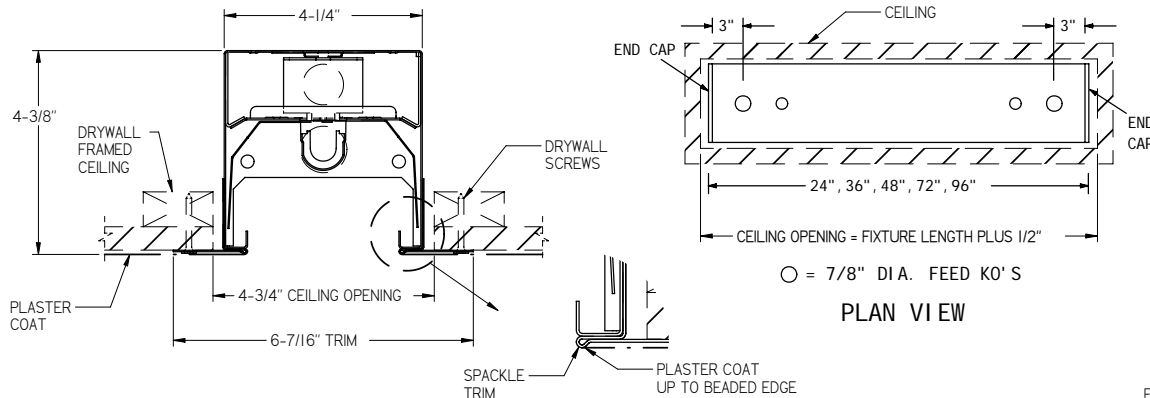
**RP-D-4400
FIXTURE**

P/C 510465-1000

DATE: 10-28-08

PG. 1 OF 2

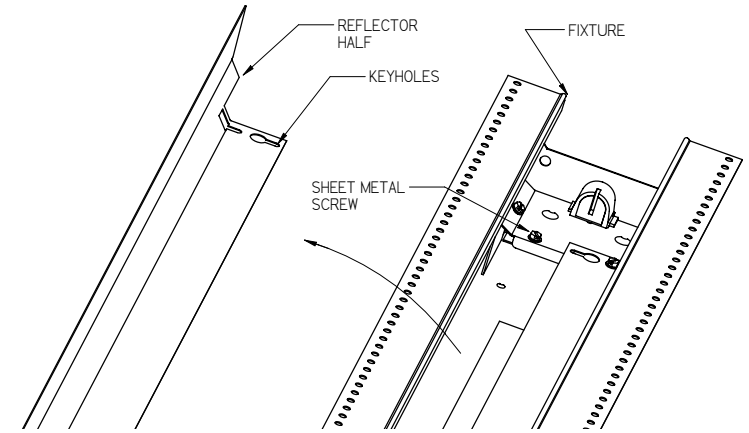
DO NOT MODIFY OR ALTER THIS PRODUCT IN ANY WAY, OR INSTALL IN ANY FASHION WHICH IS CONTRARY TO THE INSTRUCTIONS CONTAINED HEREIN.
IF YOU HAVE ANY QUESTIONS REGARDING THIS PRODUCT OR THE INSTALLATION OF IT, PLEASE CALL LITECONTROL ENGINEERING AT 781-294-0100.



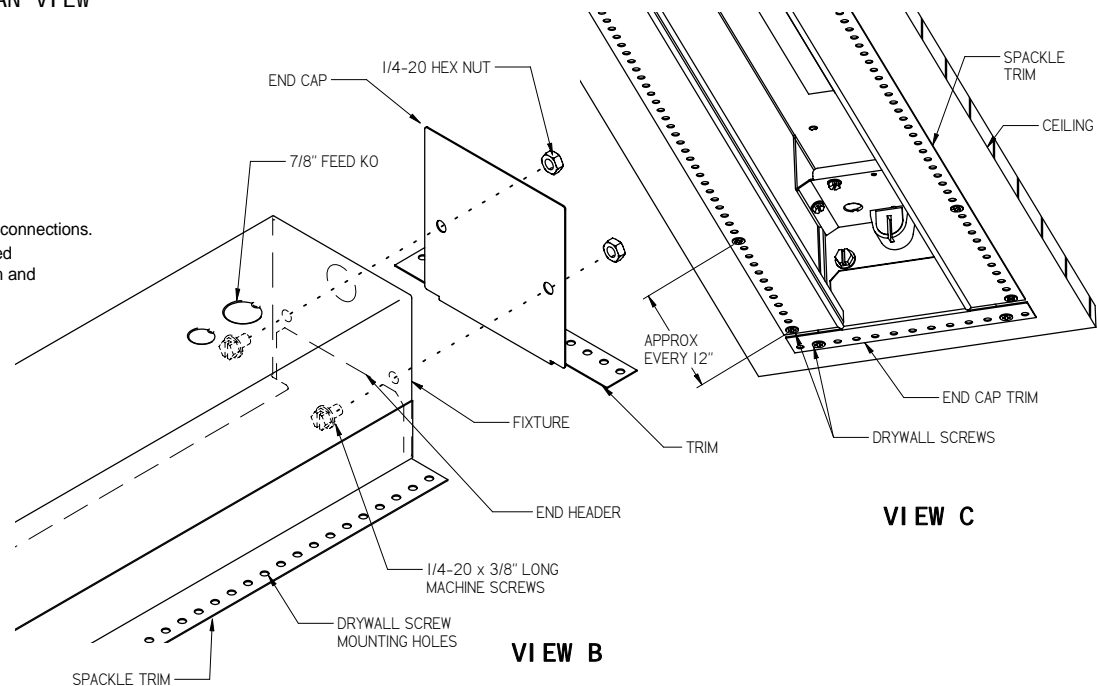
CROSS SECTION

PLAN VIEW

○ = 7/8" DIA. FEED KO'S



VIEW A



VIEW B

VIEW C

GENERAL NOTES: (READ SHEETS COMPLETELY BEFORE STARTING)

1. Leave protective wrapping material on fixture until fixtures are mounted: This will protect finish from damage.
2. Fixtures are supplied with factory installed branch circuit wiring. Refer to supplemental instruction sheet for making connections.
3. Fixtures are mounted in a drywall framed plaster ceiling supported with drywall screws (supplied by installer) inserted thru holes in fixture Spackle Trims and End Caps. Drywall Screws are placed in holes at both ends of Spackle Trim and approximately every 12" along length of fixture. A minimum of two screws is required thru each End Cap trim. Approximate weight of fixture is 5 lbs per foot of fixture length.

INSTRUCTIONS:

1. Remove Reflector Halves from fixture by loosening (2 or 4) sheet metal screws and shifting them out thru keyholes. See View "A".
2. **MOUNTING INDIVIDUAL FIXTURES:**
 - A) Remove a 7/8" KO in top of housing at electrical feed location.
 - B) Mount End Caps (shipped separately) to both ends of fixture with (2) 1/4-20 screws and nuts as shown in View "B". Bottom edge of End Caps must be flush with bottom of housing trims.
 - C) Lift fixture up near ceiling opening and bring electrical feed into fixture wireway. Raise fixture up thru ceiling opening and secure spackle trims to drywall with drywall screws. See View "C".
 - D) Make electrical connections in fixture wireway.

GO TO STEP 5 ON PAGE 2

INSTALLATION INSTRUCTIONS

FIXTURE TYPE _____

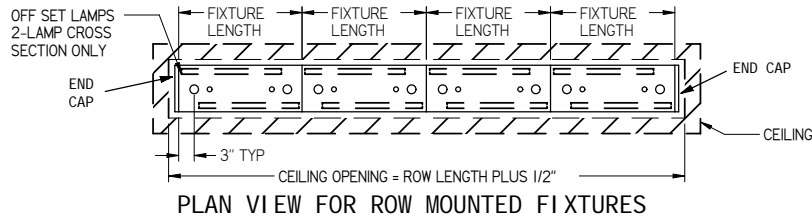
**RP-D-4400
FIXTURE**

P/C **510465-1000**

DATE: 10-28-08

PG. 2 OF 2

DO NOT MODIFY OR ALTER THIS PRODUCT IN ANY WAY, OR INSTALL IN ANY FASHION WHICH IS CONTRARY TO THE INSTRUCTIONS CONTAINED HEREIN.
IF YOU HAVE ANY QUESTIONS REGARDING THIS PRODUCT OR THE INSTALLATION OF IT, PLEASE CALL LITECONTROL ENGINEERING AT 781-294-0100.



3. MOUNTING ROWS OF FIXTURES:

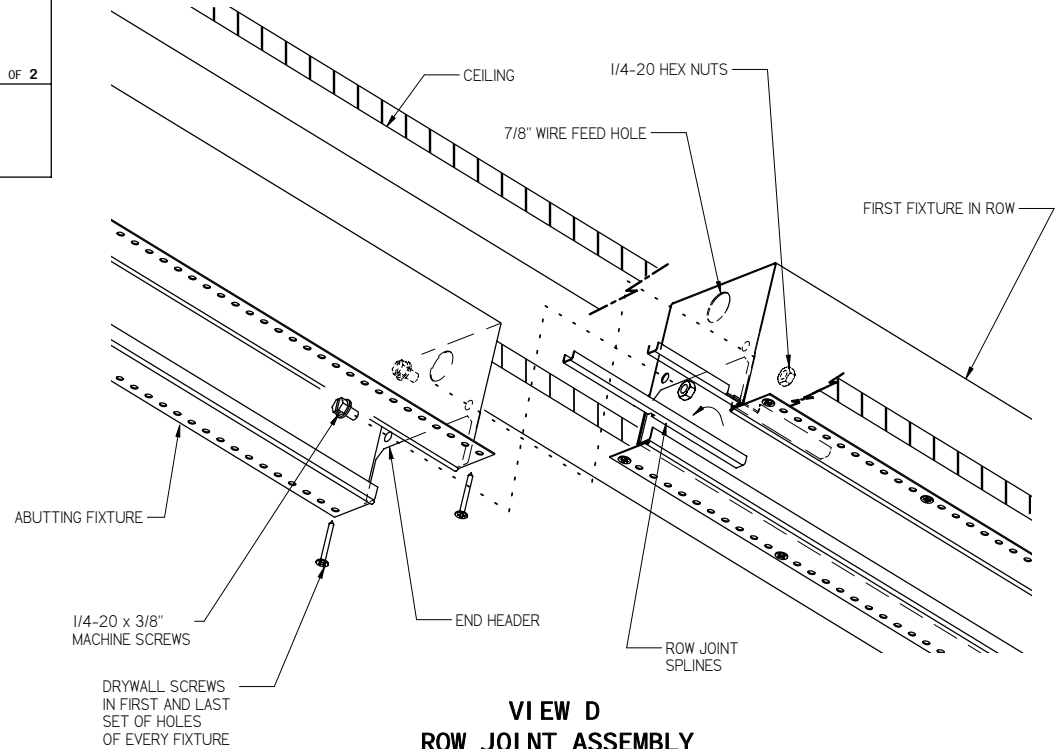
NOTE: Fixtures are installed in ceiling opening connected to each other at row joint per steps below.
Two lamp cross section fixtures have offset lamp locations, position fixtures in rows as shown above.

- A) Starting with the first fixture in row, attach an End Cap to one end of fixture per step 2B.
- B) Remove a 7/8" KO in top of housing for wire feed.
- C) Lift and install fixture into ceiling opening per step 2C.
- D) Lift and install the next fixture in row into ceiling opening making sure that spackle trim butts up against trim of first fixture before *loosely securing with drywall screws: See View "D".
Bolt this fixture to the first fixture at row joint with (2) 1/4-20 x 3/8" long machine screws and nuts.
- *NOTE: Use the row mounting screws and splines to align fixtures in a straight line before tightening drywall screws.
Branch circuit wires can be routed thru 7/8" holes in end headers at each row joint.
- E) Press a Spline (found in polybag) into each bottom rail at row joint for alignment.
- F) Level each fixture and align seams at row joint before tightening all screws.
- G) Repeat steps 3D, 3E, & 3F for each additional fixture in row.
Attach another End Cap onto the last fixture in the row before installing into ceiling.

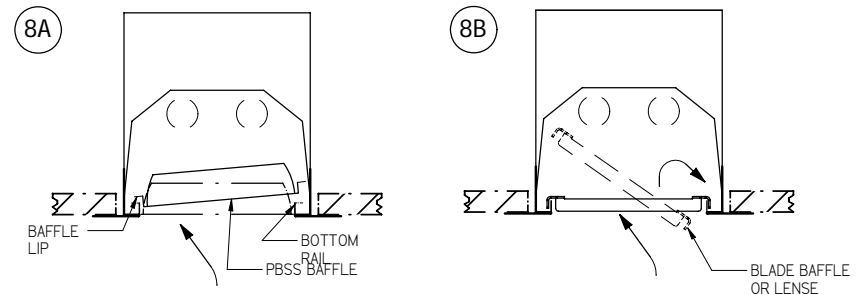
- 4. Make all wiring connections in fixture wireways.
- 5. Replace all Reflector Halves and remove all wrapping material.
- 6. Clean exposed fixture exterior surfaces with a general window cleaner.
- 7. Apply finish plaster coat over Spackle Trims, covering drywall screws. Plaster coat up to beaded edge of trim as shown on page 1. Avoid getting plaster on inside surfaces of fixture.
- 8. **LAMP AND DIFFUSER INSTALLATION:**

Install lamps (by others) by inserting lamp pins into sockets and rotating lamp 90 degrees to lock in place.
Use caution when installing diffusers to prevent lamp damage.

- A) PARABOLIC BAFFLES (PBSS or PBCWM) are shifted into fixture opening and lowered into place by pulling down on baffle until lip sits on bottom rails
- B) LENSES and BLADE BAFFLES are shifted into fixture opening and rest on top of bottom rails.
Lenses are installed with the smooth side up.



**VIEW D
ROW JOINT ASSEMBLY**



DIFFUSER INSTALLATION