

INSTALLATION INSTRUCTIONS

FIXTURE TYPE _____

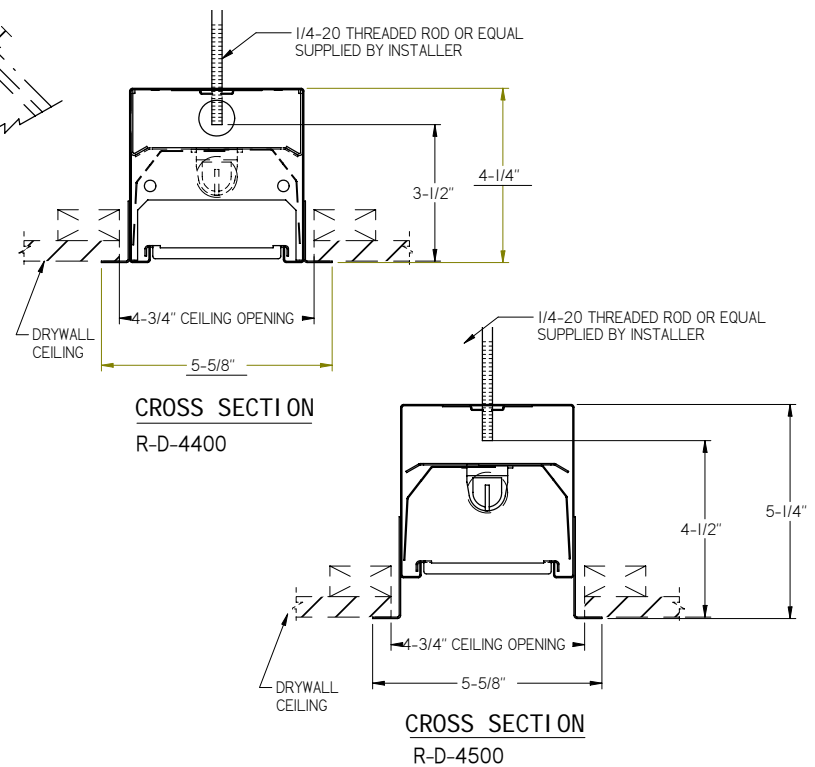
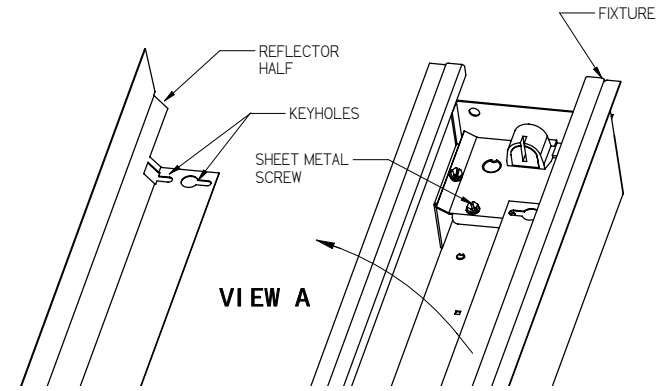
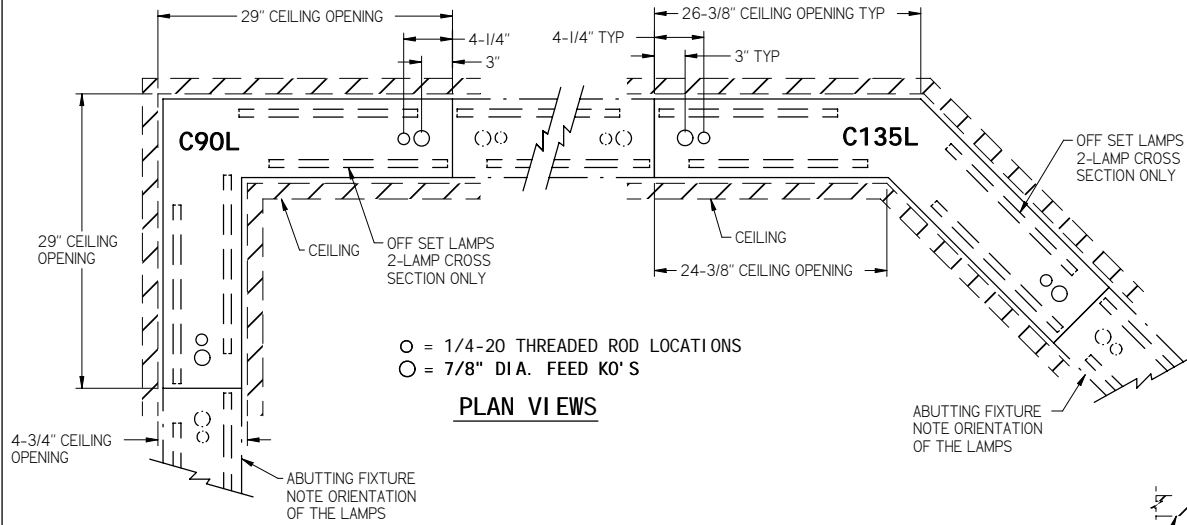
R-D-44/4500 LIGHTED CORNERS

P/C **510471-1000**

DATE: 10-28-08

PG. 1 OF 2

DO NOT MODIFY OR ALTER THIS PRODUCT IN ANY WAY, OR INSTALL IN ANY FASHION WHICH IS CONTRARY TO THE INSTRUCTIONS CONTAINED HEREIN.
IF YOU HAVE ANY QUESTIONS REGARDING THIS PRODUCT OR THE INSTALLATION OF IT, PLEASE CALL LITECONTROL ENGINEERING AT 781-294-0100.



GENERAL NOTES: (READ SHEETS COMPLETELY BEFORE STARTING)

1. Leave protective wrapping material on corner until corner is mounted: This will protect finish from damage.
2. Corners are supplied with factory installed branch circuit wiring. Refer to supplemental instruction sheet for making connections.
3. Corners should be mounted in ceiling before abutting fixtures in row.
4. Corners are mounted in a drywall ceiling supported with (2) 1/4-20 threaded rods or equal attached to overhead structure supplied by installer.
Approximate weight of corner is 20 lbs.

INSTRUCTIONS:

1. Remove Reflector Halves from CORNER by loosening (4 or 8) sheet metal screws and shifting them out thru keyholes. See View "A".
2. **MOUNTING LIGHTED CORNERS:**
 - A) Remove a 7/8" KO in top of CORNER at electrical feed location. Remove both 5/8" ko's at ends of housing for threaded rod attachment
 - B) Locate and install (2) 1/4-20 threaded rods in ceiling at locations shown in Plan View.
Note threaded rods must end 3" or 4-1/2" above finished ceiling as shown in cross sections.
 - C) Lift corner up near ceiling opening and bring electrical feed into fixture wireway.
Raise corner up flush to ceiling opening and secure to threaded rods with fender washers and flange nuts (found in polybag): See View "B".
 - D) Make electrical connections in corner wireway.

GO TO STEP 3 ON PAGE 2

LITECONTROL

100 HAWKS AVENUE - HANSON MA 02341, (781-294-0100)

**INSTALLATION
INSTRUCTIONS**

FIXTURE TYPE _____

**R-D-44/4500 LIGHTED
CORNERS**

P/C **510471-1000**

DATE: 10-28-08

PG. 2 OF 2

DO NOT MODIFY OR ALTER THIS PRODUCT IN ANY WAY, OR INSTALL IN ANY FASHION WHICH IS CONTRARY TO THE INSTRUCTIONS CONTAINED HEREIN.
IF YOU HAVE ANY QUESTIONS REGARDING THIS PRODUCT OR THE INSTALLATION OF IT, PLEASE CALL LITECONTROL ENGINEERING AT 781-294-0100.

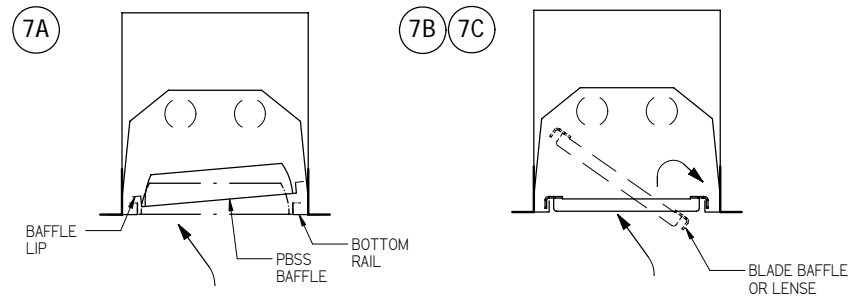
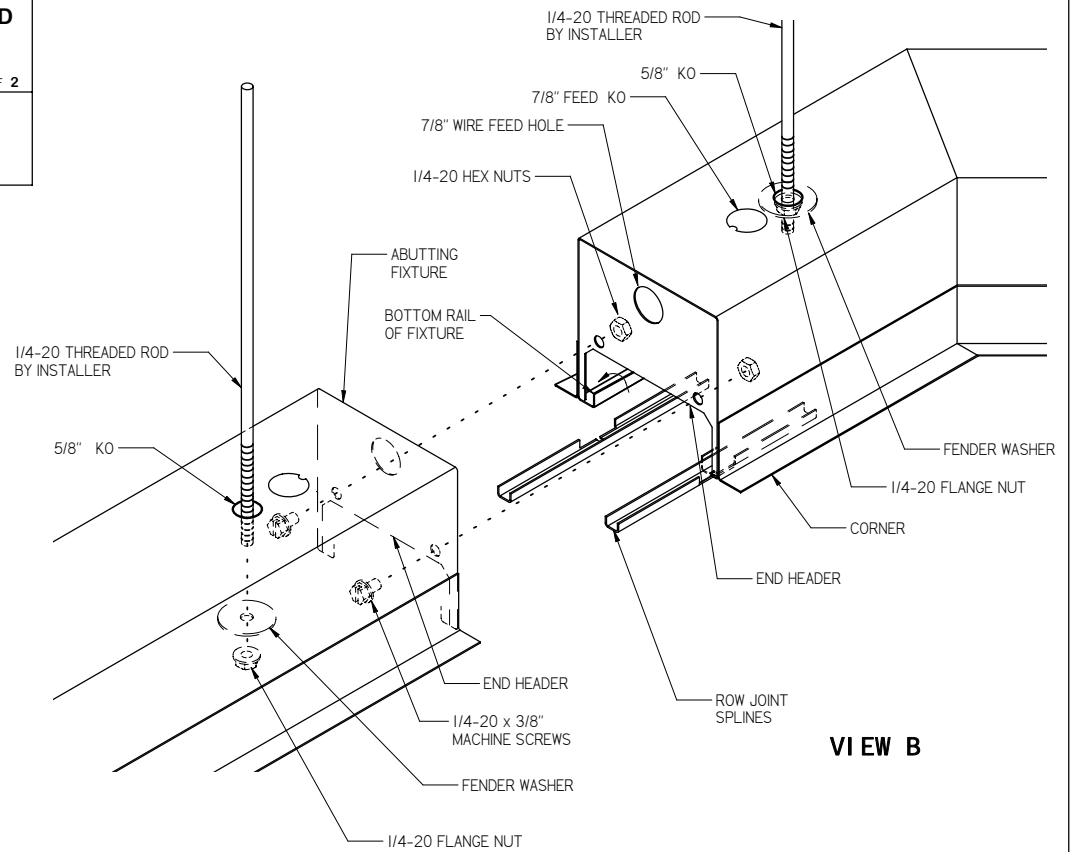
3. MOUNTING CORNER TO ADJACENT FIXTURES:

- A) Locate threaded rods in ceiling for abutting fixtures per fixture instruction sheet.
 - B) Lift fixture up into ceiling opening and attach to 1/4-20 threaded rods.
Branch circuit wires can be brought thru 7/8" holes in end headers.
Loosely bolt this fixture to corner with (2) 1/4-20 x 3/8" long machine screws and nuts thru end headers; See View "B"
 - C) Press a Spline (found in polybag) into each bottom rail at row joint for alignment.
 - D) Level each fixture and align seams at row joint before tightening all screws.
Repeat step 3 for installing another fixture against opposite leg of corner.
4. Make wiring connections in corner or abutting fixture wireways.
5. Replace all Reflector Halves and remove all wrapping material.
6. Clean fixture exteriors with a general window cleaner and install lamps (by others).
Lamps are installed by inserting lamp pins into sockets and rotating lamp 90 degrees to lock in place.

7. DIFFUSER INSTALLATION:

Use caution when installing diffusers to prevent lamp damage.

- A) **PARABOLIC BAFFLES (PBSS or PBCWM)** are supplied in 3 sections for each corner.
Shift the mitered baffle section into into corner opening first and lower into place by pulling down until baffle lip sits on bottom rails.
Shift and install the adjacent straight sections of baffle next to mitered section in the same manner.
- B) **BLADE BAFFLES (BW, BB, BA or BZ)** are supplied in 3 sections for each corner.
Shift the mitered baffle section into into corner opening first and rest on top of bottom rails.
Shift and install the adjacent straight sections of baffle next to mitered section in the same manner.
- C) **ACRYLIC LENSES** are supplied in 2 mitered sections, Shift each section into fixture opening and rest on top of bottom rails.



DIFFUSER INSTALLATION