

**INSTALLATION INSTRUCTIONS**

FIXTURE TYPE \_\_\_\_\_

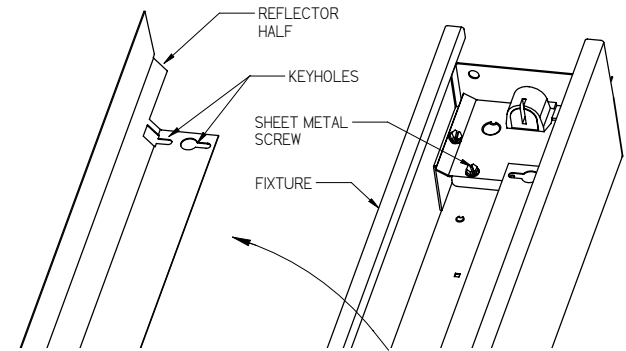
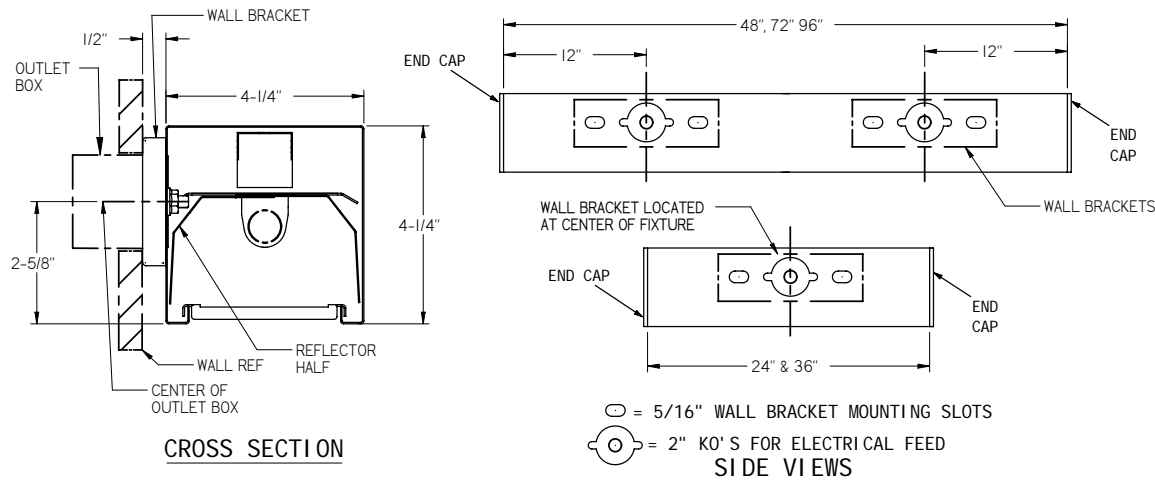
**W-D-4400 FIXTURE**

P/C **510474-1000**

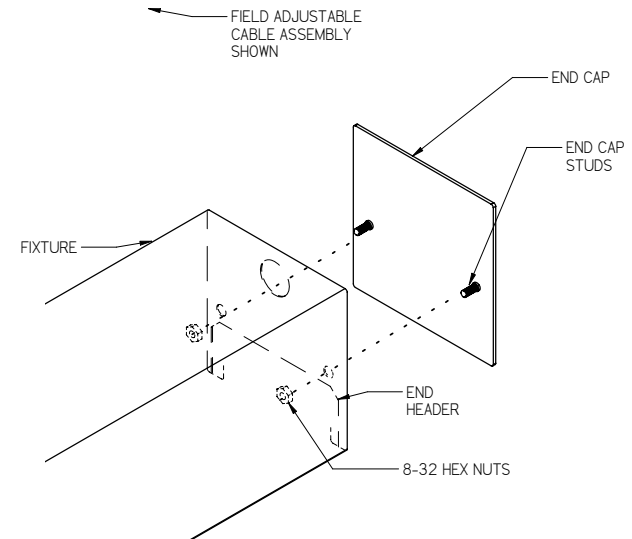
DATE: 10-28-08

PG. 1 OF 2

DO NOT MODIFY OR ALTER THIS PRODUCT IN ANY WAY, OR INSTALL IN ANY FASHION WHICH IS CONTRARY TO THE INSTRUCTIONS CONTAINED HEREIN.  
IF YOU HAVE ANY QUESTIONS REGARDING THIS PRODUCT OR THE INSTALLATION OF IT, PLEASE CALL LITECONTROL ENGINEERING AT 781-294-0100.



**VIEW A**



**VIEW B**

**GENERAL NOTES: (READ SHEETS COMPLETELY BEFORE STARTING)**

1. Leave protective wrapping material on fixture until fixtures are mounted: This will protect finish from damage.
2. Fixtures are supplied with factory installed branch circuit wiring. Refer to supplemental instruction sheet for making connections.
3. Wall mounted fixtures are attached with wall brackets (shipped separately) over a finished wall surface.  
One wall bracket is required for each 24" or 36" long fixture and Two brackets are required for each 48", 72" or 96" long fixture.  
Approximate weight of fixture is 5 lbs per foot of length.

**INSTRUCTIONS:**

1. Remove Reflector Halves from fixture by loosening (2 or 4) sheet metal screws and shifting them out thru keyholes. See View "A".
2. **MOUNTING INDIVIDUAL FIXTURES:**
  - A) Locate and install wall brackets per Side Views above and installation instruction sheet 510475 shipped with the wall brackets.
  - B) Remove a 2 diameter" KO or use the 7/8" hole in center of KO at the outlet box location for bringing in Electrical feed.
  - C) Mount End Caps (shipped separately) to both ends of fixture with (2) 8-32 nuts as shown in View "B".  
Before tightening nuts, position End Caps so they are flush with sides of fixture.
  - D) Lift fixture up onto wall bracket studs and secure with fender washers and 1/4-20 flange nuts provided.  
See View "C" on page 2.
  - E) Bring electrical feed into fixture wireway and make connections.

**GO TO STEP 5 ON PAGE 2**

**LITECONTROL**

100 HAWKS AVENUE - HANSON MA 02341, (781-294-0100)

**INSTALLATION INSTRUCTIONS**

FIXTURE TYPE \_\_\_\_\_

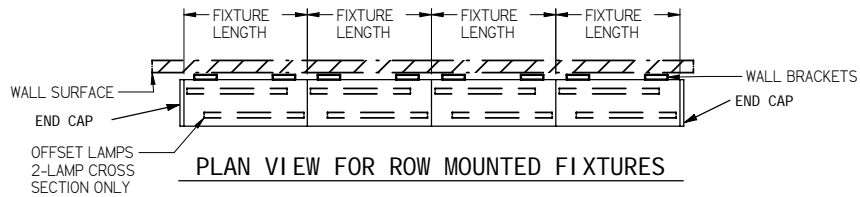
**W-D-4400 FIXTURE**

P/C 510474-1000

DATE: 10-28-08

PG. 2 OF 2

DO NOT MODIFY OR ALTER THIS PRODUCT IN ANY WAY, OR INSTALL IN ANY FASHION WHICH IS CONTRARY TO THE INSTRUCTIONS CONTAINED HEREIN.  
IF YOU HAVE ANY QUESTIONS REGARDING THIS PRODUCT OR THE INSTALLATION OF IT, PLEASE CALL LITECONTROL ENGINEERING AT 781-294-0100.



**PLAN VIEW FOR ROW MOUNTED FIXTURES**

**3. MOUNTING ROWS OF FIXTURES:**

NOTE: Fixtures are installed connected to each other at row joint per steps below.

Two lamp cross section fixtures have offset lamp locations, position fixtures in rows as shown above.

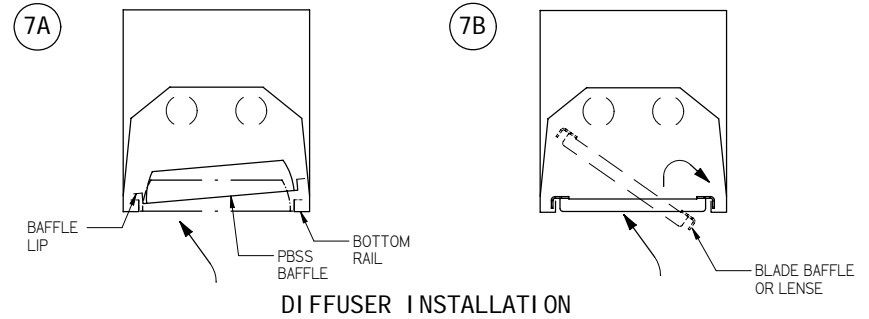
- A) Refer to Plan View above and Side Views on page 1 for locations of wall brackets and mount them to wall.
- B) Starting with the first fixture in row, remove a 2" KO for electrical feed and attach an End Cap to one end of fixture per steps 2B and 2C.
- C) Lift and install first fixture onto wall brackets and attach per step 2D and level fixture.
- D) Lift the next fixture in row onto its wall brackets; loosely bolt to brackets with fender washers and flange nuts: See View "D". Bolt this fixture to the first fixture at row joint with (2) 1/4-20 x 3/8" long machine screws and nuts. Branch circuit wires can be brought thru 7/8" holes in end headers at each row joint.
- E) Press a Spline (found in polybag) into each bottom rail at row joint for alignment.
- F) Repeat steps 3D & 3E for each additional fixture in row. Level fixtures, align seams at row joints and tighten all wall bracket and row joint nuts. Install another End Cap onto the last fixture in the row before mounting to its wall brackets.

4. Make all wiring connections in fixture wireways.
5. Replace all Reflector Halves and remove all wrapping material.
6. Clean fixture exteriors with a general window cleaner. Install lamps (by others) by inserting lamp pins into sockets and rotating lamp 90 degrees to lock in place.

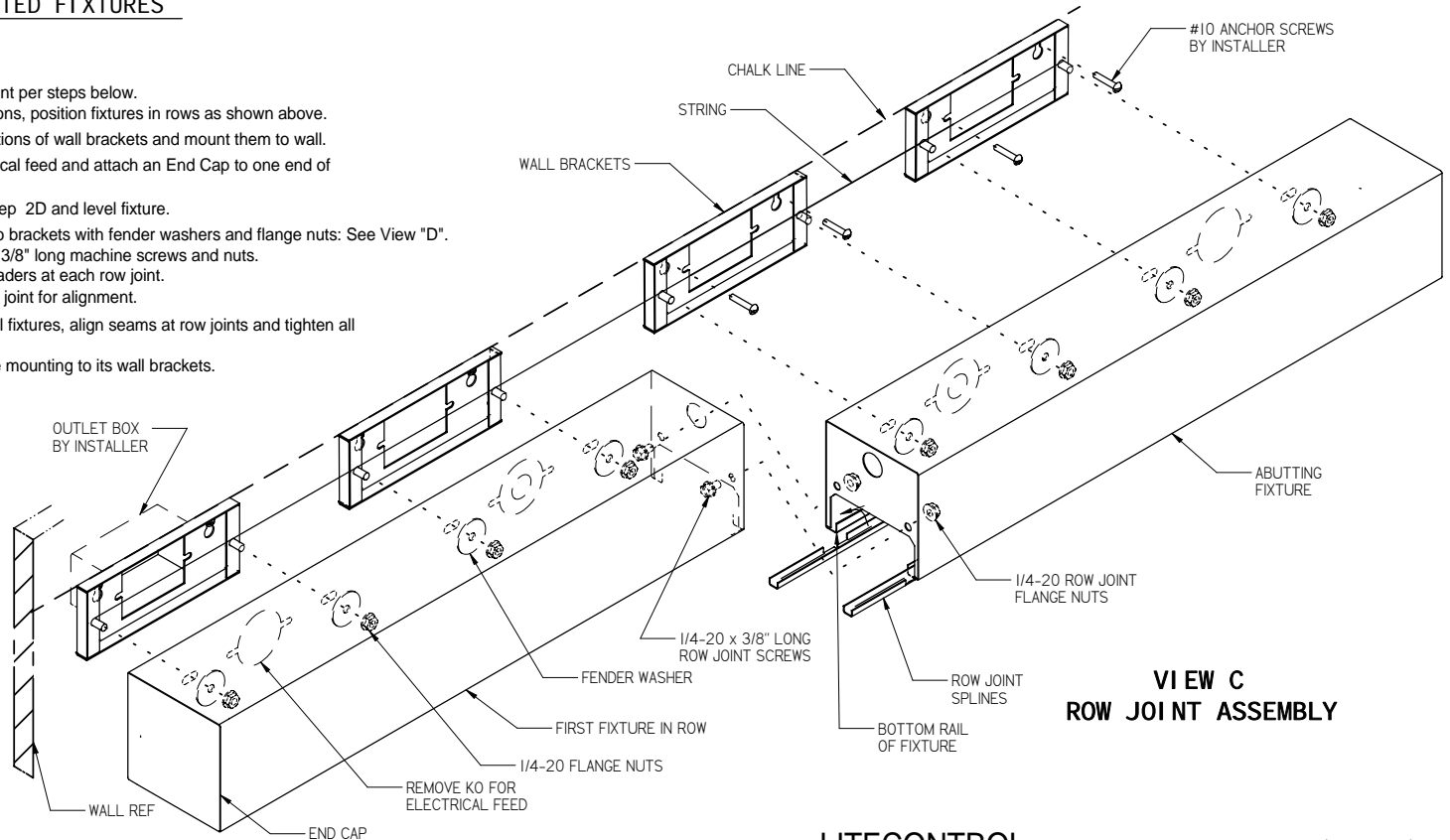
**7. DIFFUSER INSTALLATION:**

Use caution when installing diffusers to prevent lamp damage.

- A) PARABOLIC BAFFLES (PBSS or PBCWM) are shifted into fixture opening and lowered into place by pulling down on baffle until lip sits on bottom rails.
- B) LENSES and BLADE BAFFLES are shifted into fixture opening and rest on top of bottom rails. Lenses are installed with the smooth side up.



**DIFFUSER INSTALLATION**



**VIEW C  
ROW JOINT ASSEMBLY**

**LITECONTROL**

100 HAWKS AVENUE - HANSON MA 02341, (781)-294-0100