

INSTALLATION
INSTRUCTIONS

FIXTURE TYPE _____

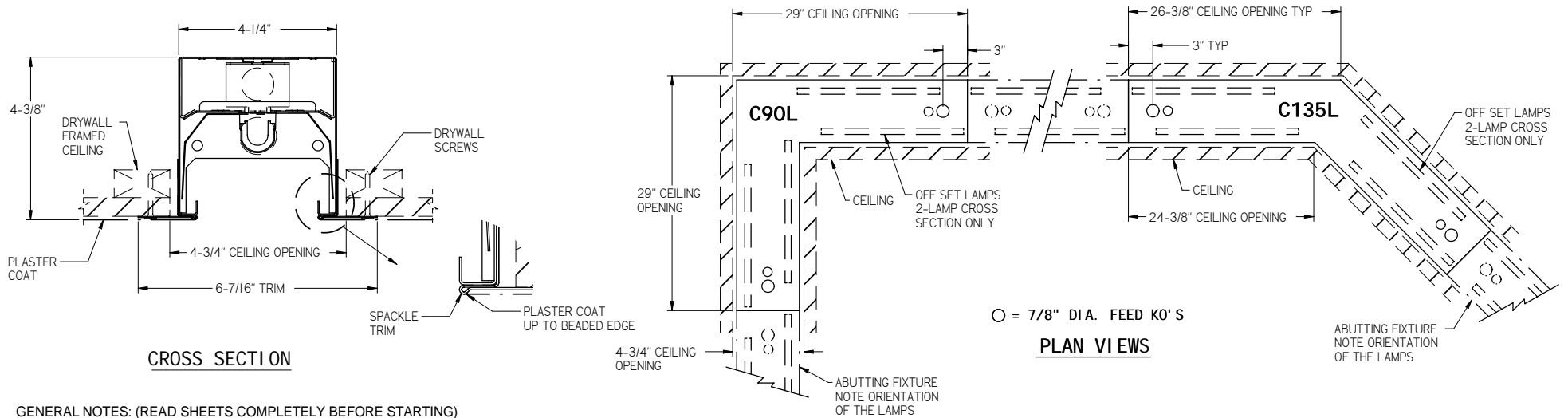
RP-D-4400
LIGHTED
CORNERS

P/C 510477-1000

DATE: 10-28-08

PG. 1 OF 2

DO NOT MODIFY OR ALTER THIS PRODUCT IN ANY WAY, OR INSTALL IN ANY FASHION WHICH IS CONTRARY TO THE INSTRUCTIONS CONTAINED HEREIN.
IF YOU HAVE ANY QUESTIONS REGARDING THIS PRODUCT OR THE INSTALLATION OF IT, PLEASE CALL LITECONTROL ENGINEERING AT 781-294-0100.



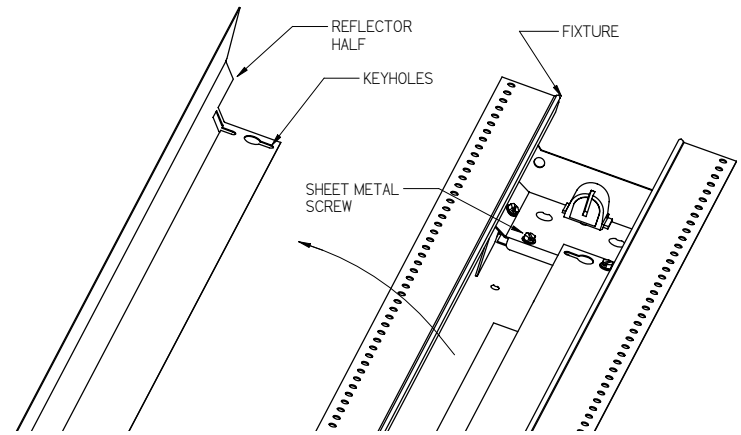
GENERAL NOTES: (READ SHEETS COMPLETELY BEFORE STARTING)

1. Leave protective wrapping material on corners until they are mounted: This will protect finish from damage.
2. Corners are supplied with factory installed branch circuit wiring. Refer to supplemental instruction sheet for making connections.
3. Corners are mounted in a drywall framed plaster ceiling supported with drywall screws (supplied by installer) inserted thru holes in Spackle Trims. Drywall Screws are placed in holes at both ends of mitred Trims and half way along each trim side. Approximate weight of corner is 20 lbs
4. Corners should be installed in ceiling first before abutting fixtures in row.

INSTRUCTIONS:

1. Remove Reflector Halves from fixture by loosening (2 or 4) sheet metal screws and shifting them out thru keyholes. See View "A".
2. MOUNTING LIGHTED CORNERS:
 - A) Remove a 7/8" KO in top of corner at electrical feed location if necessary.
 - B) Lift Corner up near ceiling opening and bring electrical feed into wireway if feed is being brought into corner. Raise Corner up thru ceiling opening and secure spackle trims to drywall with drywall screws. See View "B" on page 2.
 - C) Make electrical connections in corner wireway if feed is brought into corner.

GO TO STEP 3 ON PAGE 2



VIEW A

INSTALLATION
INSTRUCTIONS

FIXTURE TYPE _____

RP-D-4400
LIGHTED
CORNERS

PG. 2 OF 2

P/C 510477-1000

DATE: 10-28-08

DO NOT MODIFY OR ALTER THIS PRODUCT IN ANY WAY, OR INSTALL IN ANY FASHION WHICH IS CONTRARY TO THE INSTRUCTIONS CONTAINED HEREIN.
IF YOU HAVE ANY QUESTIONS REGARDING THIS PRODUCT OR THE INSTALLATION OF IT, PLEASE CALL LITECONTROL ENGINEERING AT 781-294-0100.

3. MOUNTING ABUTTING FIXTURES TO CORNERS:

NOTE: Abutting fixtures are installed thru ceiling opening and are connected to each leg of corner per steps below.
Two lamp cross section fixtures have offset lamp locations, position abutting fixtures as shown in Plan View on page 1.

- A) Lift and install the abutting fixture into ceiling opening making sure that spackle trim butts up against trim of the corner before "loosely securing with drywall screws: See View "B".
Bolt this fixture to the corner at row joint with (2) 1/4-20 x 3/8" long machine screws and nuts.

*NOTE: Use the row mounting screws and splines to align fixture in a straight line before tightening drywall screws.
Branch circuit wires can be routed thru 7/8" holes in end headers at each row joint.

- B) Press a Spline (found in polybag) into each bottom rail at row joint for alignment.
C) Level fixture and align seams at row joint before tightening all screws.
D) Repeat step 3 for installing another fixture against opposite leg of corner.

4. Make all wiring connections in wireways.

5. Replace all Reflector Halves and remove all wrapping material.

6. Clean exposed fixture exterior surfaces with a general window cleaner.

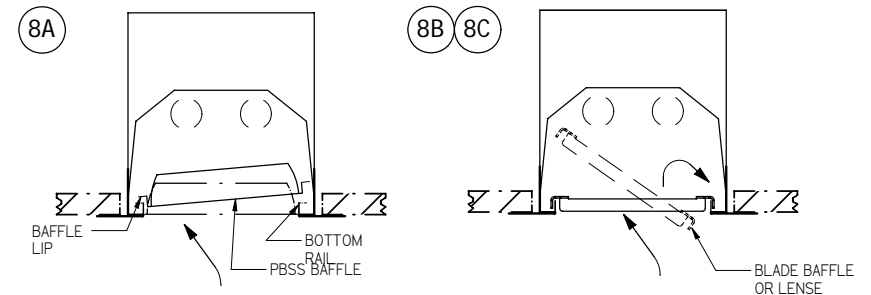
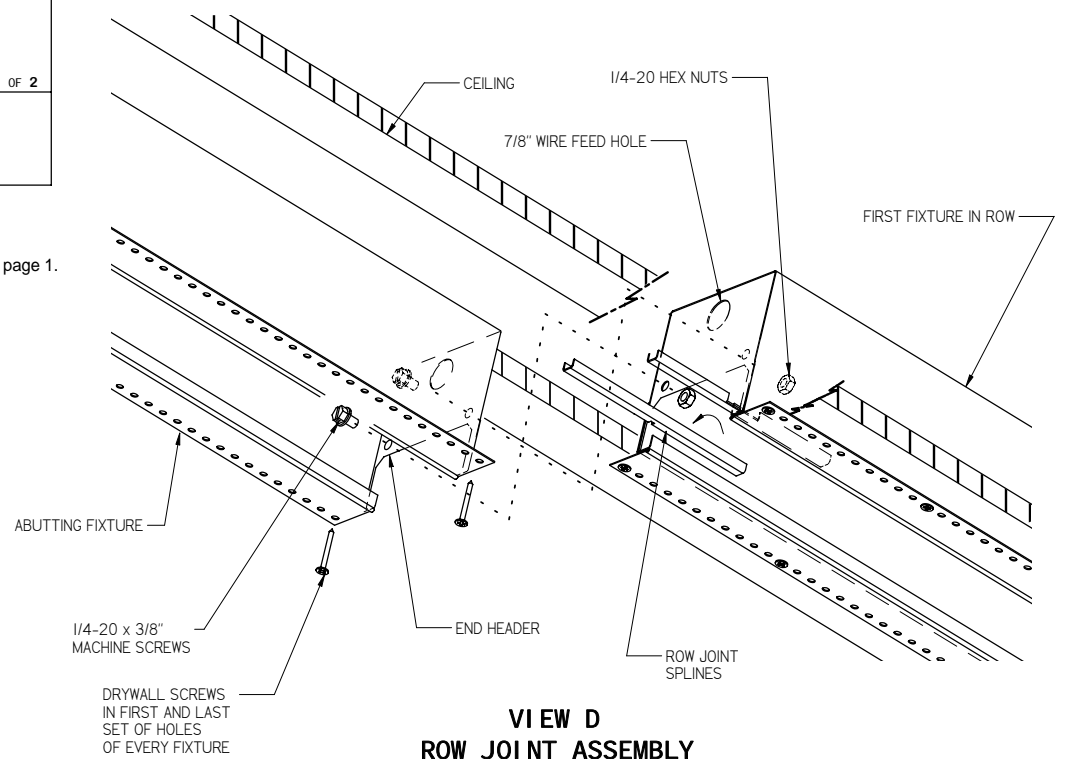
7. Apply finish plaster coat over Spackle Trims, covering drywall screws. Plaster coat up to beaded edge of trim as shown on page 1. Avoid getting plaster on inside surfaces of corner

8. LAMP AND DIFFUSER INSTALLATION:

Install lamps (by others) by inserting lamp pins into sockets and rotating lamp 90 degrees to lock in place.

Use caution when installing diffusers to prevent lamp damage.

- A) PARABOLIC BAFFLES (PBSS or PBCWM) are supplied in 3 sections for each corner.
Shift the mitered baffle section into corner opening first and lower into place by pulling down until baffle lip sits on bottom rails.
Shift and install the adjacent straight sections of baffle next to mitered section in the same manner.
- B) BLADE BAFFLES (BW, BB, BA or BZ) are supplied in 3 sections for each corner.
Shift the mitered baffle section into corner opening first and rest on top of bottom rails.
Shift and install the adjacent straight sections of baffle next to mitered section in the same manner.
- C) ACRYLIC LENSES are supplied in 2 mitered sections, Shift each section into fixture opening and rest on top of bottom rails.



DI FFUSER I NSTALLATI ON