

INSTALLATION INSTRUCTIONS

W-D-4400 CORNERS

FIXTURE TYPE _____

P/C **510479-1000**

DATE: 10-27-08

PG. 1 OF 1

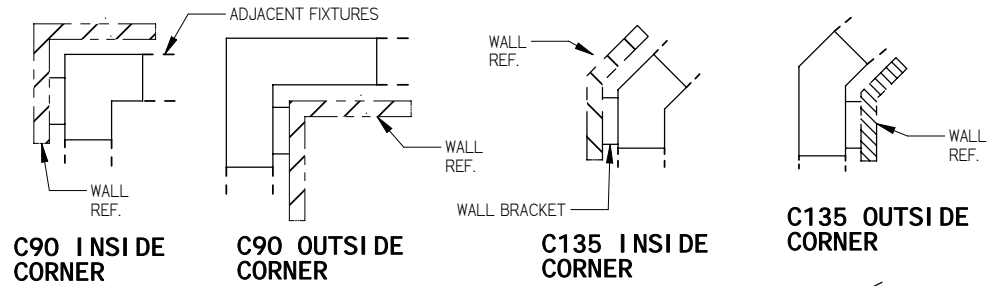
DO NOT MODIFY OR ALTER THIS PRODUCT IN ANY WAY, OR INSTALL IN ANY FASHION WHICH IS CONTRARY TO THE INSTRUCTIONS CONTAINED HEREIN.
IF YOU HAVE ANY QUESTIONS REGARDING THIS PRODUCT OR THE INSTALLATION OF IT, PLEASE CALL LITECONTROL ENGINEERING AT 781-294-0100.

GENERAL NOTES:

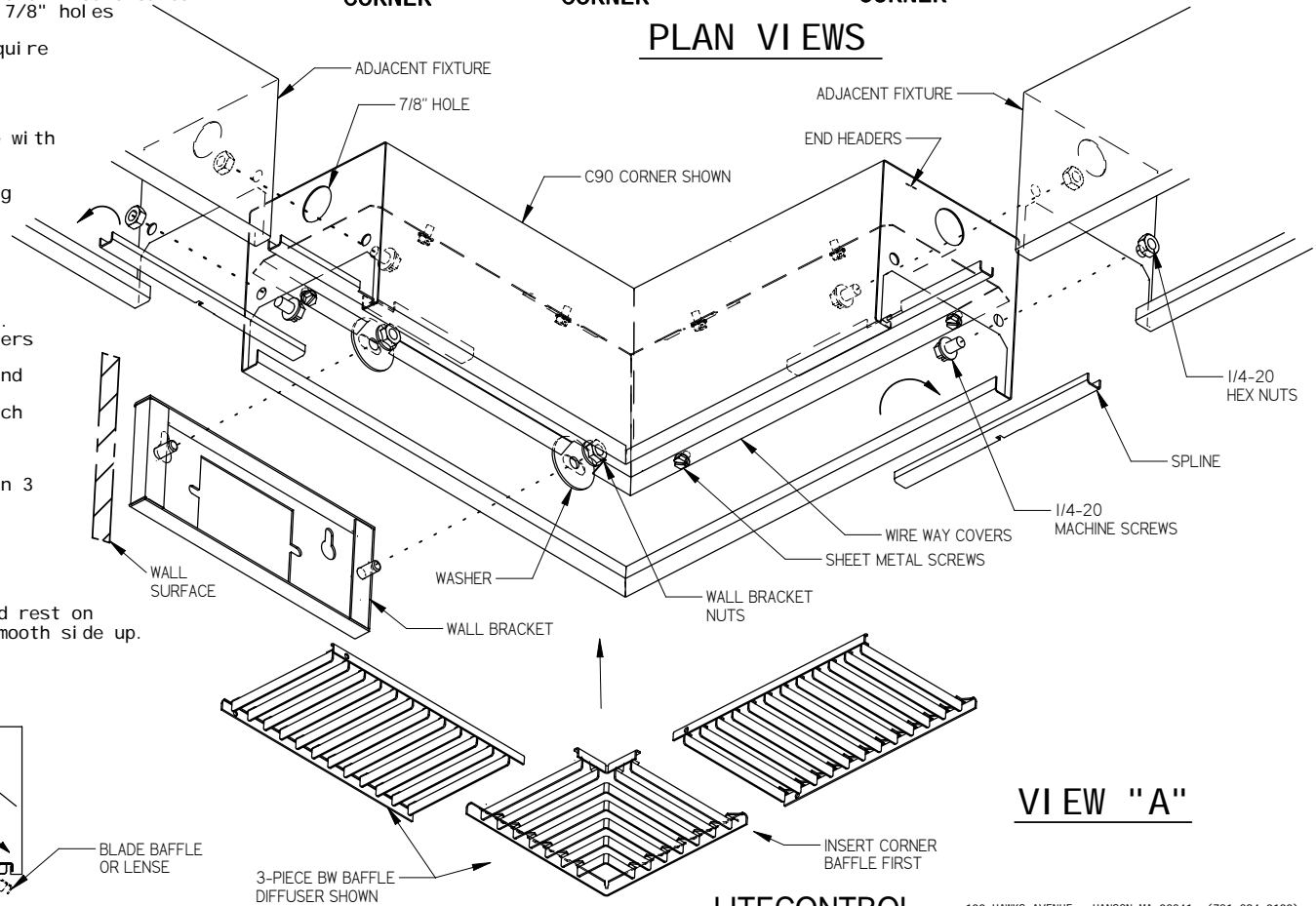
1. Corner Boxes are factory made to fit opening between two adjacent fixtures based on Templates provided to Litecontrol.
2. Corners are shipped with diffusers and mounting hardware in same carton.
3. Wiring between adjacent fixtures may be brought thru 7/8" holes in corner End Headers.
4. Corners that have leg lengths longer than 12" may require a Wall Bracket for mounting.

INSTRUCTIONS:

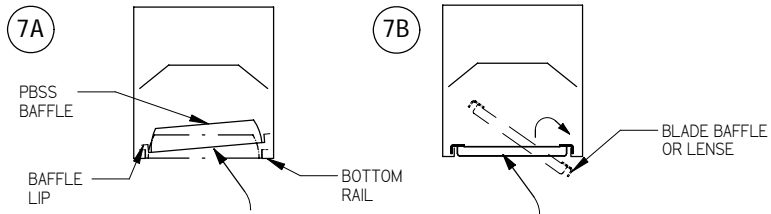
1. When a Wall bracket is required, Mount Bracket inline with the Brackets used to Hang the Adjacent Fixtures. Refer to Wall Bracket Instructions.
2. For access to mount corner to wall bracket or to bring wiring thru corner, remove wireway covers by unscrewing their sheetmetal screws.
3. Position Corner between adjacent fixtures and align the row mounting holes in the End Headers of both the fixtures and corner. Loosely Fasten corner to adjacent fixtures with (2) 1/4-20 screws and nuts provided as shown in View "A". Attach corner to wall bracket (if required) with washers and hex nuts provided.
4. Press a spline into each bottom rail between corner and fixtures for alignment.
5. Making sure all seams at each joint are flush with each other, tighten all nuts and screws.
6. Replace wireway covers and clean exterior surfaces.
7. **DIFFUSER INSTALLATION:**
Diffusers are shipped with corners and are supplied in 3 pieces for Blade and PBSS baffles. Lenses are supplied in 2 mitered sections.
A) PARABOLIC BAFFLES (PBSS or PBCWM) are shifted into opening and lowered into place by pulling down on baffle until lip sits on bottom rails.
B) LENSES and BLADE BAFFLES are shifted into opening and rest on top of bottom rails. Lenses are installed with the smooth side up.



PLAN VIEWS



DIFFUSER INSTALLATION



VIEW "A"

LITECONTROL

100 HAWKS AVENUE - HANSON MA 02341, (781-294-0100)