

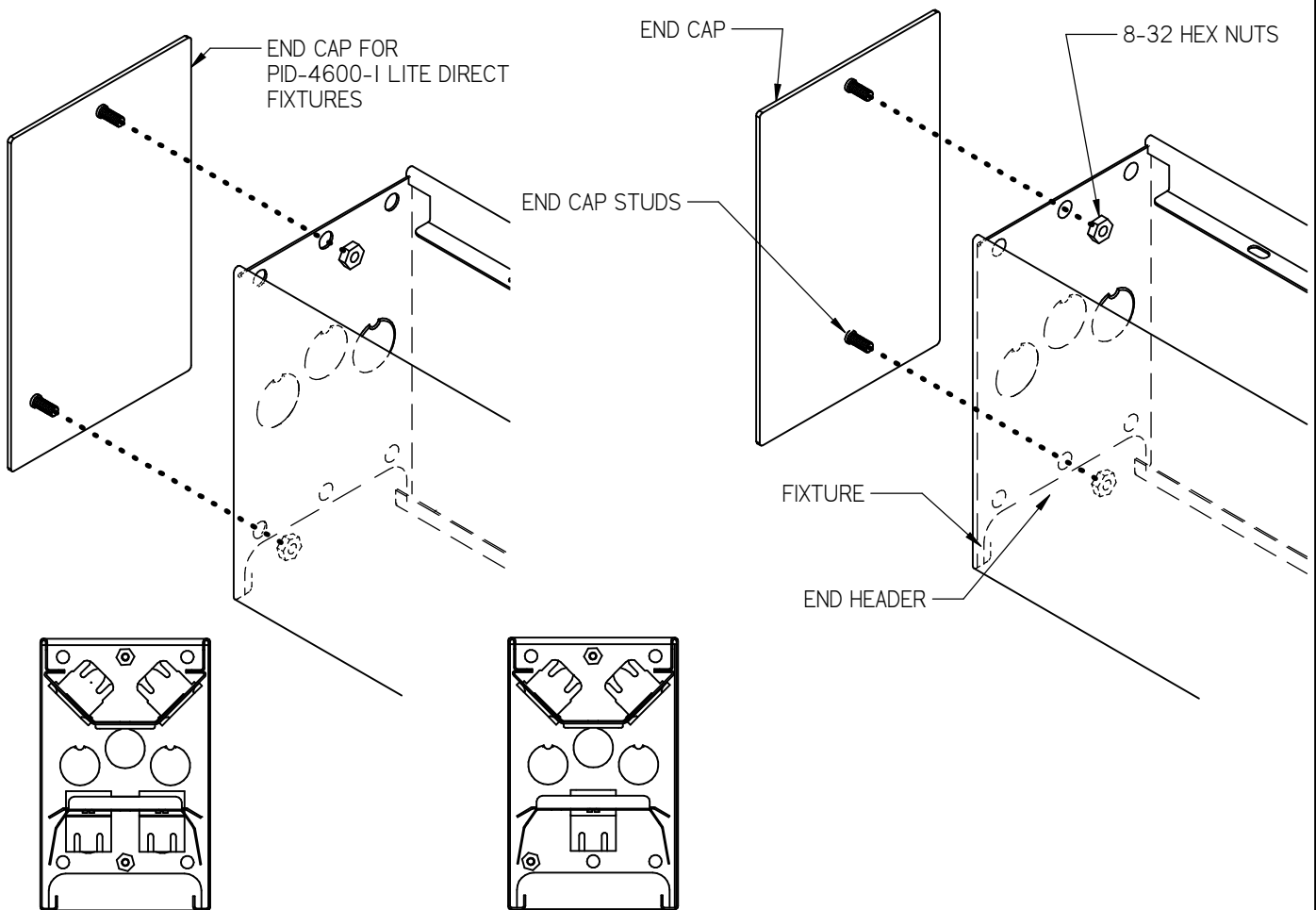
DO NOT MODIFY OR ALTER THIS PRODUCT IN ANY WAY, OR INSTALL IN ANY FASHION WHICH IS CONTRARY TO THE INSTRUCTIONS CONTAINED HEREIN.
IF YOU HAVE ANY QUESTIONS REGARDING THIS PRODUCT OR THE INSTALLATION OF IT, PLEASE CALL LITECONTROL ENGINEERING AT 781-294-0100.

GENERAL NOTES:

- A) THIS INSTRUCTION SHEET IS USED WITH THE APPLICABLE FIXTURE INSTRUCTION SHEETS.
- B) END CAPS ARE SUPPLIED IN TWO VERSIONS, ONE FOR PID-4600 FIXTURES WHERE THE MOUNTING STUDS ARE LOCATED IN THE CENTER OF THE END CAPS AND A SECOND VERSION FOR FIXTURES THAT HAVE THE DIRECT LAMP LOCATED AT THE CENTER OF FIXTURE AND BOTTOM STUD IS POSITION OFF CENTER AS SHOWN.
END CAPS ARE ATTACHED TO EACH END OF AN INDIVIDUALLY MOUNTED FIXTURE AND AT BOTH ENDS OF A ROW OF FIXTURES.

INSTRUCTIONS:

Align studs on End Cap with two of the six holes in the fixture End Headers and secure with (2) 8-32 hex nuts shipped with end caps.
Make sure end caps are flush and square with fixture before tightening nuts.



P-ID-4600

P-ID-4600 1 LITE DIRECT