

SUPPLEMENTAL INSTALLATION INSTRUCTIONS

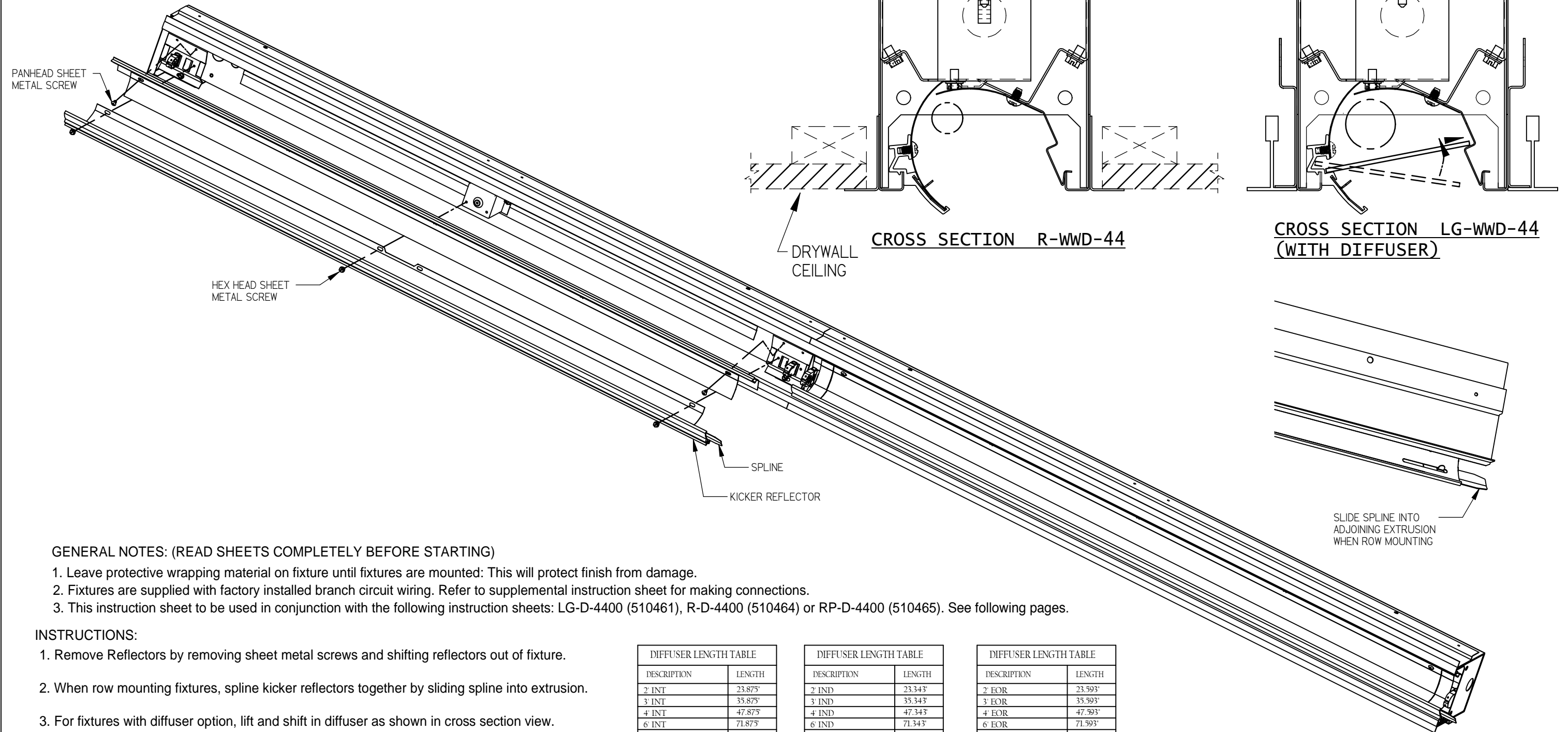
FIXTURE TYPE \_\_\_\_\_

LG-WWD-44, R-WWD-44 & RP-WWD-44 FIXTURE

P/C 510553-2000

PG. 1 OF 1

DO NOT MODIFY OR ALTER THIS PRODUCT IN ANY WAY, OR INSTALL IN ANY FASHION WHICH IS CONTRARY TO THE INSTRUCTIONS CONTAINED HEREIN. IF YOU HAVE ANY QUESTIONS REGARDING THIS PRODUCT OR THE INSTALLATION OF IT, PLEASE CALL LITECONTROL ENGINEERING AT 781-294-0100.



GENERAL NOTES: (READ SHEETS COMPLETELY BEFORE STARTING)

1. Leave protective wrapping material on fixture until fixtures are mounted: This will protect finish from damage.
2. Fixtures are supplied with factory installed branch circuit wiring. Refer to supplemental instruction sheet for making connections.
3. This instruction sheet to be used in conjunction with the following instruction sheets: LG-D-4400 (510461), R-D-4400 (510464) or RP-D-4400 (510465). See following pages.

INSTRUCTIONS:

1. Remove Reflectors by removing sheet metal screws and shifting reflectors out of fixture.
2. When row mounting fixtures, spline kicker reflectors together by sliding spline into extrusion.
3. For fixtures with diffuser option, lift and shift in diffuser as shown in cross section view.

DIFFUSER LENGTH TABLE	
DESCRIPTION	LENGTH
2' INT	23.875"
3' INT	35.875"
4' INT	47.875"
6' INT	71.875"
8' INT	95.875"

DIFFUSER LENGTH TABLE	
DESCRIPTION	LENGTH
2' IND	23.343"
3' IND	35.343"
4' IND	47.343"
6' IND	71.343"
8' IND	95.343"

DIFFUSER LENGTH TABLE	
DESCRIPTION	LENGTH
2' FOR	23.593"
3' FOR	35.593"
4' FOR	47.593"
6' FOR	71.593"
8' FOR	95.593"

**INSTALLATION INSTRUCTIONS**

**LGD-4400 FIXTURE**

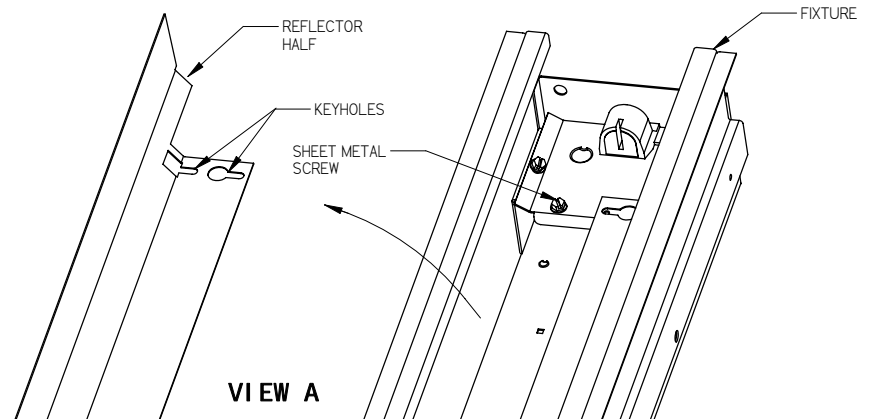
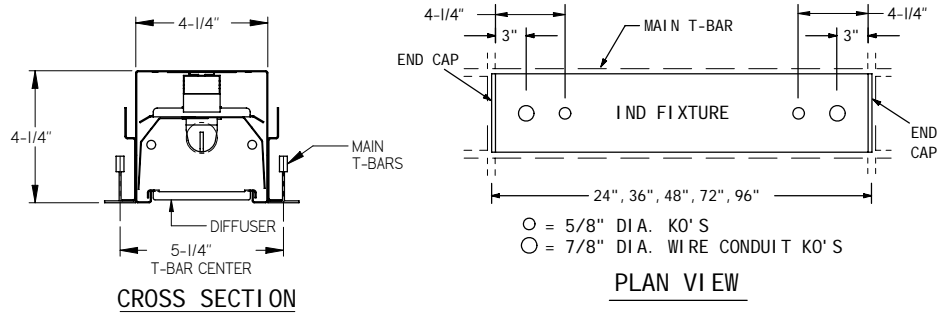
FIXTURE TYPE \_\_\_\_\_

P/C **510461-1000**

DATE: 10-28-08

PG. 1 OF 2

DO NOT MODIFY OR ALTER THIS PRODUCT IN ANY WAY, OR INSTALL IN ANY FASHION WHICH IS CONTRARY TO THE INSTRUCTIONS CONTAINED HEREIN.  
IF YOU HAVE ANY QUESTIONS REGARDING THIS PRODUCT OR THE INSTALLATION OF IT, PLEASE CALL LITECONTROL ENGINEERING AT 781-294-0100.



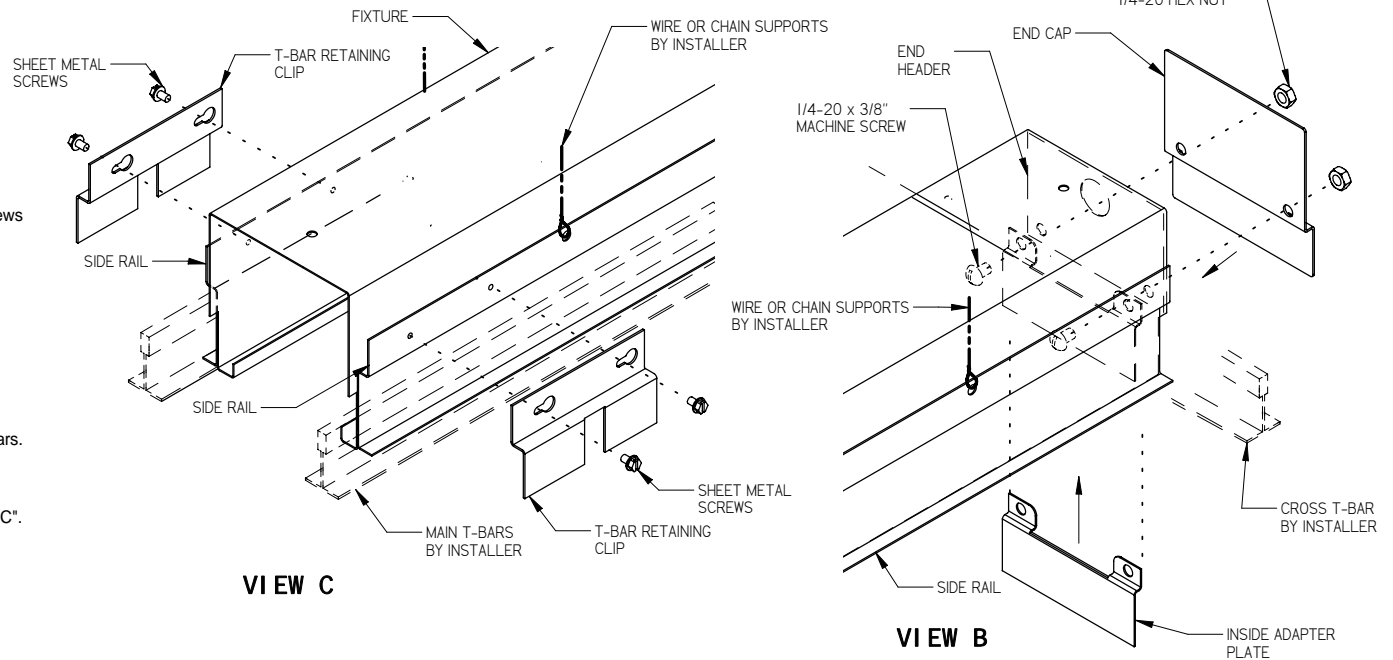
**GENERAL NOTES: (READ SHEETS COMPLETELY BEFORE STARTING)**

1. Leave protective wrapping material on fixture until fixtures are mounted: This will protect finish from damage.
2. Fixtures are supplied with factory installed branch circuit wiring. Refer to supplemental instruction sheet for making connections.
3. All ceiling T-bars must be installed before fixtures are mounted in ceiling.

**INSTRUCTIONS:**

1. Remove Reflector Halves from fixture by loosening (2 or 4) sheet metal screws and shifting them out thru keyholes. See View "A".
2. **MOUNTING INDIVIDUAL (IND) FIXTURES:**
  - A) Remove a 5/8" KO. or a 7/8" KO. at wire feed location in top of fixture as shown in Plan View above.
  - B) Align an Inside Adaptor Plate (shipped separately) with End Header holes and holes in End Cap; secure with (2) 1/4-20 x 3/8" long machine screws and hex nuts. See View "B". Repeat at opposite end of fixture.
  - C) Lift fixture up into ceiling plenum and seat fixture Side Rails onto main T-bars. Attach T-bar Retaining Clips (shipped separately) to each Side Rail with (2) sheet metal screws. (2) clips are required for 24", 36" & 48" length fixtures and (6) clips are required for 72" & 96" length fixtures. See View "C".
  - D) 1/4" holes have been provided in the side rails for supplementary chain or wire support as may be required by local codes. Installed weight of fixture is approximately 5 lbs per ft of fixture length.
  - E) Bring wire feed thru KO and make connections in fixture wireway.

GO TO STEP 5 ON PAGE 2



**LITECONTROL**

100 HAWKS AVENUE - HANSON MA 02341, (781-294-0100)

**INSTALLATION INSTRUCTIONS**

FIXTURE TYPE \_\_\_\_\_

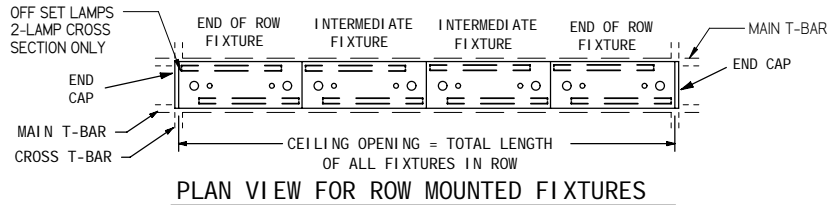
**LGD-4400 FIXTURE**

P/C **510461-1000**

DATE: 10-28-08

PG. 2 OF 2

DO NOT MODIFY OR ALTER THIS PRODUCT IN ANY WAY, OR INSTALL IN ANY FASHION WHICH IS CONTRARY TO THE INSTRUCTIONS CONTAINED HEREIN.  
IF YOU HAVE ANY QUESTIONS REGARDING THIS PRODUCT OR THE INSTALLATION OF IT, PLEASE CALL LITECONTROL ENGINEERING AT 781-294-0100.



**3. MOUNTING ROWS OF FIXTURES:**

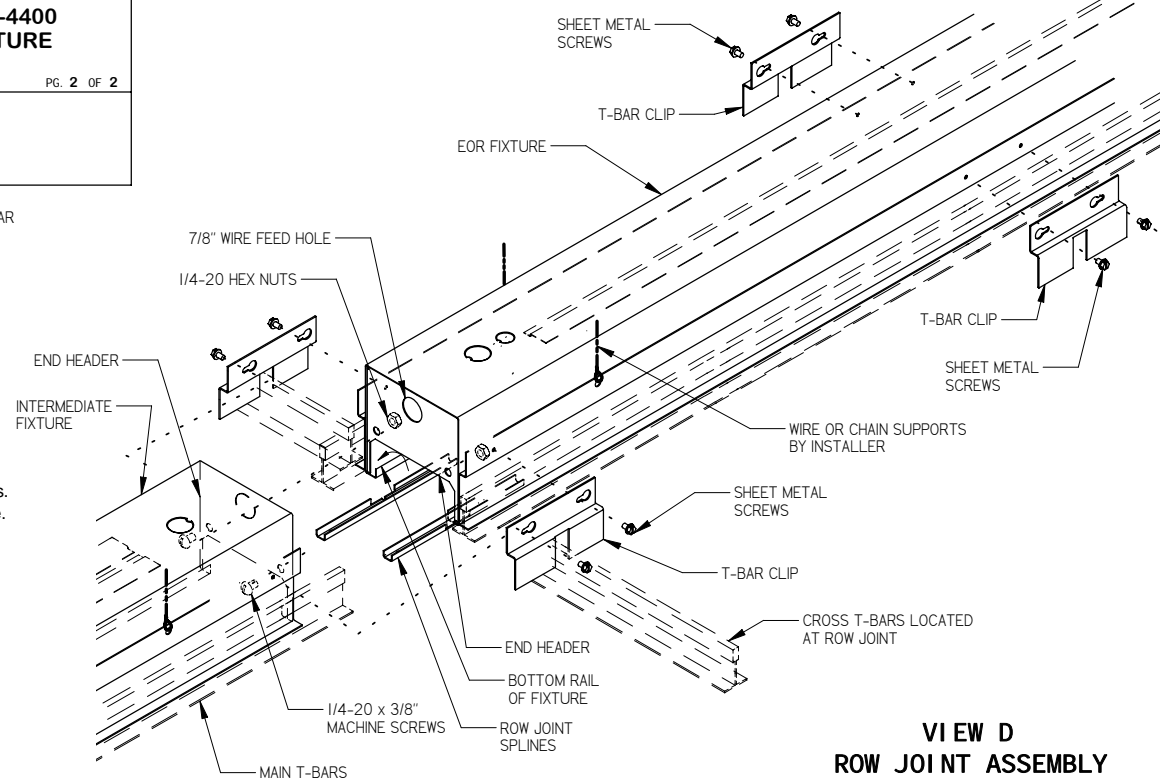
NOTE: Fixtures mounted together in continuous rows will consist of End of Row (EOR) and Intermediate (INT) type fixtures. Individual (IND) type fixtures cannot be mounted in continuous rows. Two lamp cross section fixtures have offset lamp locations, position fixtures in rows as shown above.

- A) Starting with an End of Row fixture, attach an Inside Adaptor Plate and End Cap to notched end of housing per Step 2B on page 1.
  - B) Remove a KO in top of housing for wire feed and install EOR fixture into ceiling per Steps 2C & 2D.
  - C) Lift an Intermediate fixture up into ceiling opening and abutt the EOR fixture. See View "D". Loosely bolt this fixture to EOR fixture at row joint with (2) 1/4-20 x 3/8" long machine screws and nuts.
  - D) Press a Spline (found in polybag) into each bottom rail at row joint for alignment.
  - E) Level each fixture and align seams at row joint before tightening all screws.
  - F) Mount T-Bar Retaining Clips per step 2C. Attach (2) more clips at row joint. Repeat steps 3C, 3D, 3E & 3F for each additional Intermediate fixture in row.
  - G) Install another Inside Adaptor Plate and End Cap in the last EOR fixture in row before installing into ceiling.
4. Bring wire feed thru the 7/8" holes in the end headers and make connections.  
NOTE: **EOR FIXTURES** with 2 circuit wiring (2CWQ) will require one of the EOR fixture's Black and Red circuit wires be switched when connecting to the mating INT fixture to maintain inline lighting when powered.
  5. Replace all Reflector Halves and remove all wrapping material.
  6. Clean fixture exteriors with a general window cleaner and install lamps (by others).  
Install lamps by inserting lamp pins into sockets and rotating lamp 90 degrees to lock in place.

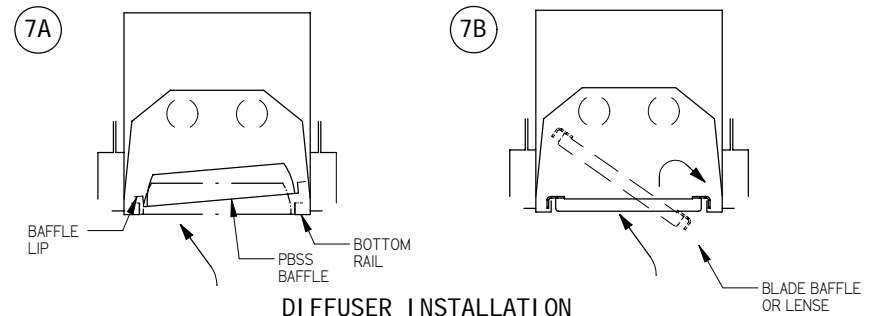
**7. DIFFUSER INSTALLATION:**

Use caution when installing diffusers to prevent lamp damage.

- A) **PARABOLIC BAFFLES (PBSS or PBCWM)** are shifted into fixture opening and lowered into place by pulling down on baffle until lip sits on bottom rails
- B) **LENSES and BLADE BAFFLES** are shifted into fixture opening and rest on top of bottom rails. Lenses are installed with the smooth side up.



**VIEW D  
ROW JOINT ASSEMBLY**



**DI DIFFUSER I NSTALLATI ON**

**INSTALLATION INSTRUCTIONS**

FIXTURE TYPE \_\_\_\_\_

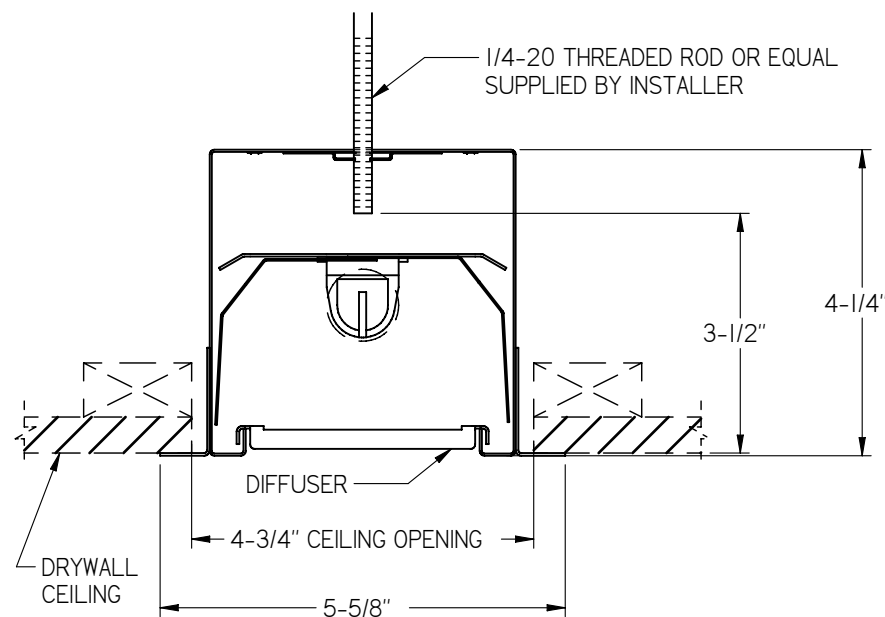
**R-D-4400 FIXTURE**

P/C **510464-1000**

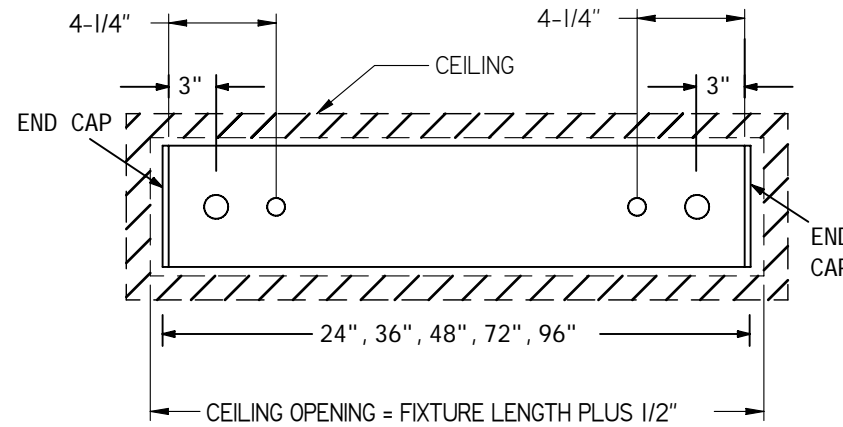
DATE: 10-28-08

PG. 1 OF 2

DO NOT MODIFY OR ALTER THIS PRODUCT IN ANY WAY, OR INSTALL IN ANY FASHION WHICH IS CONTRARY TO THE INSTRUCTIONS CONTAINED HEREIN. IF YOU HAVE ANY QUESTIONS REGARDING THIS PRODUCT OR THE INSTALLATION OF IT, PLEASE CALL LITECONTROL ENGINEERING AT 781-294-0100.

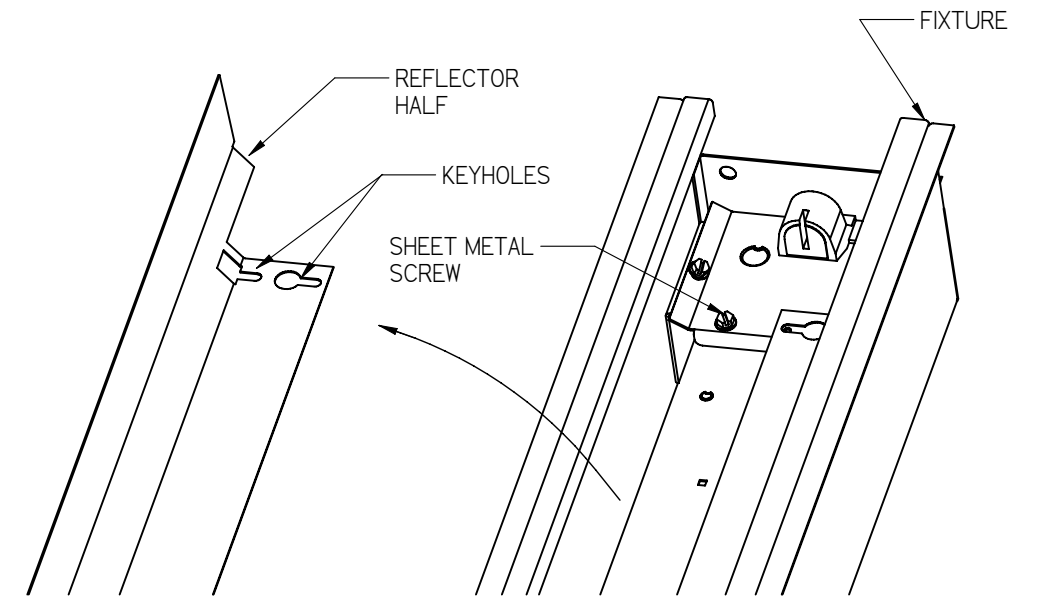


**CROSS SECTION**

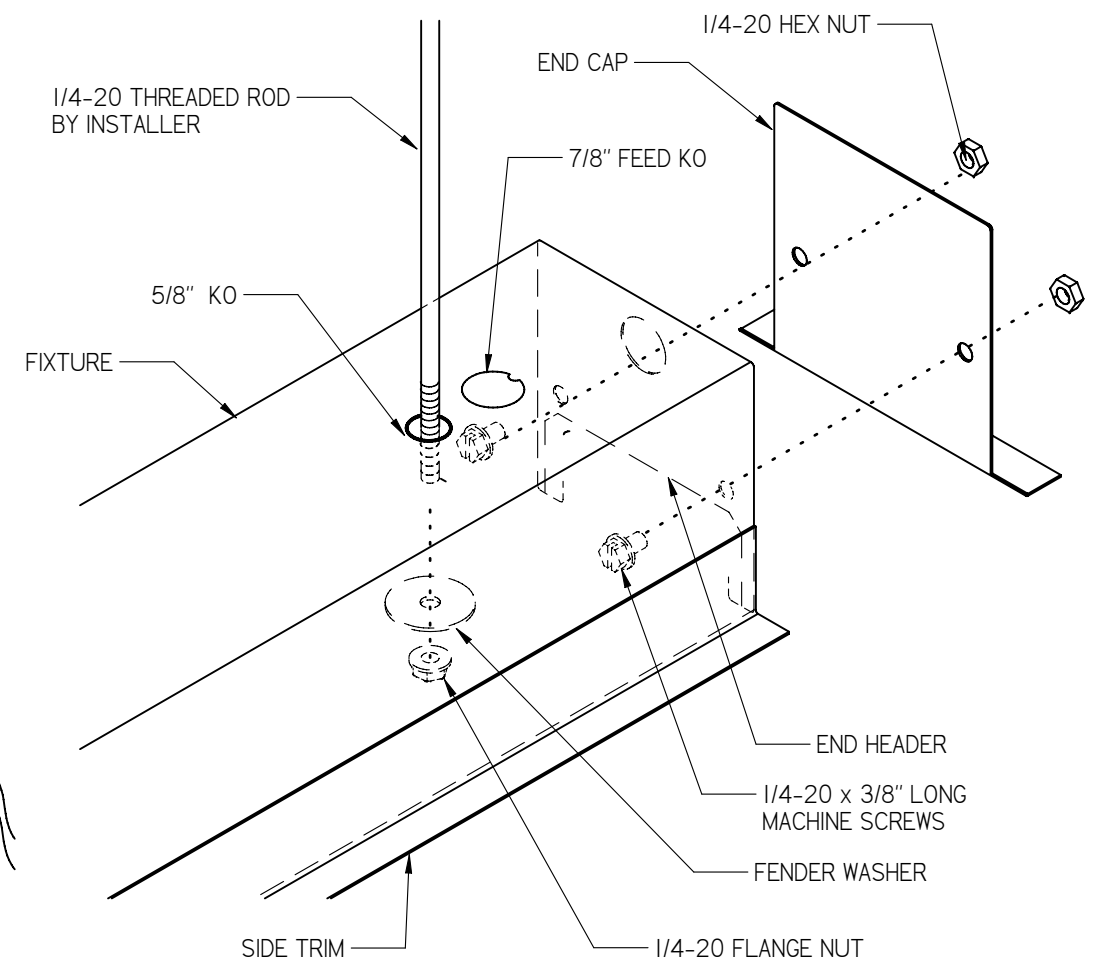


○ = 1/4-20 THREADED ROD LOCATIONS  
○ = 7/8" DIA. FEED KO'S

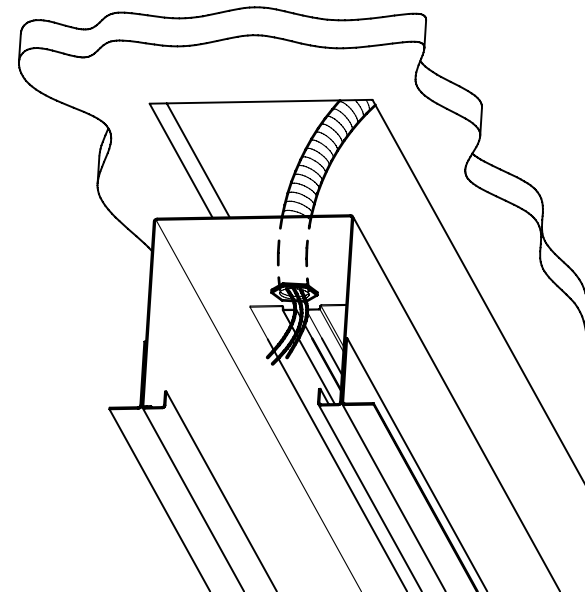
**PLAN VIEW**



**VIEW A**



**VIEW B**



**VIEW C**

**GENERAL NOTES: (READ SHEETS COMPLETELY BEFORE STARTING)**

1. Leave protective wrapping material on fixture until fixtures are mounted: This will protect finish from damage.
2. Fixtures are supplied with factory installed branch circuit wiring. Refer to supplemental instruction sheet for making connections.
3. Fixtures are mounted in a drywall ceiling supported with (2) 1/4-20 threaded rods or equal attached to overhead structure supplied by installer. Approximate weight of fixture is 5 lbs per foot of fixture length.

**INSTRUCTIONS:**

1. Remove Reflector Halves from fixture by loosening (2 or 4) sheet metal screws and shifting them out thru keyholes. See View "A".
2. MOUNTING INDIVIDUAL FIXTURES:
  - A) Remove a 7/8" KO in top of housing at electrical feed location. Remove both 5/8" ko's at ends of housing for threaded rod attachment
  - B) Locate and install (2) 1/4-20 threaded rods in ceiling at locations shown in Plan View. Note threaded rods must end 3-1/2" above finished ceiling as shown in cross section.
  - C) Mount End Caps (shipped separately) to both ends of fixture with (2) 1/4-20 screws and nuts as shown in View "B". Bottom edge of End Caps must be flush with bottom of housing side trims.
  - D) Lift fixture up near ceiling opening and bring electrical feed into fixture wireway. See View "C". Raise fixture up flush to ceiling opening and secure to threaded rods with fender washers and flange nuts (found in polybag): See View "B".
  - E) Make electrical connections in fixture wireway.

**GO TO STEP 5 ON PAGE 2**

**INSTALLATION INSTRUCTIONS**

**R-D-4400  
FIXTURE**

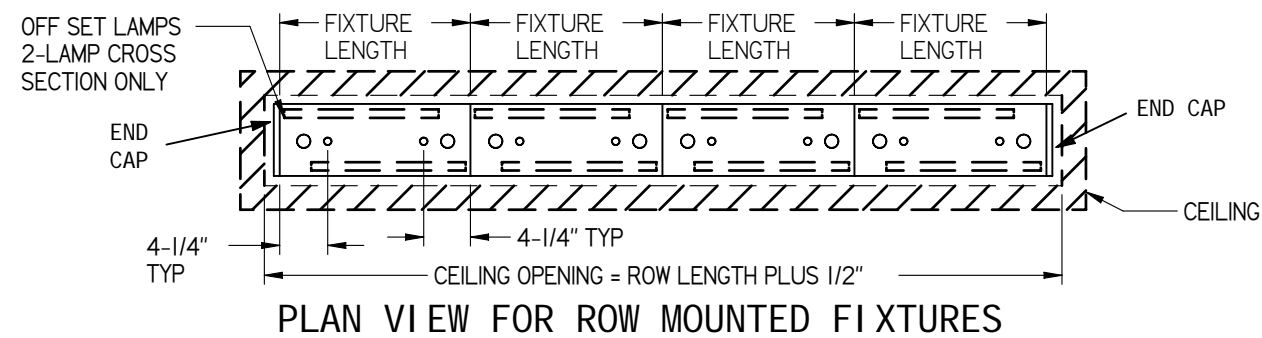
FIXTURE TYPE \_\_\_\_\_

P/C **510464-1000**

DATE: 10-28-08

PG. 2 OF 2

DO NOT MODIFY OR ALTER THIS PRODUCT IN ANY WAY, OR INSTALL IN ANY FASHION WHICH IS CONTRARY TO THE INSTRUCTIONS CONTAINED HEREIN.  
IF YOU HAVE ANY QUESTIONS REGARDING THIS PRODUCT OR THE INSTALLATION OF IT, PLEASE CALL LITECONTROL ENGINEERING AT 781-294-0100.



**3. MOUNTING ROWS OF FIXTURES:**

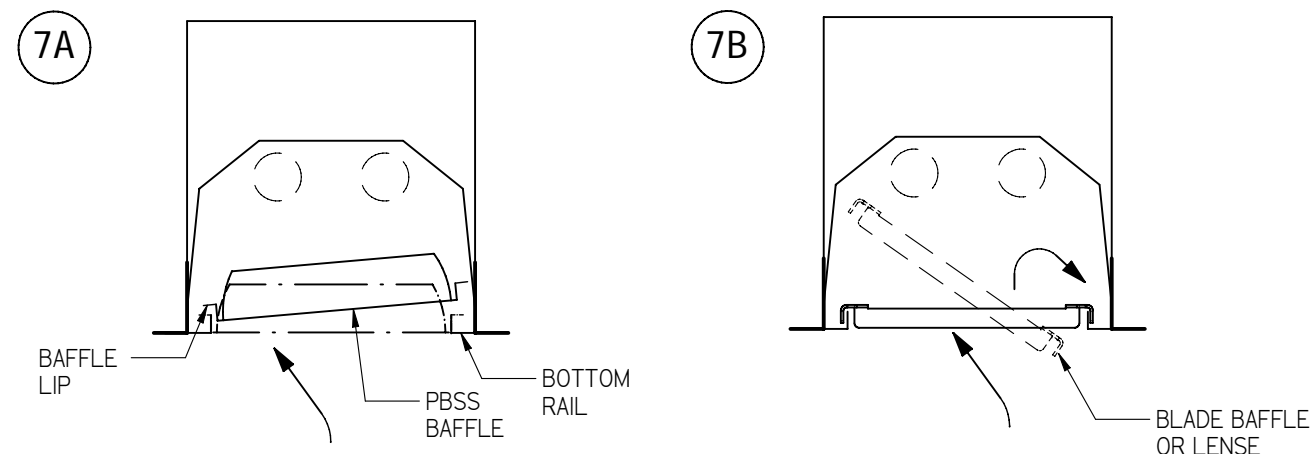
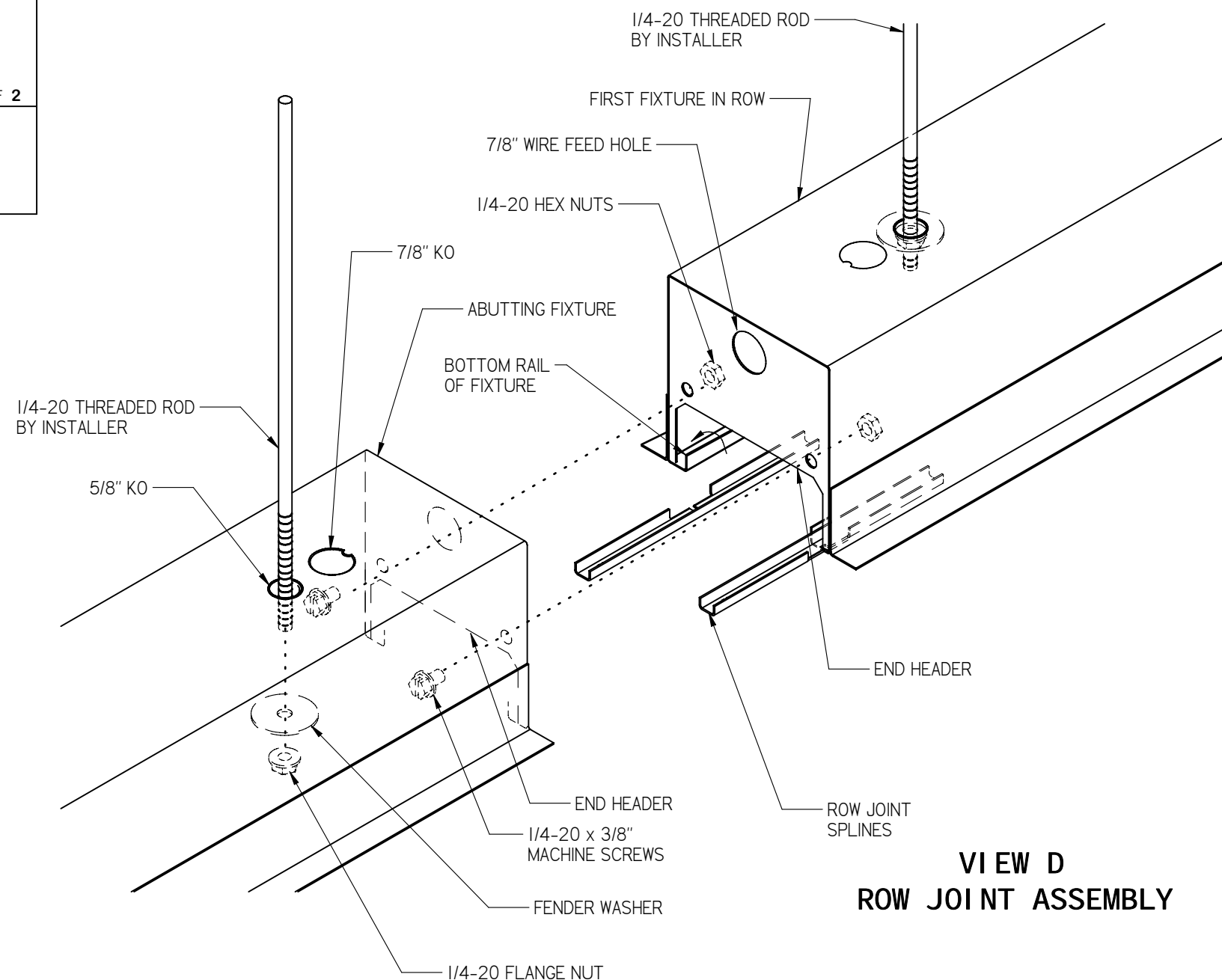
NOTE: Fixtures are installed in ceiling opening connected to each other at row joint per steps below.  
Two lamp cross section fixtures have offset lamp locations, position fixtures in rows as shown above.

- A) Locate and install (2) 1/4-20 threaded rods per fixture in ceiling as shown in Plan View above. Note threaded rods must end 3-1/2" above finished ceiling as shown in cross section on page 1.
  - B) Starting with the first fixture in row, attach an End Cap to one end of fixture per step 2C.
  - C) Remove a 7/8" KO in top of housing for wire feed and the 5/8" KO's at each end of fixture for threaded rods.
  - D) Lift and install fixture into ceiling opening per step 2D
  - E) Remove the 5/8" KO's in the top of the next fixture in the row and install into ceiling: See View "D". Loosely bolt this fixture to the first fixture at row joint with (2) 1/4-20 x 3/8" long machine screws and nuts. Branch circuit wires can be brought thru 7/8" holes in end headers at each row joint.
  - F) Press a Spline (found in polybag) into each bottom rail at row joint for alignment.
  - G) Level each fixture and align seams at row joint before tightening all screws.
  - H) Repeat steps 3C, 3D, & 3E for each additional fixture in row. Install another End Cap onto the last fixture in the row before installing into ceiling.
4. Make all wiring connections in fixture wireways.
  5. Replace all Reflector Halves and remove all wrapping material.
  6. Clean fixture exteriors with a general window cleaner and install lamps (by others). Install lamps by inserting lamp pins into sockets and rotating lamp 90 degrees to lock in place.

**7. DIFFUSER INSTALLATION:**

Use caution when installing diffusers to prevent lamp damage.

- A) PARABOLIC BAFFLES (PBSS or PBCWM) are shifted into fixture opening and lowered into place by pulling down on baffle until lip sits on bottom rails
- B) LENSES and BLADE BAFFLES are shifted into fixture opening and rest on top of bottom rails. Lenses are installed with the smooth side up.



**INSTALLATION  
INSTRUCTIONS**

FIXTURE TYPE \_\_\_\_\_

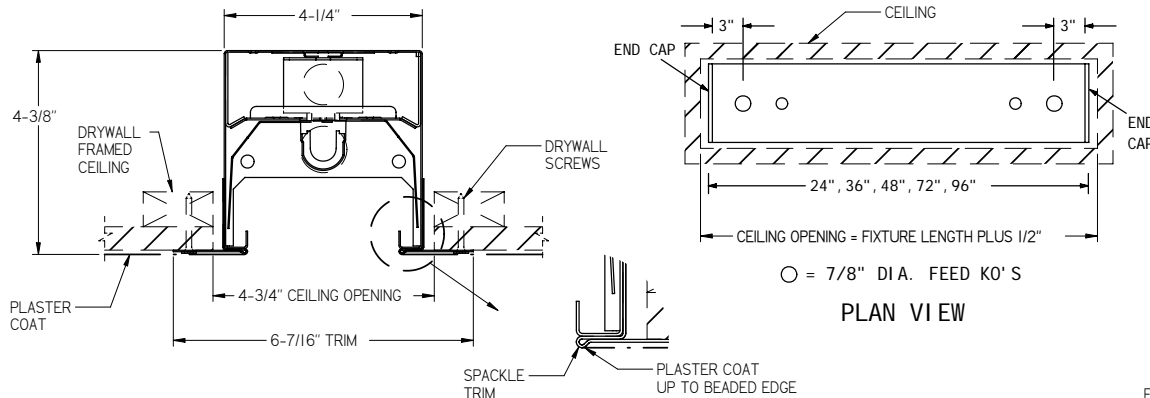
**RP-D-4400  
FIXTURE**

P/C **510465-1000**

DATE: 10-28-08

PG. 1 OF 2

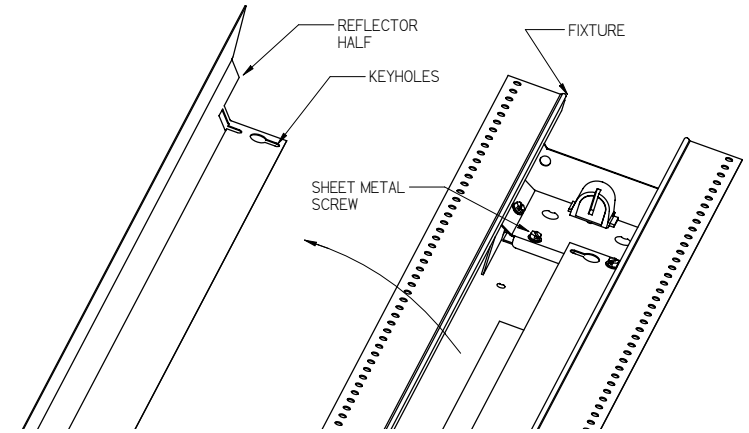
DO NOT MODIFY OR ALTER THIS PRODUCT IN ANY WAY, OR INSTALL IN ANY FASHION WHICH IS CONTRARY TO THE INSTRUCTIONS CONTAINED HEREIN.  
IF YOU HAVE ANY QUESTIONS REGARDING THIS PRODUCT OR THE INSTALLATION OF IT, PLEASE CALL LITECONTROL ENGINEERING AT 781-294-0100.



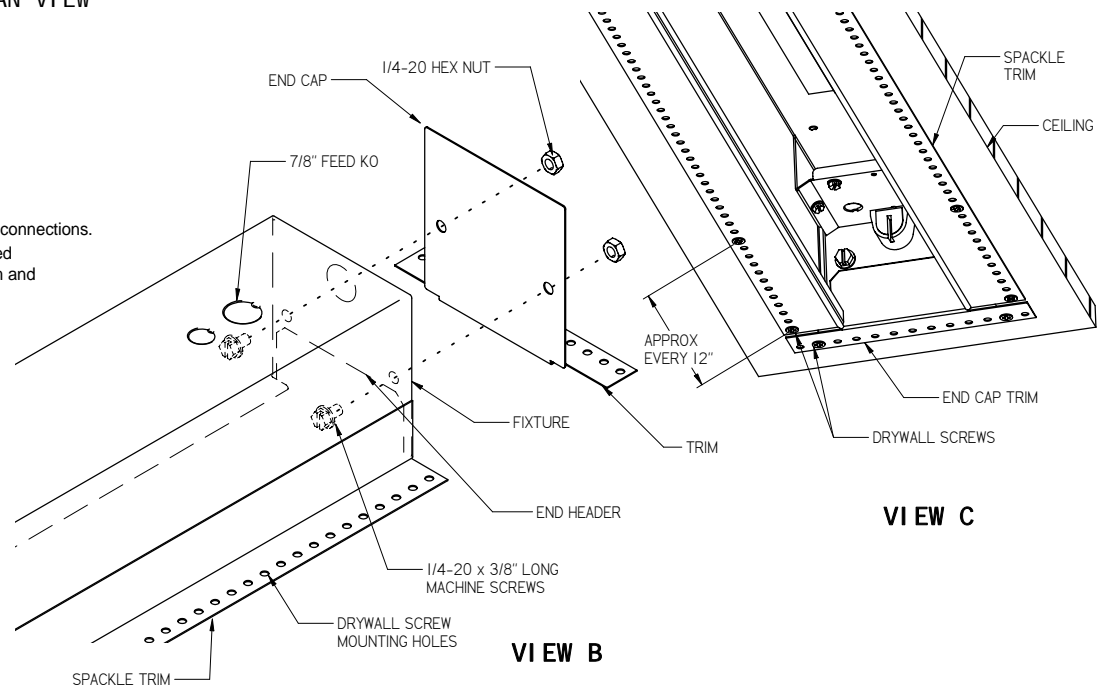
**CROSS SECTION**

**PLAN VIEW**

○ = 7/8" DIA. FEED KO'S



**VIEW A**



**VIEW B**

**VIEW C**

**GENERAL NOTES: (READ SHEETS COMPLETELY BEFORE STARTING)**

1. Leave protective wrapping material on fixture until fixtures are mounted: This will protect finish from damage.
2. Fixtures are supplied with factory installed branch circuit wiring. Refer to supplemental instruction sheet for making connections.
3. Fixtures are mounted in a drywall framed plaster ceiling supported with drywall screws (supplied by installer) inserted thru holes in fixture Spackle Trims and End Caps. Drywall Screws are placed in holes at both ends of Spackle Trim and approximately every 12" along length of fixture. A minimum of two screws is required thru each End Cap trim. Approximate weight of fixture is 5 lbs per foot of fixture length.

**INSTRUCTIONS:**

1. Remove Reflector Halves from fixture by loosening (2 or 4) sheet metal screws and shifting them out thru keyholes. See View "A".
2. **MOUNTING INDIVIDUAL FIXTURES:**
  - A) Remove a 7/8" KO in top of housing at electrical feed location.
  - B) Mount End Caps (shipped separately) to both ends of fixture with (2) 1/4-20 screws and nuts as shown in View "B". Bottom edge of End Caps must be flush with bottom of housing trims.
  - C) Lift fixture up near ceiling opening and bring electrical feed into fixture wireway.  
Raise fixture up thru ceiling opening and secure spackle trims to drywall with drywall screws. See View "C".
  - D) Make electrical connections in fixture wireway.

**GO TO STEP 5 ON PAGE 2**

**INSTALLATION INSTRUCTIONS**

FIXTURE TYPE \_\_\_\_\_

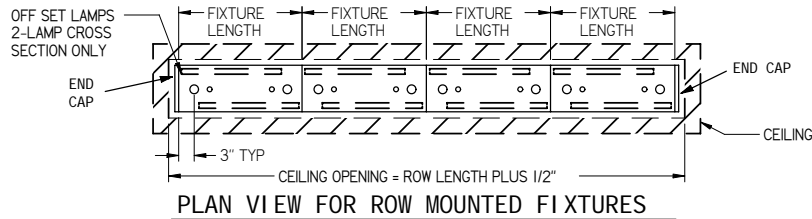
**RP-D-4400 FIXTURE**

P/C **510465-1000**

DATE: 10-28-08

PG. 2 OF 2

DO NOT MODIFY OR ALTER THIS PRODUCT IN ANY WAY, OR INSTALL IN ANY FASHION WHICH IS CONTRARY TO THE INSTRUCTIONS CONTAINED HEREIN.  
IF YOU HAVE ANY QUESTIONS REGARDING THIS PRODUCT OR THE INSTALLATION OF IT, PLEASE CALL LITECONTROL ENGINEERING AT 781-294-0100.



**3. MOUNTING ROWS OF FIXTURES:**

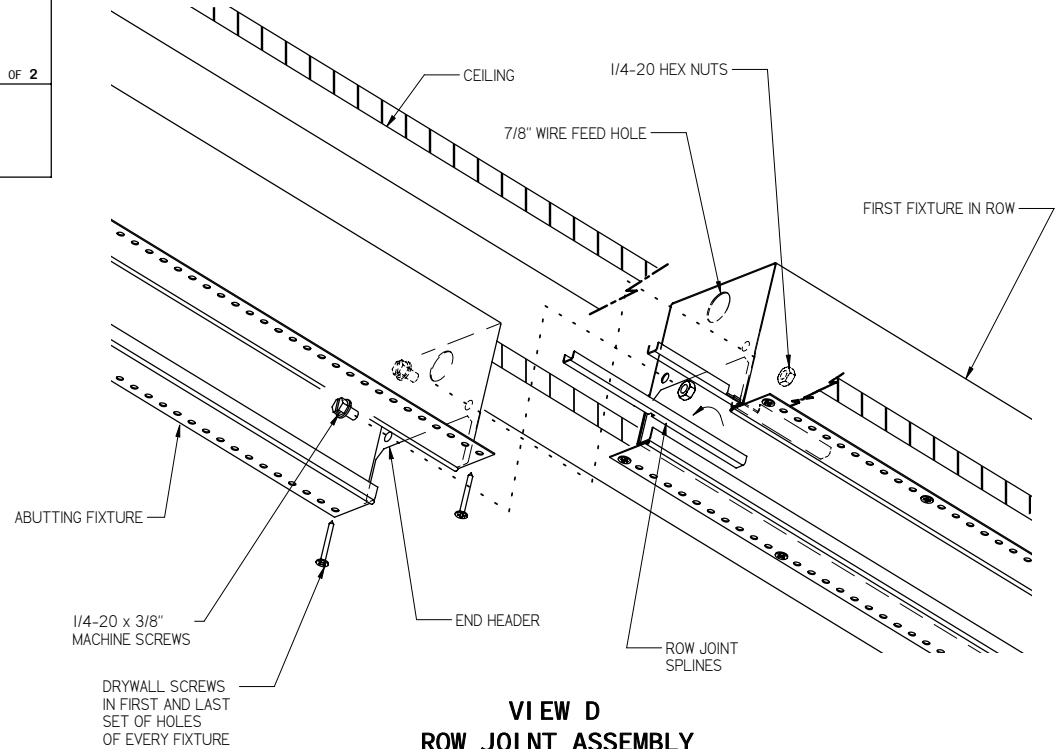
NOTE: Fixtures are installed in ceiling opening connected to each other at row joint per steps below.  
Two lamp cross section fixtures have offset lamp locations, position fixtures in rows as shown above.

- A) Starting with the first fixture in row, attach an End Cap to one end of fixture per step 2B.
- B) Remove a 7/8" KO in top of housing for wire feed.
- C) Lift and install fixture into ceiling opening per step 2C.
- D) Lift and install the next fixture in row into ceiling opening making sure that spackle trim butts up against trim of first fixture before \*loosely securing with drywall screws: See View "D".  
Bolt this fixture to the first fixture at row joint with (2) 1/4-20 x 3/8" long machine screws and nuts.
- \*NOTE: Use the row mounting screws and splines to align fixtures in a straight line before tightening drywall screws.  
Branch circuit wires can be routed thru 7/8" holes in end headers at each row joint.
- E) Press a Spline (found in polybag) into each bottom rail at row joint for alignment.
- F) Level each fixture and align seams at row joint before tightening all screws.
- G) Repeat steps 3D, 3E, & 3F for each additional fixture in row.  
Attach another End Cap onto the last fixture in the row before installing into ceiling.

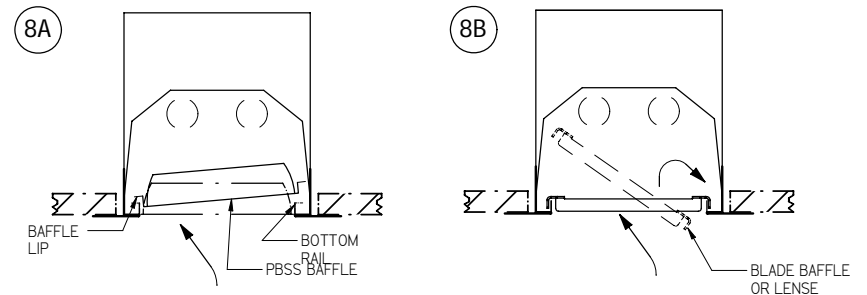
- 4. Make all wiring connections in fixture wireways.
- 5. Replace all Reflector Halves and remove all wrapping material.
- 6. Clean exposed fixture exterior surfaces with a general window cleaner.
- 7. Apply finish plaster coat over Spackle Trims, covering drywall screws. Plaster coat up to beaded edge of trim as shown on page 1. Avoid getting plaster on inside surfaces of fixture.
- 8. **LAMP AND DIFFUSER INSTALLATION:**

Install lamps (by others) by inserting lamp pins into sockets and rotating lamp 90 degrees to lock in place.  
Use caution when installing diffusers to prevent lamp damage.

- A) PARABOLIC BAFFLES (PBSS or PBCWM) are shifted into fixture opening and lowered into place by pulling down on baffle until lip sits on bottom rails
- B) LENSES and BLADE BAFFLES are shifted into fixture opening and rest on top of bottom rails.  
Lenses are installed with the smooth side up.



**VIEW D  
ROW JOINT ASSEMBLY**



**DIFFUSER INSTALLATION**