

**INSTALLATION INSTRUCTIONS**

P/C **510574-3000**

FIXTURE TYPE \_\_\_\_\_

**WALLSLOT 8400 SYSTEM CONNECTORS STRAIGHT EXTENSION [SE]**

PG. 1 OF 6

**Revised Mounting Location as of 1st Quarter 2012**

DO NOT MODIFY OR ALTER THIS PRODUCT IN ANY WAY, OR INSTALL IN ANY FASHION WHICH IS CONTRARY TO THE INSTRUCTIONS CONTAINED HEREIN. IF YOU HAVE ANY QUESTIONS REGARDING THIS PRODUCT OR THE INSTALLATION OF IT, PLEASE CALL LITECONTROL ENGINEERING AT 781-294-0100.

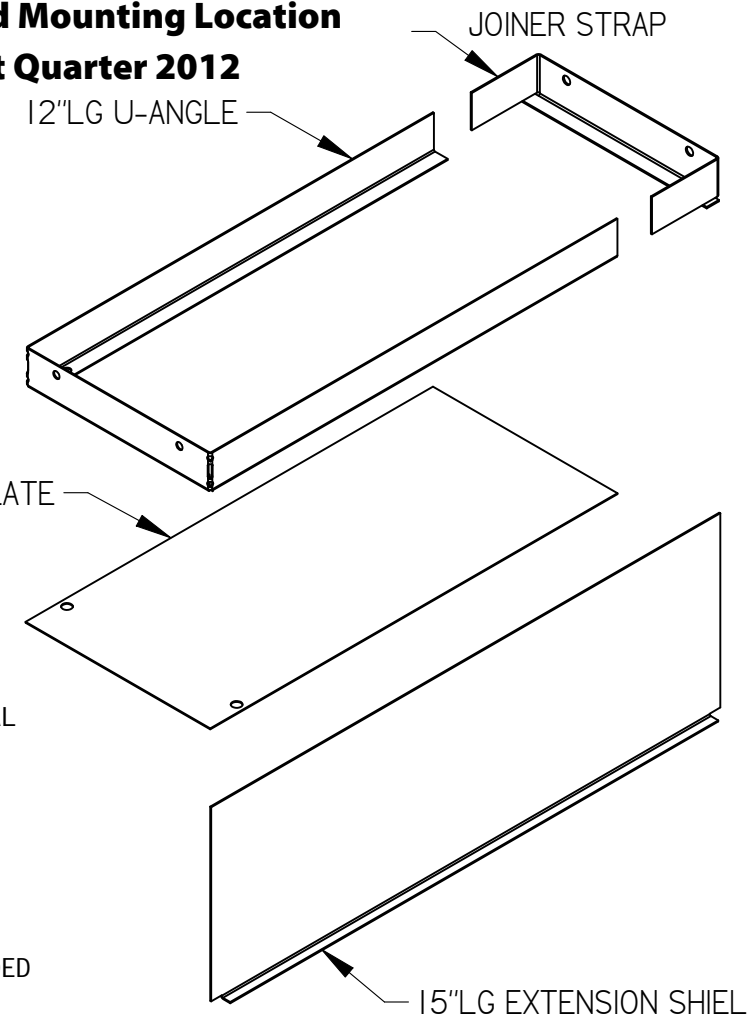
**NOTES: STRAIGHT EXTENSIONS (SE) ARE INSTALLED AT ENDS OF ROW TO CLOSE OFF CEILING OPENING.**

- A. FIXTURES MUST BE INSTALLED PRIOR TO ATTACHING STRAIGHT EXTENSIONS.
- B. STRAIGHT EXTENSIONS ARE SHIPPED SEPARATELY AND BULK PACKAGED.
- C. REFER TO PAGES 3 THRU 5 FOR INSTALLING 90 AND 135 DEGREE CORNERS.
- D. REFER TO PAGE 6 FOR INSTALLING PLENUM END CAPS.

**INSTRUCTIONS:**

1. WITH FIXTURES CENTRALLY POSITIONED IN ROW, MEASURE THE DISTANCE FROM END OF FIXTURE TO ADJACENT WALL SURFACE SHOWN IN PLAN VIEW AS DIM "X". SAWCUT ENDS OF U-ANGLES AND FILLER PLATES AS SHOWN TO DIM "X" MINUS 1/8".
2. INSERT JOINER STRAP INTO ENDS OF TRIMMED U-ANGLE AND SECURE WITH (2) U-CLIPS.
3. LIFT JOINER STRAP/U-ANGLE ASSEMBLY INTO CEILING OPENING AND SECURE TO FIXTURE END HEADER WITH (2) 8-32 x 3/8" LONG SCREWS AND NUTS. ATTACH OPPOSITE END OF U-ANGLE TO WALL SURFACE WITH DRYWALL SCREWS OR EQUAL MAKING SURE THAT U-ANGLE IS LEVEL. INSERT PLUG BUTTON INTO OPEN 7/8" HOLE IN END HEADER.
4. INSERT EXTENSION SHIELD INTO BOTTOM HEM OF HOUSING AND SLIDE UP AGAINST ADJACENT WALL. SECURE SHIELD TO TOP OF U-ANGLE WITH ONE U-CLIP.
5. TUCK THE TRIMMED EDGE OF THE FILLER PLATE INTO BOTTOM FLANGE OF THE JOINER STRAP AND SECURE TO BOTTOM OF U-ANGLE WITH NYLON DART FASTENERS.
6. FOR R POSITION DIFFUSERS, TRIM EXTRA PIECE OF DIFFUSER WALL ANGLE TO DIM "X" LENGTH AND APPLY DOUBLE SIDED TAPE TO BACK SURFACE. PRESS WALL ANGLE ONTO EXTENSION SHIELD IN LINE WITH DIFFUSER ANGLE OF FIXTURE.

12"LG FILLER PLATE



ROLL OF DOUBLE SIDED TAPE REQUIRED FOR R/POSITION WALL ANGLES (SEE STEP 6)

(3) U-CLIPS

7/8" PLUG BUTTON

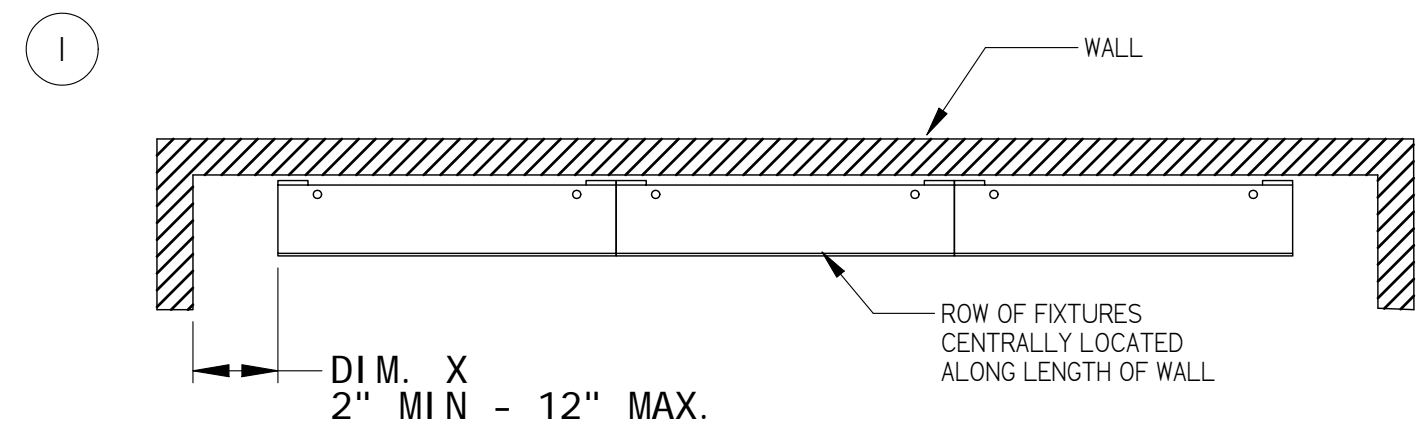
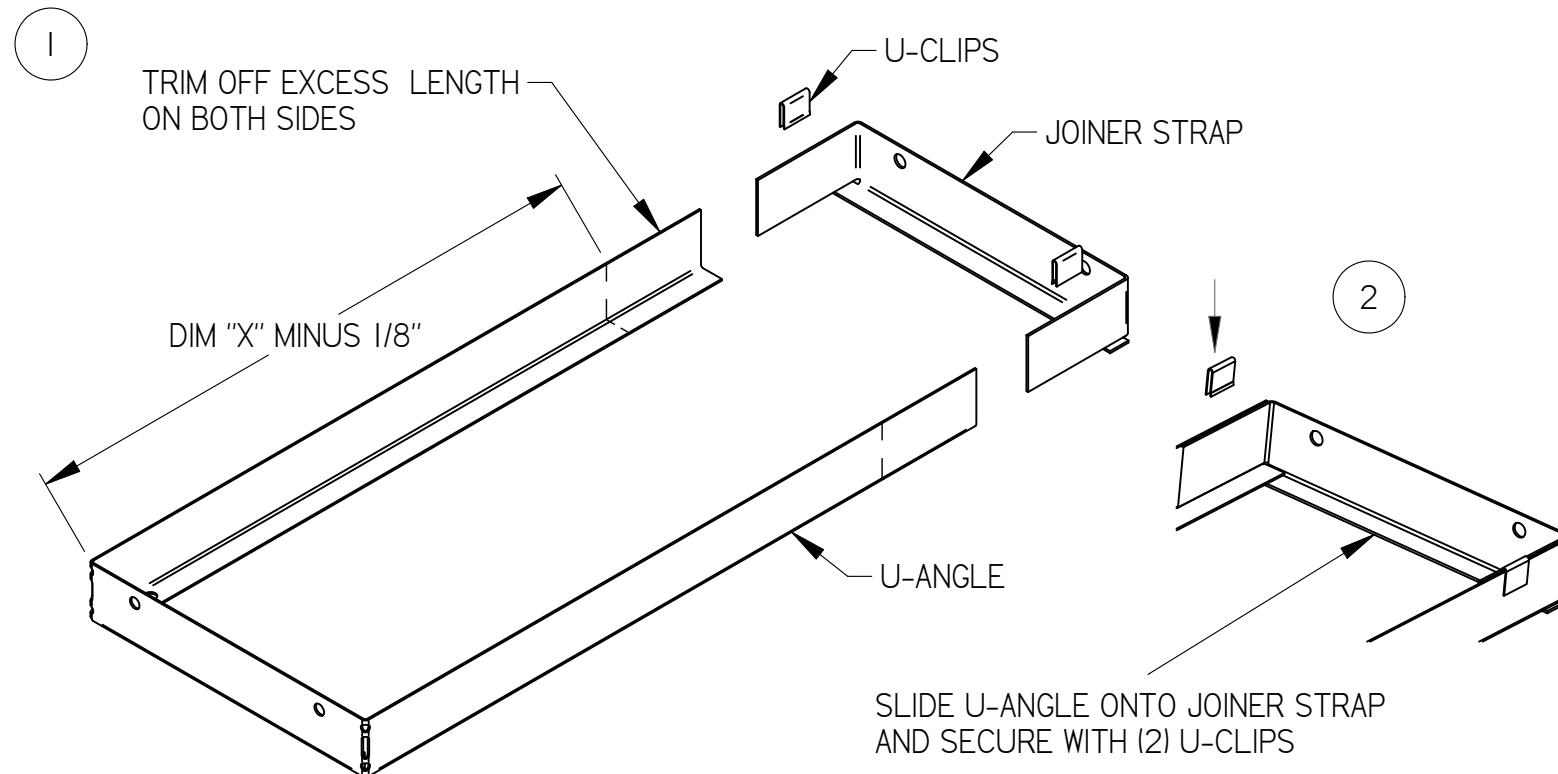
(3) DART FASTENERS

(2) 8-32 HEX NUTS

(2) 8-32 x 3/8" LG MACHINE SCREWS

**POLYBAG KIT**

**ITEMS SUPPLIED PER EACH SE KIT**



**PLAN VIEW OF ROW**

INSTALLATION INSTRUCTIONS

FIXTURE TYPE \_\_\_\_\_

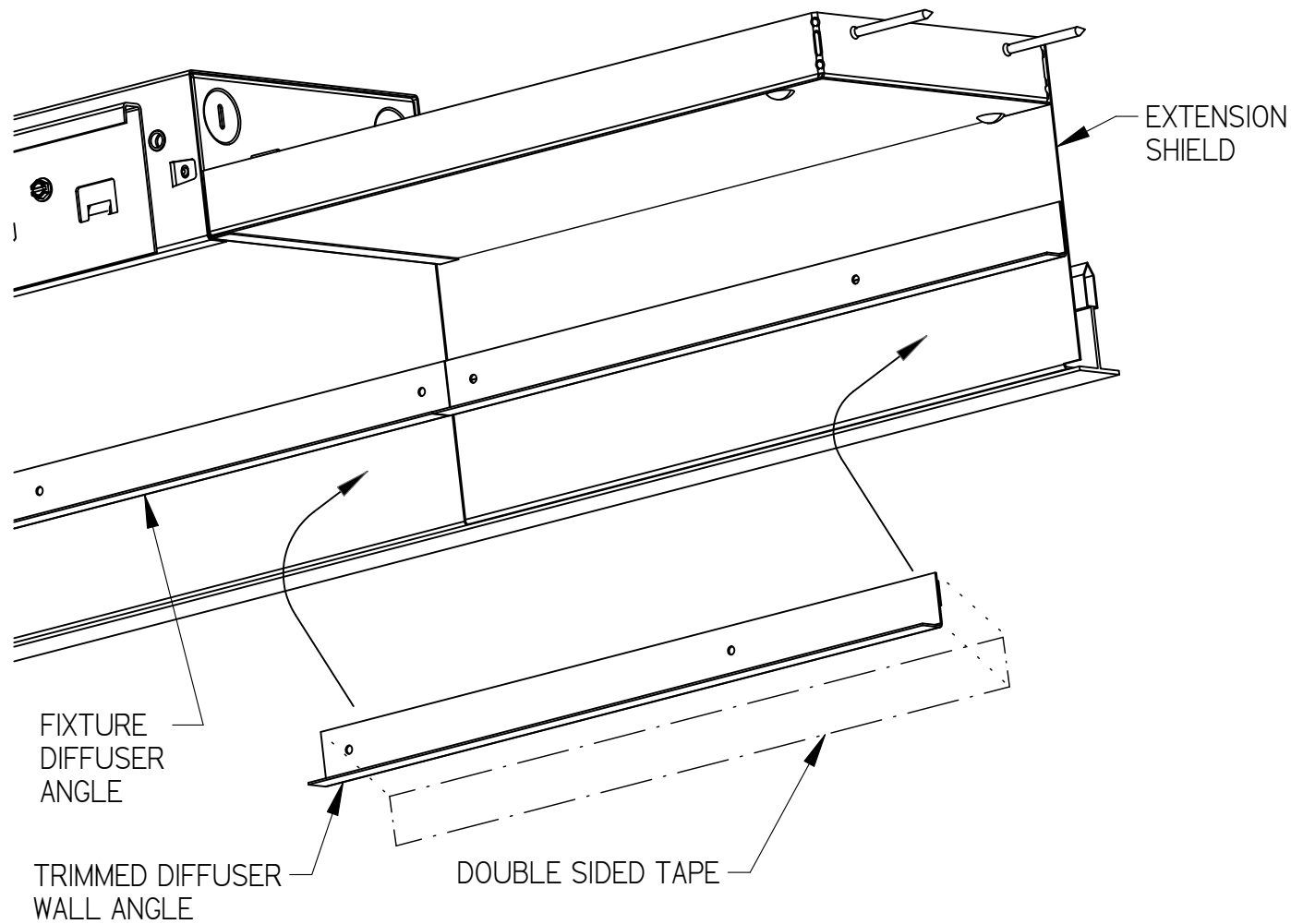
WALLSLOT 8400 SYSTEM CONNECTORS STRAIGHT EXTENSION [SE]

PG. 2 OF 6

P/C 510574-3000

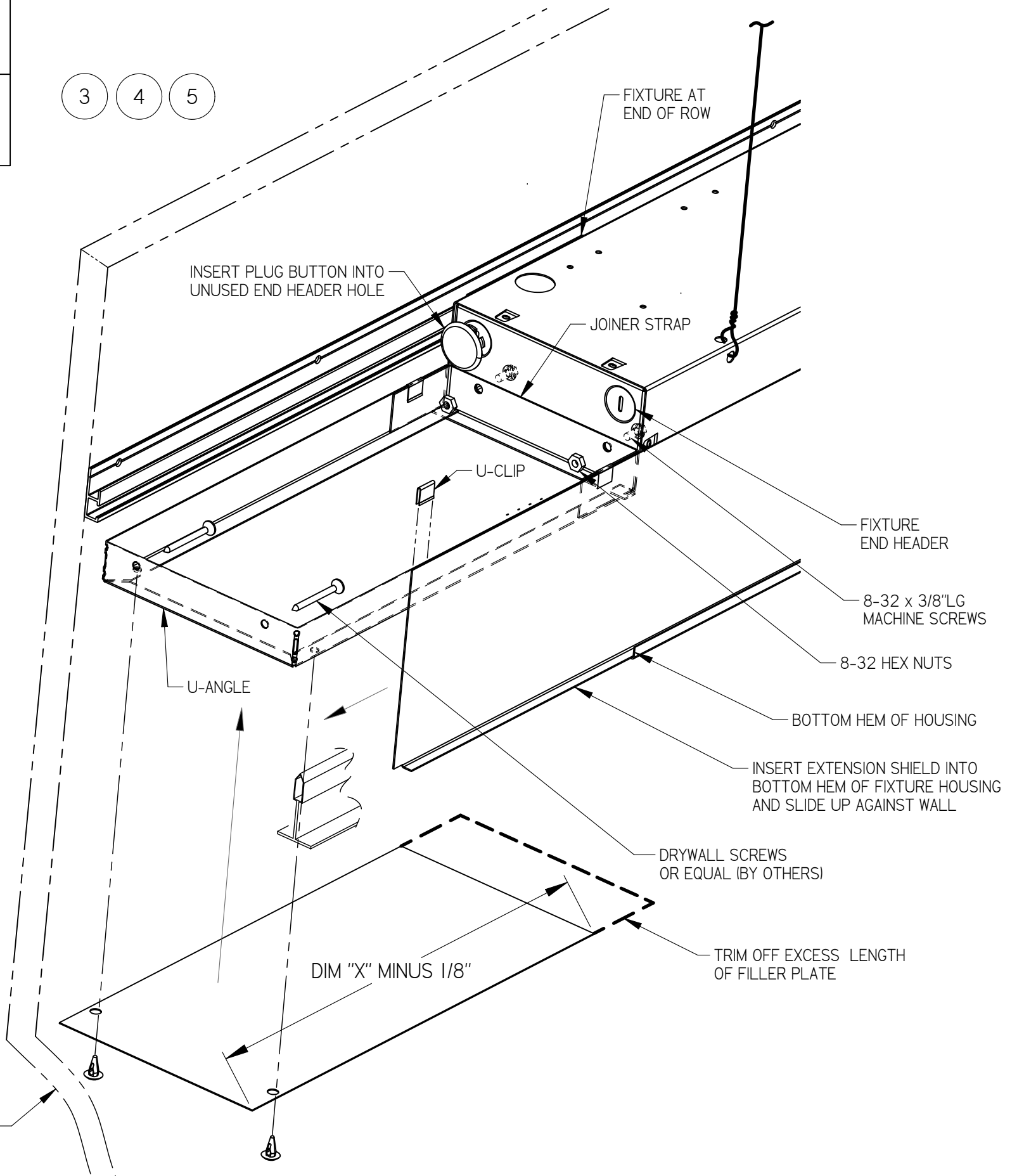
DO NOT MODIFY OR ALTER THIS PRODUCT IN ANY WAY, OR INSTALL IN ANY FASHION WHICH IS CONTRARY TO THE INSTRUCTIONS CONTAINED HEREIN. IF YOU HAVE ANY QUESTIONS REGARDING THIS PRODUCT OR THE INSTALLATION OF IT, PLEASE CALL LITECONTROL ENGINEERING AT 781-294-0100.

6



**ATTACHMENT OF WALL ANGLE TO EXTENSION SHIELDS FOR "R" POSITION DIFFUSERS ONLY**

3 4 5



**INSTALLATION INSTRUCTIONS**

FIXTURE TYPE \_\_\_\_\_

**WALLSLOT 8400 SYSTEM CONNECTORS 90 IC/OC AND 135 AIC/AOC**

PG. 3 OF 6

P/C **510574-3000**

DO NOT MODIFY OR ALTER THIS PRODUCT IN ANY WAY, OR INSTALL IN ANY FASHION WHICH IS CONTRARY TO THE INSTRUCTIONS CONTAINED HEREIN. IF YOU HAVE ANY QUESTIONS REGARDING THIS PRODUCT OR THE INSTALLATION OF IT, PLEASE CALL LITECONTROL ENGINEERING AT 781-294-0100.

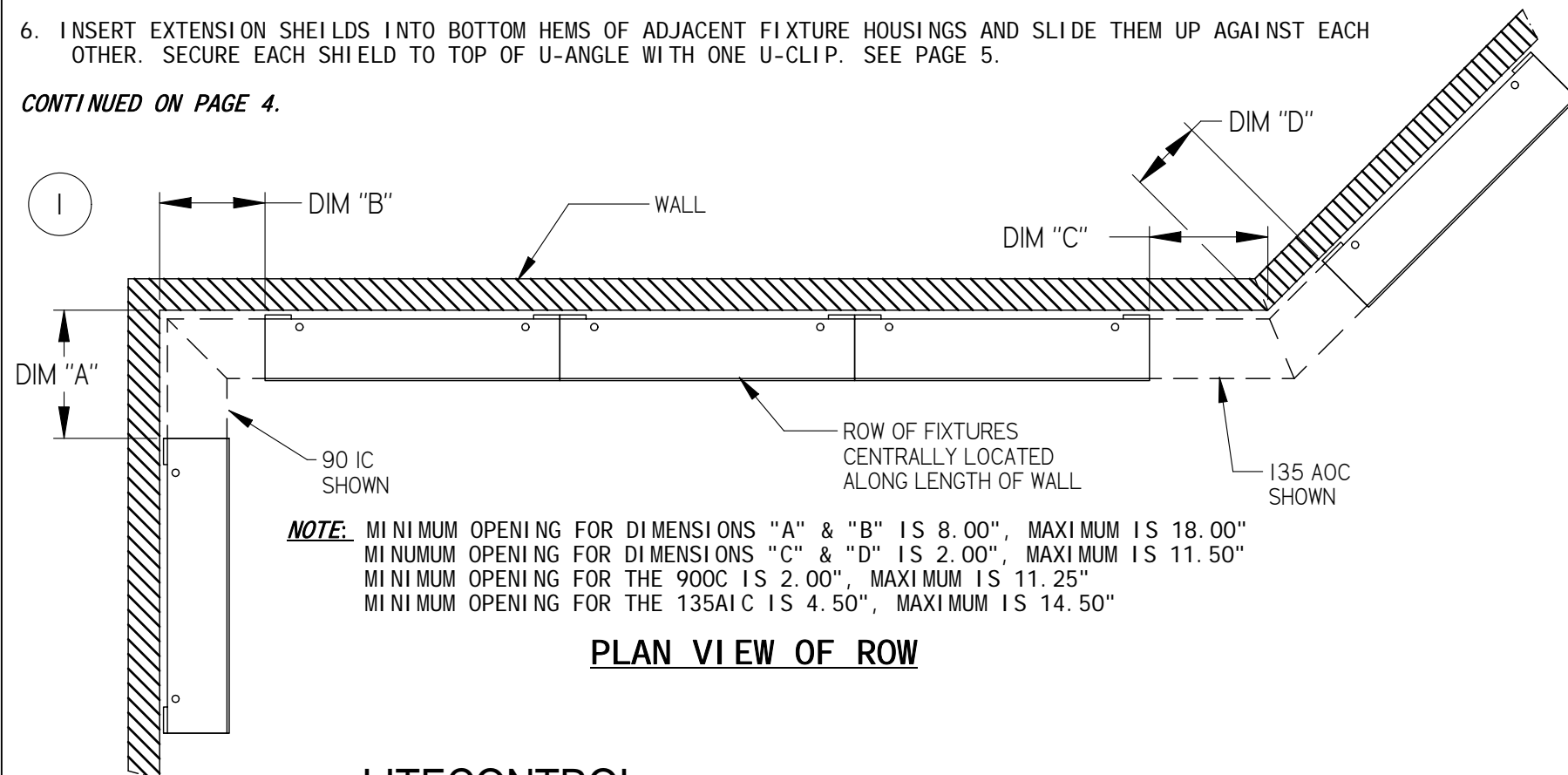
**NOTES: INSIDE (IC, AIC) AND OUTSIDE (OC, AOC) CORNERS ARE INSTALLED AT ENDS OF ROW TO CLOSE OFF CEILING OPENING.**

- A. FIXTURES MUST BE INSTALLED PRIOR TO ATTACHING CORNERS.
- B. CORNER KITS ARE SHIPPED SEPARATELY AND BULK PACKAGED.
- C. INSTALLATION OF CORNER KITS ARE SIMILAR REGARDLESS OF THE ANGLE OF CORNER.

**INSTRUCTIONS:**

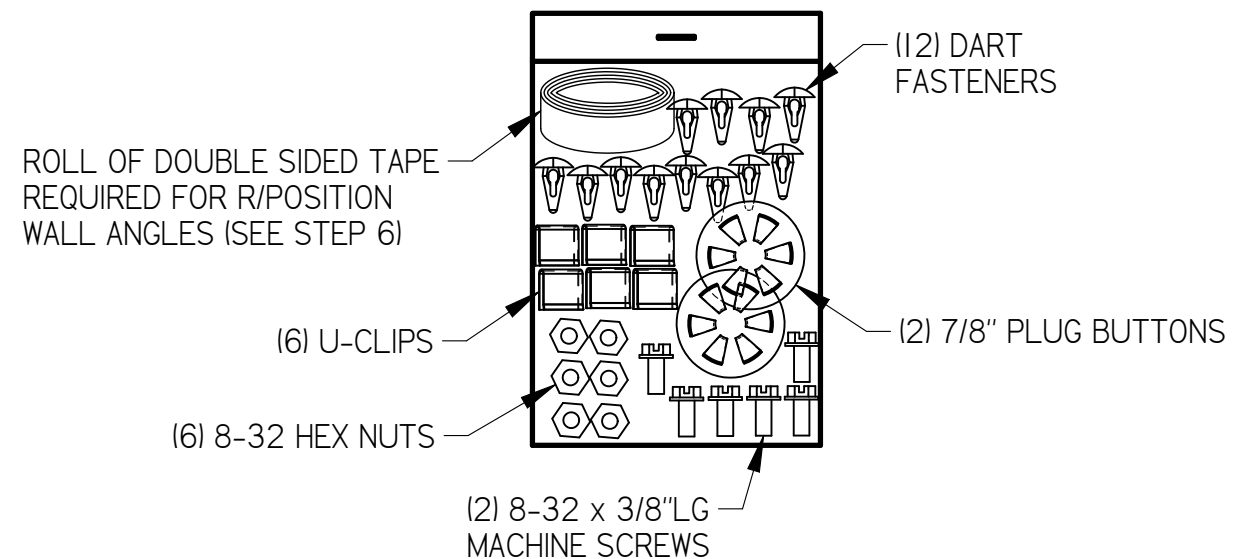
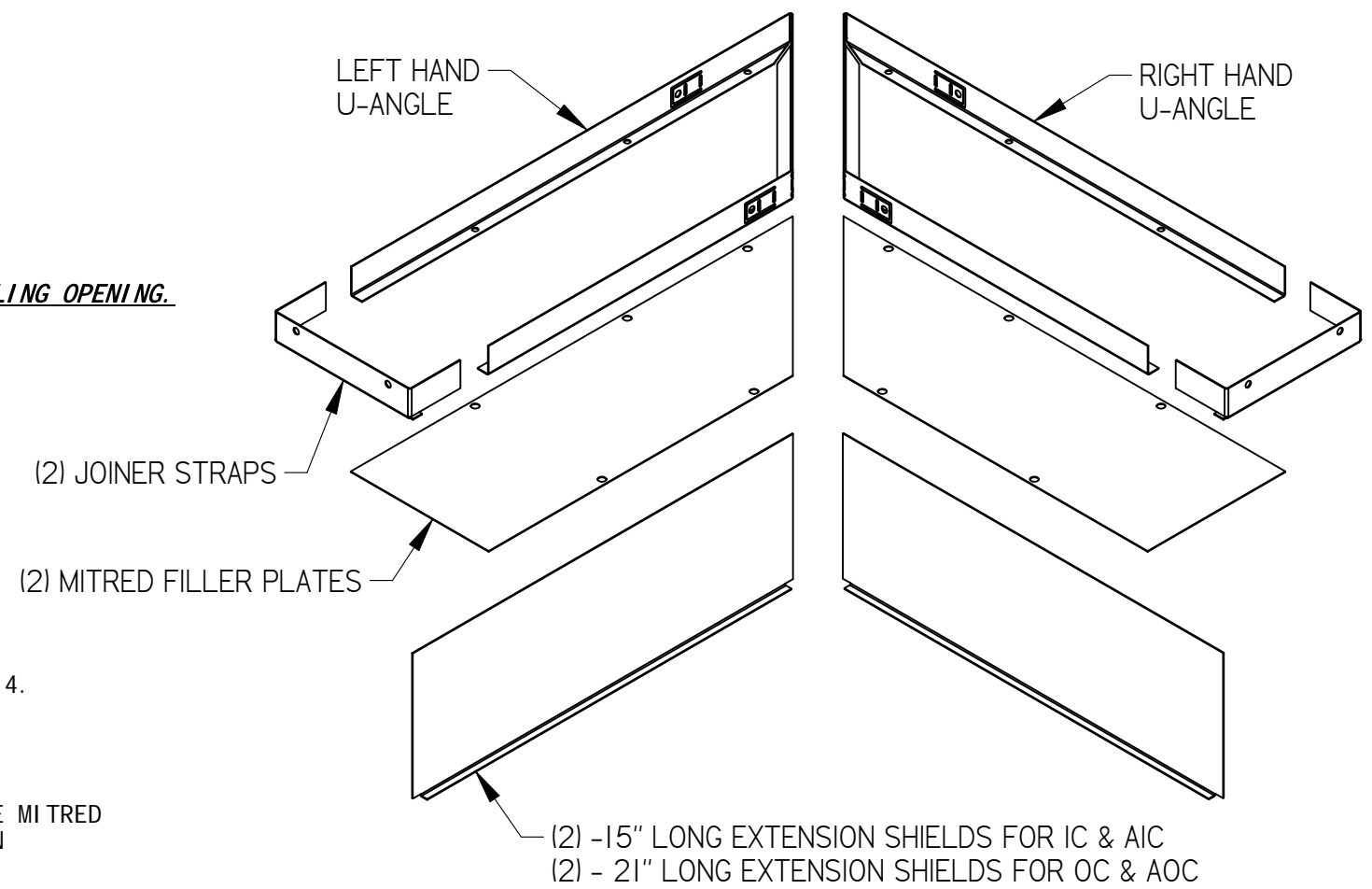
1. WITH FIXTURES CENTRALLY POSITIONED IN ROW, MEASURE THE DISTANCES FROM END OF FIXTURE TO ADJACENT WALL SURFACE SHOWN IN PLAN VIEW AS DIM "A" AND "B" OR "C" AND "D".
2. SAWCUT ENDS OF LEFT HAND AND RIGHT HAND MITRED U-ANGLES TO LENGTHS SHOWN ON PAGE 4. TRIM OFF THE SAME AMOUNT ON THE ENDS OF THE MITRED FILLER PLATES AS SHOWN ON PAGE 5.
3. INSERT JOINER STRAP INTO ENDS OF EACH TRIMMED U-ANGLE AND SECURE WITH (2) U-CLIPS AS SHOWN ON PAGE 4.
4. HAND BEND Z-TAB SUPPORTS IN EACH U-ANGLE OUTWARD TO WALL AS SHOWN ON PAGE 4.
5. LIFT EACH HAND OF OF THE JOINER STRAP/U-ANGLE ASSEMBLY INTO CEILING OPENING AND SECURE TO ADJACENT FIXTURE END HEADERS WITH (2) 8-32 x 3/8" LONG SCREWS AND NUTS. ATTACH EACH U-ANGLE TOGETHER AT THE MITRED JOINT WITH (2) MORE 8-32 x 3/8" LONG SCREWS AND NUTS. MAKING SURE THAT THE U-ANGLES ARE LEVEL THEN INSTALL DRYWALL SCREW OR ANCHOR (BY OTHERS) TO SUPPORT U-ANGLES NEAR MITRED ENDS. INSERT PLUG BUTTON INTO EACH OPEN 7/8" HOLE IN END HEADERS. SEE PAGE 5.
6. INSERT EXTENSION SHEILDS INTO BOTTOM HEMS OF ADJACENT FIXTURE HOUSINGS AND SLIDE THEM UP AGAINST EACH OTHER. SECURE EACH SHIELD TO TOP OF U-ANGLE WITH ONE U-CLIP. SEE PAGE 5.

CONTINUED ON PAGE 4.



**NOTE:** MINIMUM OPENING FOR DIMENSIONS "A" & "B" IS 8.00", MAXIMUM IS 18.00"  
 MINIMUM OPENING FOR DIMENSIONS "C" & "D" IS 2.00", MAXIMUM IS 11.50"  
 MINIMUM OPENING FOR THE 90OC IS 2.00", MAXIMUM IS 11.25"  
 MINIMUM OPENING FOR THE 135AIC IS 4.50", MAXIMUM IS 14.50"

**PLAN VIEW OF ROW**



**POLYBAG KIT**

**ITEMS SUPPLIED PER EACH CORNER KIT**

INSTALLATION  
INSTRUCTIONS

FIXTURE TYPE \_\_\_\_\_

**WALLSLOT 8400  
SYSTEM CONNECTORS  
90 IC/OC AND 135 AIC/AOC**

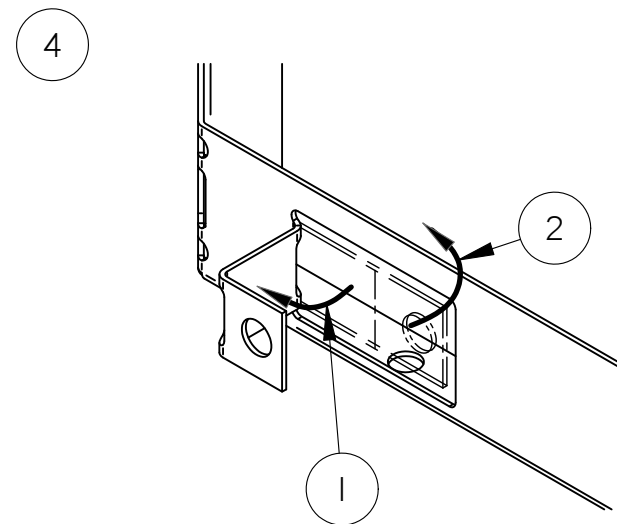
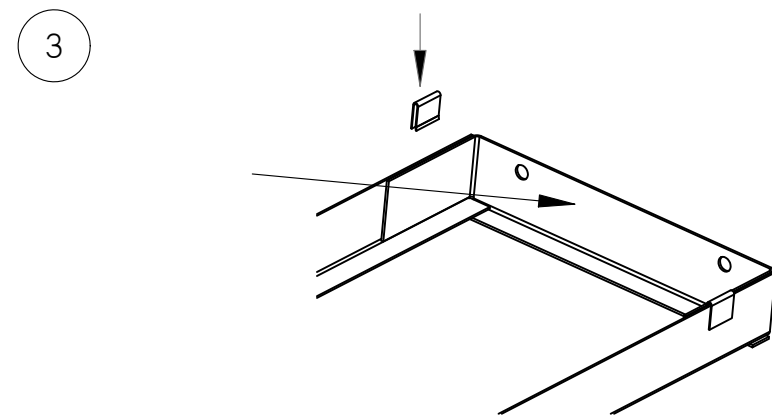
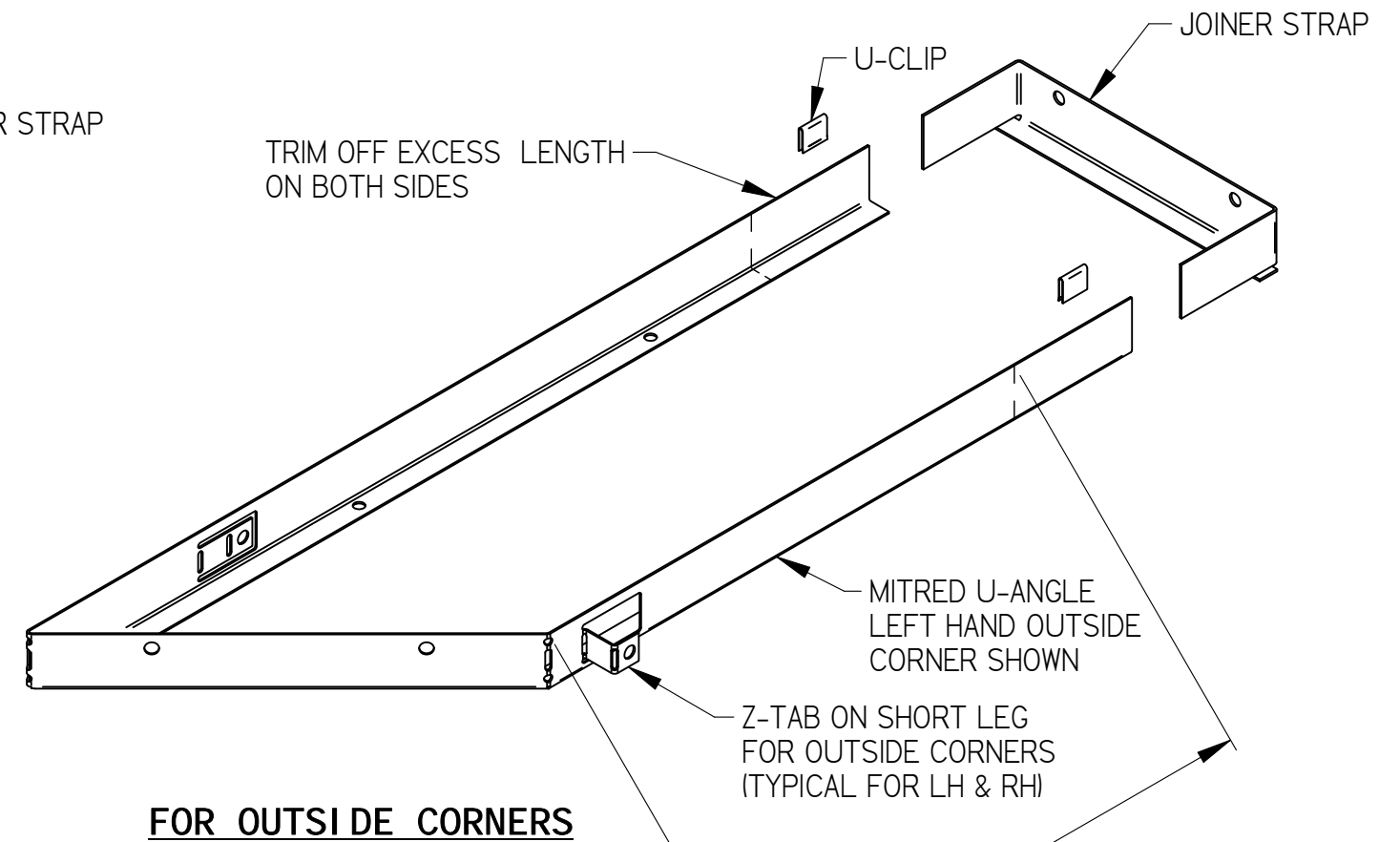
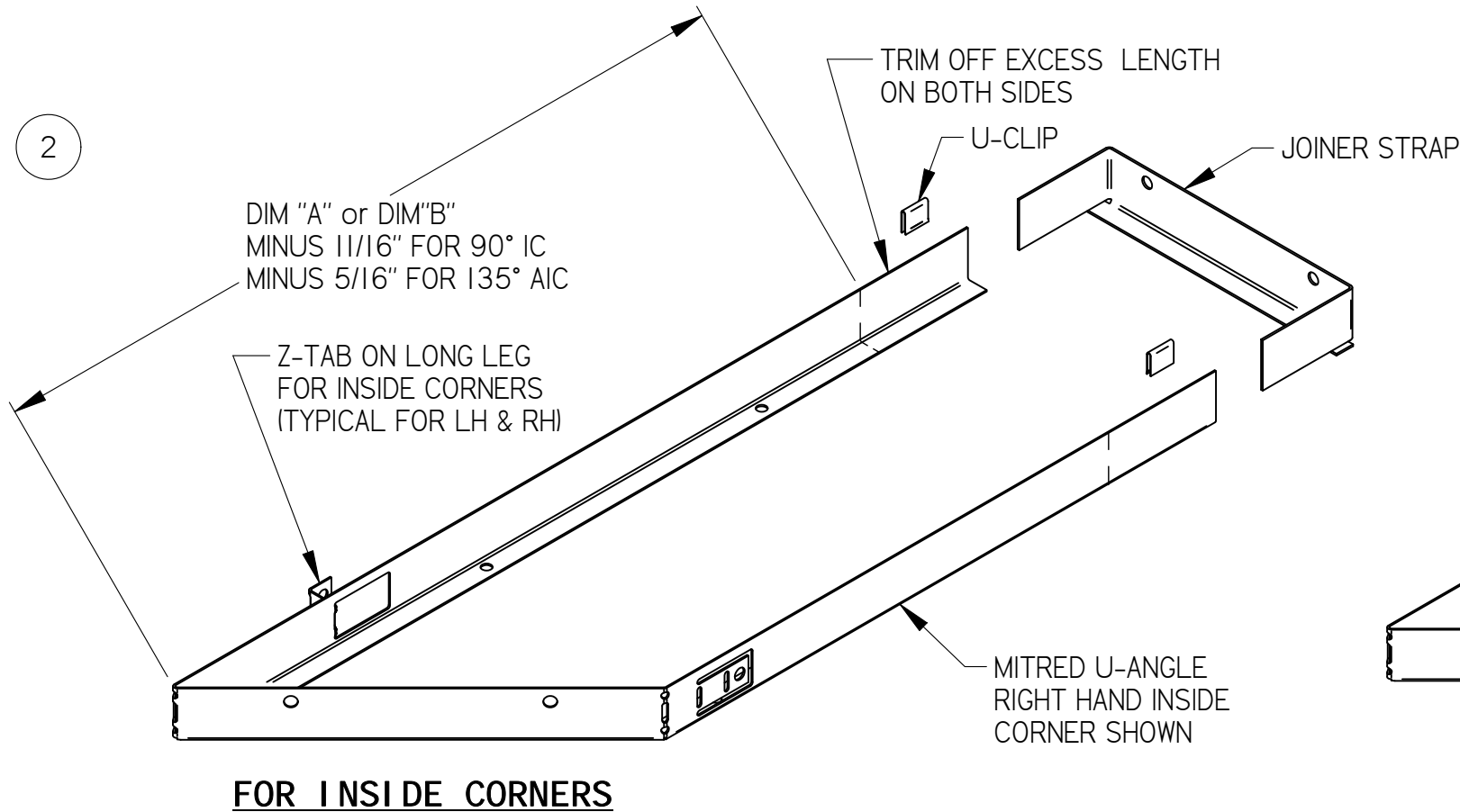
PG. 4 OF 6

P/C 510574-3000

DO NOT MODIFY OR ALTER THIS PRODUCT IN ANY WAY, OR INSTALL IN ANY FASHION WHICH IS CONTRARY TO THE INSTRUCTIONS CONTAINED HEREIN.  
IF YOU HAVE ANY QUESTIONS REGARDING THIS PRODUCT OR THE INSTALLATION OF IT, PLEASE CALL LITECONTROL ENGINEERING AT 781-294-0100.

INSTRUCTIONS CONTINUED:

7. TUCK THE TRIMMED EDGE OF THE FILLER PLATES INTO BOTTOM FLANGE OF THE JOINER STRAPS AND SECURE TO BOTTOM OF U-ANGLE WITH NYLON DART FASTENERS.
8. FOR R POSITION DIFFUSERS, TRIM EXTRA PIECES OF DIFFUSER WALL ANGLE TO SUIT EXTENDED LENGTH OF EACH SHIELD AND APPLY DOUBLE SIDED TAPE TO BACK SURFACE. PRESS WALL ANGLE ONTO EXTENSION SHIELDS IN LINE WITH DIFFUSER ANGLE OF FIXTURE. SEE STEP 6 ON PAGE 2.
9. "R" POSITION LENSES ARE SHIPPED SEPARATELY AND SUPPLIED IN (2) 24" LONG MITRED PIECES PER CORNER. THESE LENSES ARE SAWCUT TO FIT REMAINING OPENING AFTER THE 96" LENGTH FIXTURE LENSES ARE INSTALLED.



**INSTALLATION  
INSTRUCTIONS**

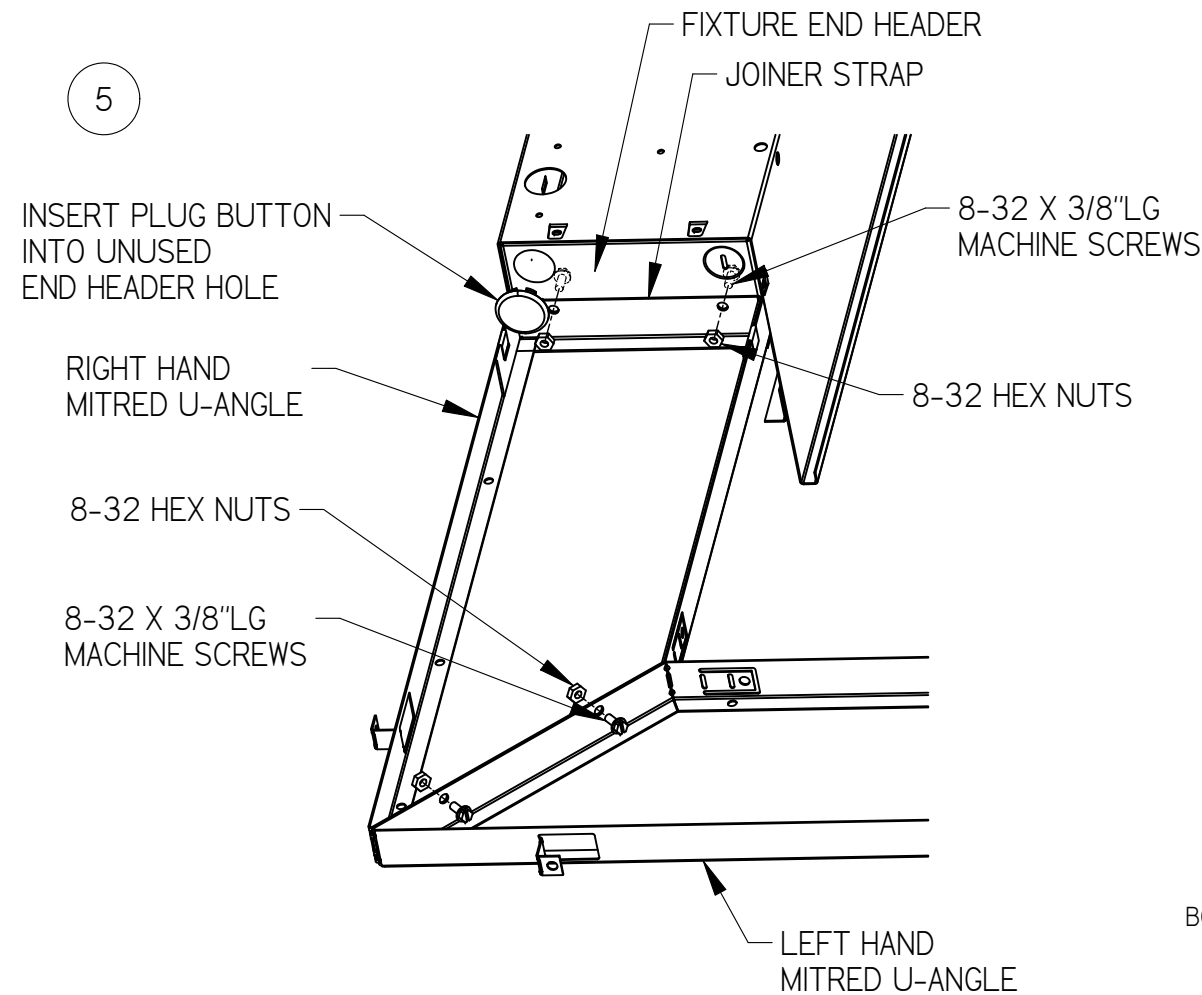
P/C **510574-3000**

FIXTURE TYPE \_\_\_\_\_

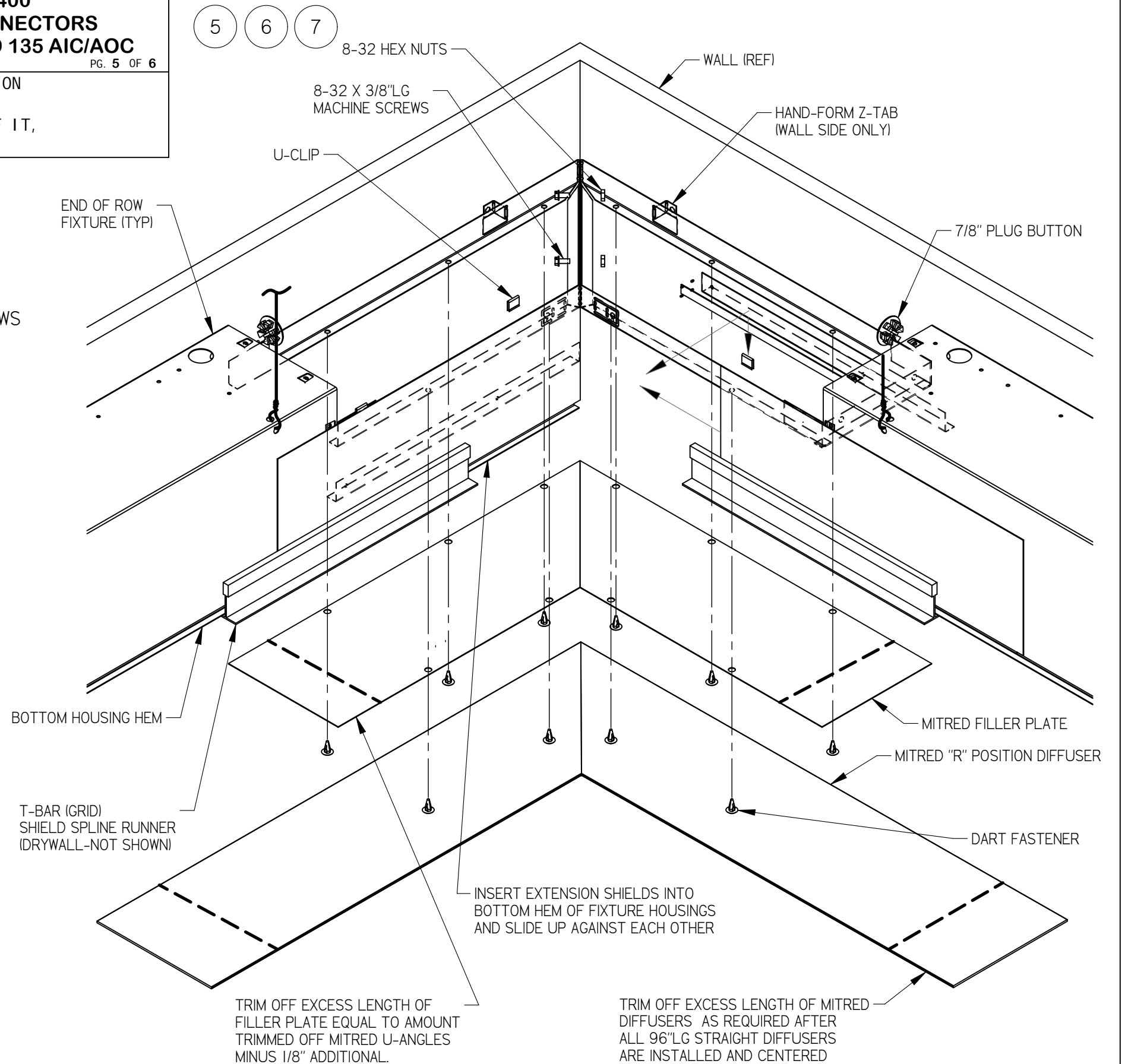
**WALLSLOT 8400  
SYSTEM CONNECTORS  
90 IC/OC AND 135 AIC/AOC**

PG. 5 OF 6

DO NOT MODIFY OR ALTER THIS PRODUCT IN ANY WAY, OR INSTALL IN ANY FASHION WHICH IS CONTRARY TO THE INSTRUCTIONS CONTAINED HEREIN. IF YOU HAVE ANY QUESTIONS REGARDING THIS PRODUCT OR THE INSTALLATION OF IT, PLEASE CALL LITECONTROL ENGINEERING AT 781-294-0100.



**MITRED 90° IC JOINT ATTACHMENT**



TRIM OFF EXCESS LENGTH OF FILLER PLATE EQUAL TO AMOUNT TRIMMED OFF MITRED U-ANGLES MINUS 1/8\"

TRIM OFF EXCESS LENGTH OF MITRED DIFFUSERS AS REQUIRED AFTER ALL 96\"

**90° IC INSTALLATION SHOWN**

**INSTALLATION  
INSTRUCTIONS**

FIXTURE TYPE \_\_\_\_\_

**WALLSLOT 8400  
SYSTEM CONNECTORS  
PLENUM END CAP**

PG. 6 OF 6

P/C **510574-3000**

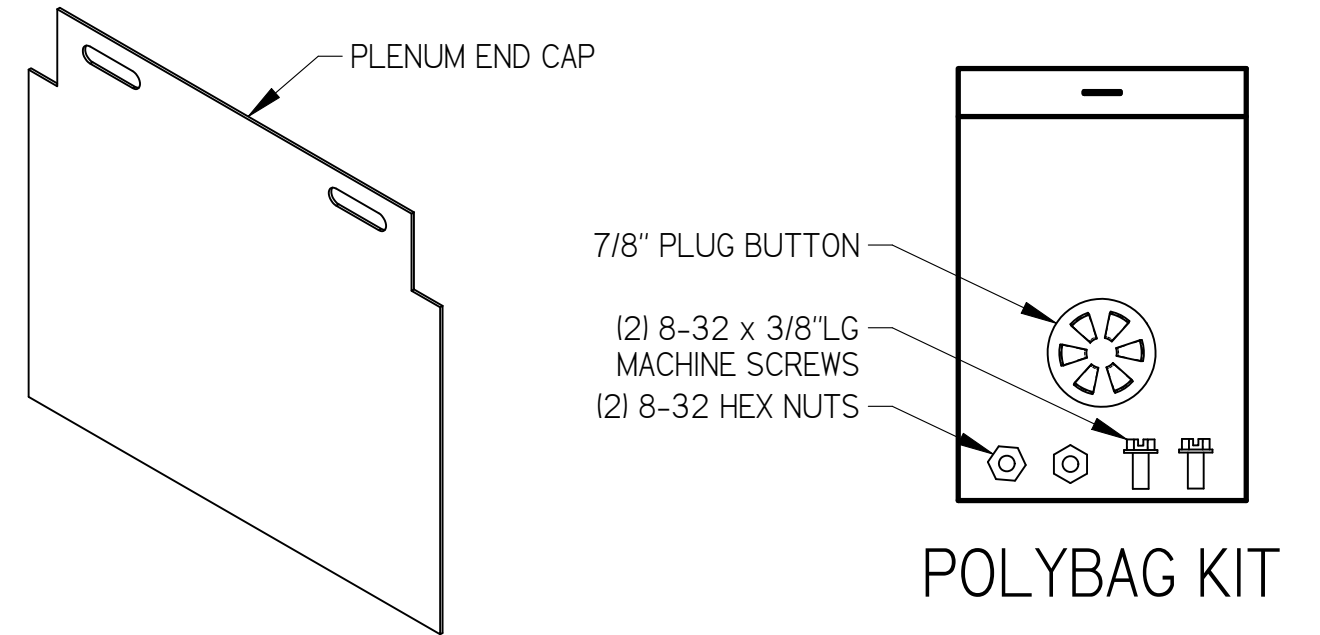
DO NOT MODIFY OR ALTER THIS PRODUCT IN ANY WAY, OR INSTALL IN ANY FASHION WHICH IS CONTRARY TO THE INSTRUCTIONS CONTAINED HEREIN.  
IF YOU HAVE ANY QUESTIONS REGARDING THIS PRODUCT OR THE INSTALLATION OF IT, PLEASE CALL LITECONTROL ENGINEERING AT 781-294-0100.

**NOTES:** PLENUM END CAPS (EC) ARE INSTALLED AT ENDS OF ROW TO CLOSE OFF PLENUM OPENING WHEN CORNERS OR STRAIGHT EXTENSIONS ARE NOT USED.  
CEILING TILES OR DRYWALL IS REQUIRED TO FINISH OFF OPENING BEHIND END CAPS.

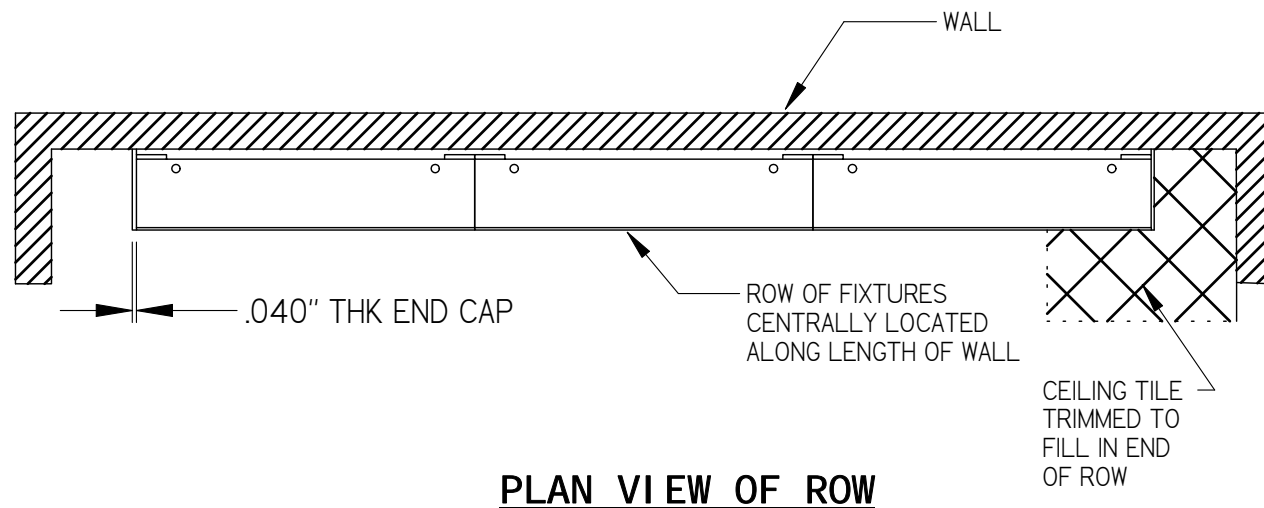
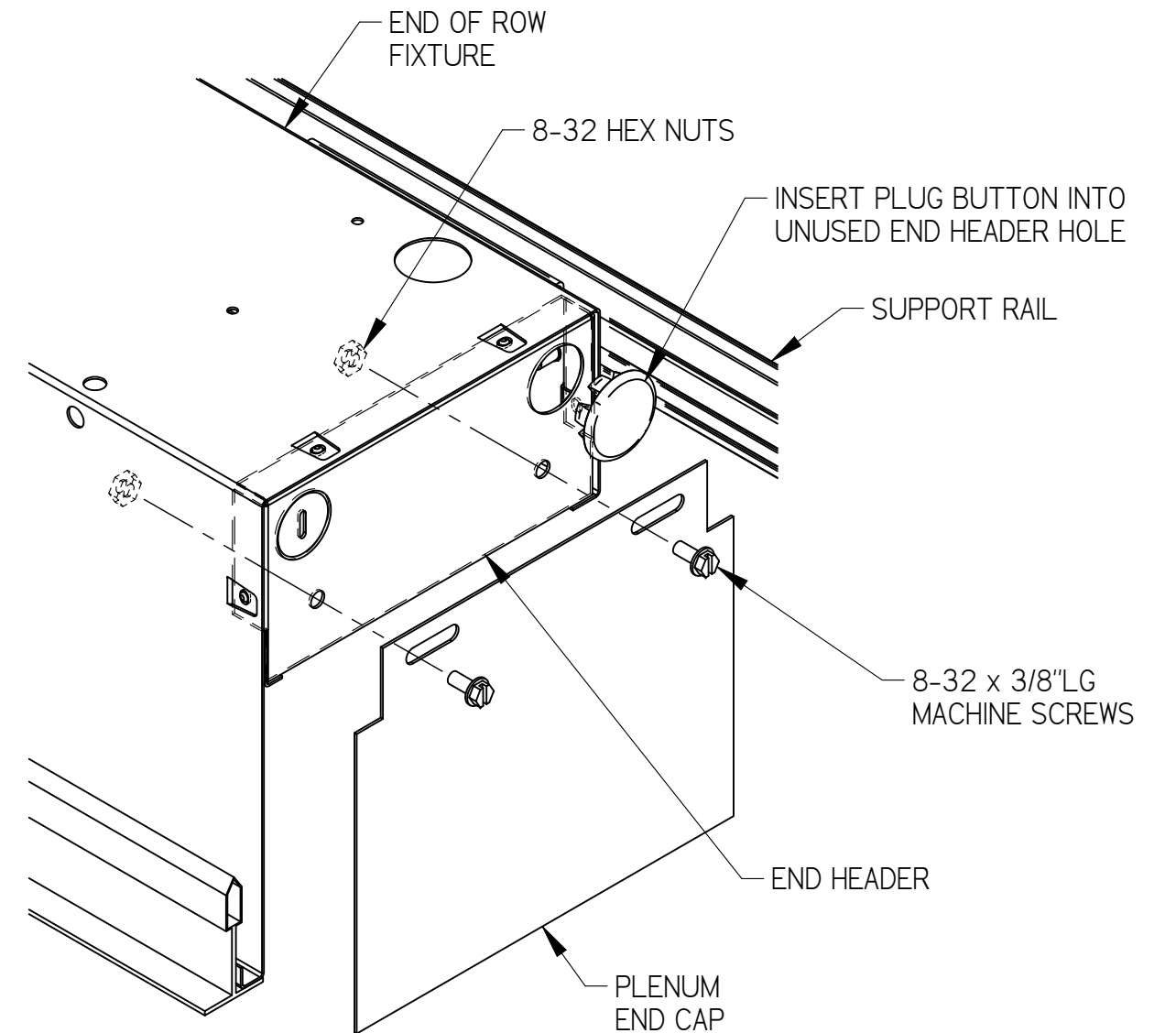
- A. FIXTURES MUST BE INSTALLED PRIOR TO ATTACHING PLENUM END CAPS.
- B. END CAPS ARE SHIPPED SEPARATELY AND BULK PACKAGED.

**INSTRUCTIONS:**

1. WITH FIXTURES CENTRALLY POSITIONED IN ROW, ATTACH PLENUM END CAP TO THE END OF ROW FIXTURE END HEADER WITH (2) 8-32 x 3/8" LONG MACHINE SCREWS AND NUTS.
2. INSERT PLUG BUTTON INTO OPEN 7/8" HOLE IN END HEADER.



**ITEMS SUPPLIED PER EACH END CAP KIT**



**PLAN VIEW OF ROW**

**LITECONTROL**

100 HAWKS AVENUE - HANSON MA 02341, (781-294-0100) litecontrol.com