

INSTALLATION INSTRUCTIONS

**W-D & W-I-0200
FIXTURE ASSEMBLY**

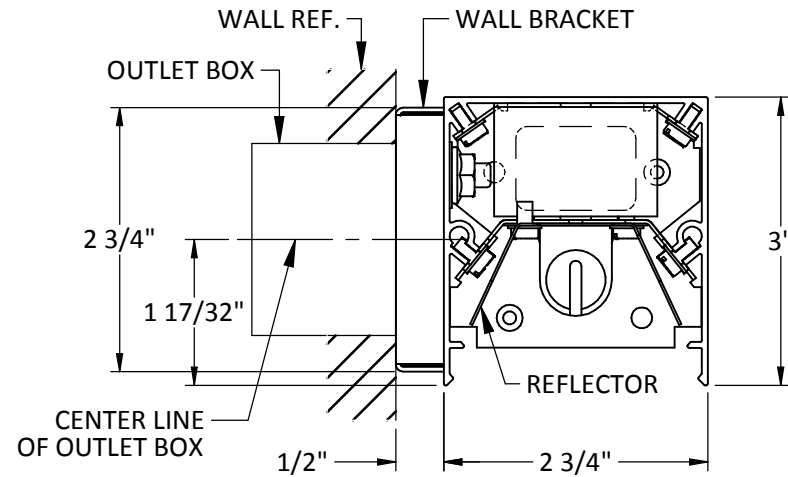
P/C **510611-0000**

DATE: 06/10/2013

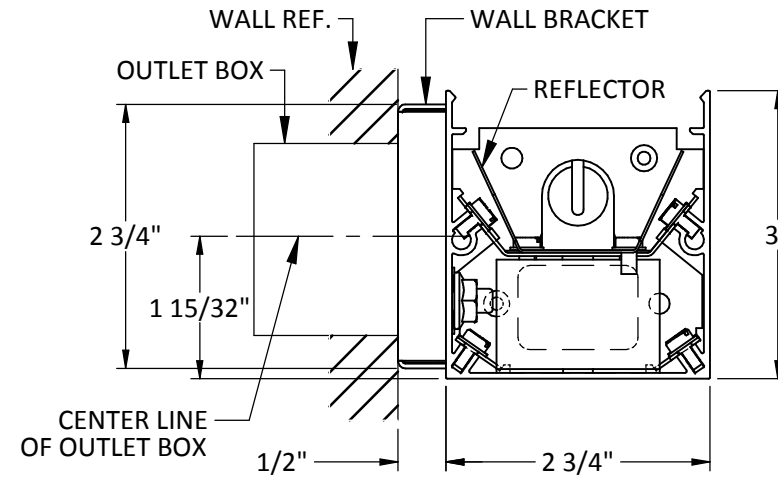
PG. 1 OF 2

DO NOT MODIFY OR ALTER THIS PRODUCT IN ANY WAY, OR INSTALL IN ANY FASHION WHICH IS CONTRARY TO THE INSTRUCTIONS CONTAINED HEREIN. IF YOU HAVE ANY QUESTIONS REGARDING THIS PRODUCT OR THE INSTALLATION OF IT, PLEASE CALL LITECONTROL ENGINEERING AT 781-294-0100.

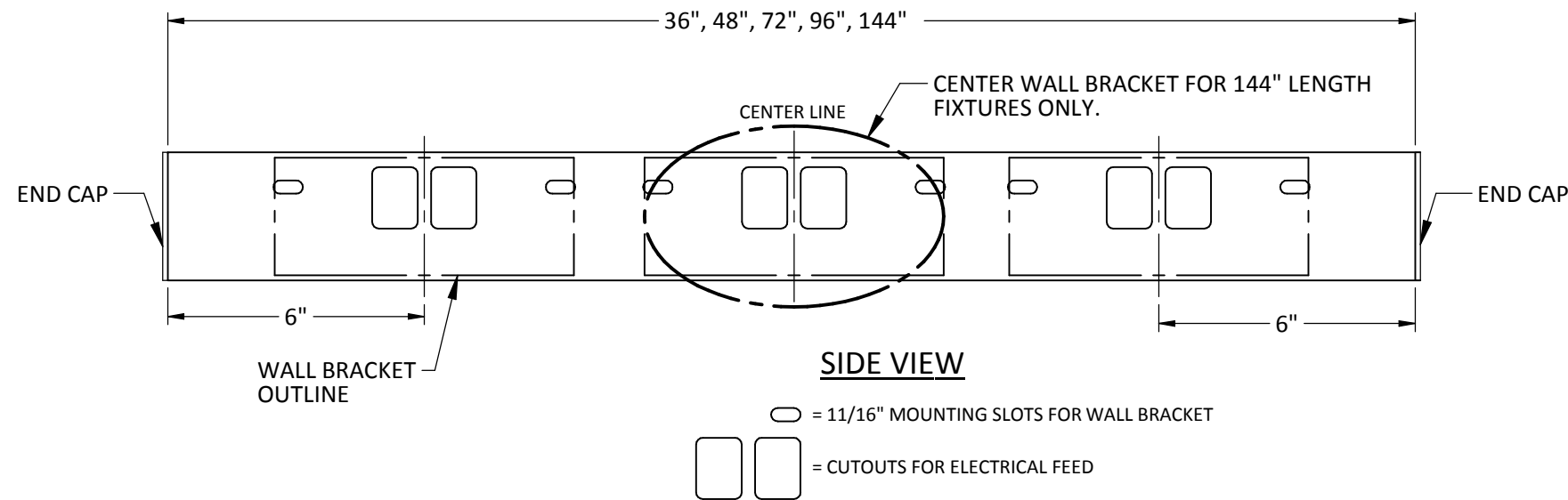
FIXTURE TYPE _____



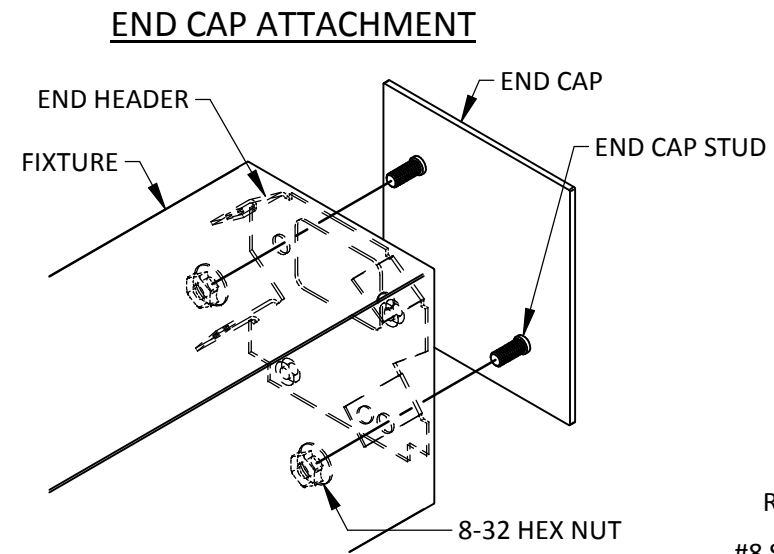
**CROSS SECTION
W-D-0200**



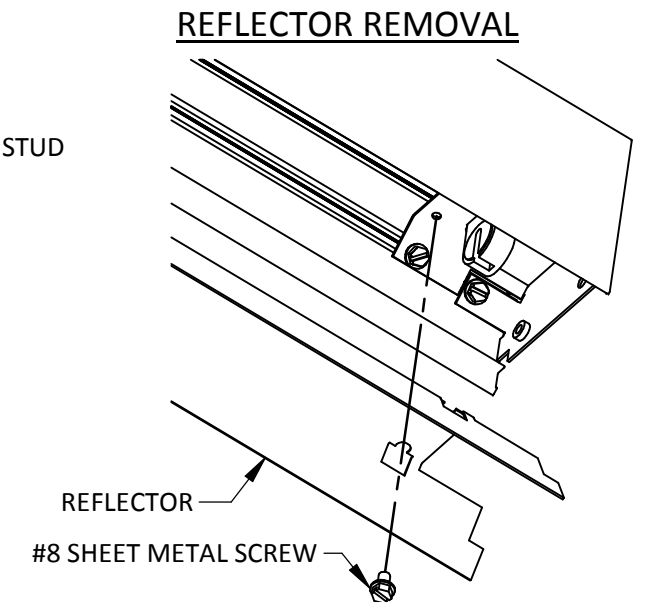
**CROSS SECTION
W-I-0200**



SIDE VIEW



END CAP ATTACHMENT



REFLECTOR REMOVAL

General Notes:

Read sheets completely before beginning installation.

1. Leave protective wrapping material on fixture until fixtures are mounted- this will protect finish from damage.
2. Fixtures are supplied with factory installed branch circuit wiring. Refer to supplemental instruction sheet for making connections.
3. Wall mounted fixtures are attached with wall brackets (shipped separately) over a finished wall surface. Two brackets are required for 36", 48", 72" & 96" length fixtures & three for 144" length fixtures. Approximate weight of fixture is 2.0 lbs per foot of length.

Instructions:

1. Remove reflector from fixture by loosening sheet metal screws & shifting it out through keyholes. See "Reflector Removal" detail.
2. Mounting Individual Fixtures:
 - A) Install end caps (shipped separately) to each end of fixture by inserting studs on end cap through holes in end headers & secure with #8-32 hex nuts. Before tightening nuts, position end caps so they are flush with sides of housing. See "End Cap Attachment" detail.
 - B) Locate & install wall brackets/fixtures per "Side View" detail & installation instruction sheet 510613 (shipped with brackets).
 - C) Go to step 4 on Page 2.

See Page 2 for mounting rows of fixtures.

INSTALLATION
INSTRUCTIONS

FIXTURE TYPE _____

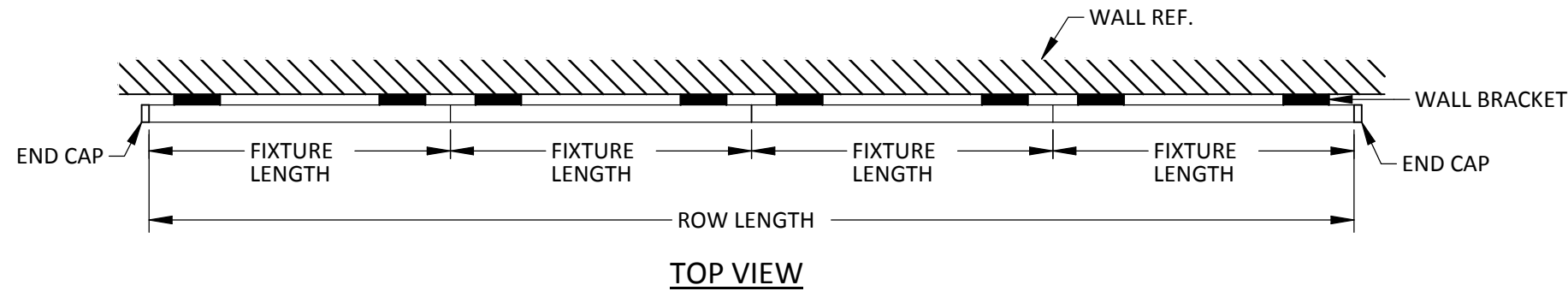
W-D & W-I-0200
FIXTURE ASSEMBLY

P/C 510611-0000

DATE: 06/10/2013

PG. 2 OF 2

DO NOT MODIFY OR ALTER THIS PRODUCT IN ANY WAY, OR INSTALL IN ANY FASHION WHICH IS CONTRARY TO THE INSTRUCTIONS CONTAINED HEREIN.
IF YOU HAVE ANY QUESTIONS REGARDING THIS PRODUCT OR THE INSTALLATION OF IT, PLEASE CALL LITECONTROL ENGINEERING AT 781-294-0100.



Continued from Page 1

3. Mounting Rows of Fixtures:

- A) Install end cap to one end of fixture per step 1A on page 1. See "Row Joint Assembly" detail.
- B) Locate & install wall brackets per step 2B and mount only the first fixture in the row then level.
- C) Lift & loosely bolt the next fixture in the row to its wall brackets. Secure fixture joint with 8-32 hex head machine screws. Branch circuit wires can be brought through rectangular cutout in end header at each row joint. See "Row Joint Assembly" detail.
- D) Repeat step 3C for each additional fixture in row. Level fixtures, align row joint seams & tighten all wall bracket nuts. End cap can be installed to last fixture in the row before mounting to its wall brackets.

4. Bring electrical feed into fixture wireway & make connections.

5. Replace reflectors.

6. Clean fixture exteriors with a general window cleaner & install lamps (by others) by inserting lamp pins into sockets & rotating lamp 90° to lock in place.

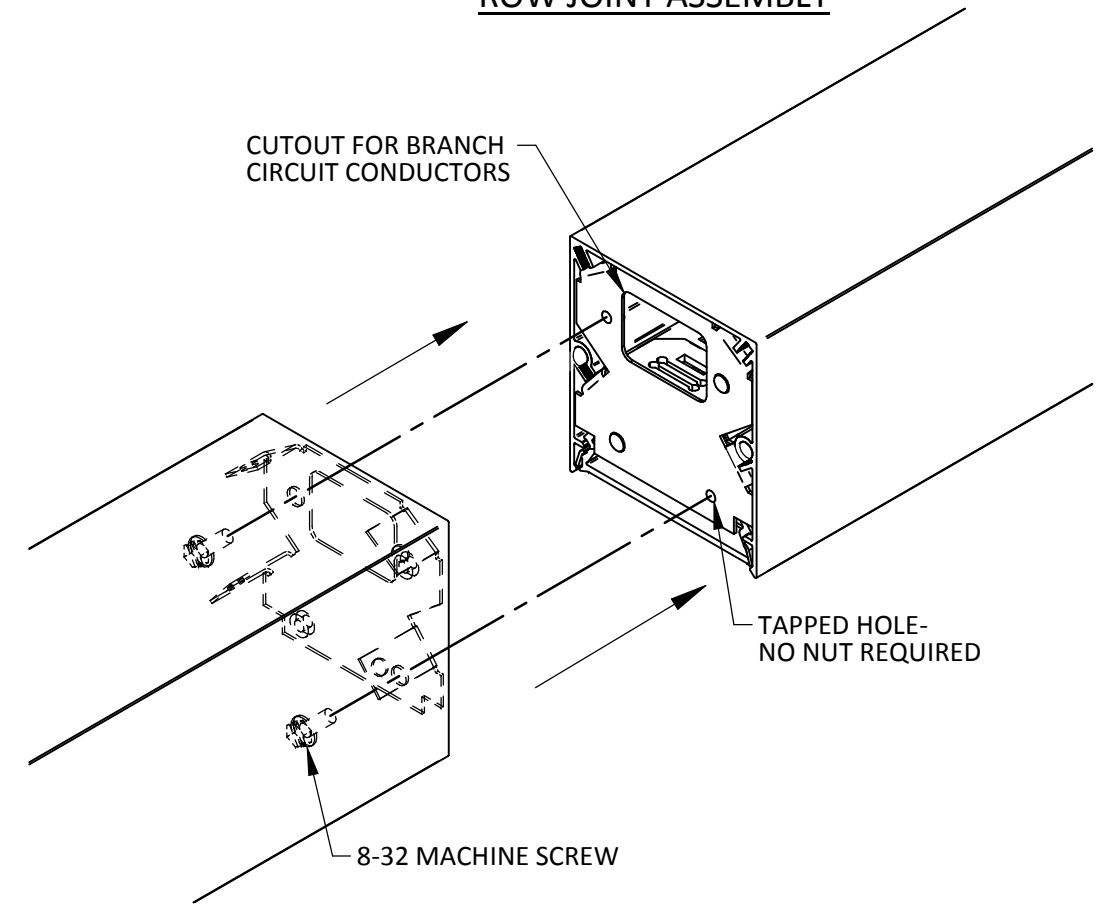
7. Diffuser Installation:

- A) Snap in BW baffle or SGL lens into housing opening. See "Diffuser Installation" detail.

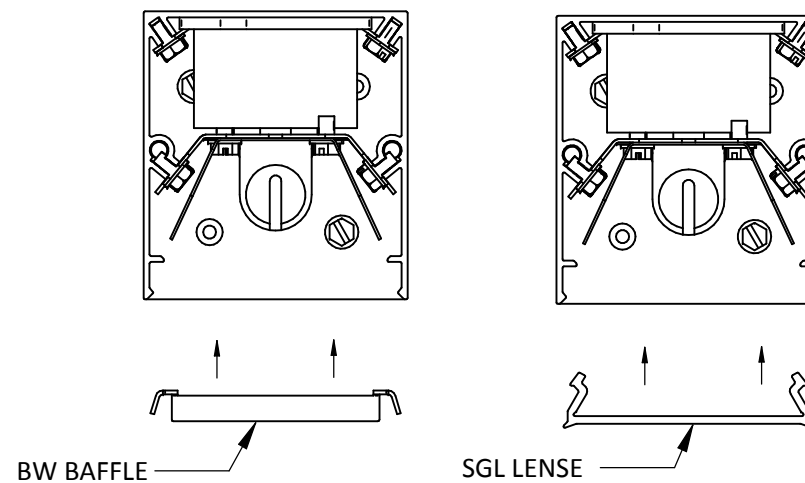
8. Diffuser Removal:

- A) To remove BW baffle- pull down from blades at center of baffle.
- B) To remove SGL lens- insert screwdriver or flat-head pry tool at end of lens & pull down. See "Lens Removal" detail.

ROW JOINT ASSEMBLY



DIFFUSER INSTALLATION



LENS REMOVAL

