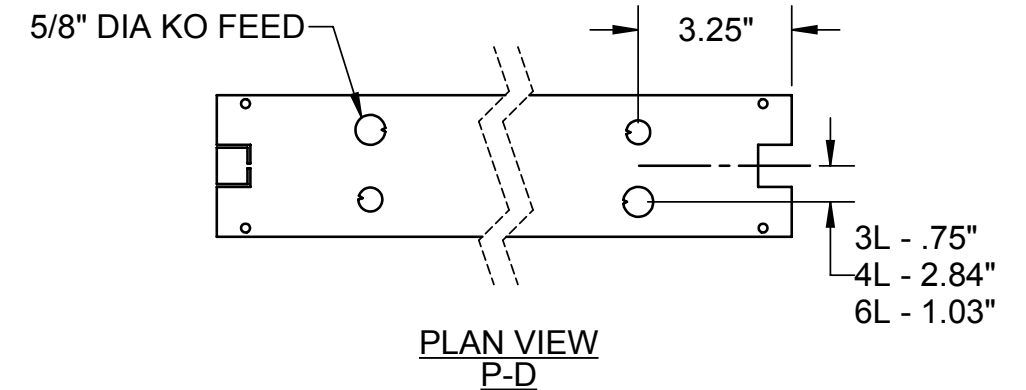
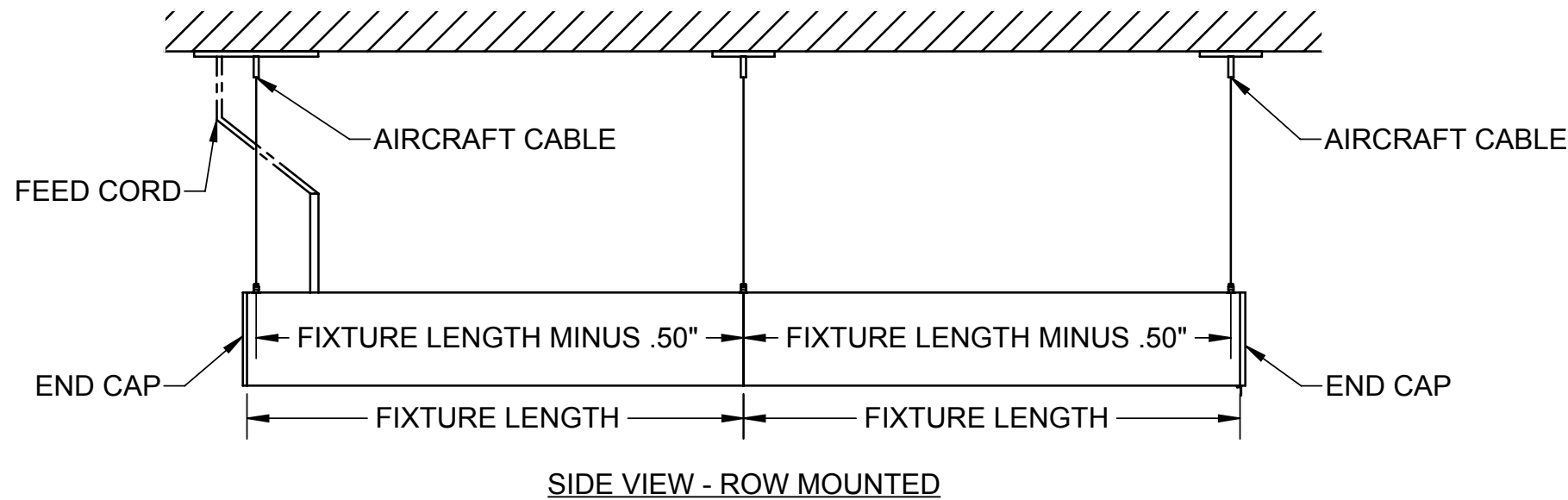


CROSS SECTION VIEW
P-D



PLAN VIEW
P-D

GENERAL NOTES: (READ SHEETS COMPLETELY BEFORE STARTING)

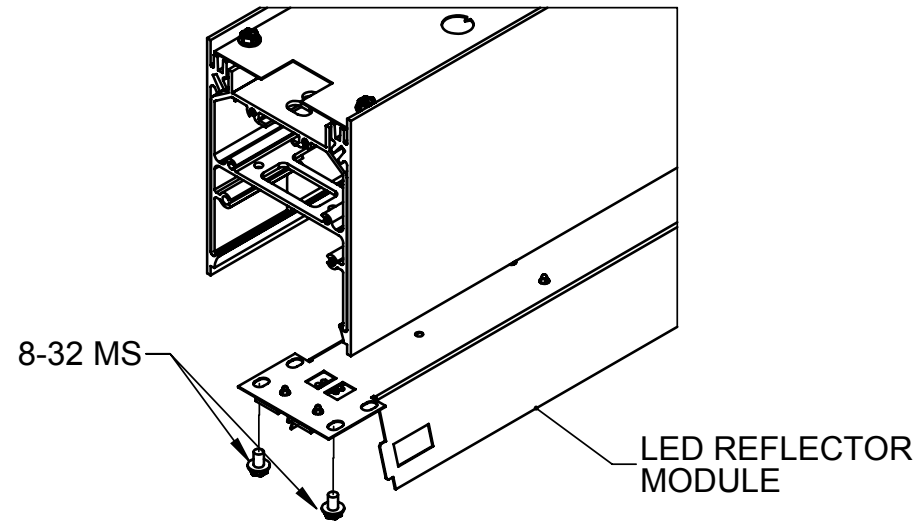
1. LEAVE PROTECTIVE WRAPPING MATERIAL ON FIXTURE(S) UNTIL START OF INSTALLATION TO PROTECT FINISH FROM DAMAGE.
2. FIXTURES ARE SUPPLIED WITH FACTORY-INSTALLED BRANCH CIRCUIT WIRING. REFER TO SUPPLEMENTAL INSTRUCTION SHEET WHEN MAKING CONNECTIONS.
3. APPROXIMATE WEIGHT OF FIXTURE IS 3.50 LBS PER FOOT OF LENGTH.

TOOLS REQUIRED

- SCREWDRIVER/DRILL

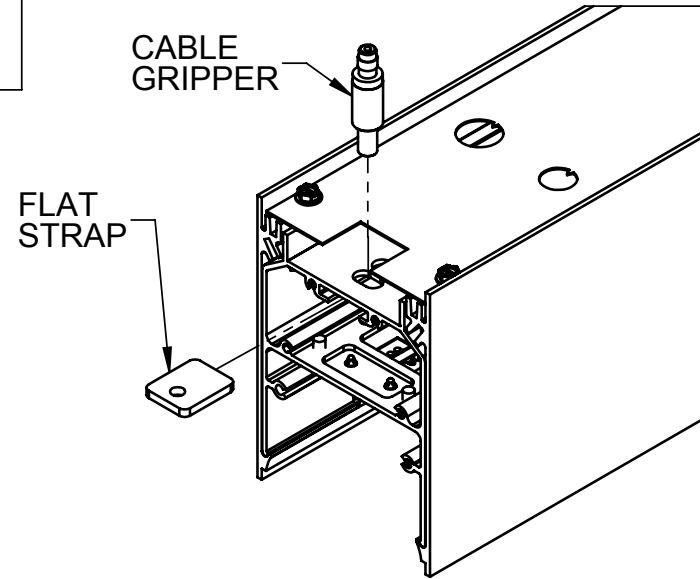
SUPPLIED BY INSTALLER

1 LOCATE FIXTURE DIMENSIONS ALONG STRAIGHT LINE ON THE CEILING. SEE SIDE VIEW ON PAGE 1.



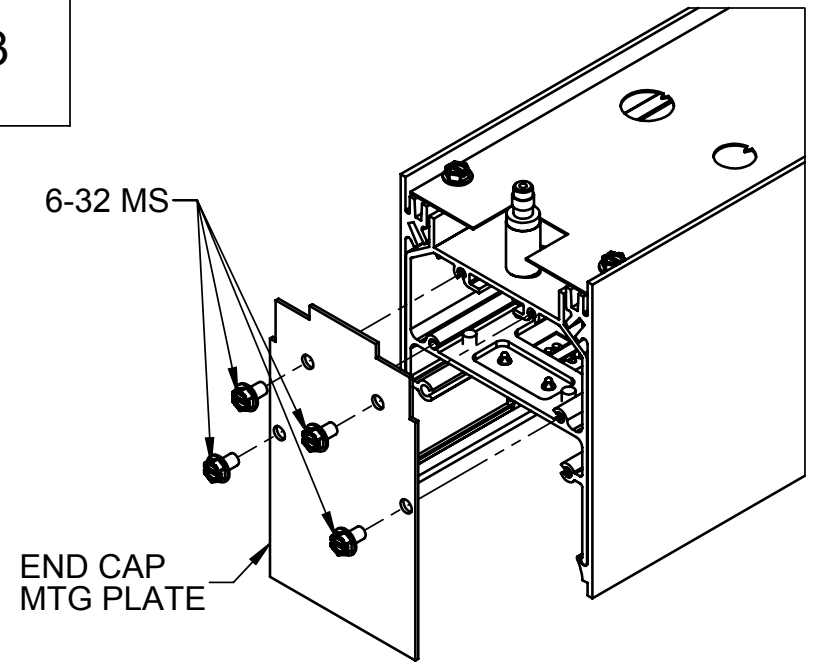
PEEL BACK FOAM WRAPPING AND DETACH LED REFLECTOR MODULES BY LOOSENING 8-32 MACHINE SCREWS AS ILLUSTRATED. SCREWS ARE RETAINED BY LOCKING NUTS AND CANNOT BE REMOVED.

2



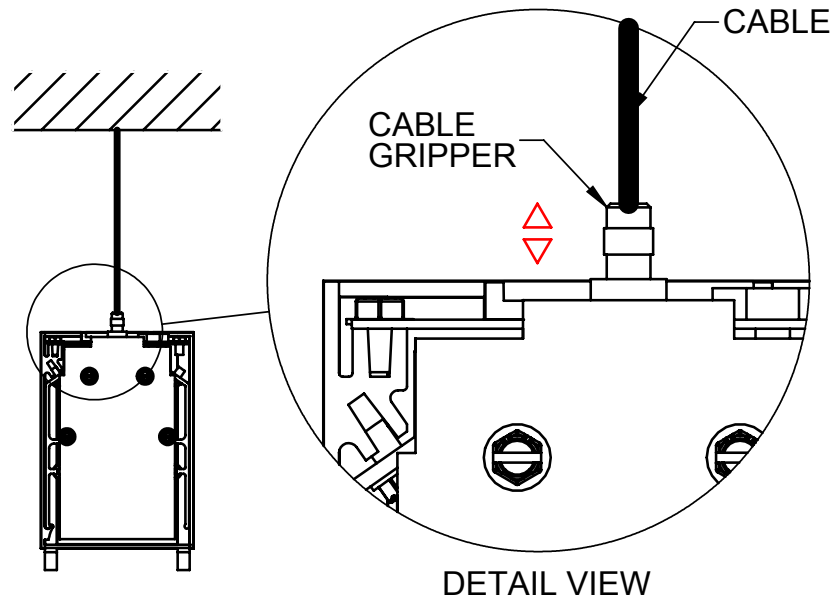
INSERT FLAT STRAP INTO 1ST FIXTURE AT CABLE LOCATION AND THREAD GRIPPER INTO STRAP. REPEAT AT OPPOSITE END OF FIXTURE. IF INSTALLING ROW, ATTACH CABLE ASSEMBLY WITH FLAT STRAP AT FAR END OF REMAINING FIXTURE(S). FLAT STRAP CANNOT BE PROTRUDING OUT ON THE EOR FIXTURES.

3



ATTACH END CAP MOUNTING PLATE (SHIPPED SEPARATELY) TO NEAR END OF 1ST FIXTURE WITH 6-32 MACHINE SCREWS PROVIDED. IF INSTALLING INDIVIDUAL FIXTURE, REPEAT FOR FAR END.

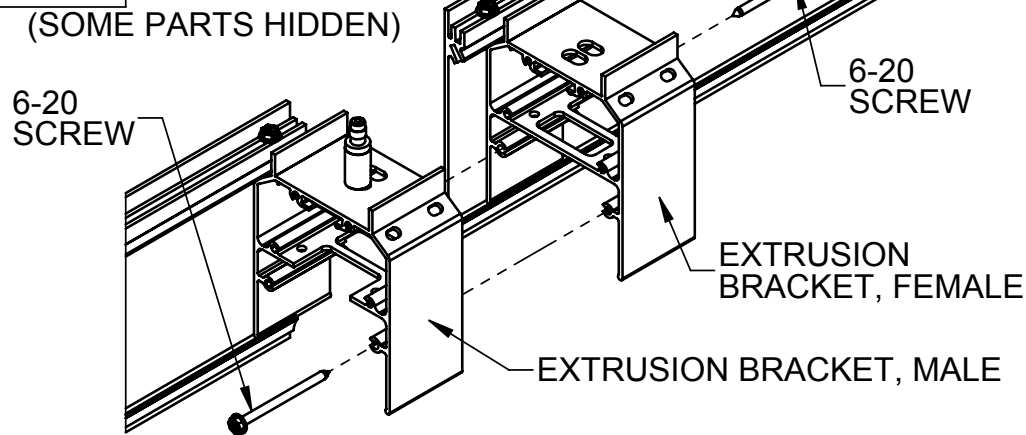
4



LIFT 1ST FIXTURE AND ATTACH CABLES TO CEILING. LEVEL FIXTURE BY ADJUSTING GRIPPER UP OR DOWN. REFER TO CABLE INSTRUCTION SHEET 510541.

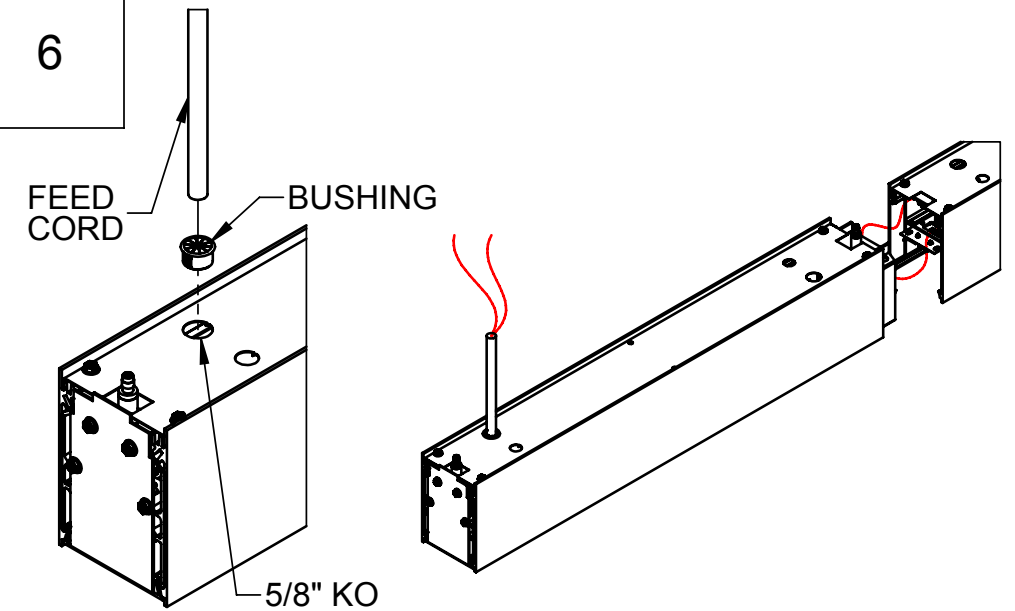
IF INSTALLING SINGLE FIXTURE, SKIP TO STEP 6.

5



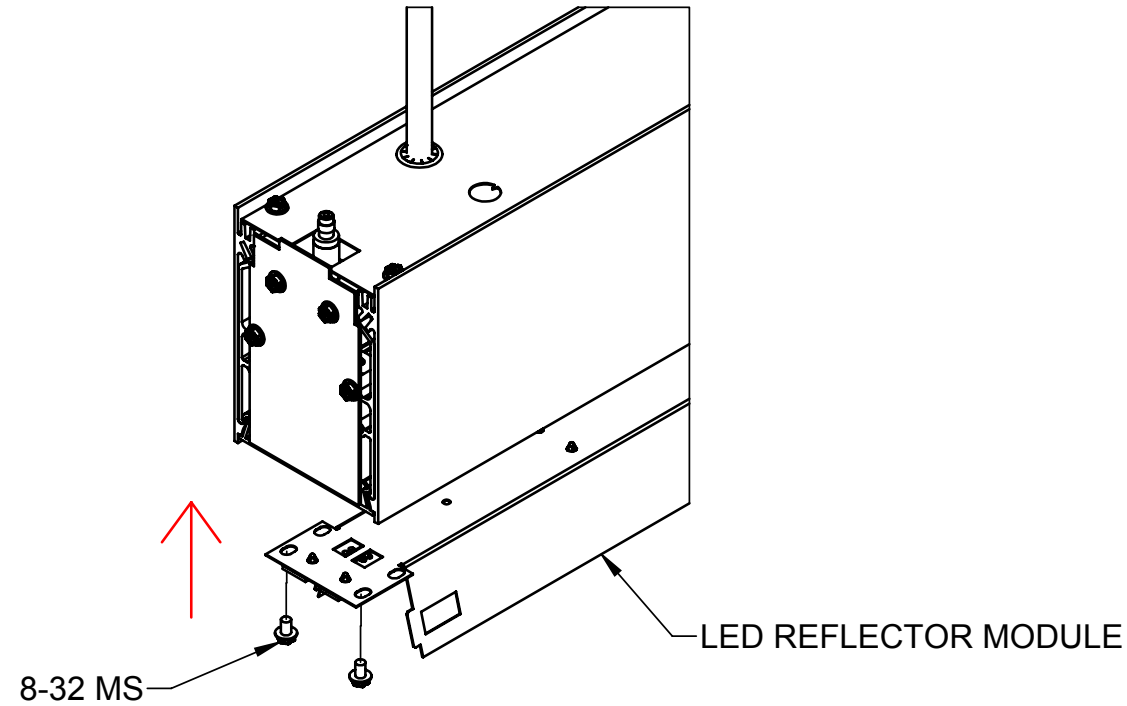
MOUNT NEXT FIXTURE IN ROW PER STEP 4. AT FIXTURE JOINT, ALIGN AND INSERT EXTRUSION BRACKET OF MALE FIXTURE INTO ADJOINING FIXTURE BEFORE SECURING JOINT USING 6-20 X 2" LONG HEX HEAD SCREWS. TIGHTEN EACH SCREW GRADUALLY, ALTERNATING BETWEEN SIDES. DO NOT OVER TIGHTEN EITHER SIDE AS THIS COULD CAUSE UNALIGNED FIXTURE STRAIGHTNESS AT JOINTS. IF REQUIRED, ADJUST MOUNTING SCREWS TO ENSURE PROPER ROW STRAIGHTNESS AND ALIGNMENT

6



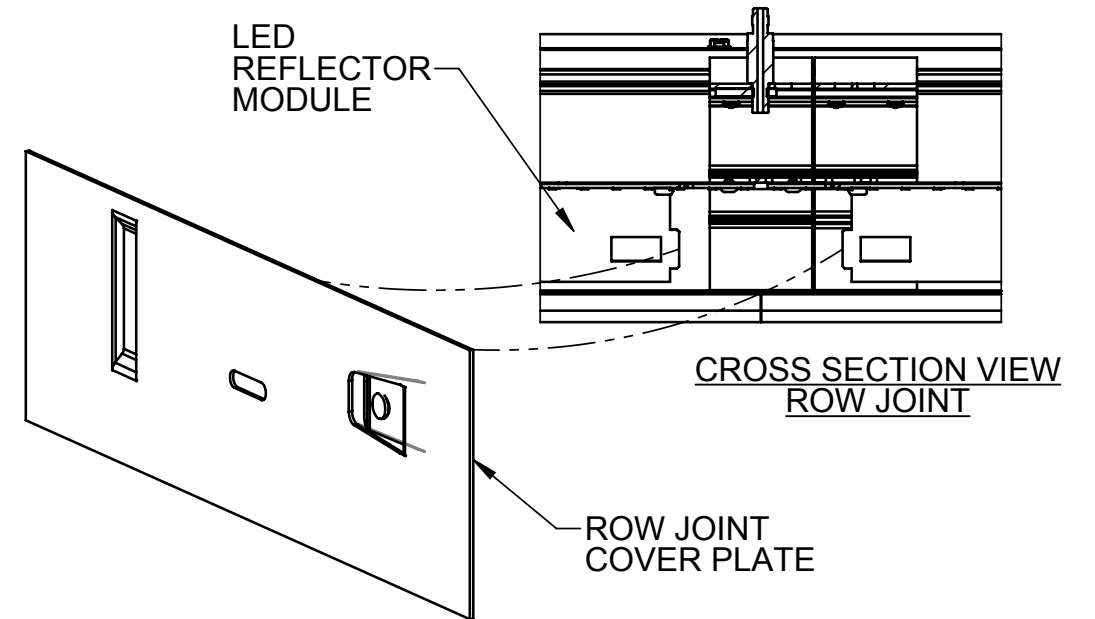
INSERT UNIVERSAL BUSHING ONTO FEED CORD AND INSERT BUSHING INTO 5/8" HOLE IN TOP OF HOUSING (AFTER REMOVING KNOCKOUT). MAKE WIRING CONNECTIONS. FOR ROW, WIRE FEED MAY BE BROUGHT INTO ABUTTING FIXTURES THROUGH WIREWAY OPENING IN END HEADERS.

7



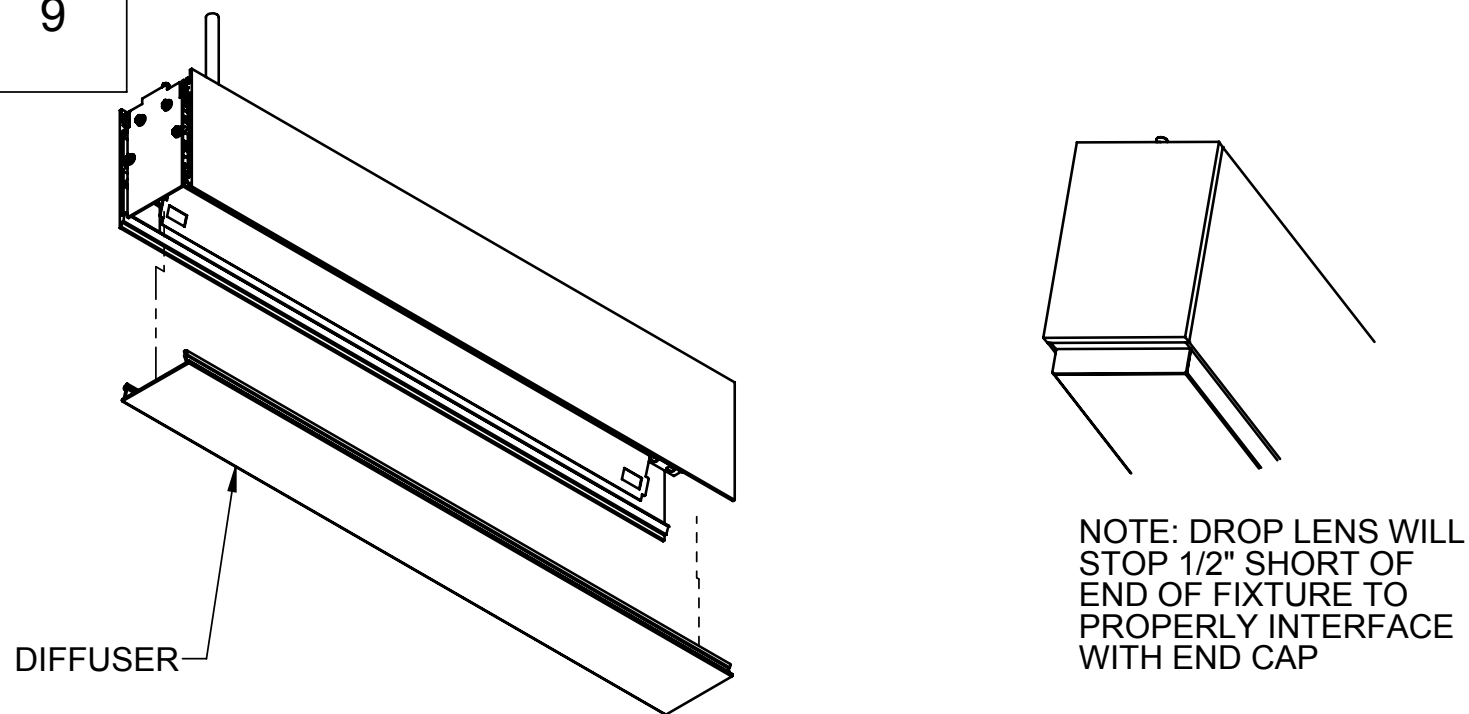
REATTACH LED REFLECTOR MODULE(S). CLEAN FIXTURE EXTERIOR WITH A GENERAL WINDOW CLEANER.

8



IF INSTALLING ROW, ATTACH ROW JOINT COVER PLATE(S) AT JOINT(S).

9



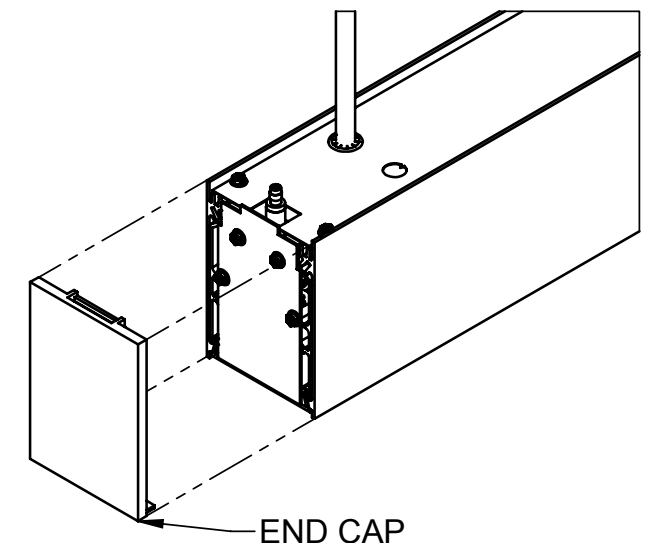
SNAP DIFFUSER INTO BOTTOM OF HOUSING. TO REMOVE, INSERT SCREW DRIVER OR FLAT HEAD PRY TOOL INTO THE SIDE SIDE OF THE HOUSING AND PULL DOWN. LAST DIFFUSER IN ROW MUST BE CUT TO LENGTH; SEE INSTRUCTION SHEET 510647.

10

IF INSTALLING INDIVIDUAL FIXTURE, ATTACH END CAPS TO EACH END OF FIXTURE.

IF INSTALLING ROW OF FIXTURES, ATTACH END CAPS TO EACH END OF ROW.

END CAPS ARE SECURED TO FIXTURE WITH MAGNETS (PREINSTALLED AT FACTORY). POSITION END CAPS SO THEY ARE FLUSH WITH SIDES OF HOUSING.



LK DUST COVER OPTION (SHIPPED SEPARATELY): PLACE DUST COVER INTO LED REFLECTOR MODULE ASSEMBLY. DUST COVER IS HELD IN PLACE BY MAGNETS.