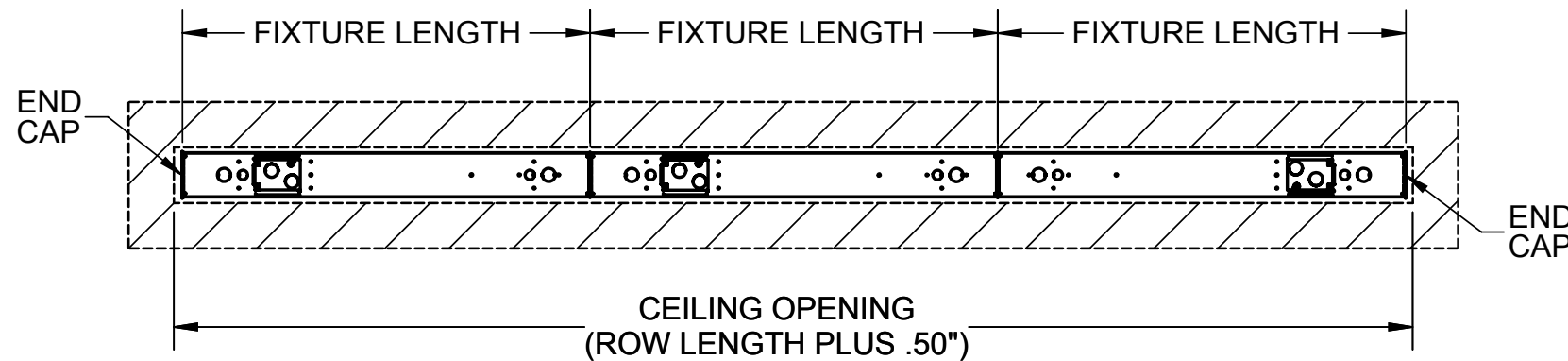
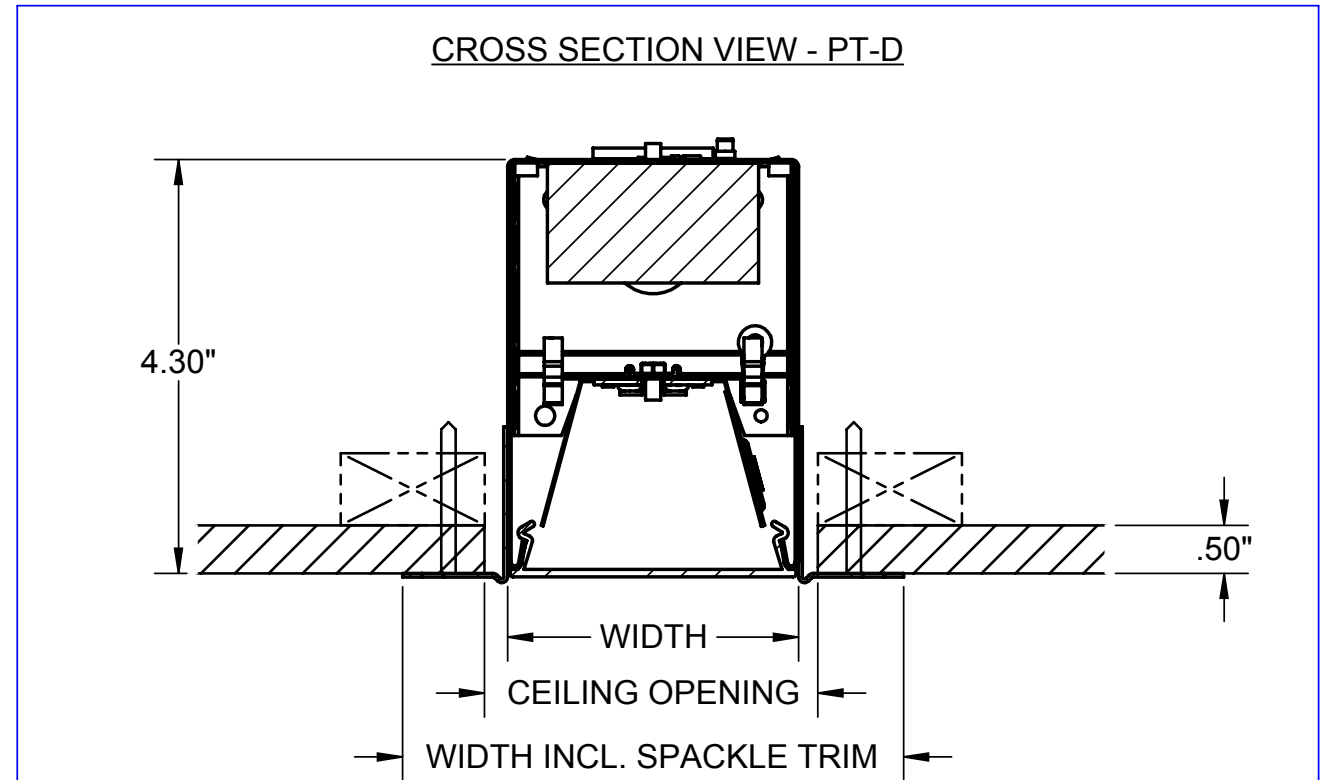


PLAN VIEW - INDIVIDUALLY MOUNTED



PLAN VIEW - ROW MOUNTED



WIDTH: MUST MAINTAIN THIS DIMENSION DURING INSTALLATION

- 3L - 3.00"
- 4L - 4.25"
- 6L - 6.25"

CEILING OPENING:

- 3L - 3.50"
- 4L - 4.75"
- 6L - 6.75"

WIDTH INCLUDING SPACKLE TRIM:

- 3L - 5.25"
- 4L - 6.50"
- 6L - 8.50"

GENERAL NOTES: (READ SHEETS COMPLETELY BEFORE STARTING)

1. FOR PT-AD, SEE INSTRUCTION SHEET 510647 FOR PROPER LENS INSTALLATION PROCEDURE.
2. LEAVE PROTECTIVE WRAPPING ON FIXTURE(S) UNTIL START OF INSTALLATION.
3. FIXTURES ARE PROVIDED WITH FACTORY-INSTALLED BRANCH CIRCUIT WIRING. REFER TO SUPPLEMENTAL INSTRUCTION SHEET WHEN MAKING CONNECTIONS.
4. FIXTURES ARE MOUNTED IN FRAMED PLASTER DRYWALL CEILING AND SUPPORTED WITH DRYWALL SCREWS. DRYWALL SCREWS ARE INSERTED THROUGH HOLES IN FIXTURE TRIMS AND END CAP TRIMS. SEE STEP-BY-STEP INSTRUCTIONS FOR IMPORTANT DETAILS.
5. FIXTURE WIDTH DIMENSION (SEE CROSS SECTION VIEW) MUST BE MAINTAINED FOR PROPER LENS INSTALLATION.
6. APPROXIMATE WEIGHT OF FIXTURE IS 3.5 LBS PER FOOT OF LENGTH.

TOOLS REQUIRED

- SCREWDRIVER/DRILL
- 11/32" NUT DRIVER

SUPPLIED BY INSTALLER

1

1/4 TURN FASTENER

TETHER

LED REFLECTOR MODULE

DETACH LED REFLECTOR MODULE(S) FROM FIXTURE(S) BY LOOSENING 1/4 TURN FASTENERS. ALLOW MODULE(S) TO HANG DOWN ON NYLON TETHERS.

2

7/8" KNOCK-OUTS

ACCESS COVER

REMOVE ACCESS COVER FROM FIXTURE HOUSING (1ST FIXTURE IN ROW) BY SLIDING AND SHIFTING IT OUT. REMOVE (1) 7/8" KNOCK-OUT AT DESIRED ELECTRICAL FEED LOCATION. BRANCH CIRCUIT WIRING CAN BE PULLED OUT THROUGH HOLE. REPLACE ACCESS COVER.

3

#8 SMS

END CAP ASSY.

MOUNT END CAP ASSEMBLIES USING (2) #8 SHEET METAL SCREWS. FOR INDIVIDUAL FIXTURE, DO SO AT BOTH ENDS OF FIXTURE. FOR ROW, DO SO AT NEAR END OF FIRST FIXTURE AND FAR END OF LAST FIXTURE. END CAP TRIM MUST BE FLUSH WITH SIDE TRIM.

4

MIN. (2) SCREWS ON END CAP TRIM

SCREW AT EACH END OF SPACKLE TRIM

SCREWS APPROX. 12" APART

LIFT FIXTURE (1ST FIXTURE OF ROW) NEAR CEILING. BRING WIRE FEED INTO WIREWAY VIA 7/8" HOLE. RAISE FIXTURE FLUSH TO CEILING OPENING AND SECURE BY INSERTING DRYWALL SCREWS THROUGH SPACKLE TRIMS. DO NOT FULLY TIGHTEN SCREWS AT THIS TIME. SEE ILLUSTRATION FOR PROPER LOCATIONS OF SCREWS (MARKED IN RED). MAKE WIRING CONNECTIONS.

5

IF INSTALLING INDIVIDUAL FIXTURE, SKIP TO STEP 6.

FASTENER LOCATIONS

LIFT AND INSTALL NEXT FIXTURE IN ROW, LOOSELY SECURING DRYWALL SCREWS. BOLT ADJOINING FIXTURES TOGETHER. FOR 3L, USE (2) #8 SHEET METAL SCREWS. FOR 4L AND 6L, USE (2) 8-32 X 3/8" LONG MACHINE SCREWS AND NUTS. LEVEL AND ALIGN FIXTURES BEFORE TIGHTENING. BRING WIRING THROUGH 7/8" HOLES AT FIXTURE ENDS. REPEAT FOR ALL FIXTURES IN ROW.

6

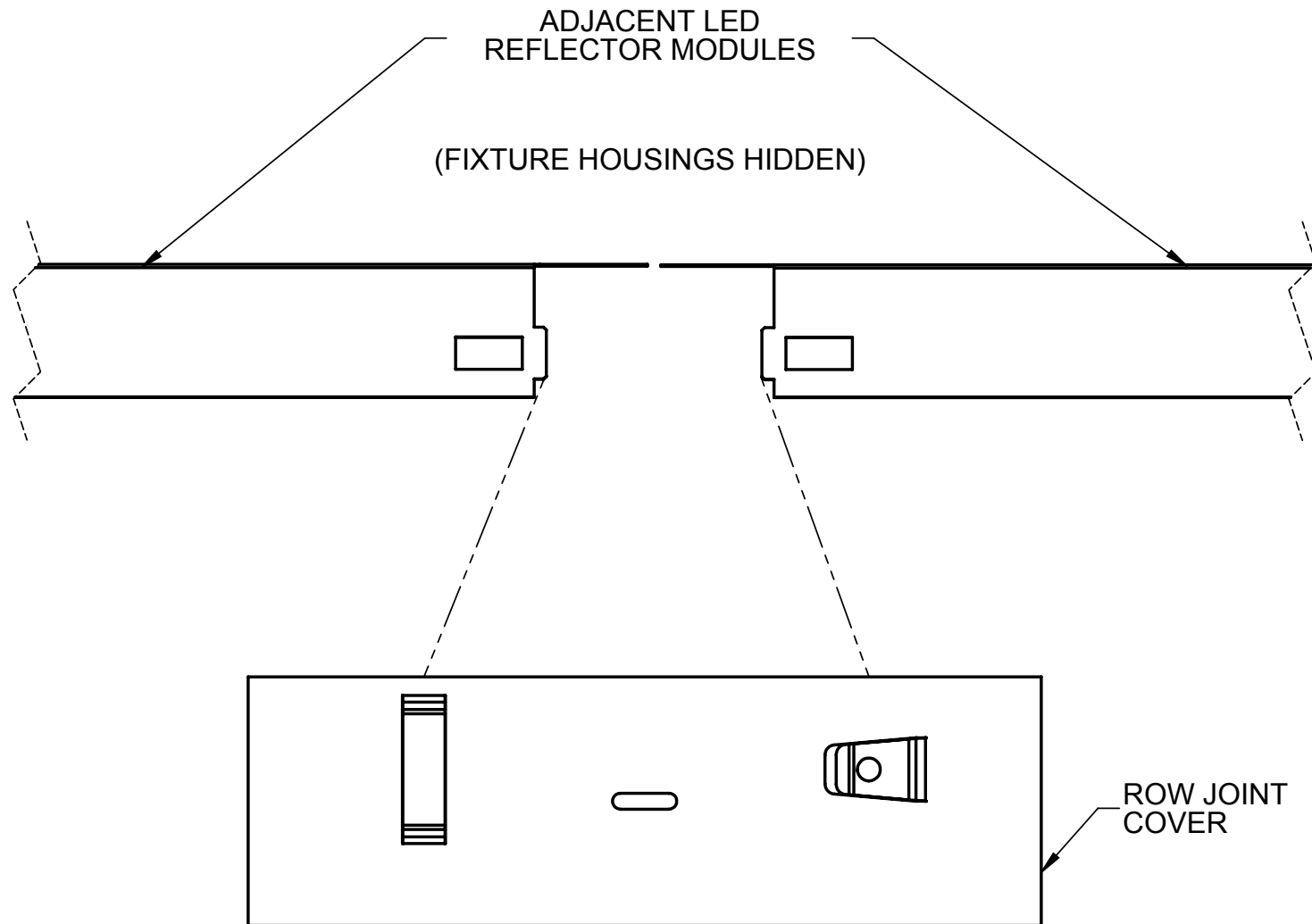
5.00

5.00

DIFFUSER SECTION

REPLACE LED REFLECTOR MODULE(S). FOR EACH FIXTURE, INSTALL (3) DIFFUSER SECTIONS AT THE CENTERLINE AND AT 5" FROM EACH END. SEE ILLUSTRATION FOR DETAILS. TIGHTEN DRYWALL SCREWS AFTER ENSURING THAT DIFFUSER SECTIONS FIT.

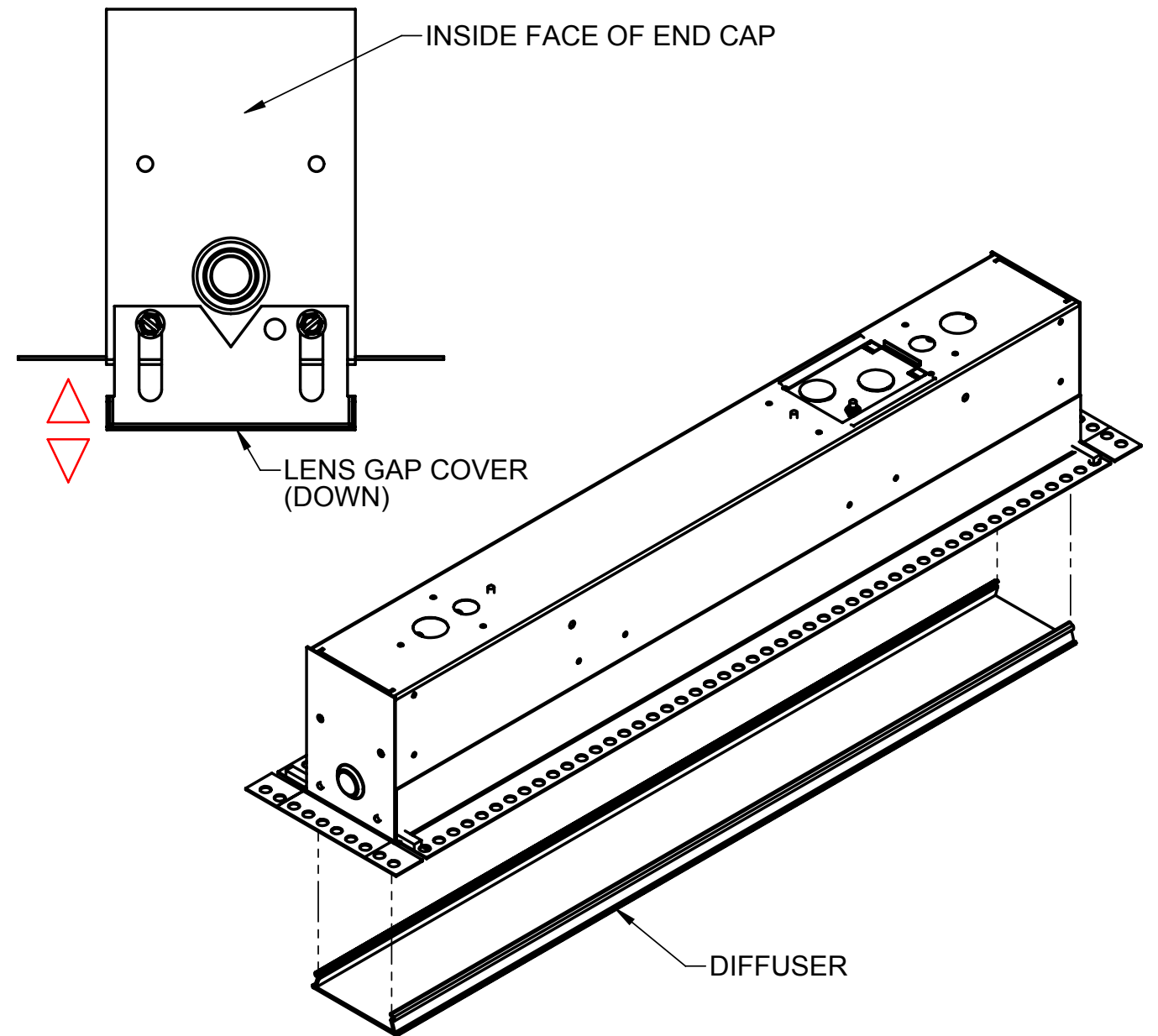
7



FOR ROW, ATTACH ROW JOINT COVER(S) (SHIPPED SEPARATELY), AS SHOWN, AT EACH JOINT.

8

CLEAN FIXTURE EXTERIORS WITH A GENERAL WINDOW CLEANER. APPLY FINISH PLASTER COAT OVER SPACKLE TRIMS, COVERING DRYWALL SCREWS. PLASTER COAT UP TO BEADED EDGE OF TRIM. AVOID GETTING PLASTER ON INTERIOR SURFACES OF FIXTURE.



PULL LENS GAP COVER DOWNWARD INTO THE POSITION SHOWN. SNAP DIFFUSER INTO BOTTOM OF FIXTURE HOUSING AND PUSH LENS GAP COVER BACK UP. TO REMOVE DIFFUSER, PULL LENS GAP COVER DOWN, THEN INSERT SCREWDRIVER OR FLAT HEAD PRY TOOL INTO SIDE OF HOUSING AND PULL DOWN.

NOTE:
LAST DIFFUSER IN ROW MUST BE CUT TO LENGTH PER INSTRUCTION SHEET 510647.