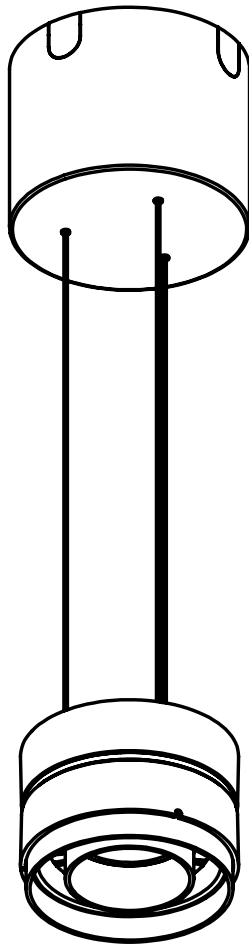


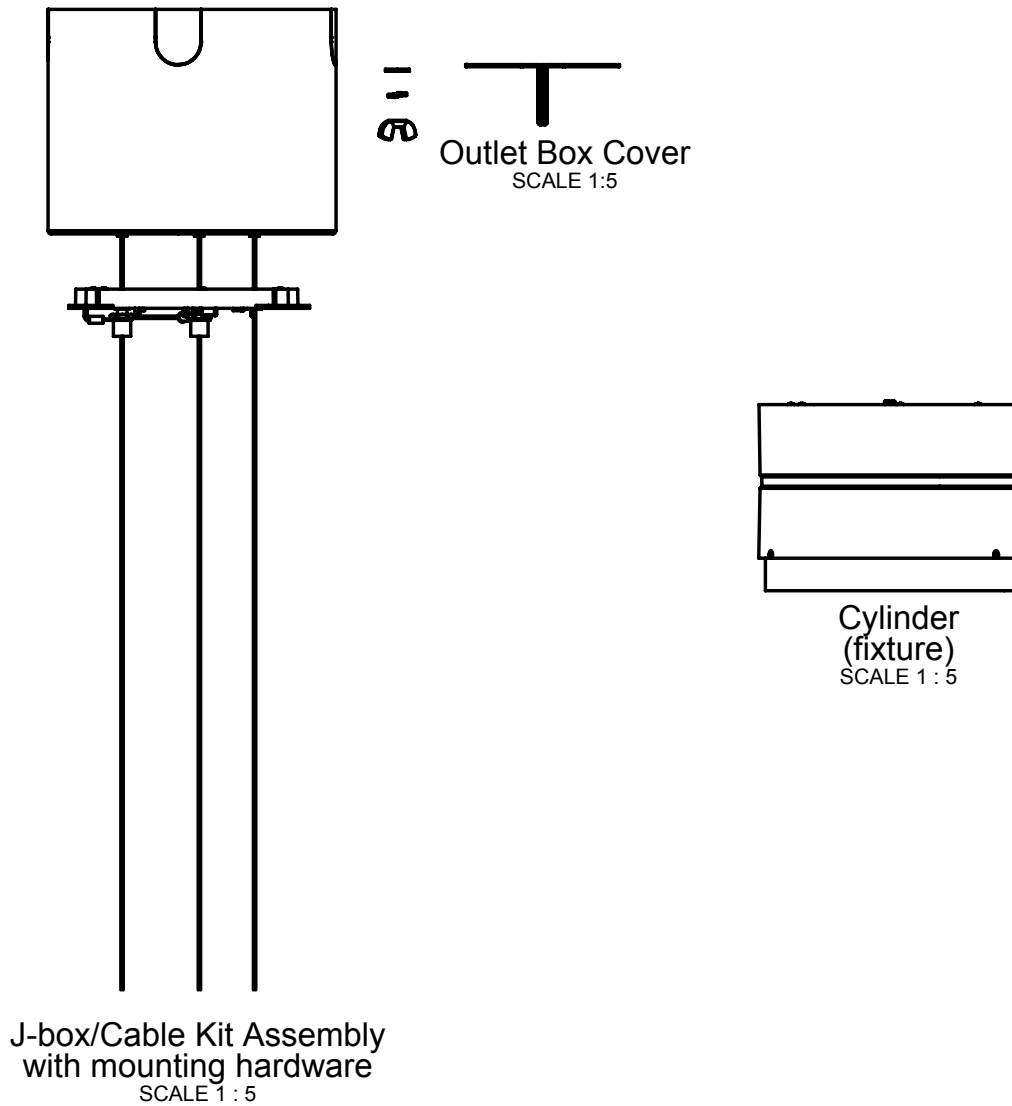
Inde-Pendants Family

32L Cylinder Open
Ceiling Types

Installation instructions for
32L-C-P-ID
32L-C-P-D



Supplied by Litecontrol



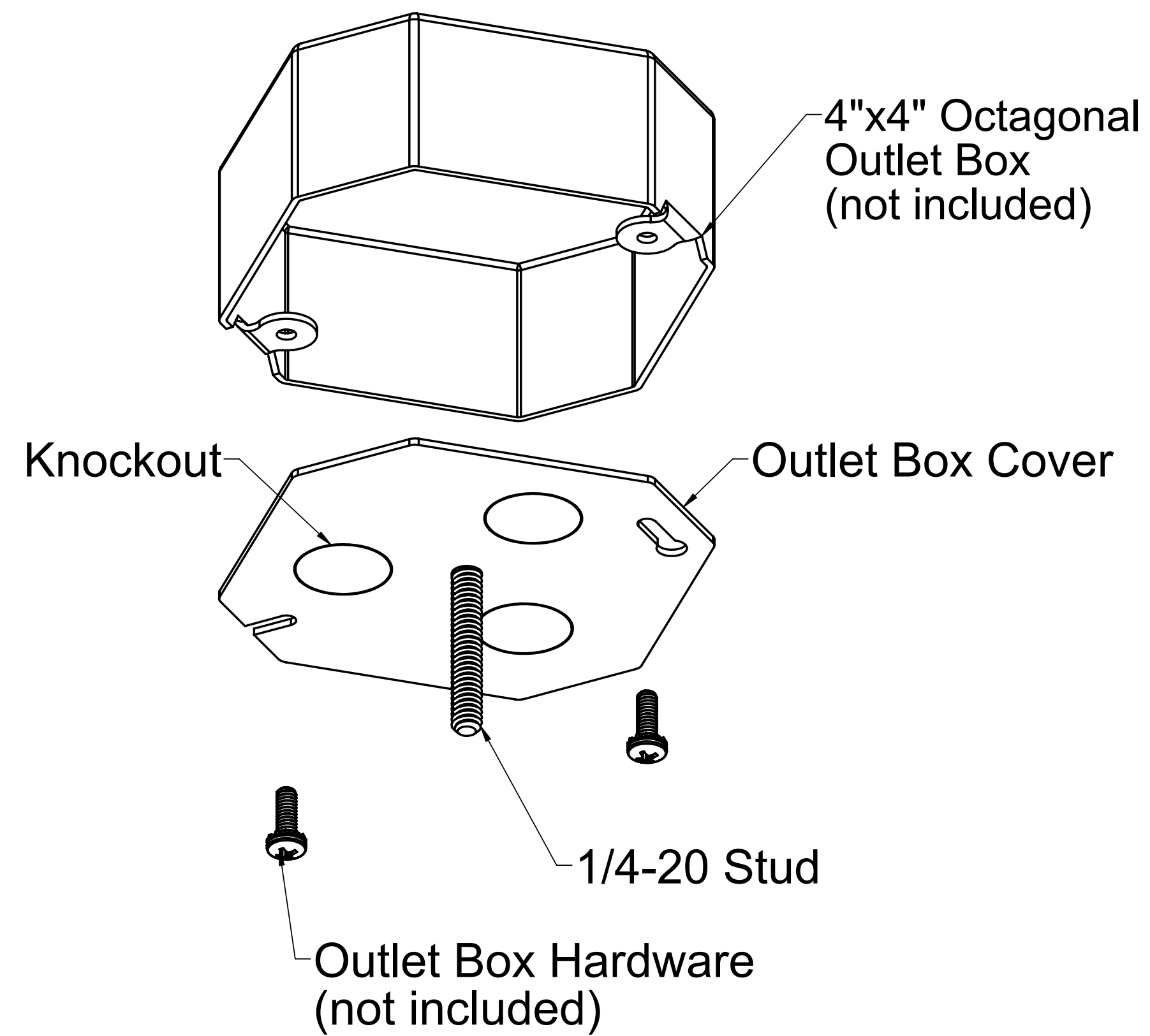
Supplied by Contractor

- Standard 4 X 4 octagonal outlet box with mounting hardware
- Feed cord
- Wire nuts

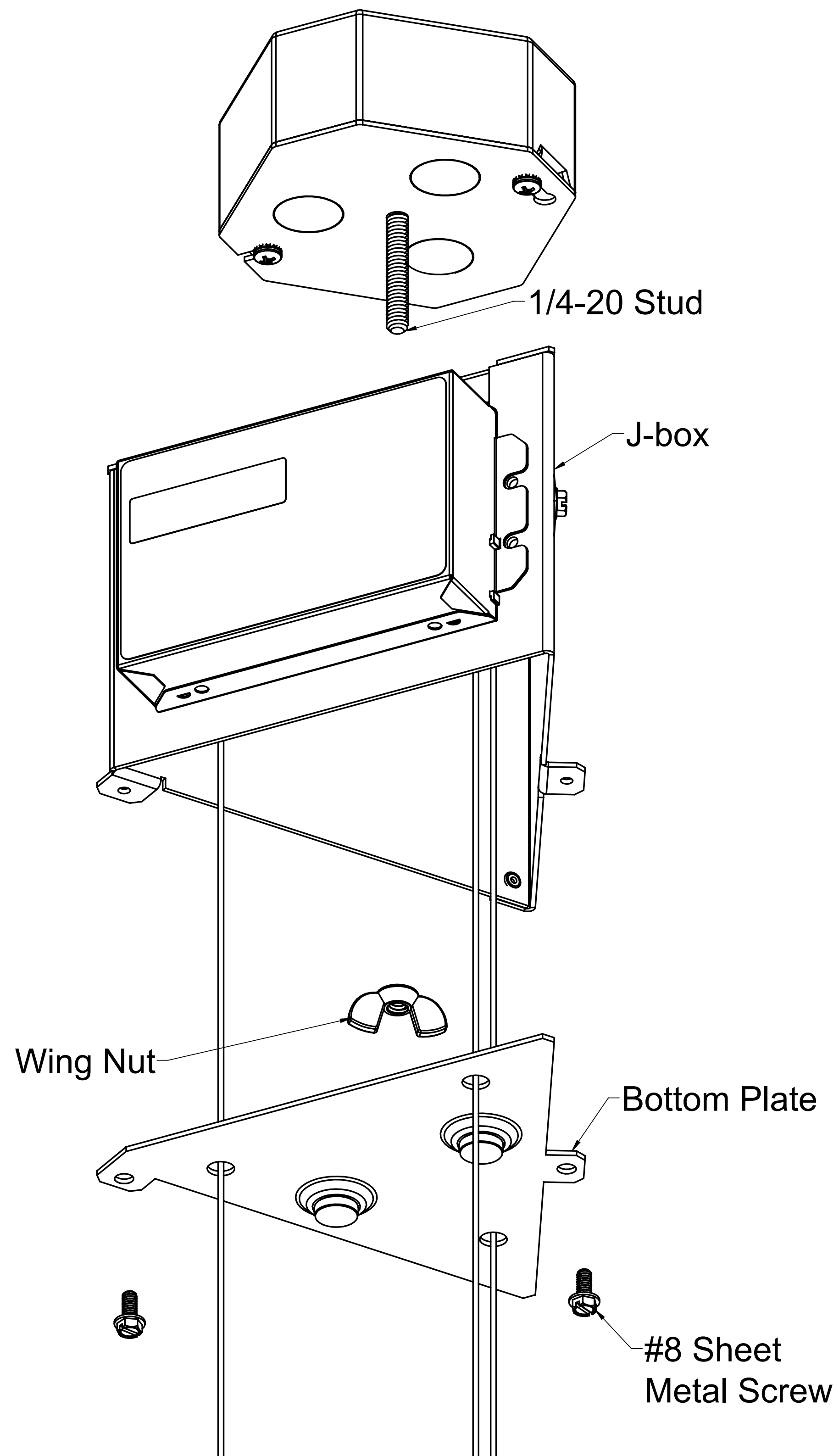
Tools Required

- Wire cutters/strippers
- Tape measure
- Marker
- Felco-type cable cutters
- 1/4" Socket with wrench or flat-head screwdriver
- Level

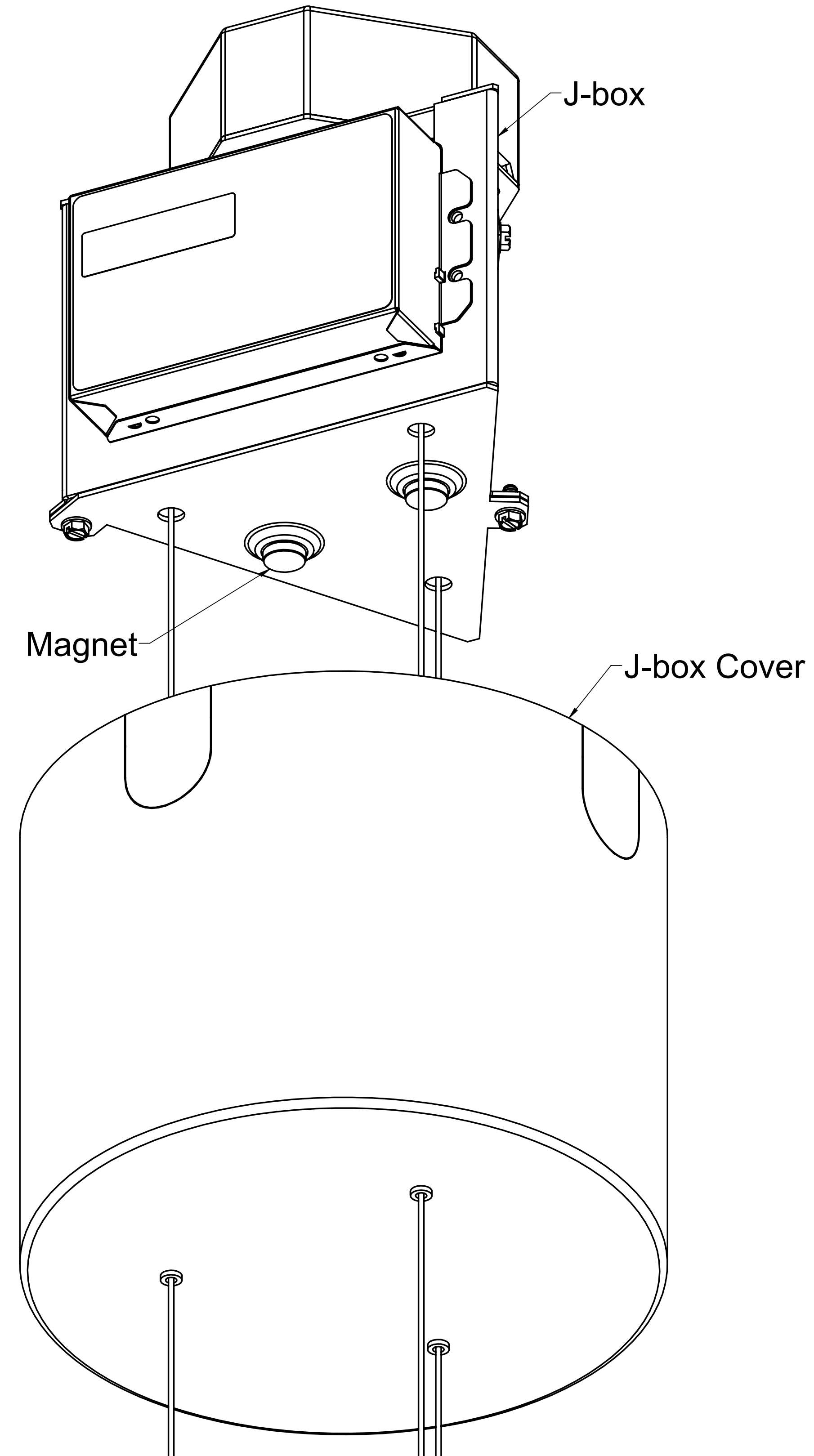
1



2



3

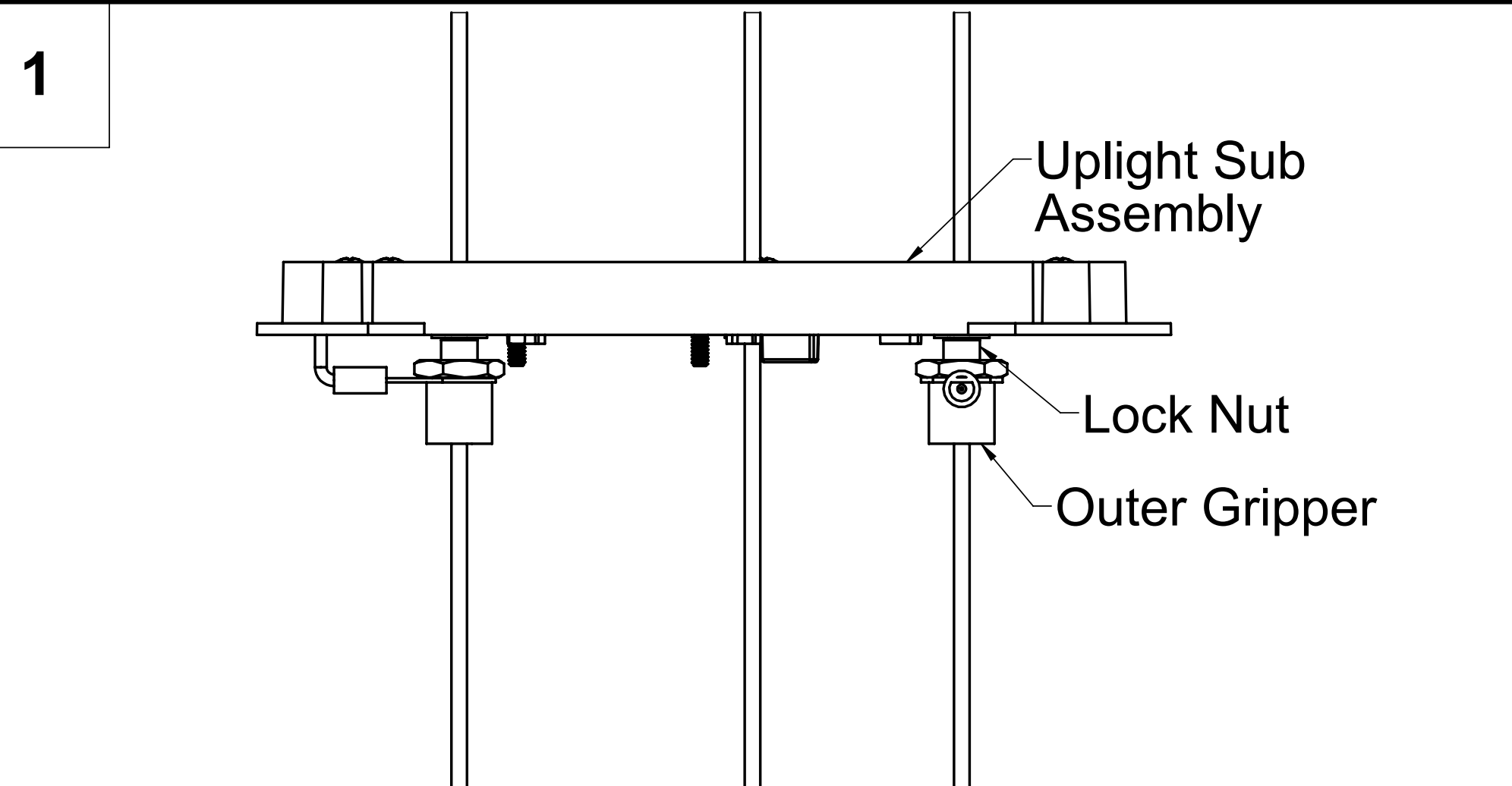


1. The J-box (provided) installs on a standard 4x4 octagonal outlet box. The outlet box must be installed per code at the support location prior to J-box installation.
2. Install the provided **Outlet Box Cover** on the octagonal outlet box as shown using the screws provided with the outlet box.
3. Bring the wires out of the octagonal outlet box through the knockouts in the Outlet Box Cover.

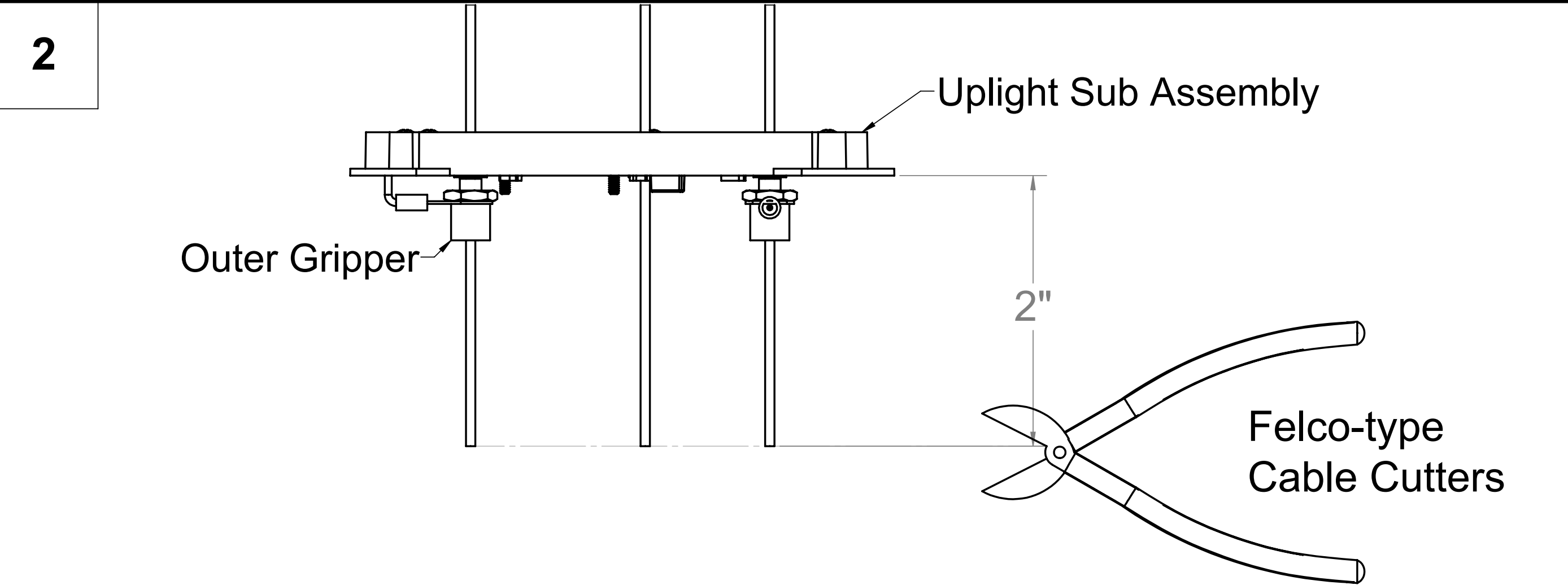
1. Remove the **Bottom Plate** of the J-box.
2. Remove knockouts from **J-box top** as needed.
3. Install electrical feed cord in the J-box.
4. Lift the J-box up while sliding the 1/4-20 Stud in the **Outlet Box Cover** through the center hole in the top of the J-box so that it fits tightly against the Outlet Box Cover.
5. Secure the J-box in place with the **wing nut** and make all wiring connections (see attached wiring diagrams).
6. Re-install the bottom plate using the two **#8 screws**.

1. Bring the **J-box Cover** up the cables until it presses against the bottom of the J-box. The J-box Cover will be held in place by the pre-installed magnets on the bottom of the J-box.

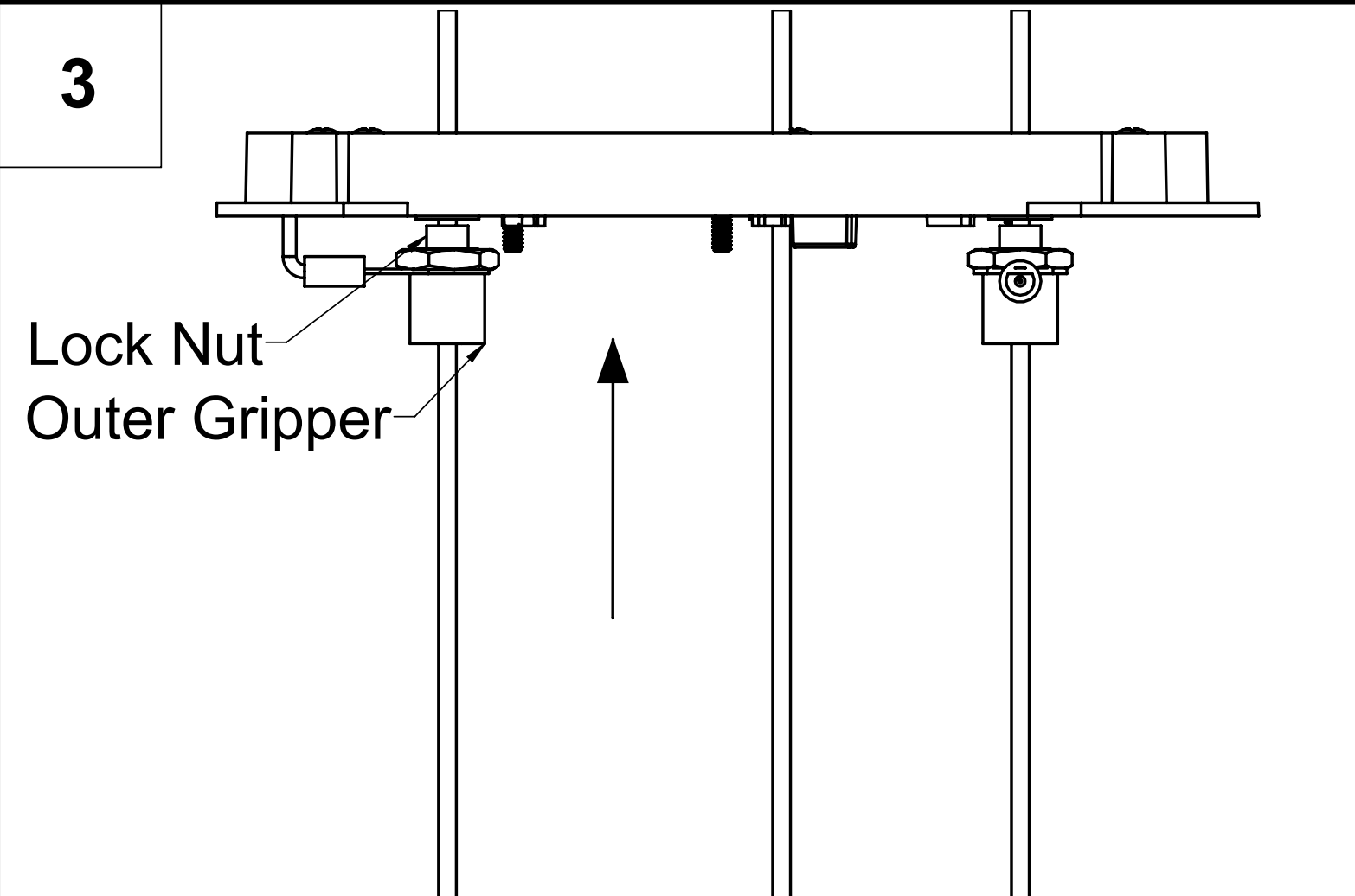
Completed J-box installation should match **Figure 1** on page 6.



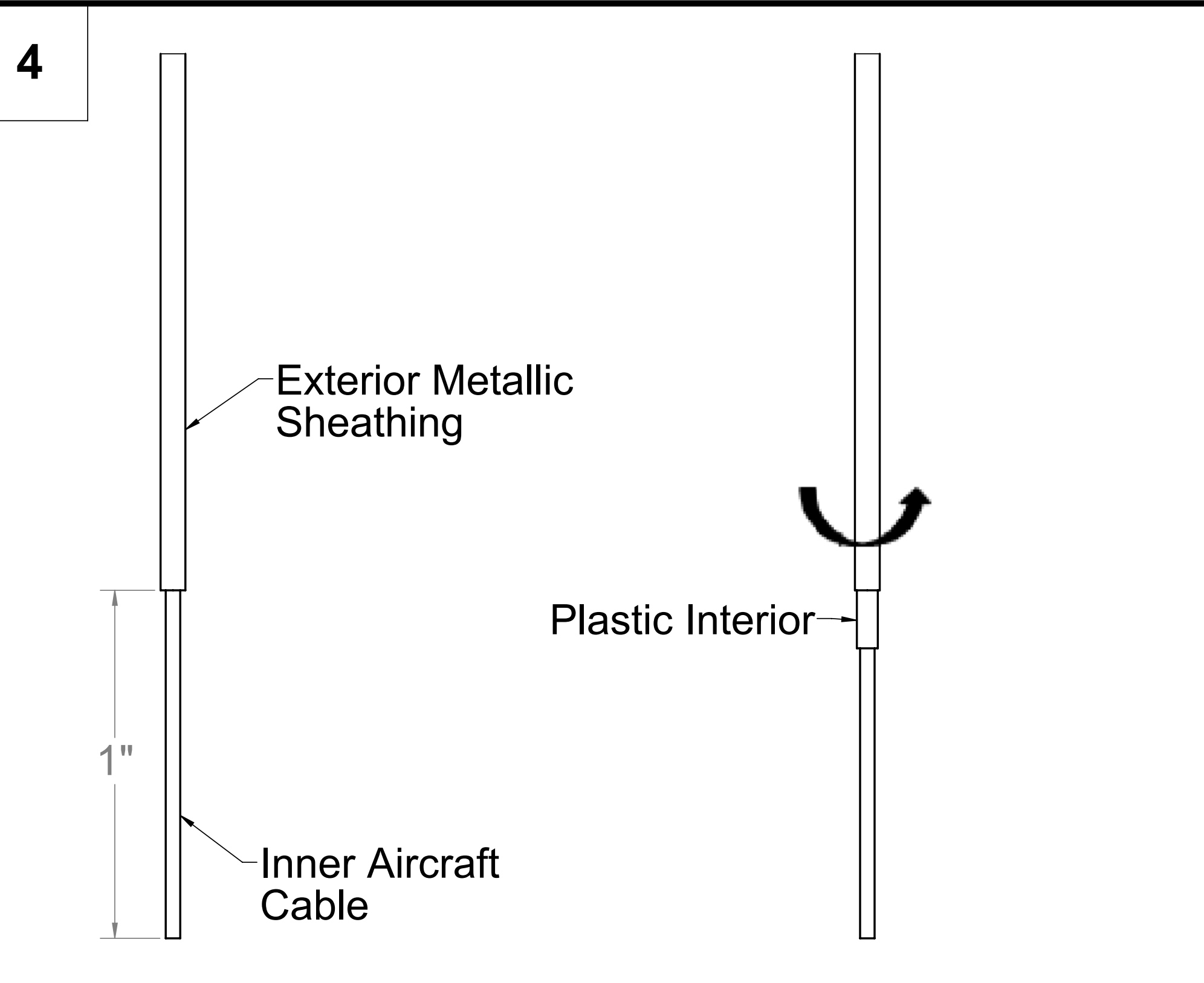
1. Once the J-box has been properly installed, lower the **Uplight Sub Assembly** to the desired fixture height by adjusting the outer grippers below it (adjust grippers by loosening lock nuts and pressing them against grippers)
 2. Level the assembly
Note: For configurations with no Uplight there will only be 1 Outer Gripper
The minimum height from the ceiling is 12" (see step 8 for visual reference). The top of the Uplight sub assembly will be flush with the top of the cylinder after the fixture has been fully installed.



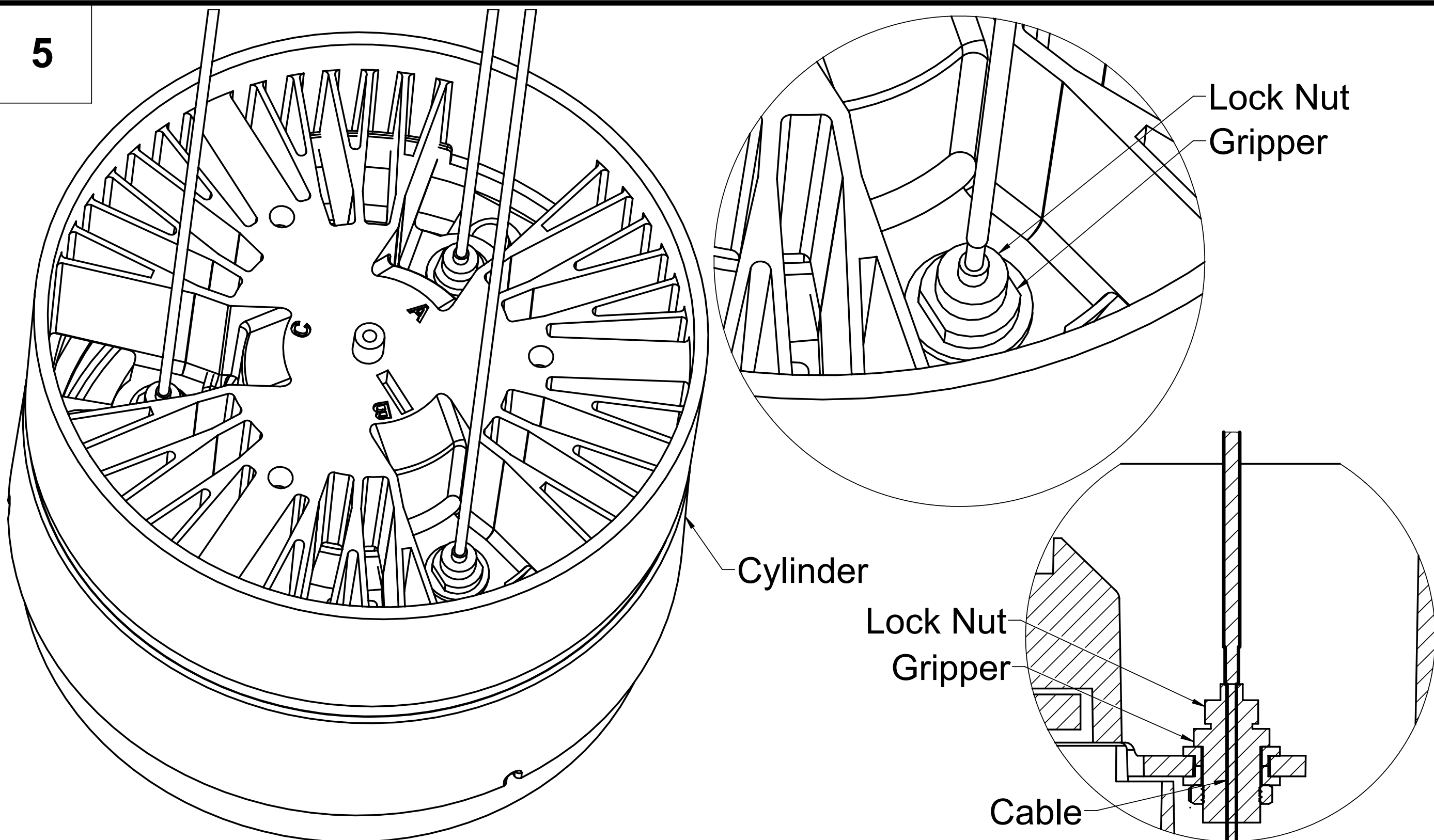
1. Measure 2" below the **Uplight Sub Assembly** and mark the location with a permanent marker
 2. Cut the cables at the marked location using **FELCO-TYPE CABLE CUTTERS**.



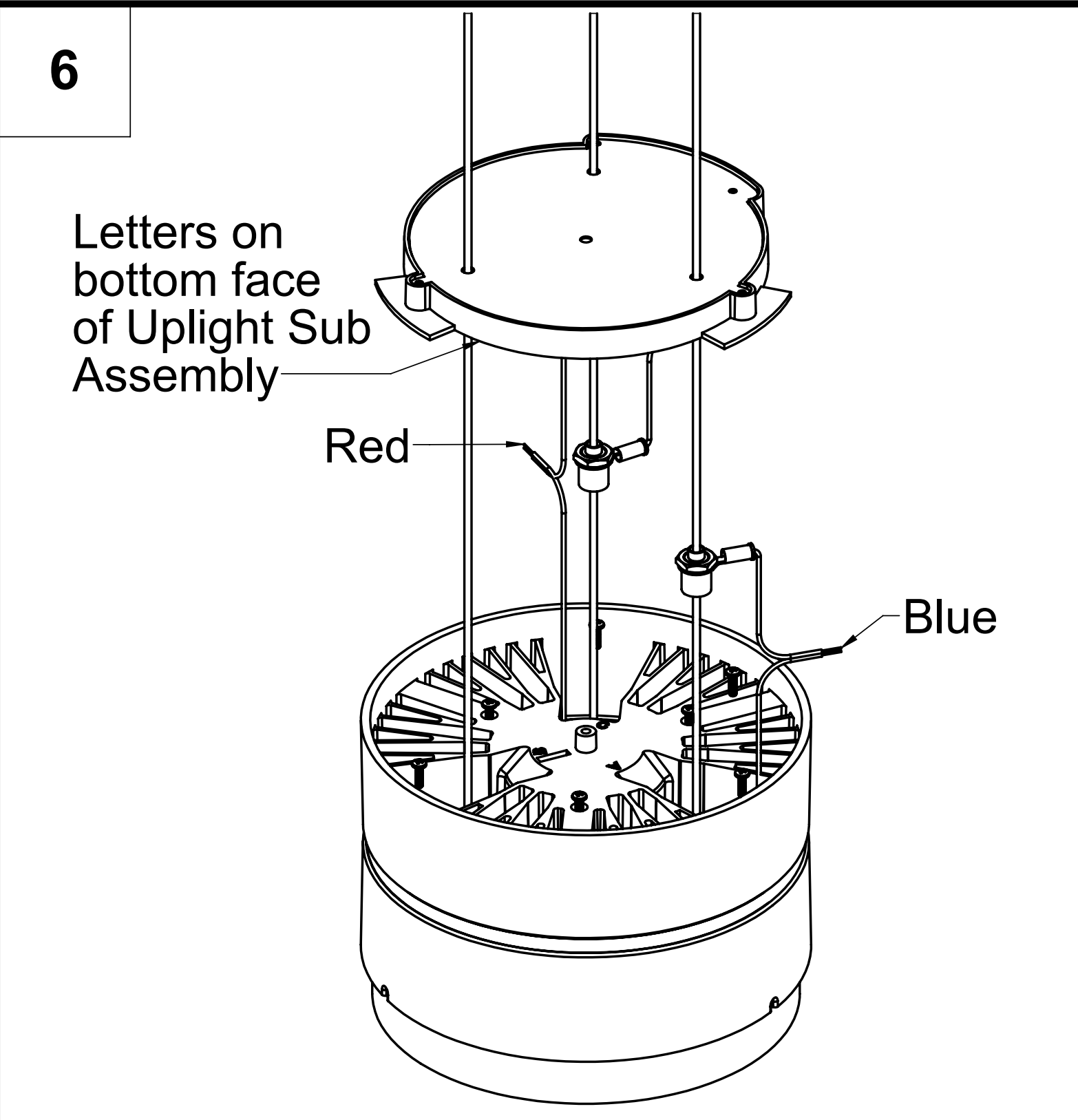
1. Move the **Uplight Sub Assembly and Outer grippers** up and out of the way temporarily by loosening **lock nuts** and pressing them against the grippers



1. Measure 1" from bottom of the cable and mark the location
 2. Strip 1" of the metallic exterior and plastic interior off of the coaxial cable (using 16 gage wire strippers), leaving 1" of the **inner aircraft cable** exposed. (Left Image)
 3. Twist and move the **metallic exterior jacketing** up so that 1/8" to 1/4" of the **plastic interior** is exposed.
IMPORTANT: Do not let the exterior metallic sheathing and the inner aircraft cable touch. (Right Image)

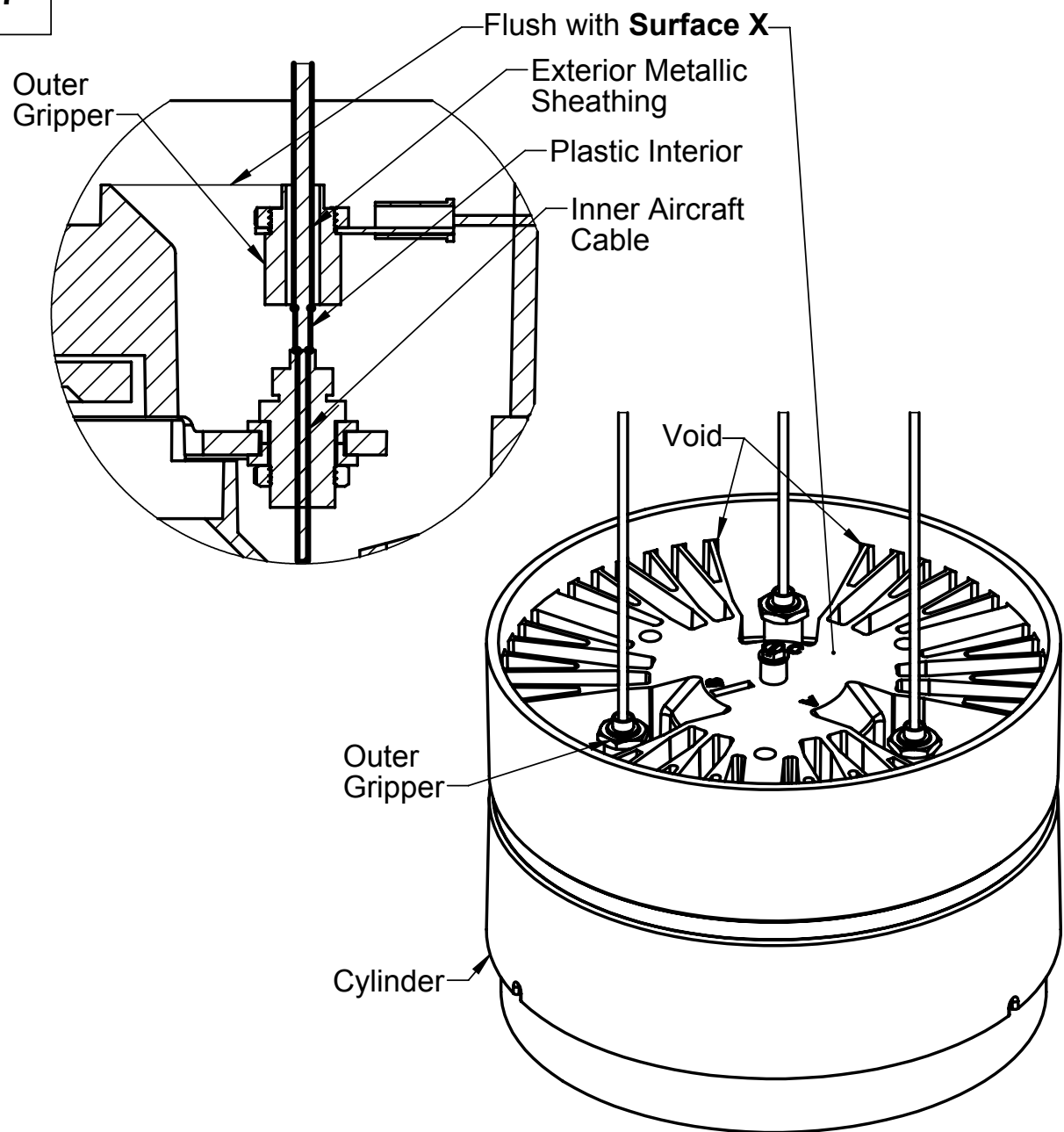


1. Match the letter indicators on the **Uplight Sub Assembly** with the letters on the Cylinder to ensure correct fixture orientation.
 2. Loosen the **Gripper Lock Nuts**
 3. Feed the cables into their respective grippers as far as they'll go
 4. Check that the Cylinder is level and adjust the cables accordingly before fully securing the gripper lock nuts.

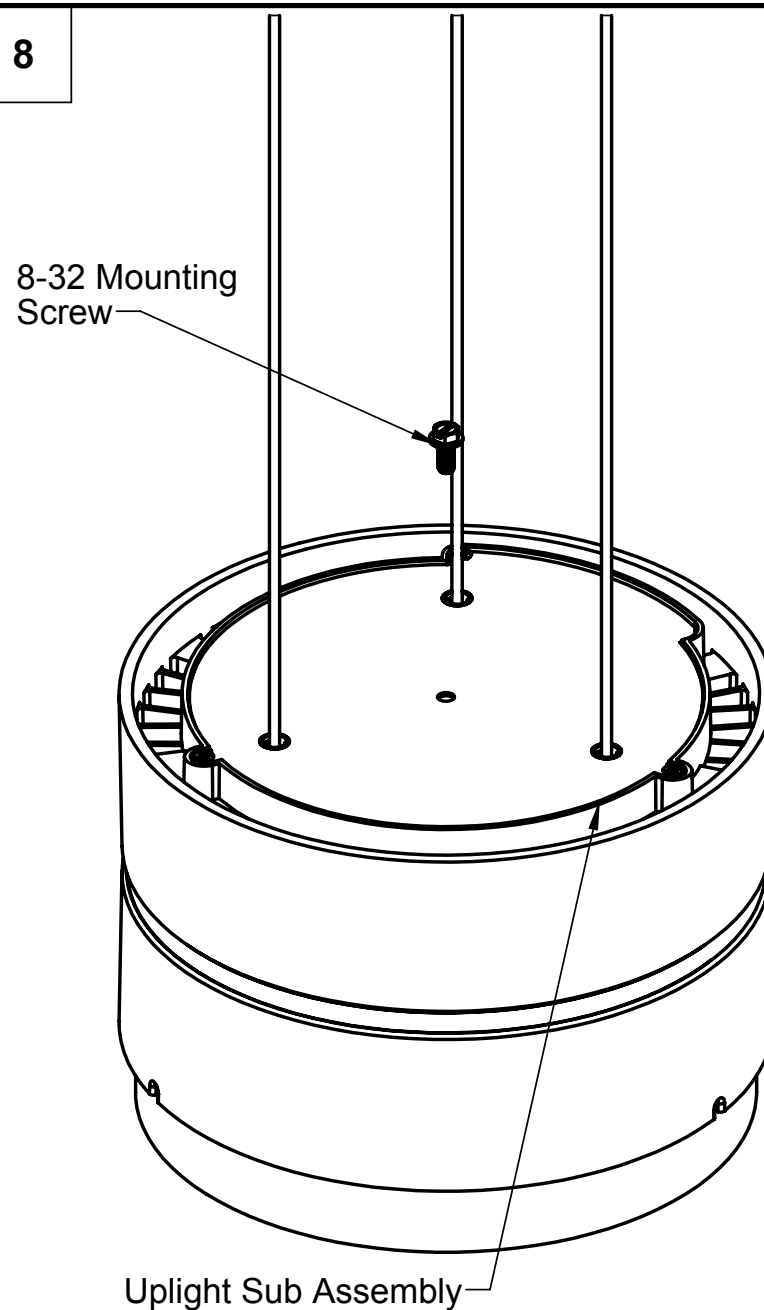


1. Make the wiring connections as shown in the above image between the blue and red wires in the Cylinder and Uplight Sub Assembly. **If there is no uplight, no wiring is required to the Uplight Sub Assembly (no red wire connections).**
 2. Using three wire nuts, connect red wire with red wire, and each blue wire with respective blue wire according to the alignment between the Cylinder and the Uplight Sub Assembly.

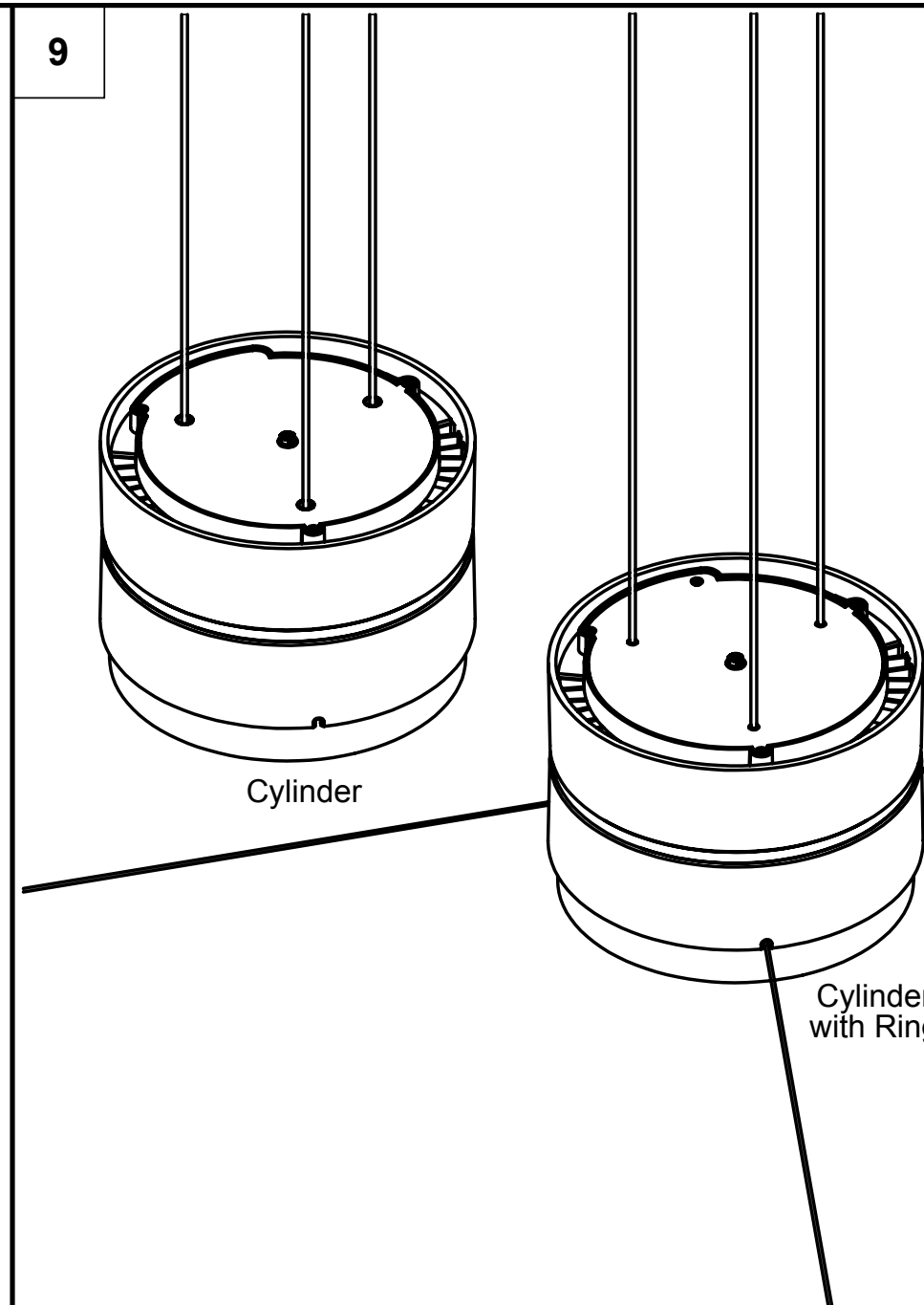
7



8



9



1. **Lower the Outer Grippers** so that they are inside the voids and flush with **Surface X**. The Outer Grippers should not be exposed at all above the voids.

Note: If the Outer Grippers come off of the Exterior Metallic Sheathing and are no longer making contact with it, secure them back on the cables by removing the cable from the gripper completely, removing the Outer Gripper, twisting/tightening the Exterior Metallic Sheathing, and putting the Outer Gripper back on the cable by completely loosening the plastic cap on the gripper and feeding the cable into the Outer Gripper while twisting the Outer Gripper. **The Outer Grippers must be in contact with the Exterior Metallic Sheathing for the fixture to illuminate.**

1. Remove the **8-32 Mounting Screw** from the **Cylinder**.
2. Lower the **Uplight Sub Assembly** onto the Cylinder
3. Reinstall 8-32 mounting screw thereby securing the Uplight Sub Assembly to the Cylinder.

For Cylinder only fixture (left), the installation is now complete. Reverse instructions to uninstall fixture and J-box.

For Cylinder with Ring fixture (right), see Ring installation sheets to complete installation.

Completed Cylinder installation should match **Figure 2** on page 6.

Figure 1
Completed J-box installation

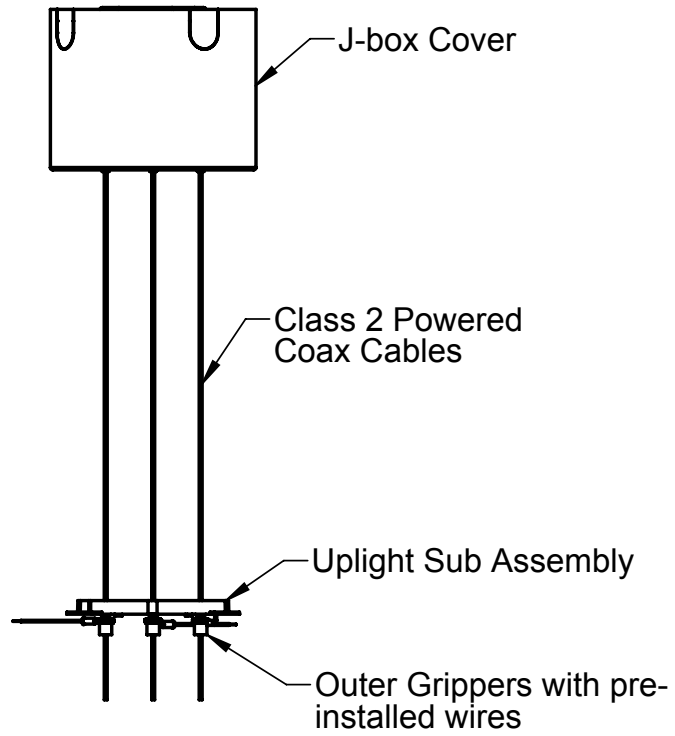
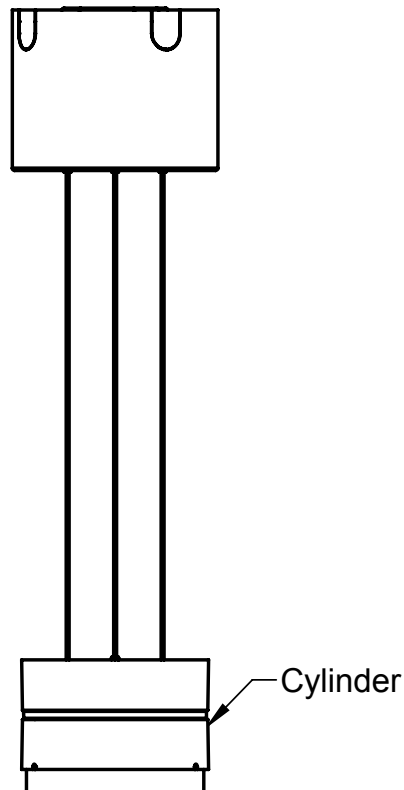
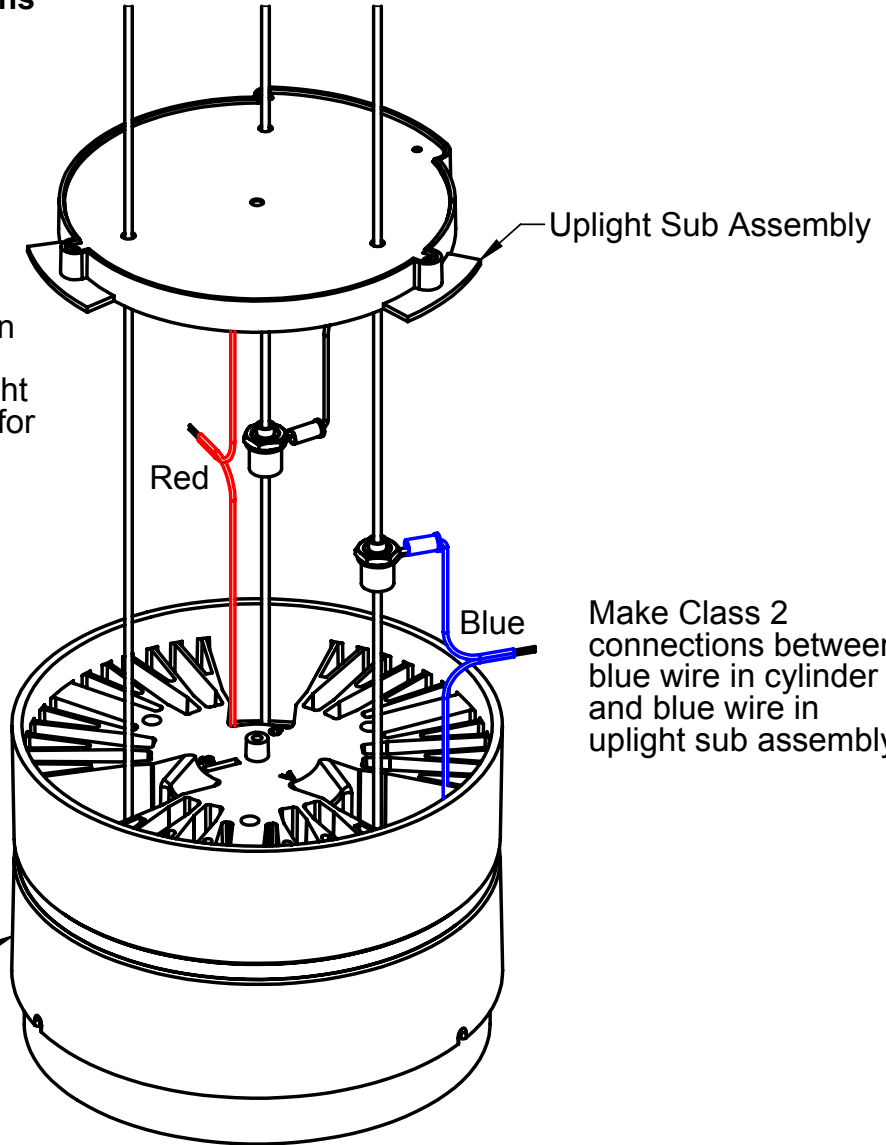


Figure 2
Completed fixture installation



Cylinder wiring instructions

Make Class 2 connections between red wire in cylinder and red wire in uplight sub assembly (only for fixtures with uplight)



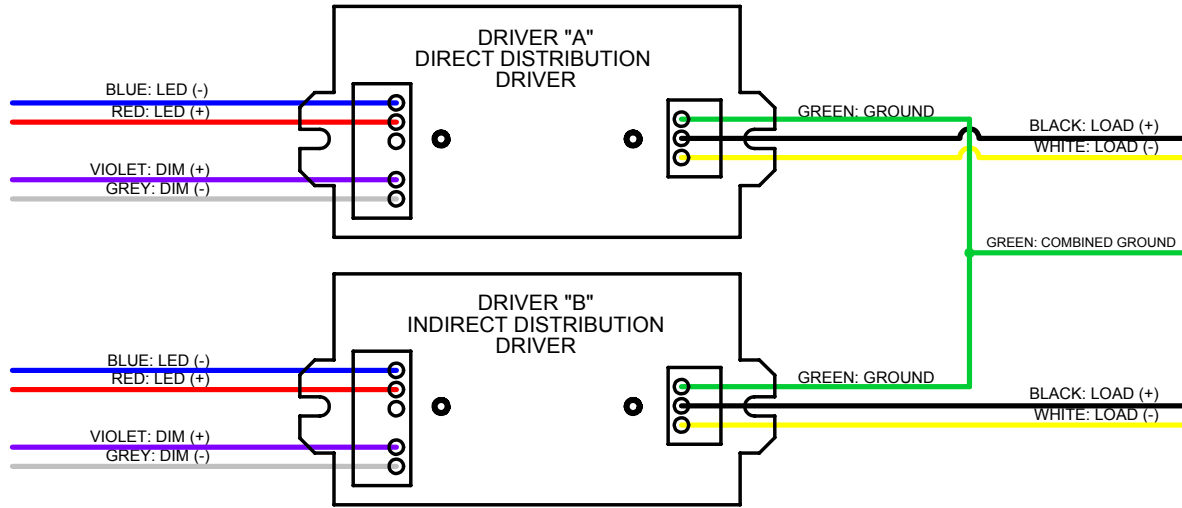
Make Class 2 connections between blue wire in cylinder and blue wire in uplight sub assembly

WIRING DIAGRAMS

APPLICABLE FIXTURE TYPES:

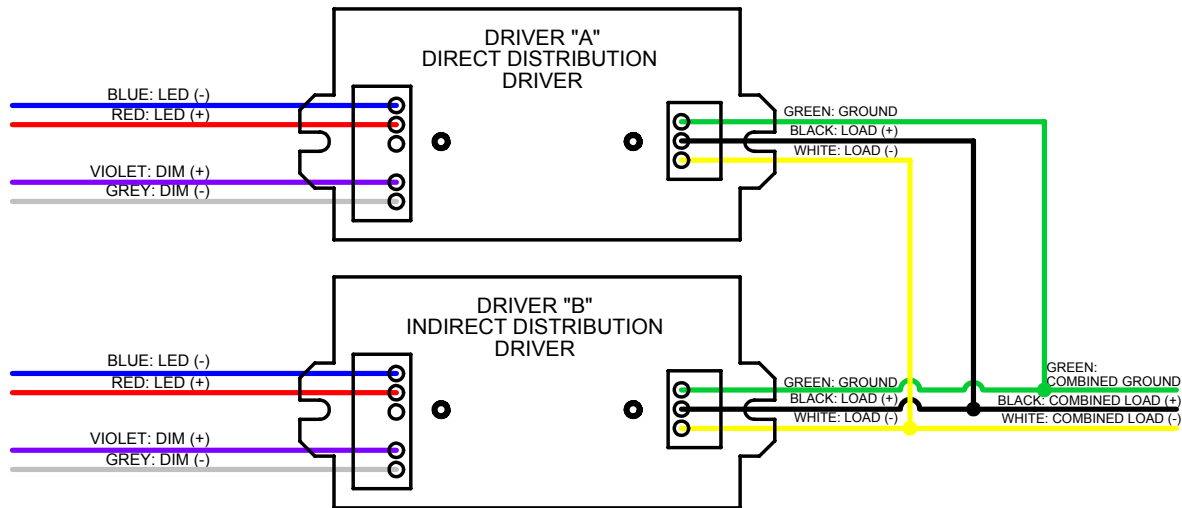
- 32L-C-P-ID

STANDARD WIRING
(CAN ALSO BE USED IN NIGHTLIGHT APPLICATIONS)



ALTERNATIVE FIELD WIRING OPTIONS

SINGLE CIRCUIT SUPPLY WIRING

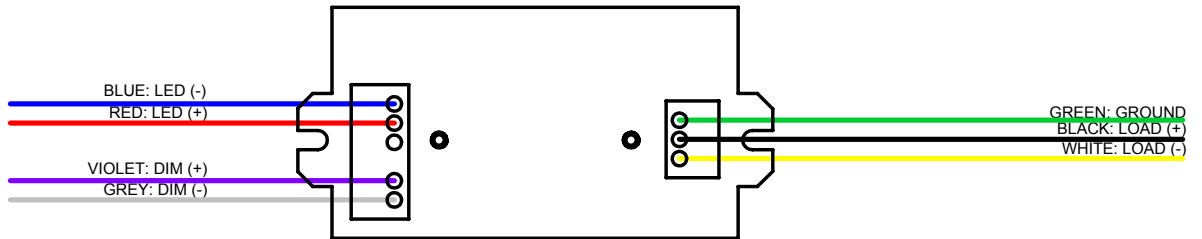


WIRING DIAGRAM

(NO UPLIGHT)

APPLICABLE FIXTURE TYPES:

- 32L-C-P-D



Cylinder Label Positioning

If fixture is damaged or additional assistance is needed, call the number on the label to speak with a Litecontrol representative

CONTACT LITECONTROL FOR REPLACEMENT PARTS 781-294-0100	MODEL: 32L DATE: ___/___/___ CCT: _____	LMA  C US 159392
---	--	--

