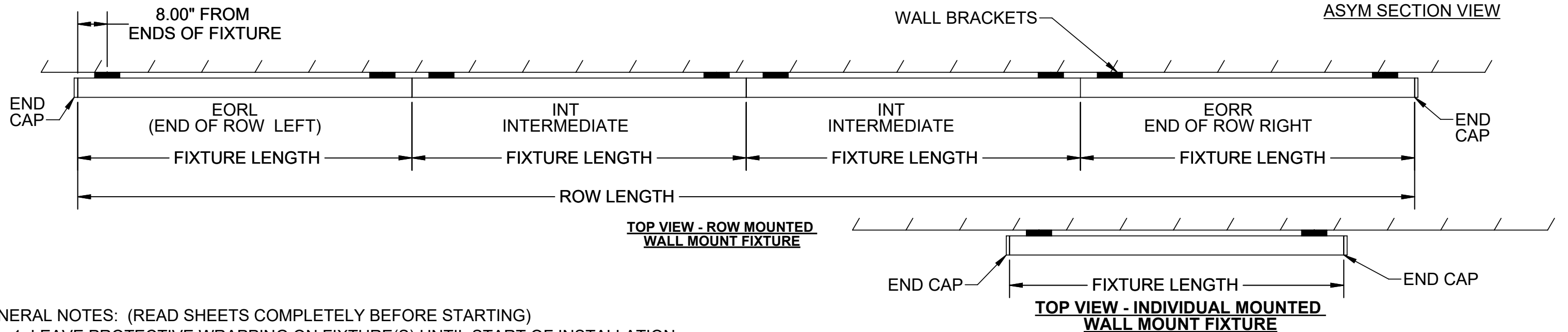
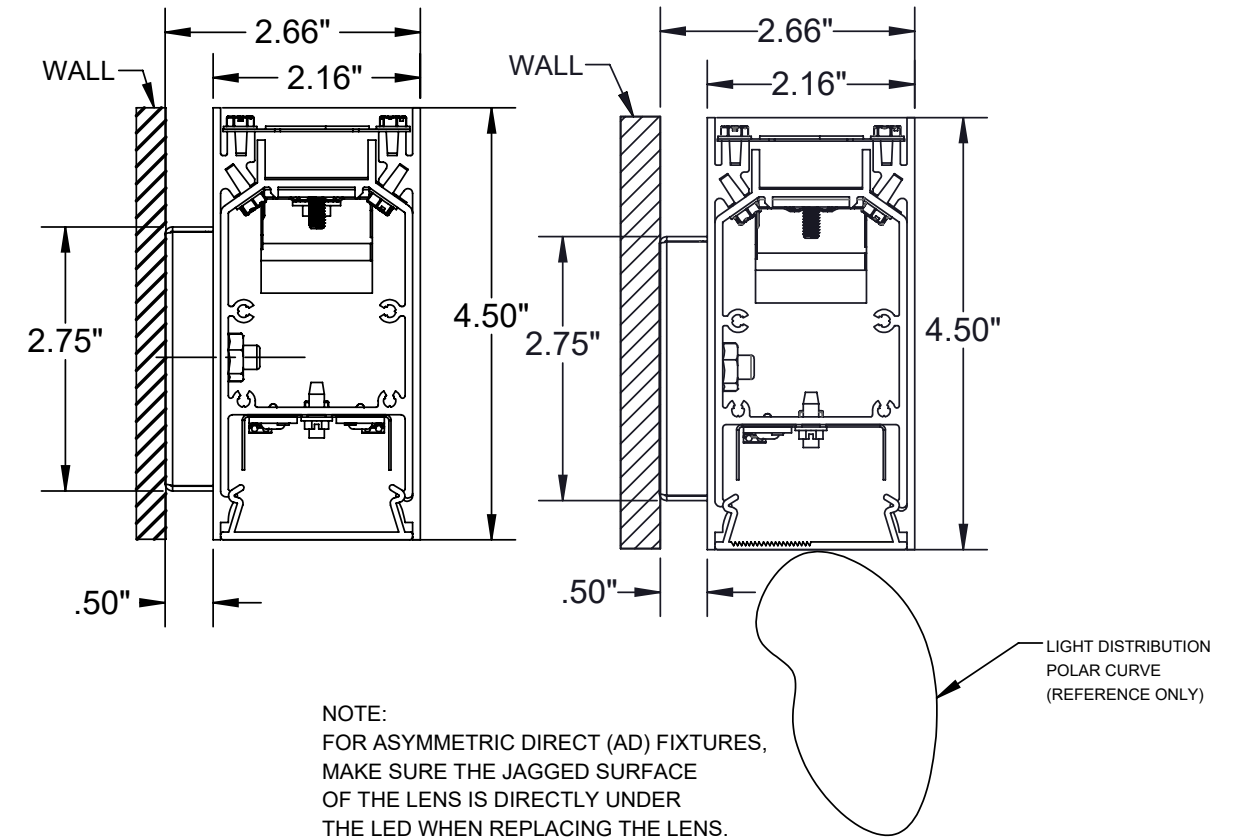


○ = 2" DIA ELECTRICAL FEED HOLE
 ○ = 5/16" X 1 13/32 LG MOUNTING SLOTS



GENERAL NOTES: (READ SHEETS COMPLETELY BEFORE STARTING)

1. LEAVE PROTECTIVE WRAPPING ON FIXTURE(S) UNTIL START OF INSTALLATION.
2. FIXTURES ARE PROVIDED WITH FACTORY-INSTALLED BRANCH CIRCUIT WIRING. REFER TO 510401 SUPPLEMENTAL INSTRUCTION SHEET WHEN MAKING CONNECTIONS.
3. WALL BRACKET(S) (SHIPPED SEPARATELY) SECURE FIXTURE ONTO FINISHED WALL SURFACE. USE TWO BRACKETS FOR 36", 48", 60", 72", 96" FIXTURES AND ONE BRACKET FOR 24" FIXTURE.
4. APPROXIMATE WEIGHT OF FIXTURE IS 3.50 LBS PER FOOT OF LENGTH.

TOOLS REQUIRED

SCREWDRIVER OR 1/4" HEX DRIVER/SOCKET
 7/16" HEX DRIVER/SOCKET

SUPPLIED BY INSTALLER

1

SHIM (IF NECESSARY)
WALL REF.
STRAIGHT WALL BRACKET

MOUNT WALL BRACKET(S) ALONG A STRAIGHT LINE PER DIMENSIONS SHOWN IN SIDE VIEW ON PAGE 1. IF INSTALLING ROW, REFER TO TOP VIEW ON PAGE 1 AND THE ABOVE ILLUSTRATION. IF REQUIRED, USE SHIMS BETWEEN WALL SURFACE AND BACK OF BRACKETS.

2

END CAP
FIXTURE

REMOVE THE END CAP BY PULLING END CAP TO DISENGAGE MAGNETS AND LIFT UP TO DISENGAGE FROM TAB ON END CAP PLATE.
FOR INDIVIDUAL FIXTURE, DO SO AT BOTH ENDS. FOR ROW, DO SO AT NEAR END OF 1ST FIXTURE AND FAR END OF LAST FIXTURE.

3

LENS REMOVAL

FIXTURE
LENS

TO REMOVE, PULL LENS DOWN TO DISENGAGE LENS FROM FIXTURE. FOR INDIVIDUAL FIXTURE, REMOVE ONE END CAP PER STEP 2

4

FIXTURE
TETHER
LED REFL ASSEMBLY
LED REFL ASSEMBLY SCREW

REMOVE LED REFLECTOR MODULE(S) BY REMOVING (2) SCREWS. ALLOW MODULES TO HANG ON TETHERS.

5

INTERIOR OF HOUSING
1/4-20 HEX NUT
(PARTS HIDDEN)

LIFT AND MOUNT FIXTURE ONTO WALL BRACKET(S). USE 1/4-20 HEXHEAD NUTS PROVIDED. IF INSTALLING ROW, DO SO FOR 1ST FIXTURE ONLY.

6

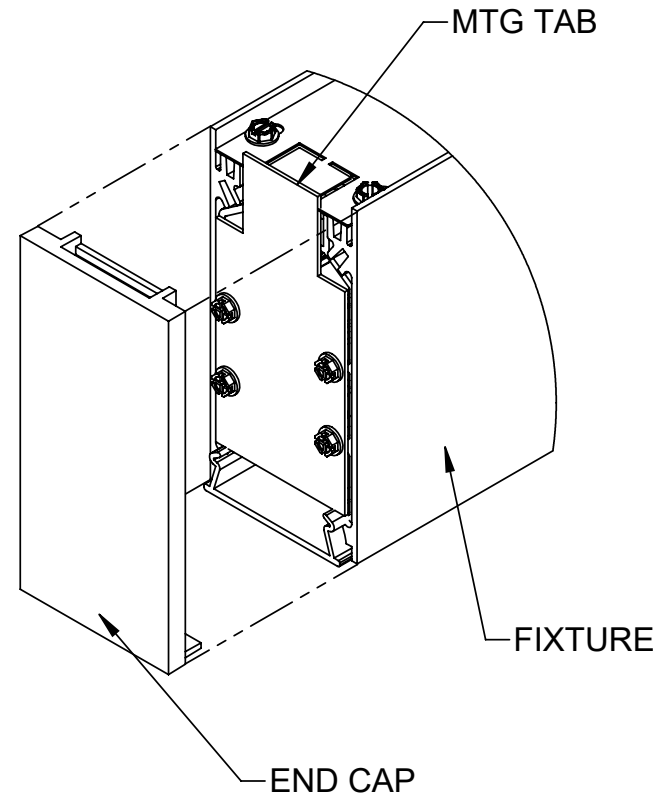
MOUNT NEXT FIXTURE IN ROW. AT FIXTURE JOINT, ALIGN AND INSERT EXTRUSION BRACKET OF MALE FIXTURE INTO ADJOINING FIXTURE BEFORE SECURING JOINT USING THE 5/16-18 4.5" CARRIAGE BOLT TO SECURE FIXTURES TOGETHER. ATTACH 5-16-18 FLANGE NUT ON OTHER SIDE OF JOINT AS SHOWN. ALIGN SEAMS BEFORE FULLY TIGHTENING NUT.

FIXTURE
FLANGE NUT
EXTRUSION BRACKET, MALE FIXTURE
CARRIAGE BOLT
FIXTURE
EXTRUSION BRACKET, FEMALE FIXTURE

BRING ELECTRICAL FEED INTO FIXTURE WIREWAY AND MAKE WIRING CONNECTIONS. FOR ROW, WIRING CAN BE BROUGHT THROUGH ENDS AT EACH JOINT.

7

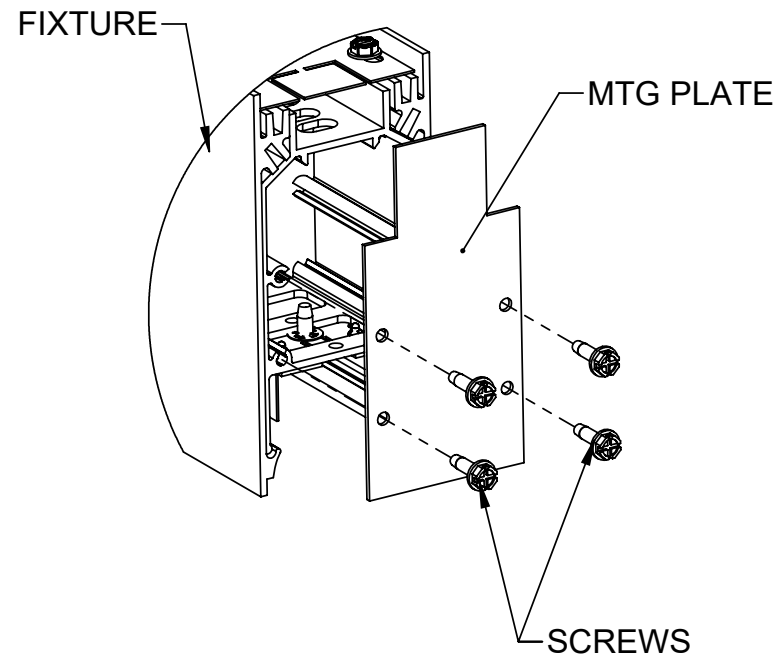
END CAP REMOVAL



REMOVE THE END CAP BY PULLING END CAP TO DISENGAGE MAGNETS AND LIFT UP TO DISENGAGE FROM TAB ON END CAP PLATE.
FOR INDIVIDUAL FIXTURE, DO SO AT BOTH ENDS. FOR ROW, DO SO AT NEAR END OF 1ST FIXTURE AND FAR END OF LAST FIXTURE.

8

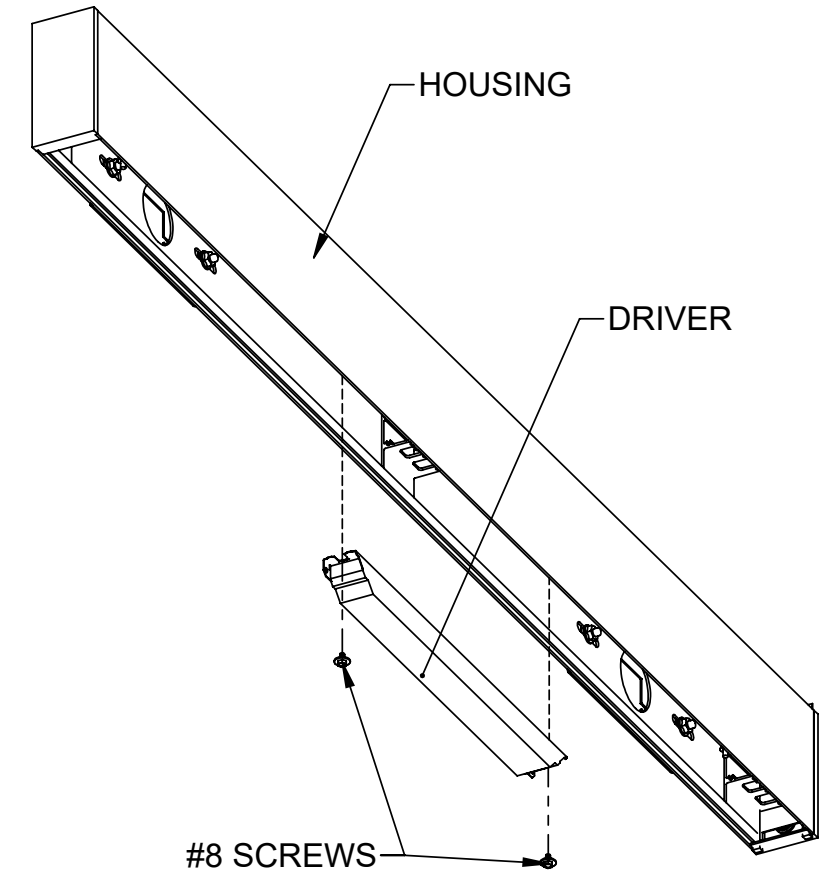
MTG PLATE REMOVAL



TO REMOVE END CAP MOUNTING PLATE, REMOVE THE (4) #6-32 MACHINE SCREWS SHOWN ABOVE.

9

DRIVER REMOVAL



BEFORE REMOVING DRIVER SEE STEPS 1 AND 2 FOR LENS AND LED REFLECTOR ASSEMBLY REMOVAL. REMOVE THE (2) SCREWS AS SHOWN AND REMOVE DRIVER.