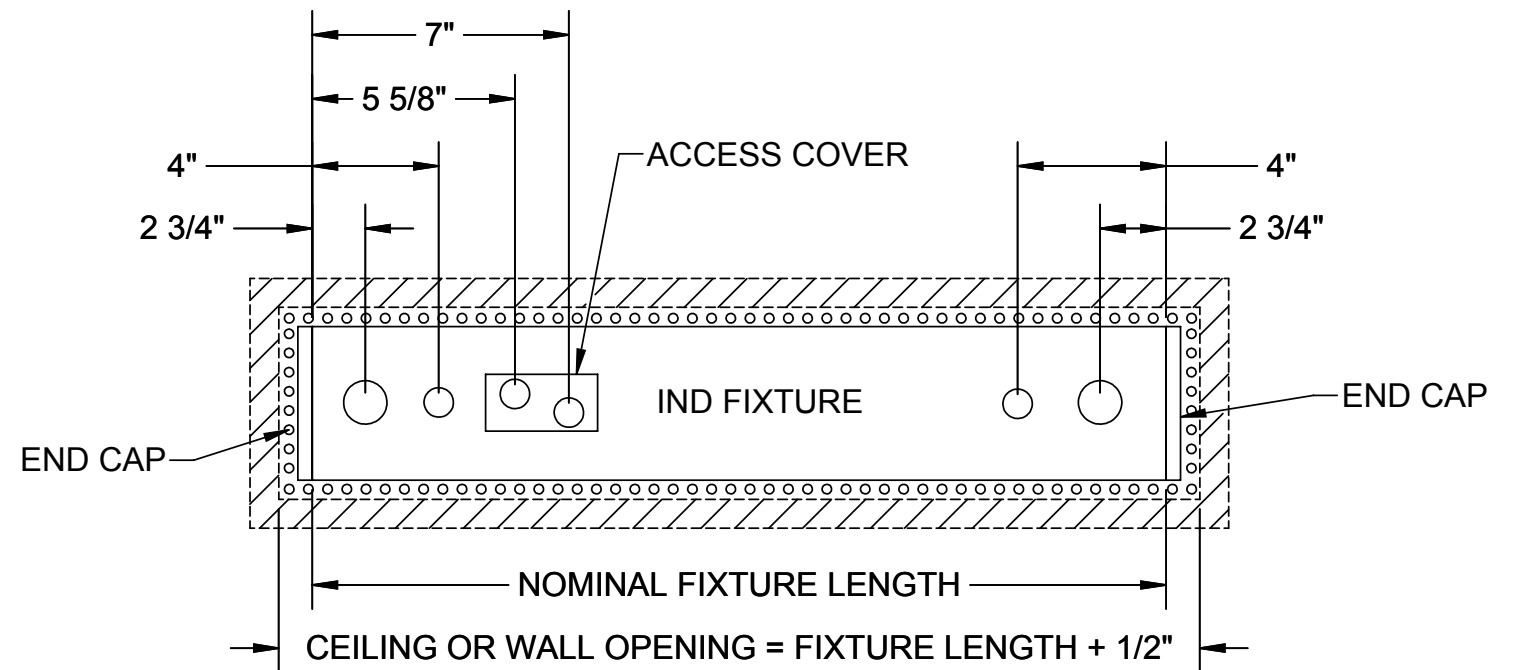
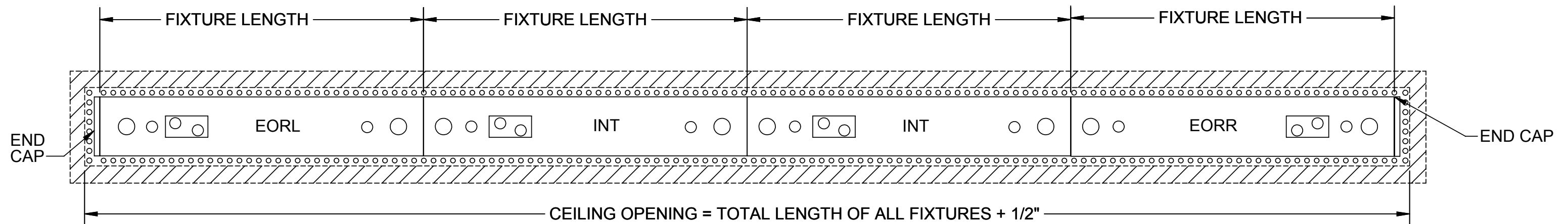


2L-PT CROSS SECTION

THIS 2" DIMENSION IS CRITICAL TO MAINTAIN THROUGH THE WHOLE FIXTURE LENGTH. THIS IS THE INSIDE DIMENSION OF HOUSING WHERE BOTTOM OF SNAP-FIT LENS SITS



TOP VIEW - INDIVIDUALLY MOUNTED RECESSED FIXTURE



TOP VIEW - ROW MOUNTED RECESSED FIXTURE

GENERAL NOTES:

1. LEAVE PROTECTIVE WRAPPING MATERIAL ON FIXTURE UNTIL FIXTURES ARE MOUNTED. THIS WILL PROTECT FINISH FROM DAMAGE
2. FIXTURES ARE SUPPLIED WITH FACTORY INSTALLED BRANCH CIRCUIT WIRING. REFER TO SUPPLEMENTAL INSTRUCTION SHEET FOR MAKING CONNECTIONS.
3. FIXTURES ARE MOUNTED IN A DRYWALL FRAMED PLASTER CEILING SUPPORTED WITH DRYWALL SCREWS (SUPPLIED BY INSTALLER) INSERTED THROUGH HOLES IN FIXTURE SPACKLE TRIMS AND END CAPS. DRYWALL SCREWS ARE PLACED IN HOLES AT BOTH ENDS OF SPACKLE TRIM AND APPROXIMATELY EVERY 12" ALONG LENGTH OF FIXTURE. MINIMUM OF 2 DRYWALL SCREWS REQUIRED IN EACH END CAP TRIM.

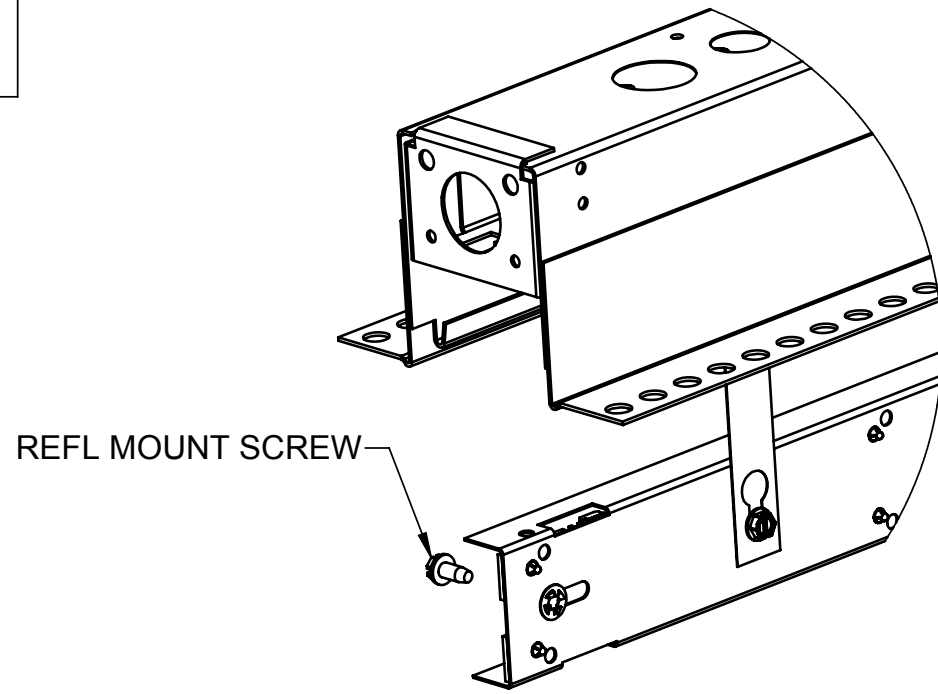
TOOLS REQUIRED

- SCREWDRIVER OR 1/4" HEX DRIVER/SOCKET
- 9/16" HEX DRIVER/SOCKET OR WRENCH
- SAW TO FIELD CUT PLASTIC DIFFUSERS

SUPPLIED BY INSTALLER

- DRYWALL SCREWS

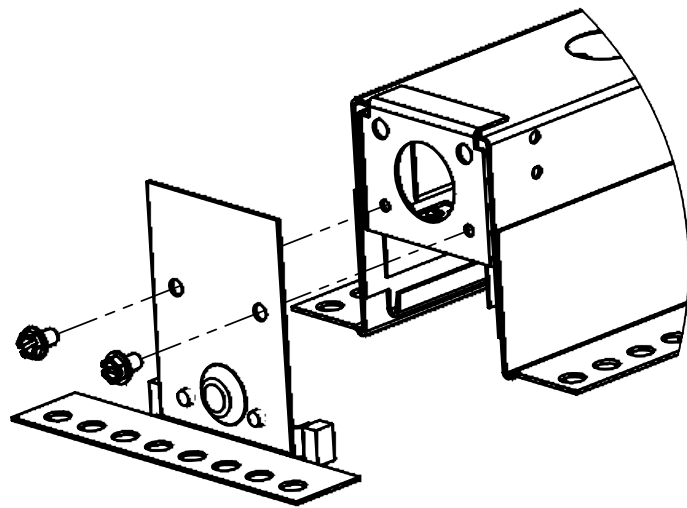
1



REMOVE REFLECTOR ASSEMBLY AND LET REFLECTOR ASSEMBLY HANG ON TETHERS

NOTE: SCREW WILL NOT COMPLETELY REMOVE, THERE IS A PUSH NUT ATTACHED TO THE BACKSIDE OF REFLECTOR

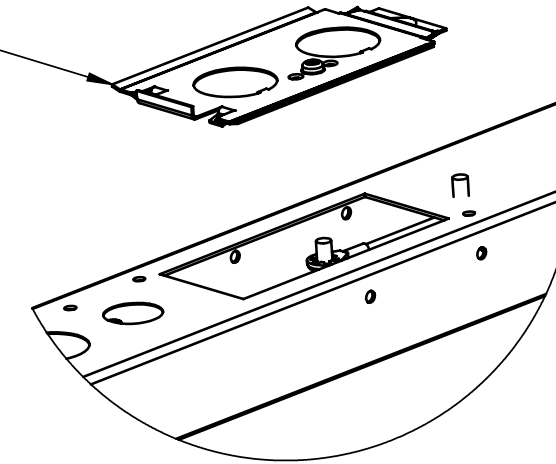
3



MOUNT END CAP ASSEMBLY (SHIPPED SEPERATELY) TO THE END OF ROW SIDE OF FIRST FIXTURE USING (2) #8 SHEET METAL SCREWS.
***FOR INDIVIDUAL FIXTURES, MOUNT BOTH END CAP ASSEMBLIES.**

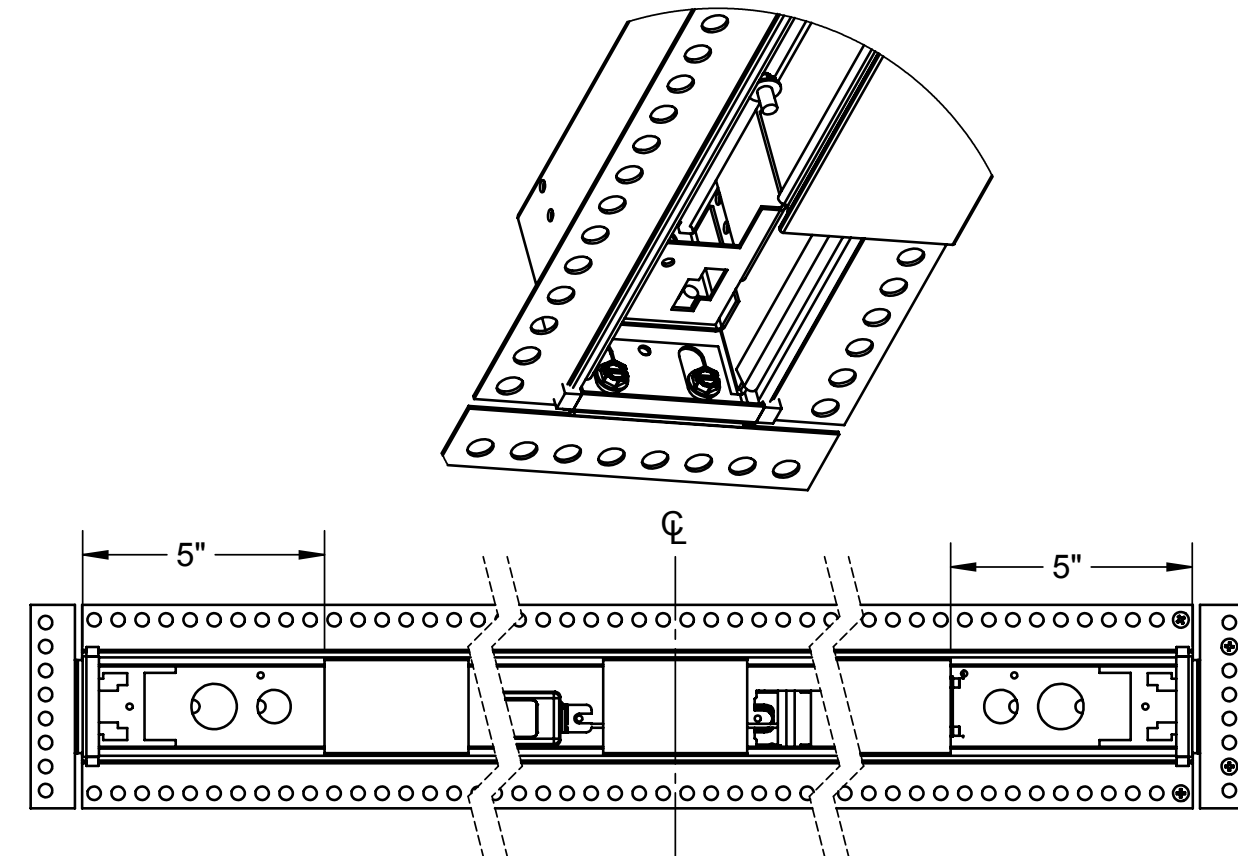
2

ACCESS COVER



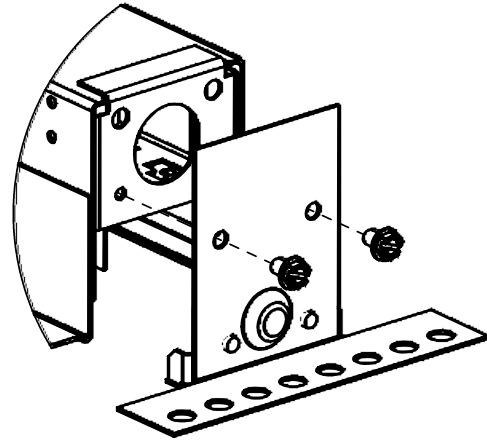
REMOVE ACCESS COVER FROM TOP OF FIRST FIXTURE IN ROW (OR INDIVIDUAL FIXTURE). REMOVE A 7/8" FEED KO FROM ACCESS COVER. REACH INTO OPENING AND PULL FEED WIRING THROUGH.
 NOTE: 2' FIXTURES WILL NOT HAVE ACCESS COVER. USE 7/8" KO

4



ENSURE 3" DIFFUSER PIECES ARE INSTALLED (SHIPPED INSTALLED). ONE IN THE CENTER AND ONE 5" IN FROM EACH END. 6' AND 8' FIXTURES WILL HAVE 4 PIECES IN KIT. SPACE EQUALLY. THIS WILL INSURE THAT THE FIXTURE DOES NOT PINCH DURING INSTALL AND THE DIFFUSER WILL FIT PROPERLY.

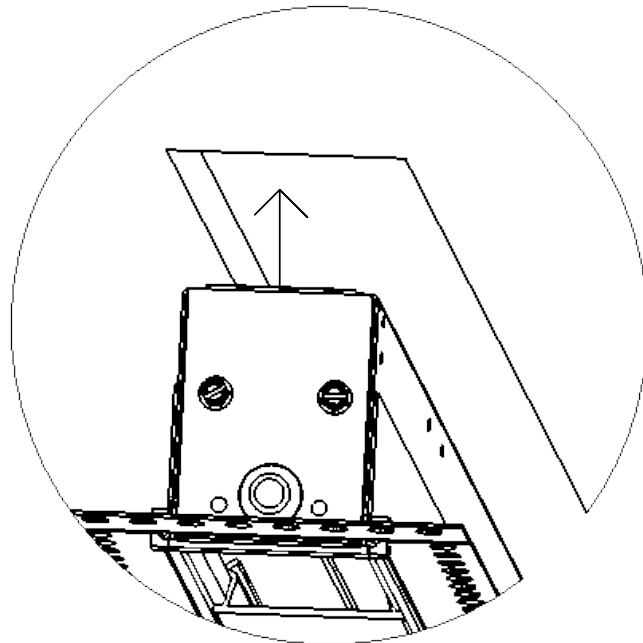
5



ATTACH END CAP ASSEMBLY TO LAST FIXTURE IN ROW USING (2) #8 SHEET METAL SCREWS

NOTE* SKIP THIS STEP FOR ALL INTERMEDIATE FIXTURES

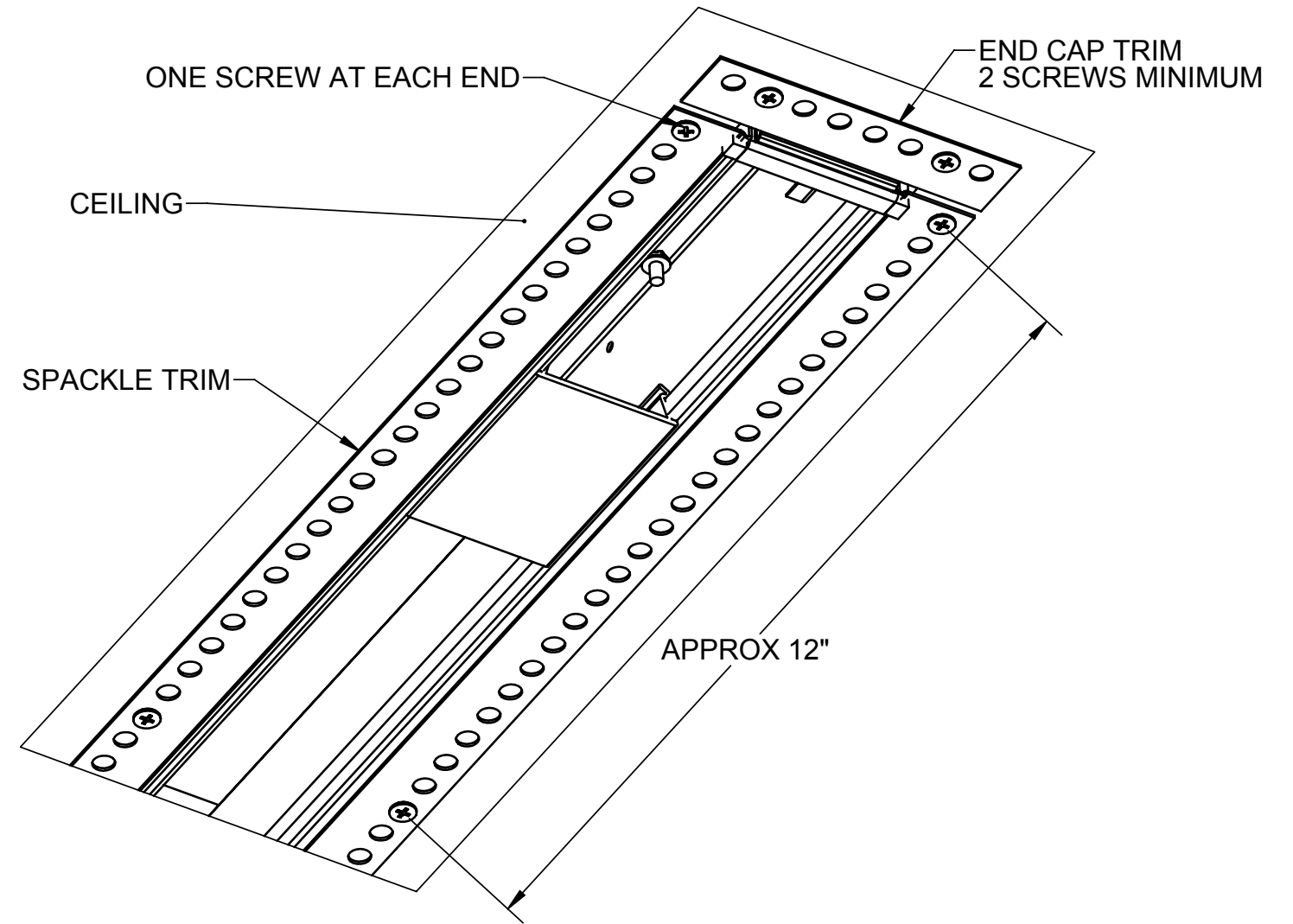
6



LIFT FIXTURE UP NEAR CEILING OPENING AND BRING ELECTRICAL FEED INTO FIXTURE WIREWAY THROUGH ACCESS COVER.

MAKE ALL ELECTRICAL CONNECTIONS IN FIXTURE WIREWAY AND RE-INSTALL ACCESS COVER PLATE.

7

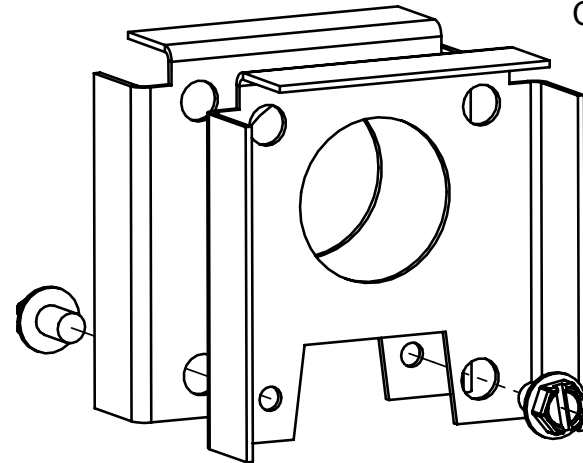
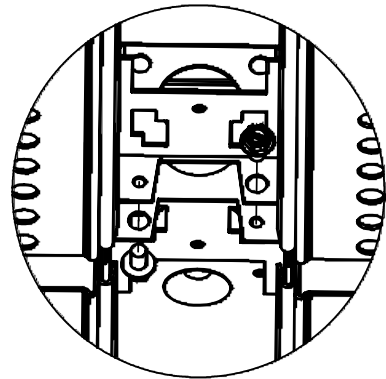


MOUNT FIXTURE(S) TO DRYWALL FRAMED PLASTER CEILING WITH DRYWALL SCREWS (SUPPLIED BY INSTALLER). DRYWALL SCREWS ARE PLACED IN HOLES AT BOTH ENDS OF SPACKLE TRIM AND APPROXIMATELY EVERY 12" ALONG LENGTH OF FIXTURE. A MINIMUM OF TWO SCREWS ARE REQUIRED THROUGH SPACKLE END CAP TRIM.

NOTE: FOR INDIVIDUAL AND END OF ROW FIXTURES, SKIP TO STEP 9

NOTE: 3" DIFFUSER PIECES CAN BE REMOVED AFTER FIXTURE IS SCREWED INTO CEILING

8



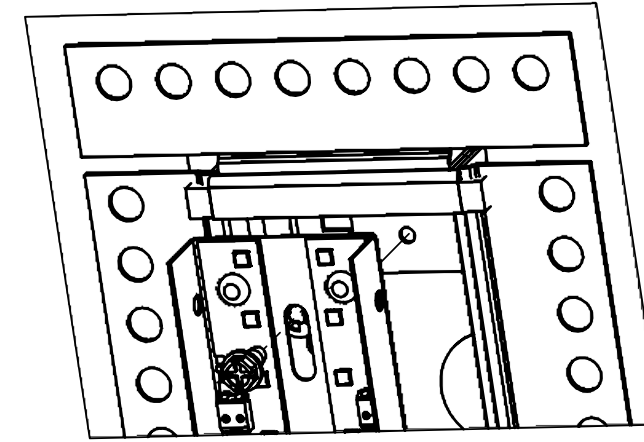
ALL OTHER COMPONENTS REMOVED FOR CLARITY

REPEAT STEPS 1-7 (OMIT STEPS 3 & 5 FOR ALL INTERMEDIATE FIXTURES) LOOSELY BOLT ADJOINING FIXTURE TO THE PREVIOUS FIXTURE THROUGH BOTH END HEADERS AS SHOWN ABOVE. LEVEL EACH FIXTURE AND ALIGN SEAMS AT ROW JOINTS BEFORE TIGHTENING SCREWS.

NOTE: FOLLOW ORIENTATION OF SCREW HEADS AS SHOWN

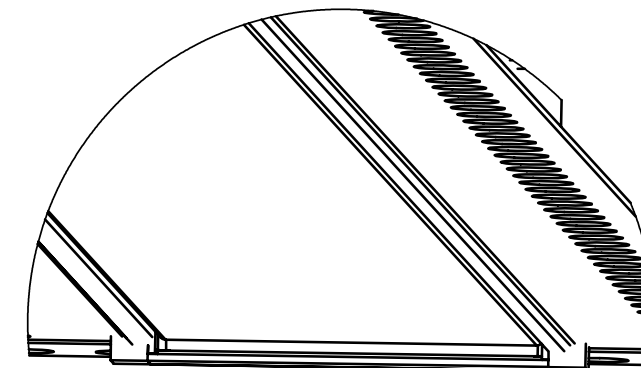
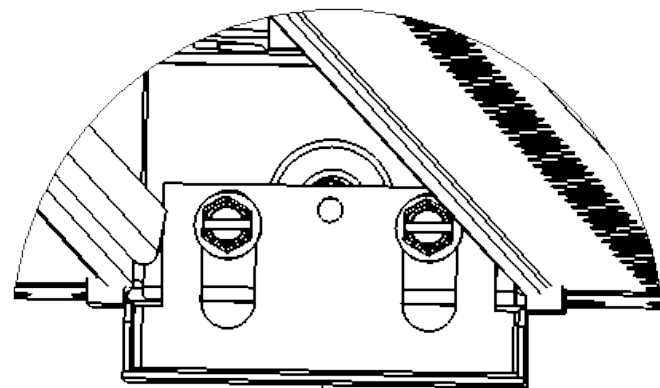
BRANCH CIRCUIT WIRES CAN BE ROUTED THROUGH 7/8" HOLE IN END HEADERS.

9



REPLACE ALL LED MODULES

DIFFUSER INSTALLATION



FOR INDIVIDUAL FIXTURES, REACH INSIDE AND PULL LENS RETAINER BRACKET DOWN ON BOTH SIDES. FIT DIFFUSER INSIDE AND SNAP STRAIGHT UP INTO FIXTURE BODY. PUSH LENS RETAINER BRACKETS BACK UP.

FOR ROW MOUNTED FIXTURES, LAST DIFFUSER IN ROW MUST BE FIELD CUT WITHIN A 1/8" TOLERANCE

NOTE* FOR ANY ROWS THAT INCLUDE AN EMERGENCY OR SENSOR IN THE MIDDLE OF THE ROW, THERE ARE SPECIFIC DIFFUSERS THAT **MUST** BE INSTALLED WITH THEIR CORRESPONDING FIXTURES. BOTH (OR ALL) BORDERING DIFFUSERS MUST BE FIELD CUT.