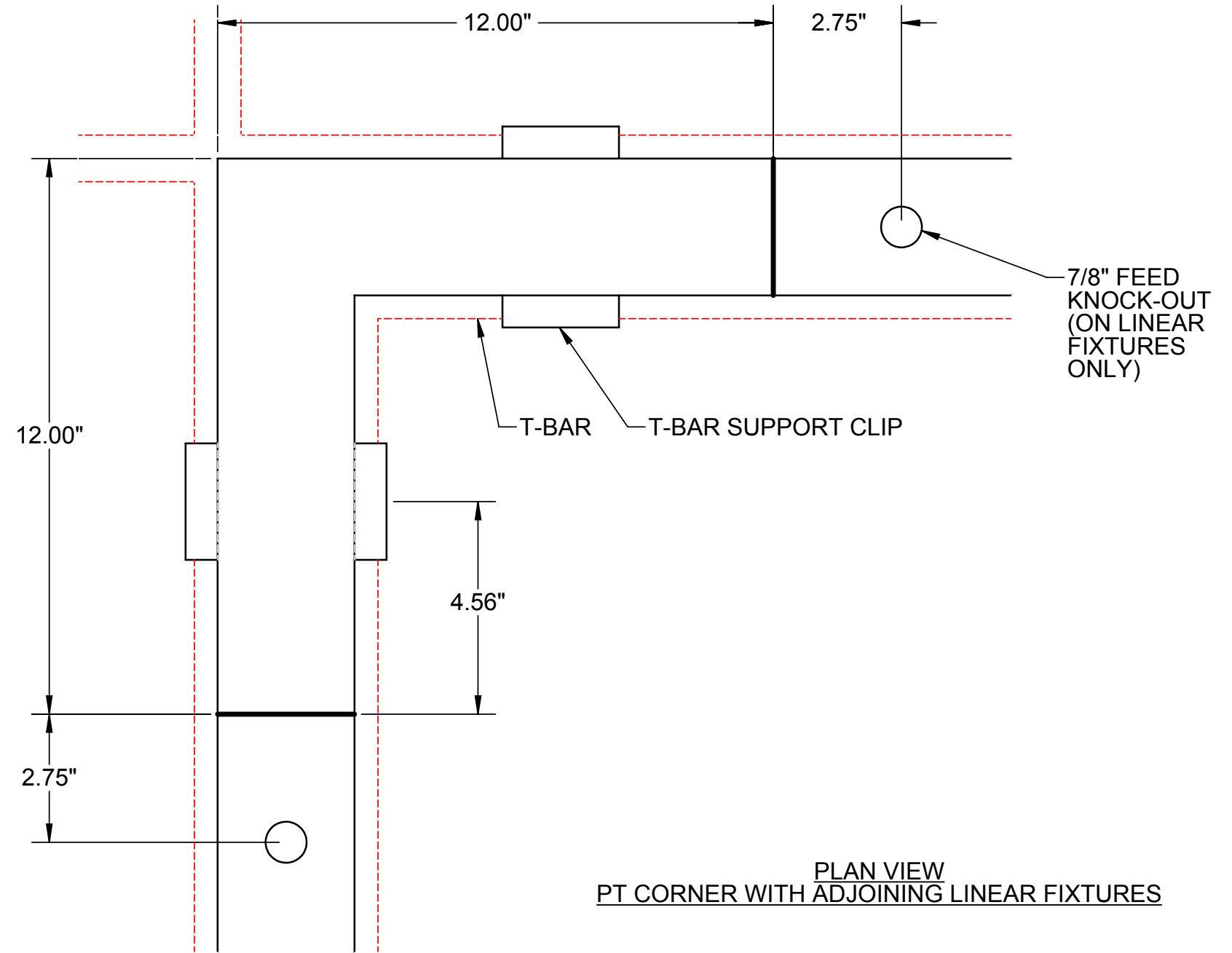


TOP VIEW - PLASTER TRIM CORNER FIXTURE



PLAN VIEW
PT CORNER WITH ADJOINING LINEAR FIXTURES

GENERAL NOTES: (READ SHEETS COMPLETELY BEFORE STARTING)

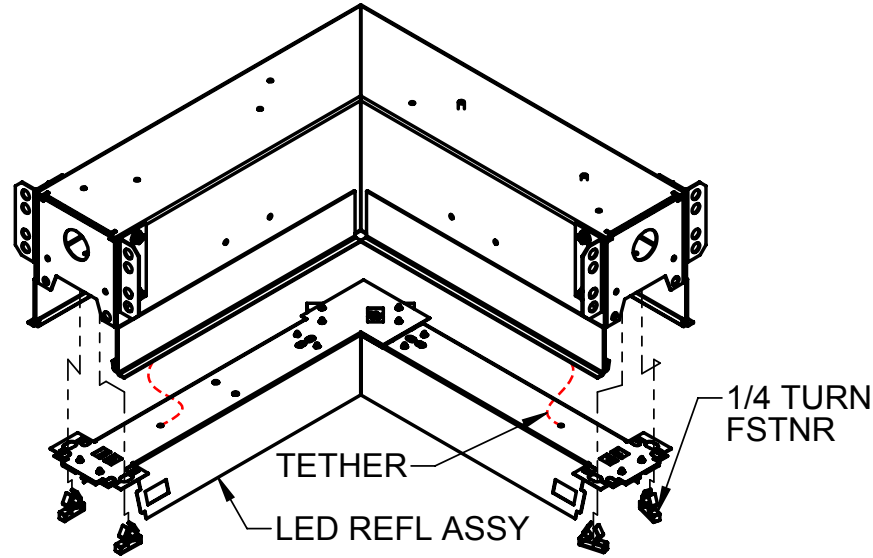
1. **USE THIS INSTRUCTION SHEET IN CONJUNCTION WITH INSTRUCTION SHEET 510640.**
2. LEAVE PROTECTIVE WRAPPING MATERIAL ON FIXTURE(S) UNTIL START OF INSTALLATION TO PROTECT FINISH FROM DAMAGE.
3. FIXTURES ARE SUPPLIED WITH FACTORY-INSTALLED BRANCH CIRCUIT WIRING. REFER TO SUPPLEMENTAL INSTRUCTION SHEET WHEN MAKING CONNECTIONS.
4. ALL CEILING T-BARS MUST BE INSTALLED PRIOR TO INSTALLATION OF FIXTURES.

TOOLS REQUIRED

- SCREWDRIVER/DRILL
- 7/16" NUT DRIVER

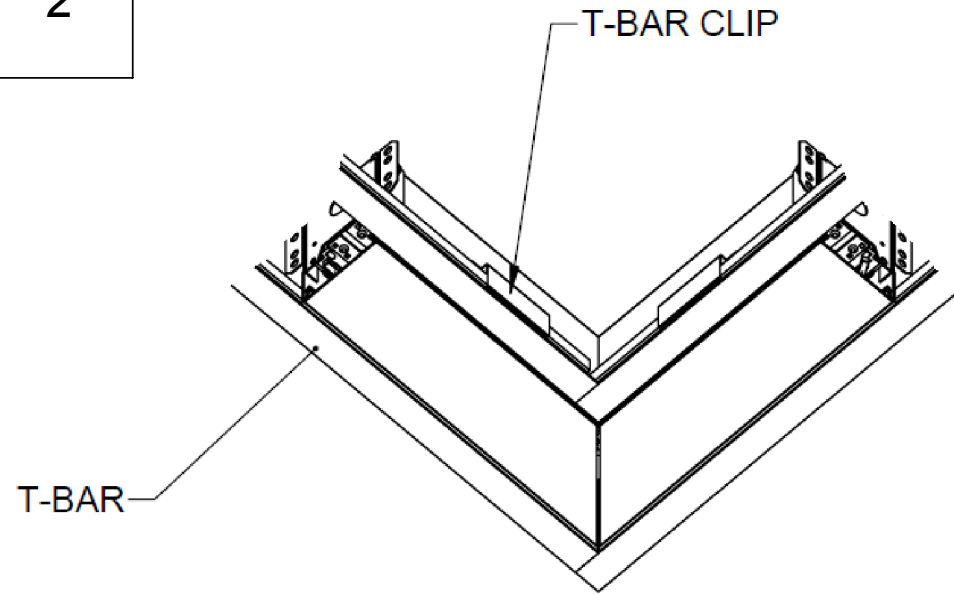
SUPPLIED BY INSTALLER

1 INSTALL ONE OF THE LINEAR FIXTURES ADJACENT TO THE CORNER PER INSTRUCTION SHEET 510640.



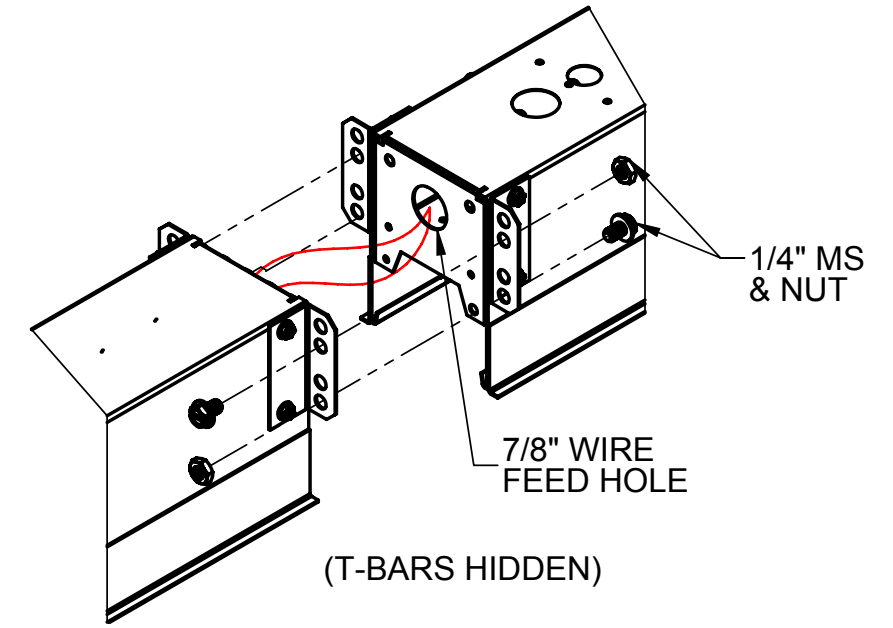
REMOVE LED REFLECTOR MODULES OF CORNER FIXTURE BY REMOVING 1/4 TURN FASTENERS. ALLOW MODULES TO HANG DOWN ON NYLON TETHERS.

2



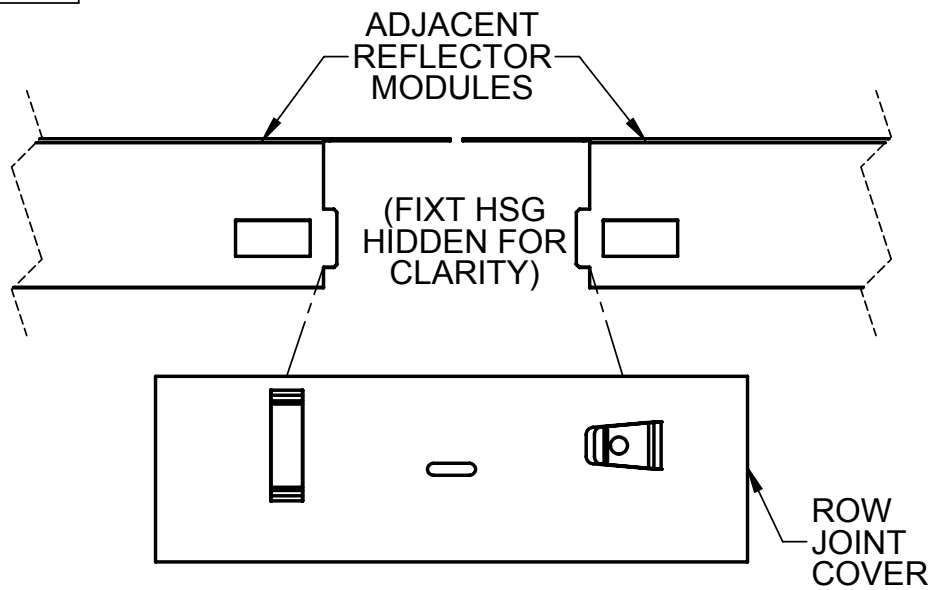
RAISE CORNER FIXTURE UP INTO CEILING PLENUM AND SEAT SIDE RAILS ONTO MAIN T-BARS. ATTACH T-BAR RETAINING CLIPS (SHIPPED SEPARATELY) TO EACH SIDE RAIL USING (2) #8 SHEET METAL SCREWS. SEE INSTRUCTION SHEET 510640 FOR DETAILS.

3



JOIN CORNER FIXTURE WITH MOUNTED LINEAR FIXTURE BY INSERTING (4) 1/4-20 X 3/8" LONG MACHINE SCREWS AND NUTS THROUGH ROW MOUNTING BRACKETS. ROUTE BRANCH CIRCUIT WIRING VIA FEED HOLE AT FIXTURE JOINT. TIGHTEN SCREWS AFTER ENSURING THAT FIXTURES ARE LEVEL AND ALIGNED.

4 INSTALL LINEAR FIXTURE AT OTHER SIDE OF CORNER. REFER TO INSTRUCTION SHEET 510640. JOIN WITH CORNER FIXTURE AS DESCRIBED IN STEP 4.



REPLACE LED REFLECTOR MODULE. CLEAN FIXTURE EXTERIORS WITH A GENERAL WINDOW CLEANER. ATTACH ROW JOINT COVER PLATES, AS SHOWN, AT BOTH FIXTURE JOINTS.

5

SNAP DIFFUSERS INTO BOTTOM OF HOUSING AS SHOWN. TO REMOVE, INSERT SCREWDRIVER OR FLAT HEAD PRY TOOL INTO SIDE OF HOUSING AND PULL DOWN.

