

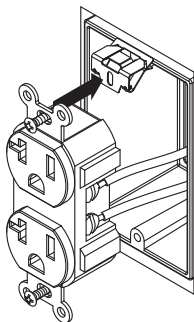


## Plastic Box Repair Clip Installation Instructions

Turn off the power at the circuit breaker (or fuse box) before following instructions below. Remove face plate and unscrew receptacle from box. Do not restore power until installation is complete

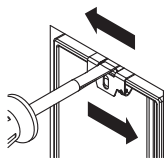
①

Firmly push in the "Repair Clip" all the way over the edge of the box as shown.



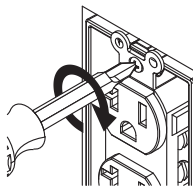
②

Insert a flat screwdriver inside the "Repair Clip" opening and slide it left or right to align with the stripped hole.



③

Reattach the device using the screws provided in the bag.



8988RAC\_BG\_REV-2

