



Kim Archetype® and Entablature® Strike Optic: Installation Instructions



WARNING: Fixtures must be grounded in accordance with local codes or the National Electrical Code. Failure to do so may result in serious personal injury.



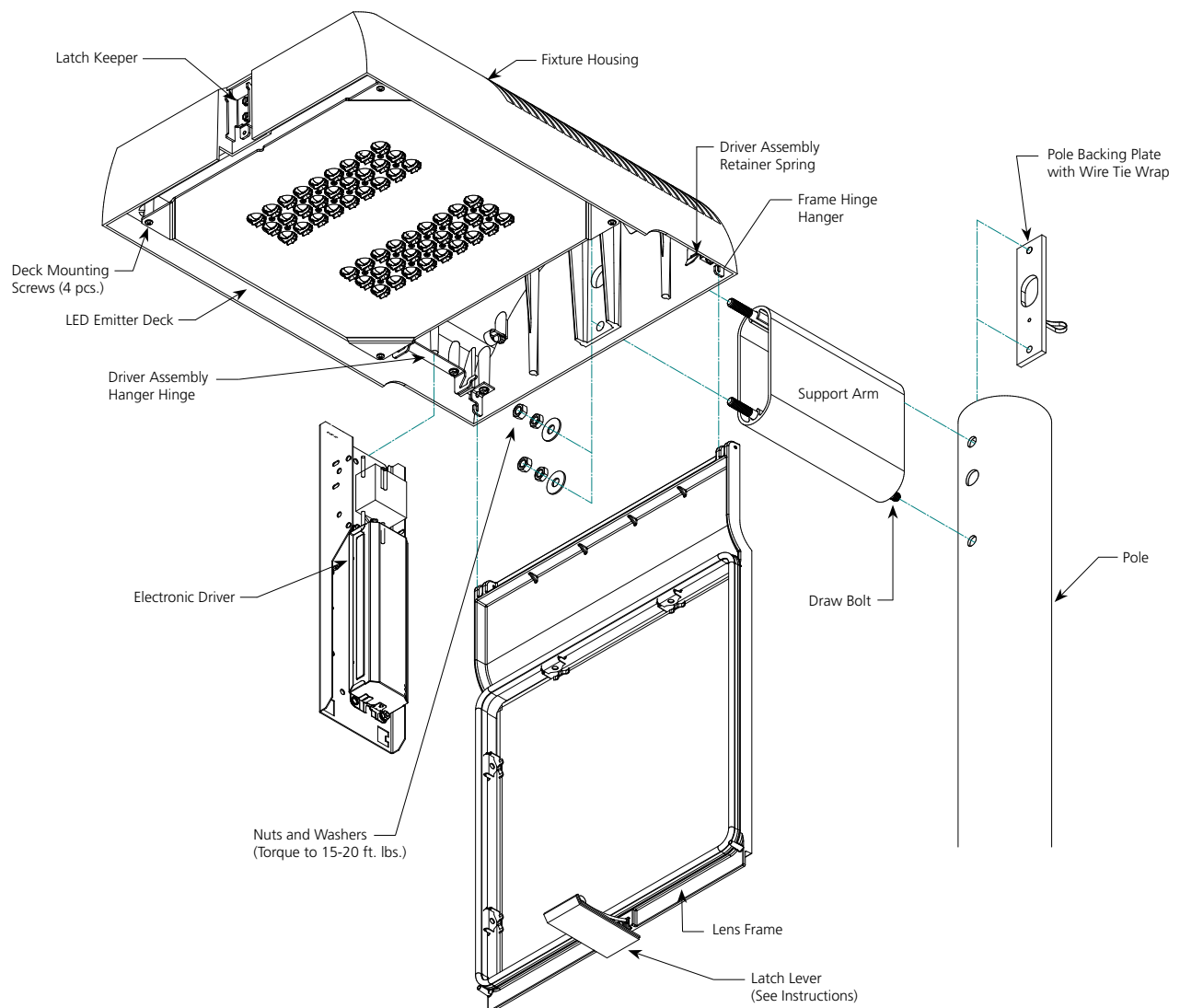
WARNING: RISK OF FIRE OR ELECTRICAL SHOCK. Install this kit only in the luminaires that have the construction features and dimensions shown in the photographs and/or drawings. Luminaire's wiring, power supply, or other electrical parts may be damaged when drilling for installation of retrofit assembly hardware. Inspect all wiring and components for damage.

MAINTENANCE: A regularly scheduled maintenance program should be established to retain optimum light output and reduce heat retention. Dusting with a soft, clean, dry cloth is normally sufficient for the reflector. Any accumulation of dust or dirt should be removed regularly from both sides of the lens during relamping (using ammonia water). Do Not use alkaline or acid cleaners on reflector surfaces.

NOTE: All wiring must be done by a qualified electrician.

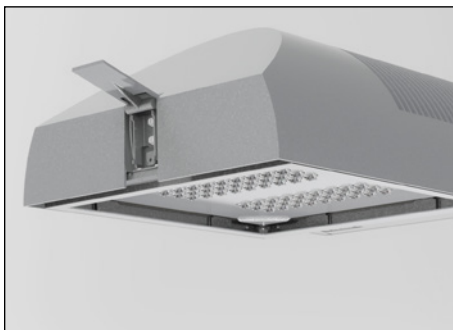
KEEP THIS SHEET FOR FUTURE REFERENCE.

INSTALLATION INSTRUCTIONS: Make certain electrical supply is **OFF** before starting fixture.



Kim Archetype® and Entablature® Strike Optic: Installation Instructions

LATCH LEVER OPENING/CLOSING: AR/SAR

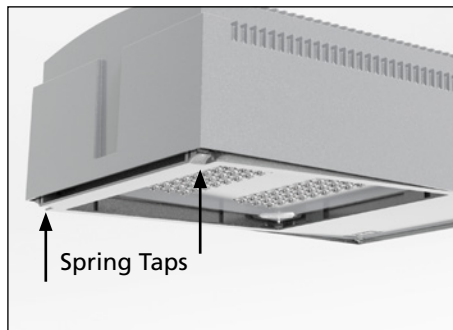


1. Push up on frame and hold.
2. Pull latch lever up and out of keeper to open or on to keeper to close.

NOTE: If latch has tamper-resistant screw, use Allen wrench to remove.

CAUTION: Always hold lens frame. Damage may occur if lens frame is allowed to swing freely.

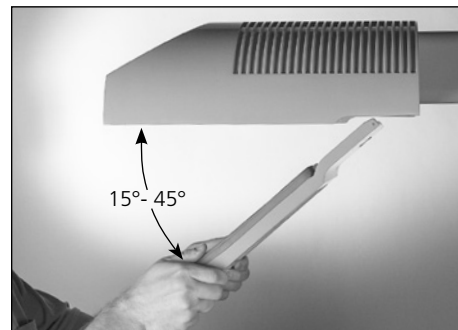
THUMB LATCH: OPENING/CLOSING: ET/SET



1. While holding lens frame with both hands, push both spring tabs simultaneously outward using thumbs.

CAUTION: Always hold lens frame. Damage may occur if lens frame is allowed to swing freely.

FRAME REMOVAL/INSTALLATION: AR/SAR AND ET/SET



1. Open latch
2. Carefully move lens frame to a 15° to 45° angle with fixture to unhook from hinge hanger

NOTE: Frame can only be removed or attached when located between 15° and 45° angle with fixture. AR/SAR is shown..

FIXTURE ATTACHMENT TO POLE:

Tools Required:

- Flat Blade Screwdriver
- 3/32" Allen Wrench
- Torque Wrench
- Ratchet with N" 6 or 12 point deep socket



Make certain electrical power is **off** before starting installation.

1. Remove lens frame from fixture (see diagrams at above).
2. Lay pole horizontally on padded supports to protect finish.
3. Pull field wires through pole and out the top. Tie-wrap wires to pole backing plate. Tie field wires in a knot or backloop through tie-wrap.
4. Hold pole backing plate inside pole and thread draw bolts into backing plate. Slide support arm over draw bolts.
NOTE: Arm will have a circular cut end to fit a round pole.
5. Feed fixture wires through arm, pole, backing plate and out pole top. Mount fixture to arm (see diagram on front) using washers and thin jam nuts torqued to 15-20 ft.-lbs. Secure with thick nuts over jam nuts. Make sure fixture is square with pole before raising pole.
6. Connect fixture wires to field wires observing polarity i.e. green-to-ground white-to-common and black-to-voltage.

Optional Wallmount: See Instruction Sheet #95294.

DRIVER INSTALLATION:



Make certain electricity is **off** before starting installation.

1. Grasp assembly with both hands and hook it onto hanger hinges inside the compartment.
2. Join the disconnect plug halves between the EmitterDeck and the driver assembly. Then join the disconnect plug halves between the power lead-in and the driver assembly.
3. Swing the driver assembly into the housing and onto retainer spring tabs (make sure both retainer spring tabs are engaged and assembly is properly seated on hinges).

MAINTENANCE INSTRUCTIONS:  Make certain electricity is **off** before beginning maintenance procedures

1. For opening and closing of the fixture, refer to instructions and diagrams on other side of sheet.
2. A regularly scheduled maintenance program should be established to retain optimum light output and reduce heat retention. Dusting with a soft, clean, dry cloth is normally sufficient for the optics.

Do not use alkaline or acid cleaners on reflector surfaces.

For warranty see <http://www.hubbellighting.com/resources/warranty>