

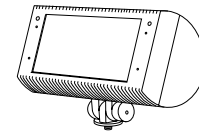


Hubbell  
Lighting, Inc.

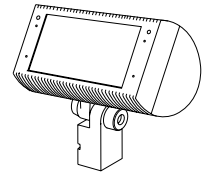


**KIM LIGHTING**

P.O. Box 60080 • 16555 East Gale Ave.  
City of Industry, California 91716-0080  
626/968-5666 • FAX 626/330-3861



AFL10 with  
Standard Swivel



AFL10 with  
Heavy Duty Swivel

## AFL10 Series Mounting Instructions for PT, PT2, SPT, SPM, M2B, and TM2



**WARNING:** Fixtures must be grounded in accordance with local codes or the National Electrical Code. Failure to do so may result in serious personal injury.

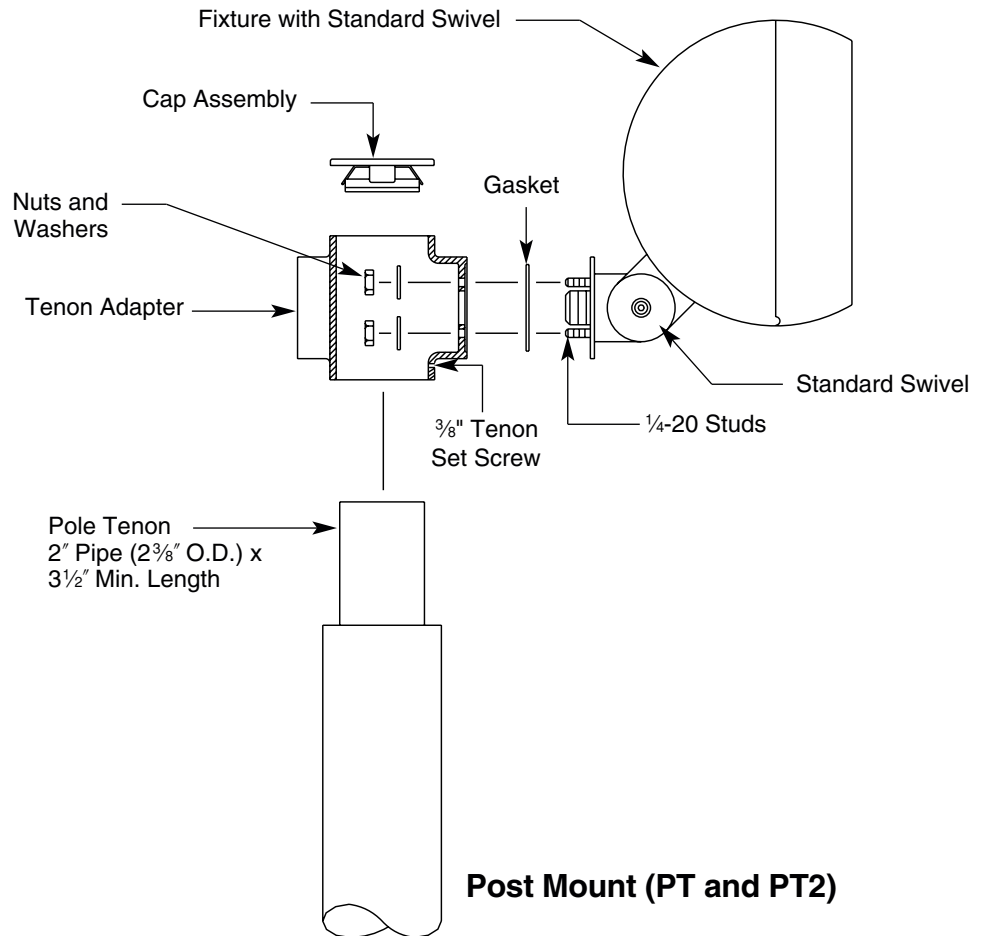
**NOTE:** Mounting options PT, PT2, SPT, SPM, M2B, and TM2 are intended for use only on AFL10 Series fixtures. Components will not support size and weight of large AFL Series (AFL 20 Series).

**CAUTION:** All wiring must be done by a qualified electrician. **KEEP THIS SHEET FOR FUTURE REFERENCE.**

### Post Mount (PT and PT2)

#### Tools Required:

- 3/32" Allen Wrench
- 3/16" Allen Wrench
- 1/8" Allen wrench
- 7/16" Socket and Ratchet



#### STANDARD SWIVEL MOUNTING INSTRUCTIONS:



Make sure electricity is **OFF** before starting installation.

1. Attach 1/4-20 studs to swivel.
2. Install fixture to tenon adapter and torque nuts to 10 foot-pounds.
3. Slide tenon adapter assembly over pole tenon.
4. Orient fixture to desired direction and tighten set screws. Torque set screws to 10 foot-pounds. **To prevent windmilling, remove one tenon screw, drill 3/8" dia. recess in tenon for screwpoint, and replace screw.**
5. Make all wiring connections observing polarity, i.e., green-to-ground, white-to-common, and black-to-voltage.
6. See fixture installation instructions (Part No. 95416) for swivel adjustment.
7. Attach cap assembly.

# AFL10 Series Mounting Instructions

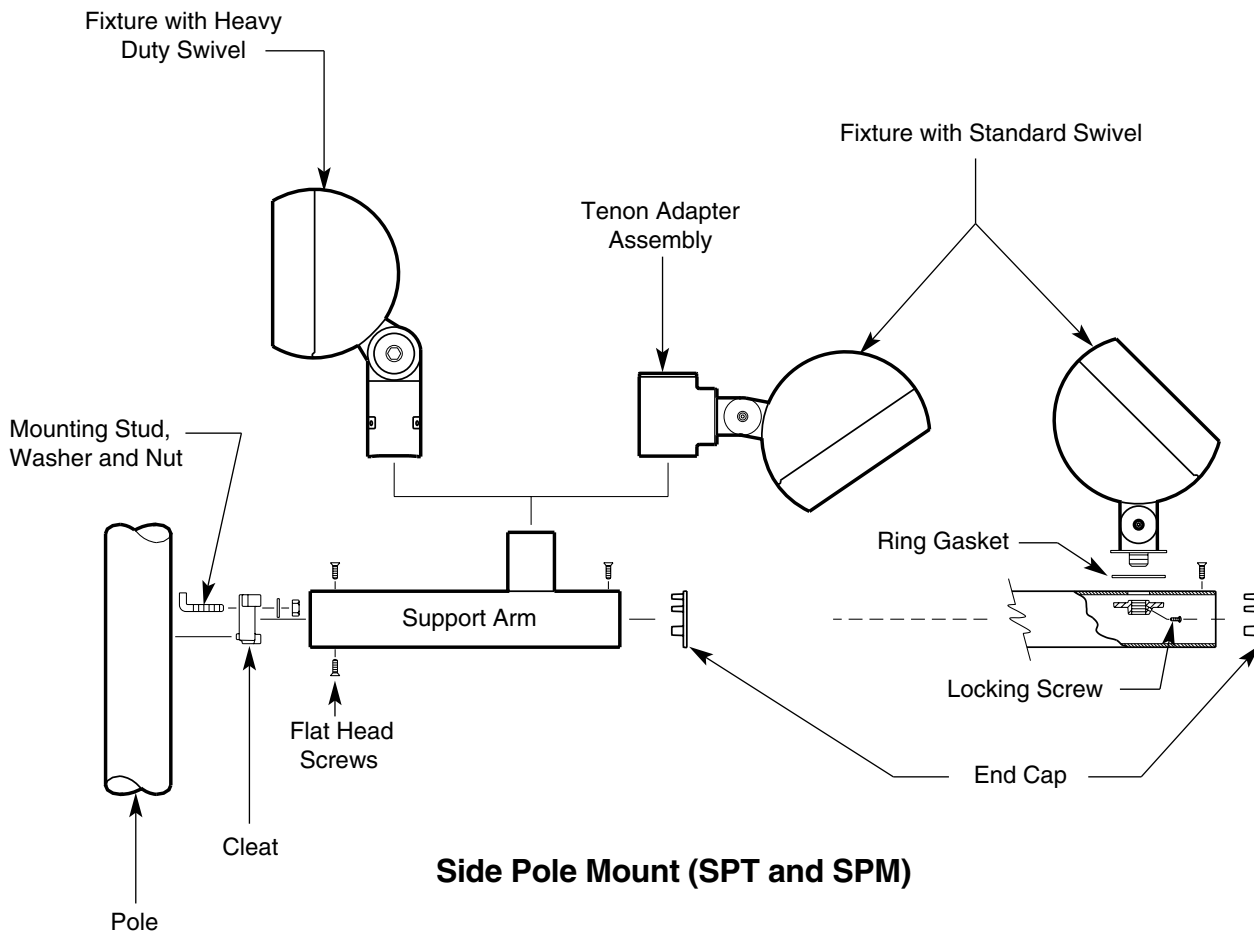
for PT, PT2, SPT, SPM, M2B, and TM2

## Side Pole Mount (SPT and SPM)

**Tools Required:**  3/32" Allen Wrench       9/16" Wrench       1/8" Allen Wrench  
 7/16" Diameter Drill       3/16" Allen Wrench       5/8" Diameter Drill

**STANDARD SWIVEL MOUNTING INSTRUCTIONS:**  Make sure electricity is **OFF** before starting installation.

1. Position hole template on pole (see detail on back), orient to desired position and drill holes. Deburr wireway hole. (For poles by others).
2. Insert mounting stud through cleat. Feed stud through top hole on pole and tighten nut securely. Torque to 15 foot-pounds.
3. Fish wires through wireway.
4. Slide arm over cleat and install (3) flat head screws supplied. Tighten the two top screws to 10 foot-pounds, then tighten bottom screw. For Heavy Duty Swivel **to prevent windmilling, remove one tenon set screw, drill 3/8" dia. recess in tenon for screwpoint, and replace screw.**
5. **For SPT:** Attach fixture to tenon adapter as per Post Mount instructions (see above).  
**For SPM:** Attach fixture to arm as per Twin Mount (**TM2**) instructions (see reverse).



## HEAVY DUTY SWIVEL MOUNTING INSTRUCTIONS:

1. Follow directions for Side Pole Mount Standard Swivel Mounting Instructions (above) and attach fixture as per Twin Mount (**M2B**) instructions (see reverse).

# AFL10 Series Mounting Instructions

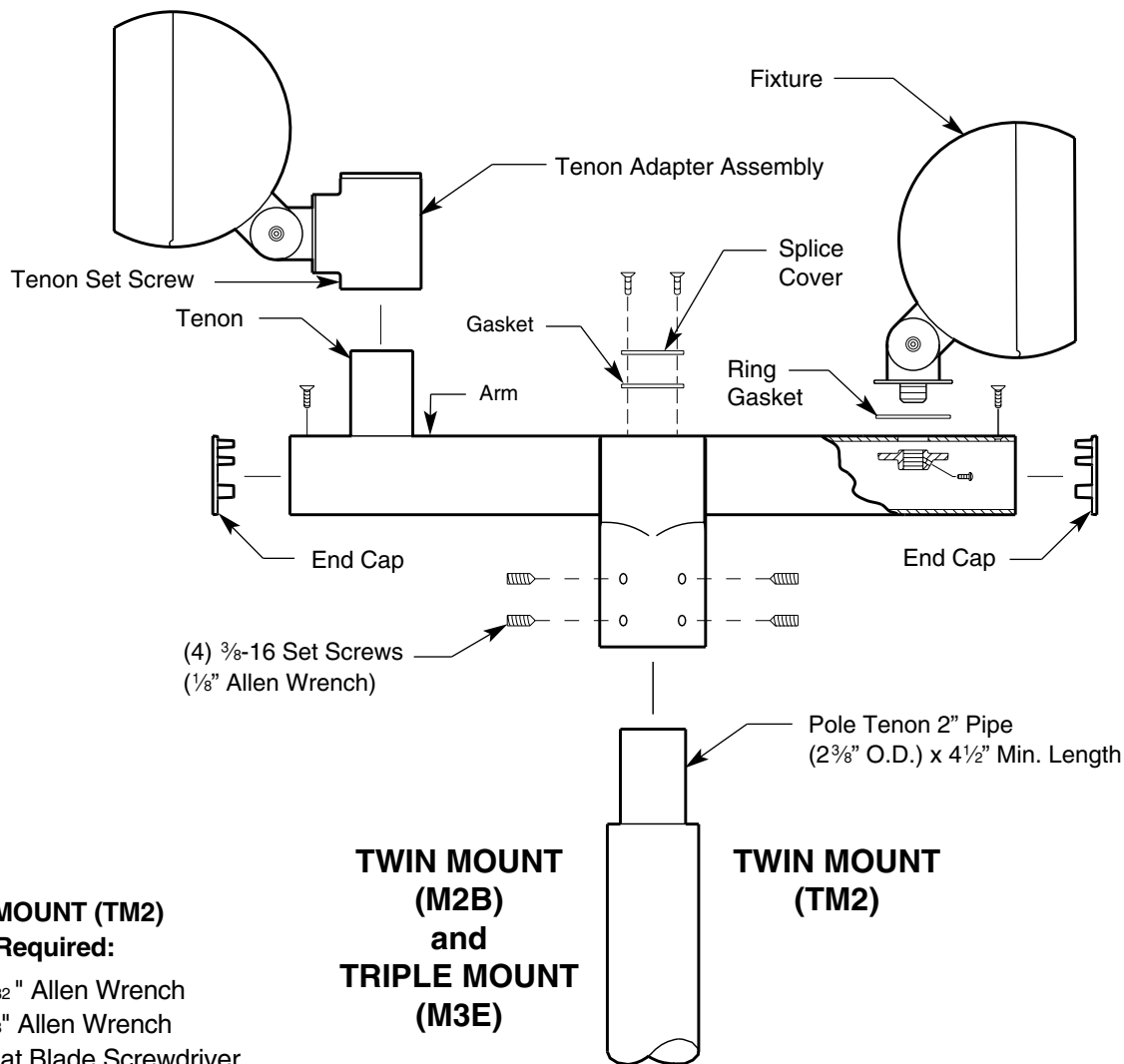
for PT, PT2, SPT, SPM, M2B, and TM2

## TWIN MOUNT (M2B) and TRIPLE MOUNT (M3E) (Typical Installation)

**Tools Required:**  Flat Blade Screwdriver   $\frac{3}{32}$ " Allen Wrench   $\frac{1}{8}$ " Allen Wrench

**MOUNTING INSTRUCTIONS:**  Make certain electrical supply is **OFF**.

1. Fish wires through arm.
2. Place arm over pole tenon, orient in desired direction and tighten set screws. Torque screws to 10 foot-pounds. **To prevent windmilling, remove one tenon set screw, drill  $\frac{3}{8}$ " dia. recess in tenon for screwpoint, and replace screw.**
3. Attach fixture to tenon adapter as per post top mounting instructions on previous page.
4. Attach end caps.
5. See fixture installation instructions for swivel adjustment.



### TWIN MOUNT (TM2)

**Tools Required:**  
  $\frac{3}{32}$ " Allen Wrench  
  $\frac{1}{8}$ " Allen Wrench  
 Flat Blade Screwdriver

### TWIN MOUNT (M2B) and TRIPLE MOUNT (M3E)

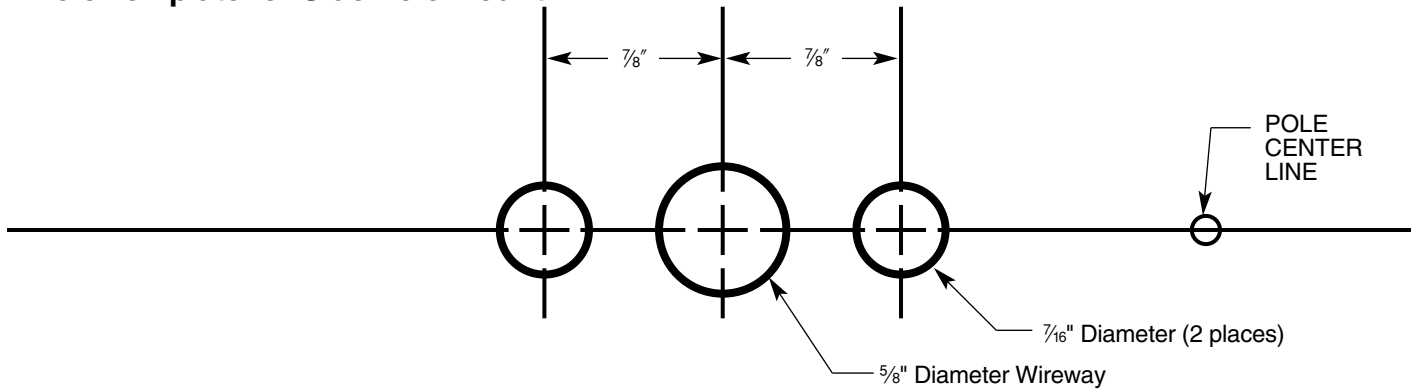
**MOUNTING INSTRUCTIONS:**  Make certain electricity supply is **OFF**.

1. Fish wires through arm.
2. Place arm over pole tenon, orient in desired direction and tighten set screws. Torque screws to 10 foot-pounds. **To prevent windmilling, remove one tenon set screw, drill  $\frac{3}{8}$ " dia. recess in tenon for screwpoint, and replace screw.**
3. Screw fixture into arm. Make sure swivel makes contact with gasket, orient in desired direction and tighten locking screw inside arm.
4. Make all wiring connections observing polarity, i.e.; green-to-ground, white-to-common and black-to-voltage.
5. Attach end caps.
6. See fixture installation instructions for swivel adjustment.

# AFL10 Series Mounting Instructions

for PT, PT2, SPT, SPM, M2B, and TM2

## Hole Template for Side Pole Mount



### KIM LIGHTING LIMITED WARRANTY

When installed in accordance with Kim Installation Instructions and accepted trade practices, the following shall apply:

#### General Product Limited Warranty Coverage

All material and component parts used in the manufacture of Kim Products, are warranted to be free from defects of material and/or workmanship for a period of 1 year from date of sale, with the following exceptions:

#### Auxiliary Equipment

All auxiliary equipment (such as lamps, ballasts, and transformers) provided by and/or included in Kim Products shall carry the component manufacturer's warranty.

#### Copper and Bronze Landscape Components

Copper and Bronze Landscape fixture components shall be warranted against defects of material and/or workmanship, and failure due to corrosion, for a period of 25 years from date of sale.

#### Composite In-Grade Components

Composite In-Grade fixture components installed below grade, shall be warranted against defects of material and/or workmanship, and failure due to corrosion, for a period of 7 years from date of sale.

#### Aluminum Landscape Components

Aluminum Landscape fixture components not in direct contact with soil, shall be warranted against defects of material and/or workmanship for a period of 3 years from date of sale. Aluminum fixture components in direct contact with soil shall be warranted from defects of material and failure from corrosion for a period of 1 year from date of sale.

#### Limit of Liability and General Conditions

Only products which are installed, used and maintained in accordance with applicable Kim instructions, specifications and accepted trade practices, are covered by the Kim Warranty. During the warranty period, with proof of purchase, Kim will repair or replace with the same or similar product, at Kim's option, without charge. Labor costs are the owner's responsibility and are excluded from this warranty. This warranty is void if the product is modified, tampered with, misapplied, poorly installed, improperly maintained, or subjected to abnormal conditions.

Repair or replacement as provided under this warranty is the exclusive remedy of the purchaser. This warranty is in lieu of all other warranties, expressed or implied, including any implied warranty of fitness for a particular application. Kim Lighting shall not be liable to the purchaser for indirect or consequential damages.



How may we serve you better?  
Please let us know. Visit our website at:  
[www.kimlighting.com](http://www.kimlighting.com)  
Your concerns are important to us.