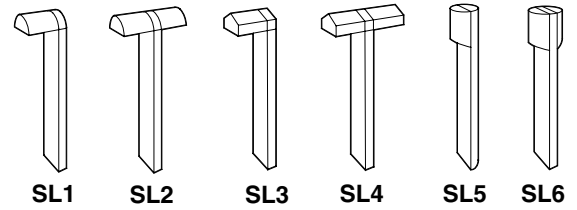




KIM LIGHTING

P.O. Box 60080 • 16555 East Gale Ave.
City of Industry, California 91716-0080
626/968-5666 • FAX 626/330-3861



SITE LIGHTFORMS ANCHOR BOLT Installation Guide

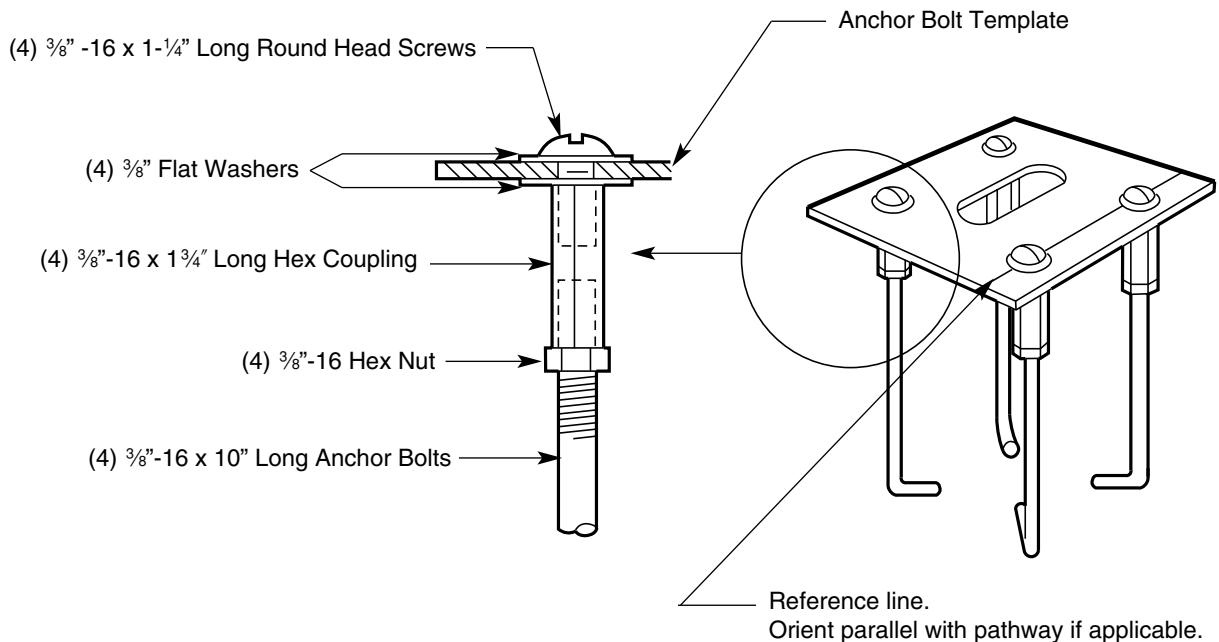


WARNING: Fixtures must be grounded in accordance with local codes or the National Electrical Code. Failure to do so may result in serious personal injury.

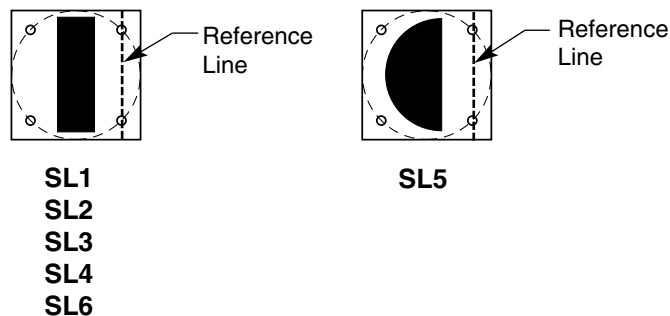
NOTE: Keep this sheet for future reference.

Field Preparation - Anchor Bolt Assembly:

1. Install (4) $\frac{3}{8}$ "-16 x 1 $\frac{1}{4}$ " long round head screws with (4) $\frac{3}{8}$ " flat washers through template and secure with (4) $\frac{3}{8}$ " flat washers and (4) $\frac{3}{8}$ "-16 x 1 $\frac{3}{4}$ " hex couplings.
2. Thread (4) $\frac{3}{8}$ "-16 x 10" long anchor bolts into couplings until they bottom out. Back-off bolts to orient as shown and tighten $\frac{3}{8}$ "-16 hex nuts to lock in place.



PLAN VIEW - Anchor bolt orientation to fixture shaft.

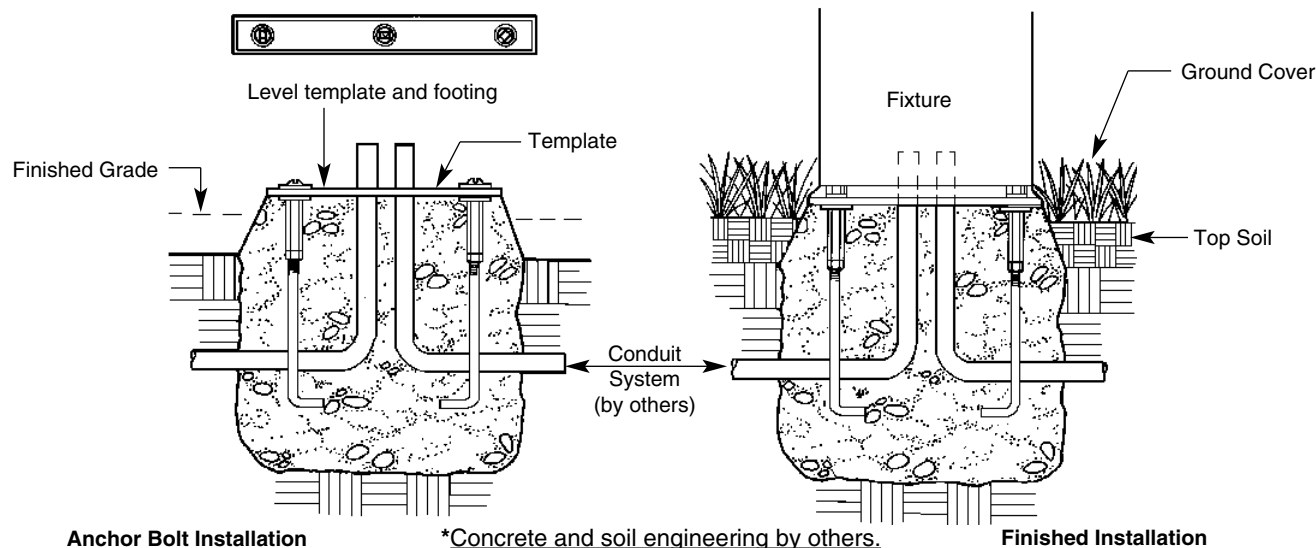


See page 2 for installation instructions.

SL Series Anchor Bolt Installation Guide

INSTALLATION IN PLANTED AREAS:

1. Dig adequate hole for anchor bolt assembly. Place assembly over conduit stub-up. **IMPORTANT:** Reference line on template must be parallel with pathway if applicable.
2. Slightly elevate the footing above grade to avoid standing water during heavy rains or irrigation. Elevation must allow for any top soil or mulch that will be added.
3. Pour concrete and level template. (A carefully leveled template and footing will provide a smooth flat surface and a level fixture.) Template is the same size as fixture base and may be used to contour the concrete footing to blend with fixture base casting.
4. Ground cover or shrubbery may be allowed to conceal fixture base.



INSTALLATION IN PAVED AREAS:

1. Dig adequate hole for anchor bolt assembly. Place assembly over conduit stub-up. **IMPORTANT:** Reference line on template must be parallel with pathway if applicable.
2. Select mounting option of a standard or concealed base, noting difference in grade and conduit stub-up levels. **IMPORTANT:** Concealed base will obstruct access to field wiring and fixture mounting bolts, inhibiting future removal of fixture if required.
3. For standard base installations the concrete footing is poured with the bottom of the template at finished grade. For a concealed base installation the finished grade is to be determined by others. Reference Note: Fixture base is $\frac{7}{8}$ " thick.
4. Pour concrete and level template. (A carefully leveled template and footing will provide a smooth flat surface and a level fixture.)
5. A sealed expansion joint should be used where paving meets footing or fixture shaft.

