

For these fixtures: ARA2, SARA2, ETA2, SETA2,
CC17A, CC21A, WP9SA2, and WP9LA2

Kim Vertical Slipfitter Installation Instructions



WARNING: Fixtures must be grounded in accordance with local codes or the National Electrical Code. Failure to do so may result in serious personal injury.

NOTE: All wiring must be done by a qualified electrician. KEEP THIS SHEET FOR FUTURE REFERENCE.

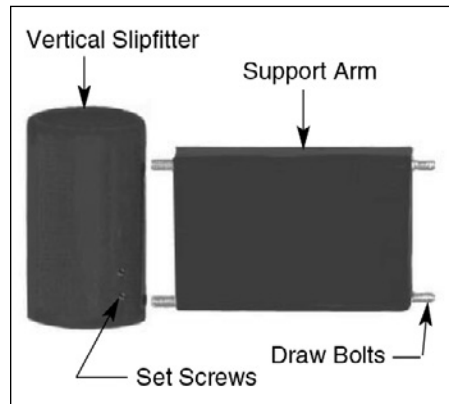
Attention: If you intend to install a smaller fixture (i.e. SAR/SET) onto the VSF, be sure to remove C - 16 set screw located under wireway hole. Re-install set screw on the tapped hole closest to the bottom of the VSF.

Tools Required: □ $\frac{3}{8}$ " Socket Wrench □ $\frac{2}{32}$ " Allen Wrench

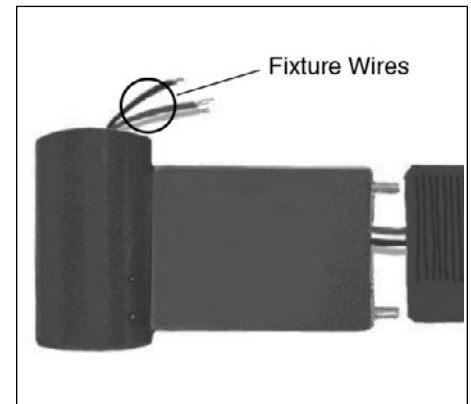
INSTALLATION INSTRUCTIONS: Make certain electrical supply is **OFF** before starting fixture.



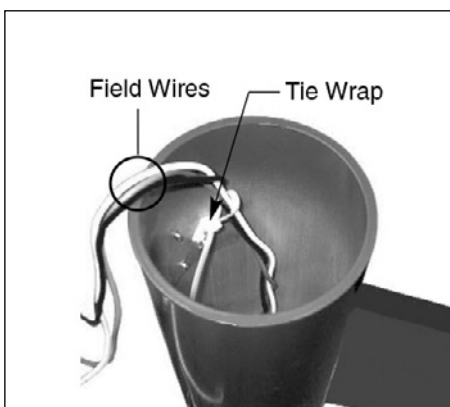
1. Remove pole cap assembly from slipfitter using $\frac{3}{32}$ " allen wrench.



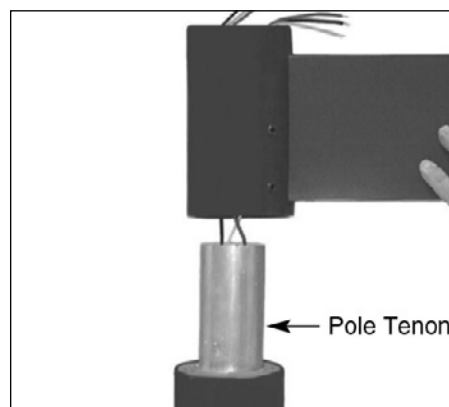
2. Thread draw bolts into slipfitter. Slide support arm over draw bolts.



3. Feed fixture wires through arm and out top of slipfitter. Mount fixture to arm using washers and thin jam nuts, torqued to 15-20 ft.-lbs. Secure with thick nuts over jam nuts.



4. Pull field wires through pole tenon into slipfitter and through tie wrap. Tie field wires into a knot or back loop through tie wrap.

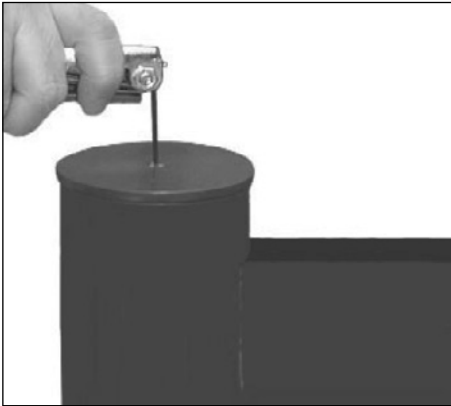


5. Carefully slide the slip-fitter over the tenon making sure wires are not pinched.



6. Using $\frac{3}{16}$ " allen wrench, secure slipfitter to tenon with four set screws (provided).

Kim Vertical Slipfitter Installation Instructions



7. Make connection to field wires at top of slipfitter. Replace pole cap.

For warranty see <http://www.hubbellighting.com/resources/warranty>