

## Kim Anchor Bolt Installation Guide: Concrete Bollards

**WARNING:** Fixtures must be grounded in accordance with local codes or the National Electrical Code. Failure to do so may result in serious personal injury.

**NOTE:** All wiring must be done by a qualified electrician.

Luminaires provided with receptacle outlet panel, (42A-ROP / 42A-ROP-L), shall be provided with instructions to install weather resistant receptacles suitable for wet locations.

**KEEP THIS SHEET FOR FUTURE REFERENCE.**

**Bollards:** GEM1C, PA7R, PA7S, VRBC, VRB1C, VRB2C, VRB3C, VRB4C, VSBC, VSB1C, VSB2C

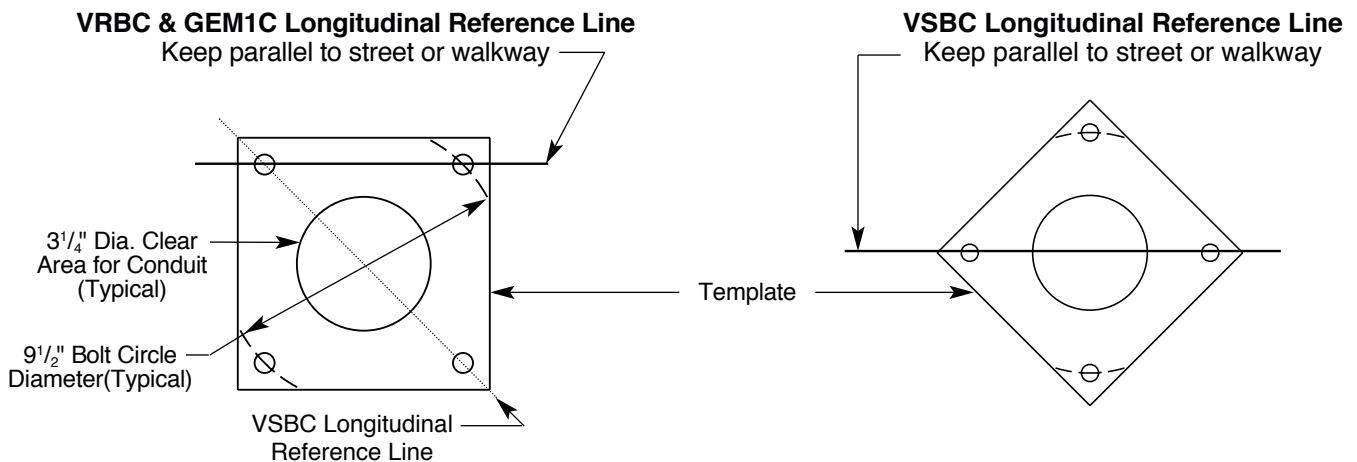
**Tools Required:**  #2 Phillips Screwdriver  3/4" Deep Socket, 6- or 12- point  Ratchet Driver  
 Ratchet Driver extension  1/8" Hex Key  9/16" Wrench

**WARNING:** Make certain electrical supply is **OFF** before starting fixture installation.

**Note:** Concrete foundation is to be designed according to local soil conditions (by others). Provide a channel through the grout for drainage from the pole interior.

Fixture Catalog Number	"X" Dimension Template Recess	"Y" Dimension Template Recess	Template Part Number
GEM1C, PA7R, VRBC, VRB1C, VRB2C, VRB3C, VRB4C	3"	16"	96042
PA7S, VSBC, VSB1C, VSB2C	2"	15"	

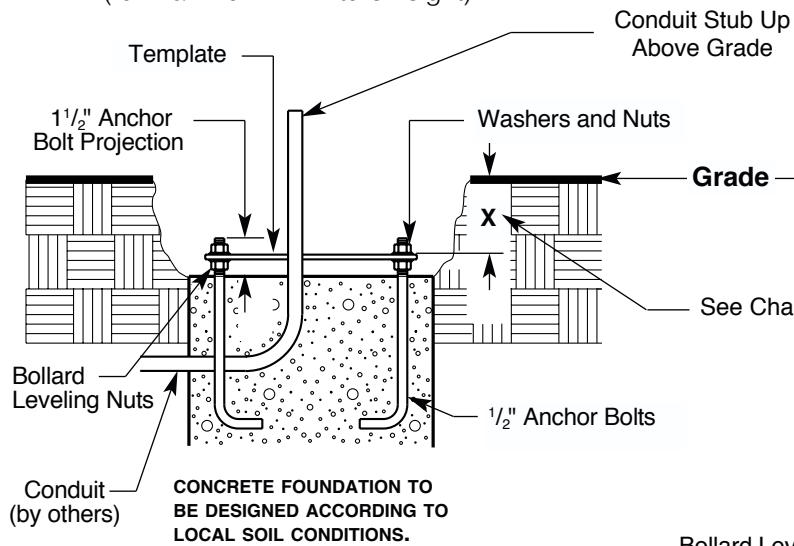
### Template Orientation:



# Kim Anchor Bolt Installation Guide: Concrete Bollards

## Installation at Grade Level:

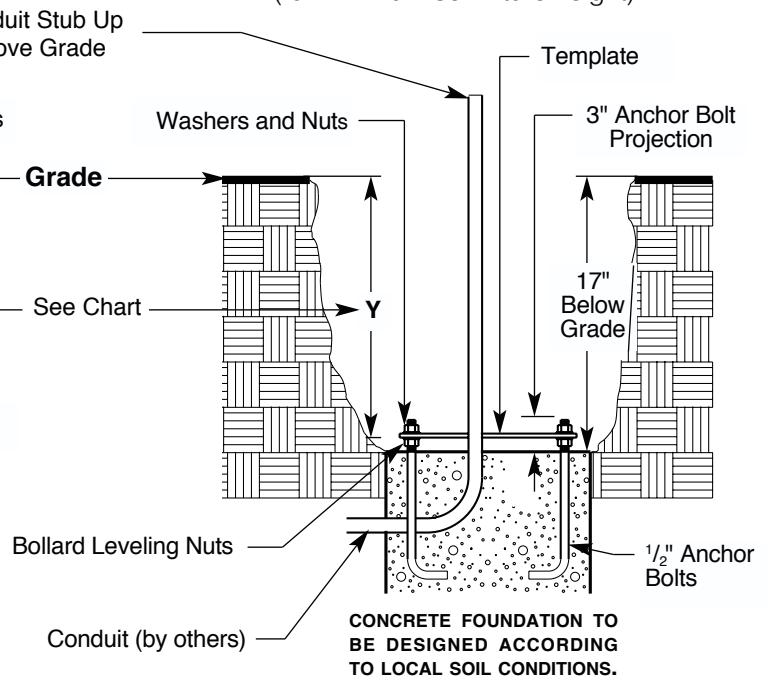
(for maximum 42" fixture height)



CONCRETE FOUNDATION TO BE DESIGNED ACCORDING TO LOCAL SOIL CONDITIONS.

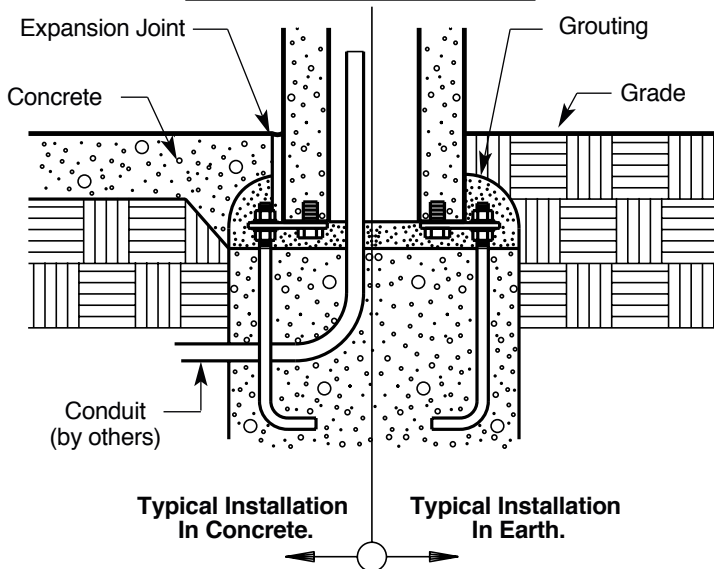
## Installation Below Grade Level:

(for minimum 30" fixture height)



CONCRETE FOUNDATION TO BE DESIGNED ACCORDING TO LOCAL SOIL CONDITIONS.

## Final Installation Detail:





### Installation Instructions:

1. Dig an adequate hole for anchor bolts and template.
  2. Install anchor bolts and fill hole as shown in illustrations.
  3. To ease bollard installation, level bollard leveling nuts.
  4. In final assembly the bollard must have full contact with concrete.
  5. See "Final Installation Detail" at left to see how the final assembly should look for the greatest amount of support.
  6. Bollard installation instructions will be supplied with bollard.
- Note: Cover all exposed metal mounting hardware.

# Kim Anchor Bolt Installation Guide: Concrete Bollards

## Installation warnings and cautions for standard products (Continued) Avertissements d'installation et mise en garde..


 **CAUTION:** Do not alter, relocate, or remove wiring, lampholders, ballasts, or any other electrical components.

 **ATTENTION:** Ne pas modifier, déplacer ni enlever de câble, de douille de lampe, de ballast ou autre composant électrique.


 **ADDITIONAL WARNINGS**


 **AVERTISSEMENTS SUPPLÉMENTAIRES**


### For in ground fixtures


 **SAFETY WARNING: DO NOT** install these fixtures in submersible installations such as fountains or swimming pools. Extreme caution should be taken when installed in paved areas.


### Pour les appareils d'éclairage enterrés

 **DIRECTIVE DE SÉCURITÉ: NE PAS** installer ces appareils d'éclairage dans les endroits submergés comme les bassins de fontaines ou les piscines. Une extrême prudence doit être observée lors du montage sur des surfaces pavées.


 **CAUTION:** To help maintain a clean, dry splice compartment, seal the conduit entries with RTV.

 **MISE EN GARDE:** Pour garder le compartiment de jonction des fils propre et sec, scellez les entrées de conduits avec du composé RTV.


 **CAUTION:** Some fixtures are not approved for walk-over areas, reference instruction sheet supplied with fixture.


 **MISE EN GARDE:** Certains appareils d'éclairage ne sont pas approuvés pour montage dans les aires piétonnières. Se référer aux directives de la feuille fournie avec l'appareil.


### For Landscape fixtures

 **WARNING:** Portable spear or tree mounts using a cord and plug must be plugged into a receptacle protected by a Ground Fault Circuit Interrupter (GFCI) in accordance with the National Electrical Code. Failure to do so may result in serious personal injury.


### Pour appareils d'aménagement paysager

 **AVERTISSEMENT:** Selon le Code national de l'électricité, les appareils portatifs de type lance ou pour montage dans les arbres qui sont munis de cordon et fiche, doivent être branchés dans une prise à protection par disjoncteur de mise à la terre. Une non-conformité pourrait conduire à des blessures graves.


 **CAUTION:** Particular care should be taken not to locate fixtures where small children can reach them if higher wattages are used.

 **MISE EN GARDE:** Une attention particulière devrait être portée pour ne pas installer les appareils d'éclairage dans les endroits accessibles par les jeunes enfants, spécialement si la puissance de l'ampoule est élevée.

### For 12v Landscape fixtures:

 **WARNING:** To reduce the risk of fire or injury, DO NOT overdrive fixtures with greater than 12 volts or fixture overheating and short lamp life will occur. DO NOT overload the transformer by installing (or relamping) higher wattage lamps than planned. Note: Total wattage of all lamps connected to one transformer MUST NOT exceed the capacity of that transformer. DO NOT install fixtures within 10 feet (3.04m) of a pool, spa or fountain.

### Pour appareils d'aménagement paysager à 12 V

 **AVERTISSEMENT:** Pour réduire le risque d'incendie ou de blessures, NE PAS alimenter ces appareils d'éclairage à plus de 12 V car ceci conduira à une surchauffe de l'appareil et raccourcira la vie de l'ampoule. NE PAS surcharger le transformateur en utilisant des ampoules de puissance plus élevée que prévu, lors de l'installation ou des remplacements. Remarque: La puissance totale des ampoules connectées à un transformateur NE DOIT PAS excéder la capacité de ce dernier. NE PAS installer ces appareils d'éclairage à moins de 3 m (10 pi) de piscines, spas ou fontaines.

**KEEP THIS SHEET FOR FUTURE REFERENCE.  
CONSERVER LA PRÉSENTE FEUILLE POUR  
RÉFÉRENCE ULTÉRIEURE.**

For warranty see <http://www.hubbellighting.com/resources/warranty>