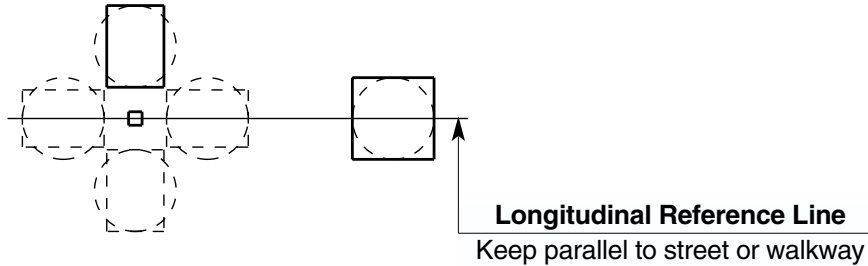
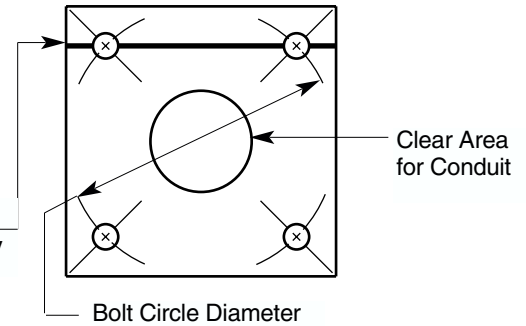




Fixture Mounting Orientation:

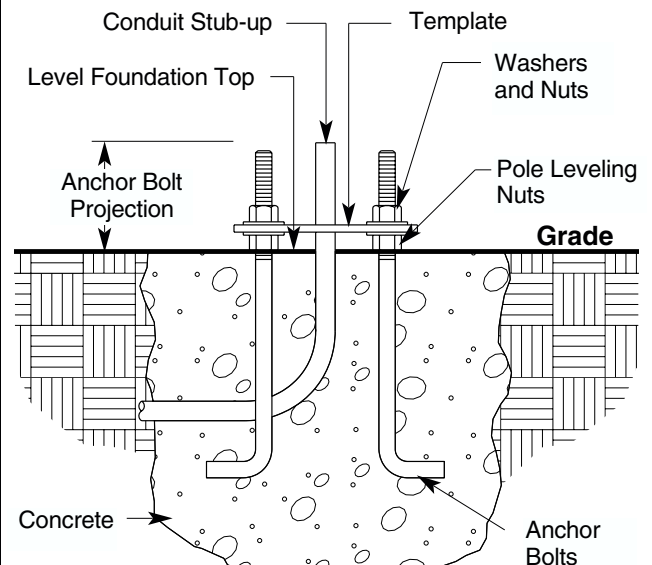


Template Orientation:



Pole Catalog Number	Template No.	Bolt Circle Dia.	Base Size	Anchor Bolt Proj.	Anchor Bolt Size
LTRA16-6156 LTRA16-6188	96060	9½"	10¼" Sq	¾"	¾" x 30" + 4"
LTRA20-5156 LTRA20-5188	96067	9½"	9¼" Sq	¾"	¾" x 30" + 4"
LTRA20-6156 LTRA20-6188	96060	9½"	10¼" Sq	¾"	¾" x 30" + 4"
LTRA25-6156 LTRA25-6188	96060	9½"	10¼" Sq	¾"	¾" x 30" + 4"
LTRA25-7156	96068	11"	10¾" Sq	¾"	1" x 36" + 4"
LTRA25-8156	96069	11½"	11⅝" Sq	¾"	1" x 36" + 4"
LTRA30-7156	96068	11"	10¾" Sq	¾"	1" x 36" + 4"
LTRA30-8156 LTRA30-8188 LTRA30-8250	96069	11½"	11⅝" Sq	¾"	1" x 36" + 4"
LTRA35-8156 LTRA35-8188 LTRA35-8250	96069	11½"	11⅝" Sq	¾"	1" x 36" + 4"
LTRA35-10188	96070	14¾"	14½" Sq	4¾"	1" x 48" + 6"
LTRA39-8188 LTRA39-8250	96069	11½"	11⅝" Sq	¾"	1" x 36" + 4"
LTRA39-10188 LTRA39-10250	96070	14¾"	14½" Sq	4¾"	1" x 48" + 6"
LTRA48-10250	96070	14¾"	14½" Sq	4¾"	1" x 48" + 6"
LTRA50-10250	96071	14¾"	14½" Sq	4¾"	1¼" x 42" + 6"

Pole Anchor Bolt Guide:



**CONCRETE FOUNDATION TO BE DESIGNED
ACCORDING TO LOCAL SOIL CONDITIONS.**

NOTE: Pole Base *must* have full contact with foundation by grouting. Provide a channel through the grout for drainage from the pole interior.

Anchor Bolt Installation Guide - LTRA Poles

KIM LIGHTING LIMITED WARRANTY

When installed in accordance with Kim Installation Instructions and accepted trade practices, the following shall apply:

General Product Limited Warranty Coverage

All material and component parts used in the manufacture of Kim Products, are warranted to be free from defects of material and/or workmanship for a period of 1 year from date of sale, with the following exceptions:

Auxiliary Equipment:

All auxiliary equipment (such as lamps, ballasts, and transformers) provided by and/or included in Kim Products shall carry the component manufacturer's warranty.

Copper and Bronze Landscape Components

Copper and Bronze Landscape fixture components shall be warranted against defects of material and/or workmanship, and failure due to corrosion, for a period of 25 years from date of sale.

Composite In-Grade Components

Composite In-Grade fixture components installed below grade, shall be warranted against defects of material and/or workmanship, and failure due to corrosion, for a period of 7 years from date of sale.

Aluminum Landscape Components

Aluminum Landscape fixture components not in direct contact with soil, shall be warranted against defects of material and/or workmanship for a period of 3 years from date of sale. Aluminum fixture components in direct contact with soil shall be warranted from defects of material and failure from corrosion for a period of 1 year from date of sale.

Limit of Liability and General Conditions

Only products which are installed, used and maintained in accordance with applicable Kim instructions, specifications and accepted trade practices, are covered by the Kim Warranty. During the warranty period, with proof of purchase, Kim will repair or replace with the same or similar product, at Kim's option, without charge. Labor costs are the owner's responsibility and are excluded from this warranty. This warranty is void if the product is modified, tampered with, misapplied, poorly installed, improperly maintained, or subjected to abnormal conditions.

Repair or replacement as provided under this warranty is the exclusive remedy of the purchaser. This warranty is in lieu of all other warranties, expressed or implied, including any implied warranty of fitness for a particular application. Kim Lighting shall not be liable to the purchaser for indirect or consequential damages.



How may we serve you better?
Please let us know. Visit our website at:
www.kimlighting.com
Your concerns are important to us.