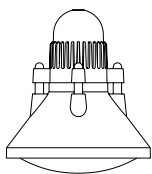




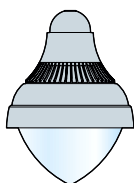
KIM LIGHTING

P.O. Box 60080 • 16555 East Gale Ave.
City of Industry, California 91716-0080
626/968-5666 • FAX 626/330-3861

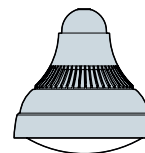
ERA®/Acorn / Bell Fixture Mount Installation Instructions



RA25 / RA17



AE21 / AE17



BE21 / BE17



WARNING: Fixtures must be grounded in accordance with local codes or the National Electrical Code. Failure to do so may result in serious personal injury.

MAINTENANCE: A regularly scheduled maintenance program should be established to retain optimum light output and reduce heat retention. Dusting with a soft, clean, dry cloth is normally sufficient for the reflector. Any accumulation of dust or dirt should be removed regularly from both sides of the lens during relamping (using ammonia water). Do not use alkaline or acid cleaners on reflector surfaces.

NOTE: All electrical work must be done by a qualified electrician. **KEEP THIS SHEET FOR FUTURE REFERENCE.**

ATTENTION! If your fixture is equipped with a multi-tap ballast and if no voltage was specified on the purchase order, the ballast has been wired for operation on a 277 volt circuit (347V in Canada). If other than 277 volts is required, i.e.; 120V, 208V, 240V, connect incoming voltage lead to required voltage on terminal block.

Tools Required:

- Flat Head Screwdriver
- Torque Wrench
- 1/8" Hex Wrench

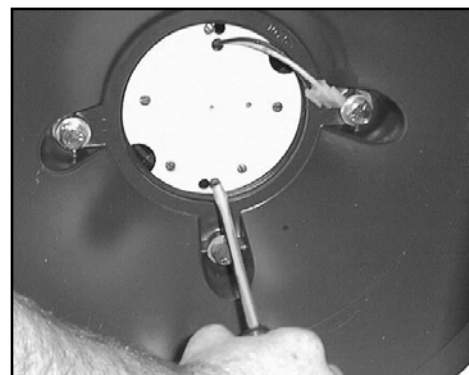
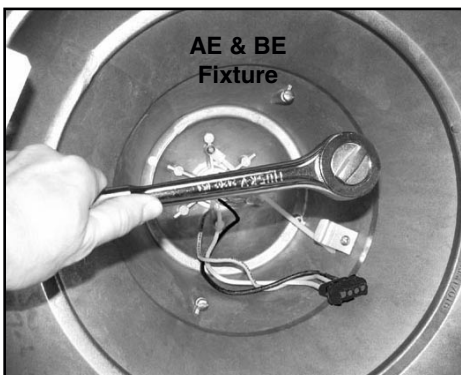
For RA17, AE17, BE17

- 9/16" 6- or 12- Point Deep (2" min.) Socket
- 12" (min.) Long Socket Extension

For RA25, AE21, BE21

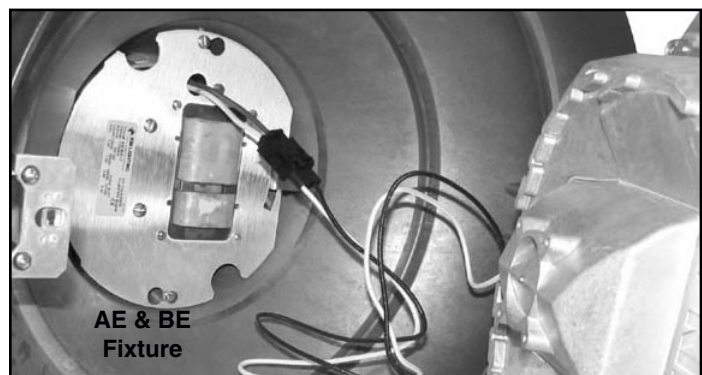
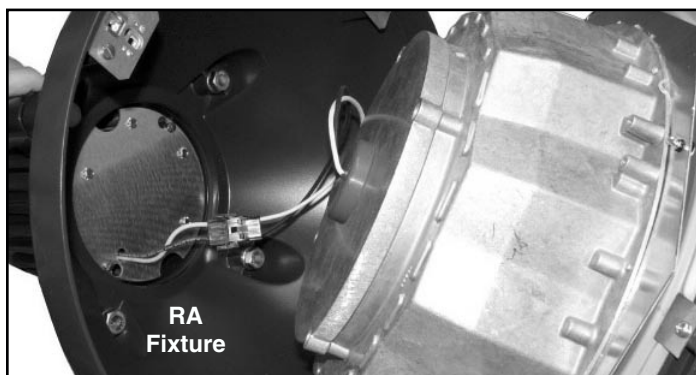
- 3/4" 6- or 12- Point Deep (2" min.) Socket
- 20" (min.) Long Socket Extension

Installation Instructions: Make certain electrical supply is **OFF** before starting fixture installation.



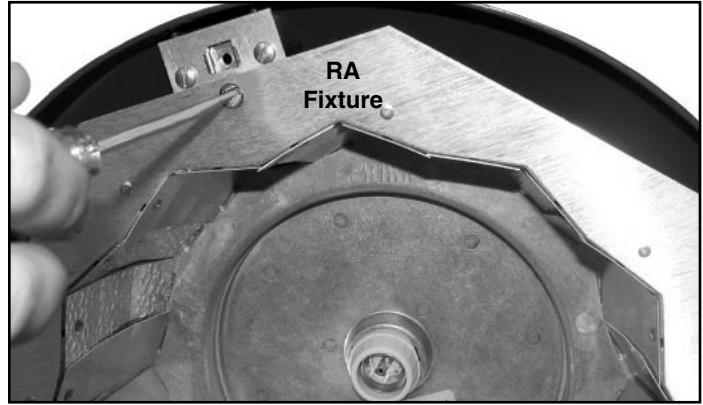
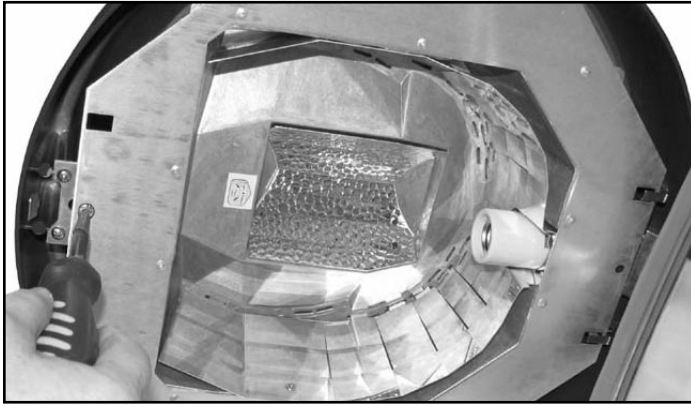
1. Install fixture head to arm with washers & nuts, tighten to 20 ft.-lbs.
IMPORTANT! - ORIENT "HINGE" SIDE OF FIXTURE TOWARDS POLE

2. Install ballast tray through key-holes, onto screws, tighten securely.

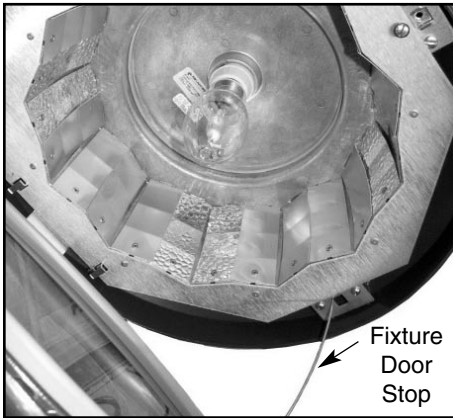


3. Hang reflector in housing in desired orientation, join wiring quick-disconnect and orient 1/4" turn fastener by moving it to position opposite hinge.

ERA® / Acorn / Bell Fixture Mount Installation Instructions



4. Secure reflector with ¼" turn fastener. **NOTE: Type 5 reflectors mount in one position.**



5. Install lamp of type and wattage shown on fixture label.

6. Close and secure fixture door.

WARNING:
This H.I.D. / Fluorescent fixture utilizes a lamp that may contain mercury. For information on disposal of lamp go to website: www.lamprecycle.org

How may we serve you better?
Please let us know. Visit our website at: www.kimlighting.com
Your concerns are important to us.

KIM LIGHTING LIMITED WARRANTY

When installed in accordance with Kim Installation Instructions and accepted trade practices, the following shall apply:

General Product Limited Warranty Coverage

All material and component parts used in the manufacture of Kim Products, are warranted to be free from defects of material and/or workmanship for a period of 1 year from date of sale, with the following exceptions:

Auxiliary Equipment

All auxiliary equipment (such as lamps, ballasts, and transformers) provided by and/or included in Kim Products shall carry the component manufacturer's warranty.

Copper and Bronze Landscape Components

Copper and Bronze Landscape fixture components shall be warranted against defects of material and/or workmanship, and failure due to corrosion, for a period of 25 years from date of sale.

Composite In-Grade Components

Composite In-Grade fixture components installed below grade, shall be warranted against defects of material and/or workmanship, and failure due to corrosion, for a period of 7 years from date of sale.

Aluminum Landscape Components

Aluminum Landscape fixture components not in direct contact with soil, shall be warranted against defects of material and/or workmanship for a period of 3 years from date of sale. Aluminum fixture components in direct contact with soil shall be warranted from defects of material and failure from corrosion for a period of 1 year from date of sale.

Limit of Liability and General Conditions

Only products, which are installed, used and maintained in accordance with applicable Kim instructions, specifications and accepted trade practices, are covered by the Kim Warranty. During the warranty period, with proof of purchase, Kim will repair or replace with the same or similar product, at Kim's option, without charge. Labor costs are the owner's responsibility and are excluded from this warranty. This warranty is void if the product is modified, tampered with, misapplied, poorly installed, improperly maintained, or subjected to abnormal conditions.

Repair or replacement as provided under this warranty is the exclusive remedy of the purchaser. This warranty is in lieu of all other warranties, expressed or implied, including any implied warranty of fitness for a particular application. Kim Lighting shall not be liable to the purchaser for indirect or consequential damages.

