



Juniper AP47E – 8dBi Warehouse

Antenna Deployment

This document is a guide and explanation of the difference in deployments of the AccelTex Solutions 8dBi Warehouse antenna for the Juniper-Mist AP47E (ATS-03952 / ATS-OP-2456-8-14MPC-36).

Terms:

8dBi Warehouse antenna refers to the ATS-OP-245-8-14MPC-36

Contents

1. Antenna Specifications: ATS-OP-2456-8-14MPC-36.....	2
2. Deployment Specifications.....	4
2.a. 8dBi Warehouse Deployment.....	4



1. Antenna Specifications: ATS-OP-2456-8-14MPC-36



ELECTRICAL SPECIFICATIONS

Frequency Range: 2.4-2.48/5.15-5.85/5.925-7.125 GHz
Gain (Client Serving): 7/8/8dBi
Polarization: 14 Vertical
Horizontal Beamwidth: 105°/110°/110°
Vertical Beamwidth: 50°/30°/25°
VSWR: <1.5:1 Max: 2.5
Isolation: >30dB
Impedance: 50 Ω



MECHANICAL SPECIFICATIONS

Dimensions: 19.3" x 19.3" x 2.25" (490x490x57mm)
Weight: 3.5 lb (1.5kg)
Cable Length: 36" (910mm)
Connector: 4MPC (5GHz), 6MPC-BLK (6GHz and Scan),
6MPC-WHT (2.4/5/GHz)

Radome Material: ASA
Number of Leads: 14
Cable Type: ATS-100
Installation: Flush Mount to Wall or Articulating
Wall/Pole Mount (Included)



ENVIRONMENTAL SPECIFICATIONS

Installation Environment: Indoor or Outdoor
IP Rating: IP66

WARRANTY

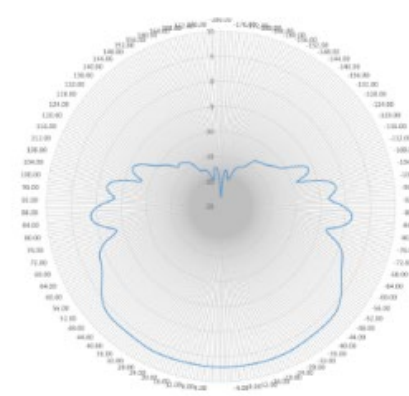
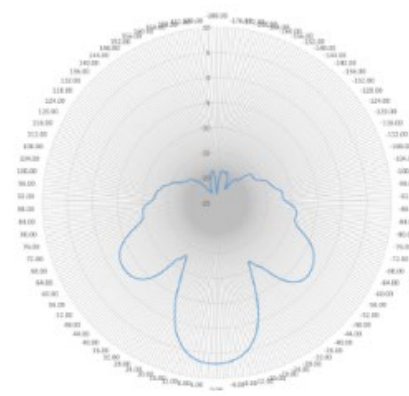
2 Year Limited Warranty



VERTICAL TRIBAND RADIO (6MPC-BLK)

HORIZONTAL

Frequency (MHz)	5900.0	6050.0	6150.0	6250.0	6350.0	6450.0	6550.0	6650.0	6750.0	6850.0	6950.0	7050.0	7125.0
Gain (dBi)	7.19	7.98	7.45	7.43	7.50	7.69	7.84	8.09	8.48	8.30	8.03	8.08	7.92



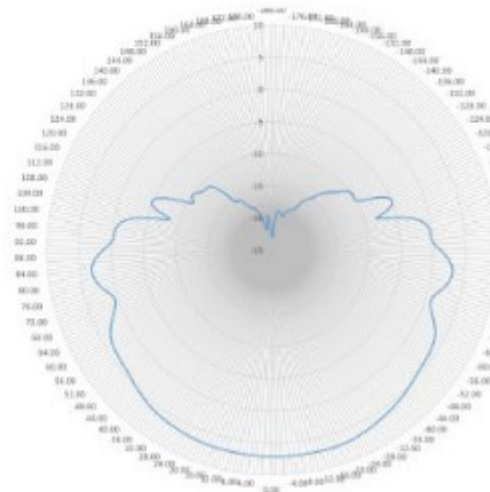
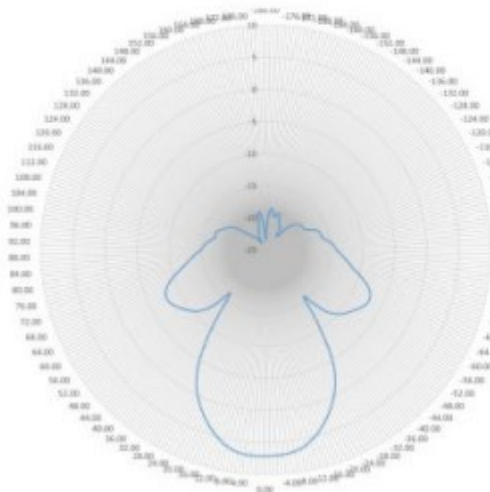


VERTICAL

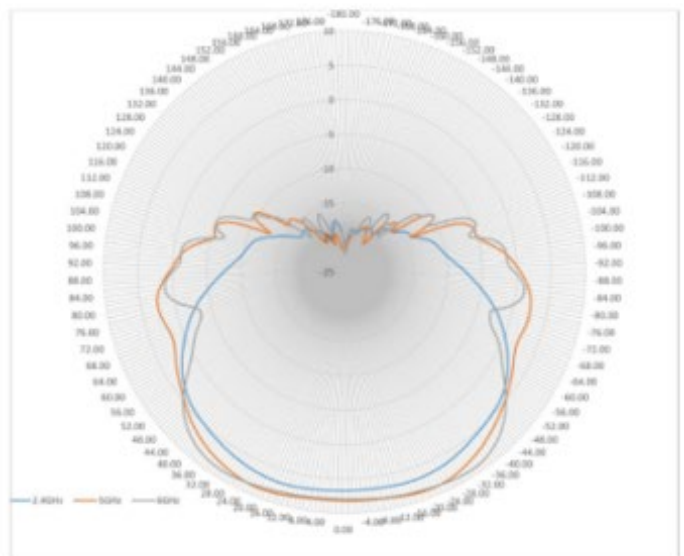
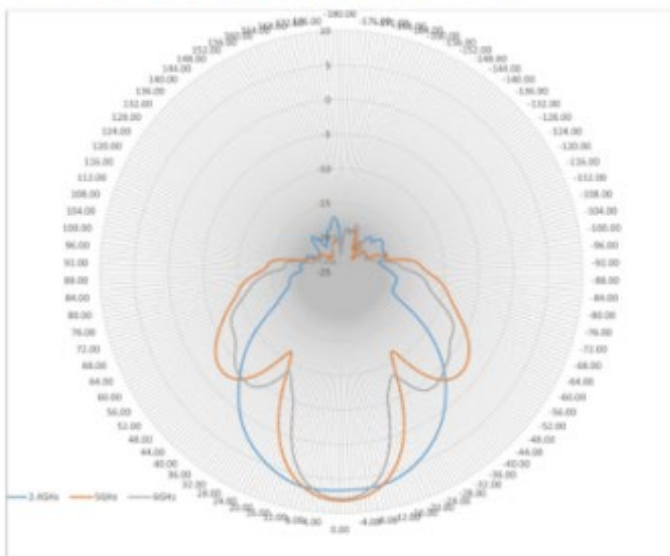
HORIZONTAL

5 GHZ RADIO (4MPC)

Frequency (MHz)	4900.0	5000.0	5100.0	5150.0	5250.0	5350.0	5450.0	5550.0	5650.0	5750.0	5850.0
Gain (dBi)	7.35	7.31	7.33	7.85	7.46	7.78	8.06	8.02	7.15	7.59	7.99



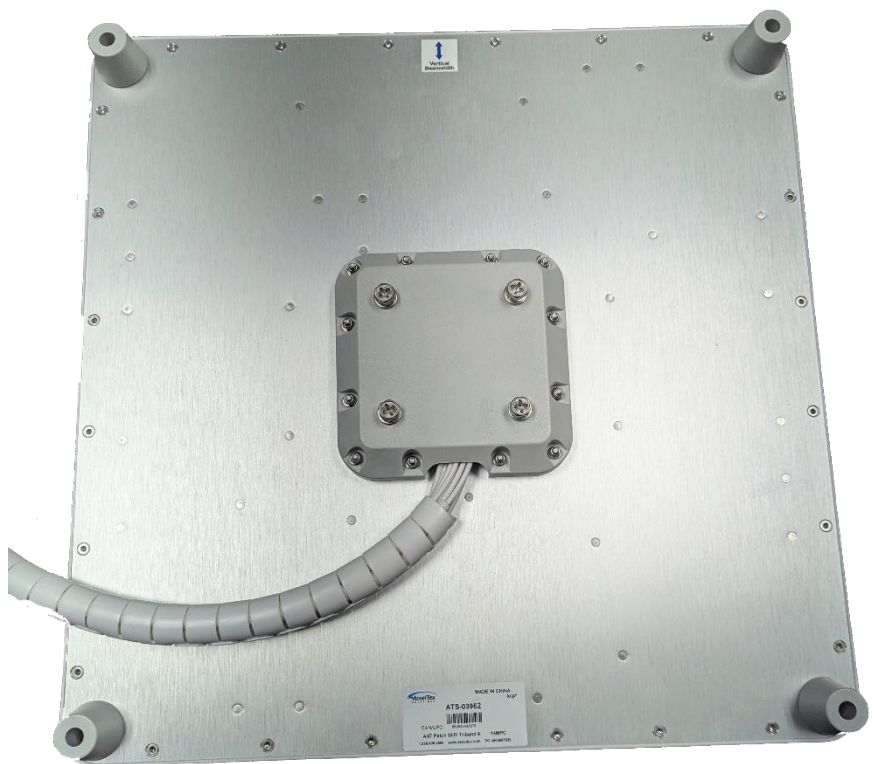
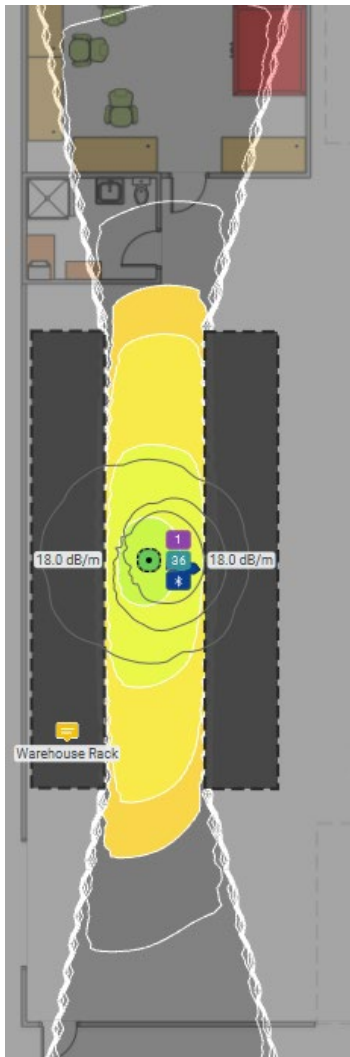
TRIBAND RADIO (6MPC-WHT)



2. Deployment Specifications

2.a. 8dBi Warehouse Deployment

When deploying the 8dBi warehouse antenna, you will need to mount the antenna to the ceiling with the vertical plane running perpendicular to the aisle you are covering. In this orientation, the 8dBi warehouse antenna will look like the plane of the side with the leads going to the side with the arrow is pointing at both racks in its aisle.





After viewing this document, if you have any questions, please contact us at info@acceltex.com.