

INSTALLATION INSTRUCTIONS FOR CABLE TO LIMITER WHEN USED WITH RUBBER INSULATED CABLE

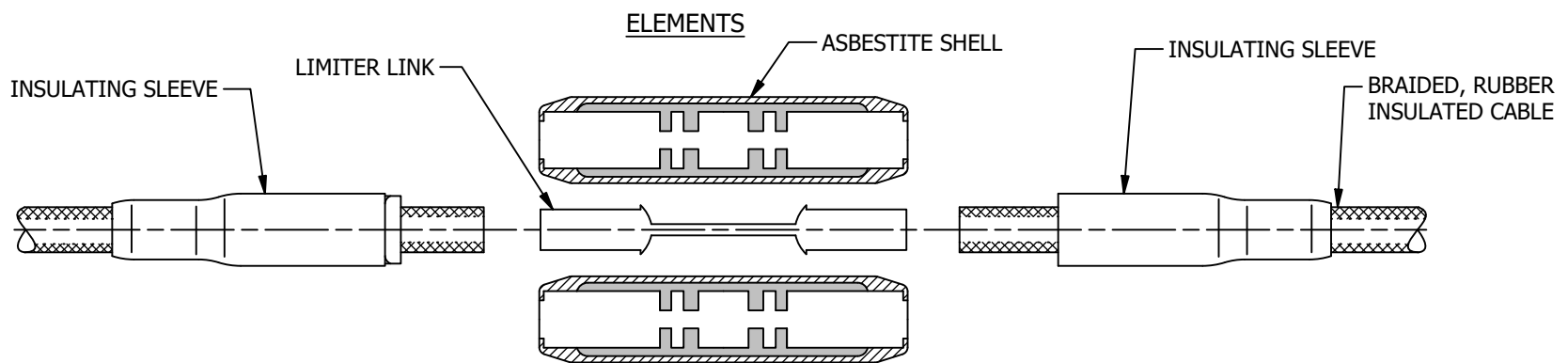
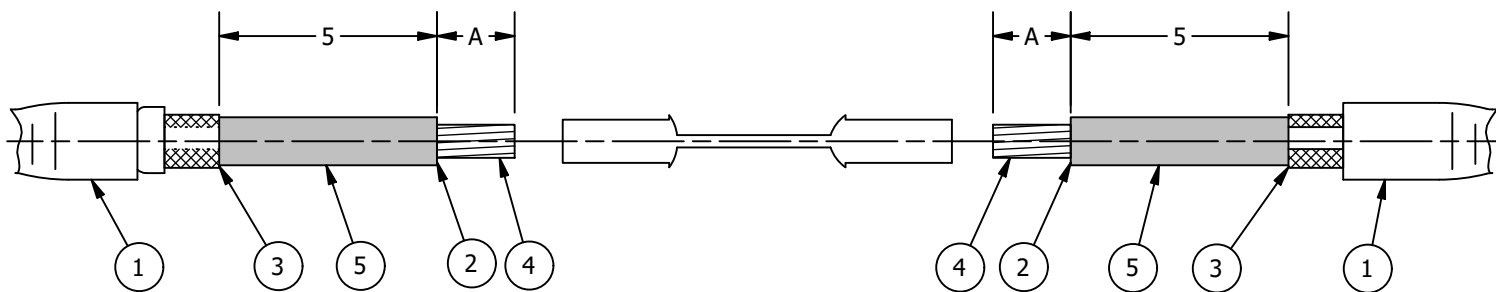
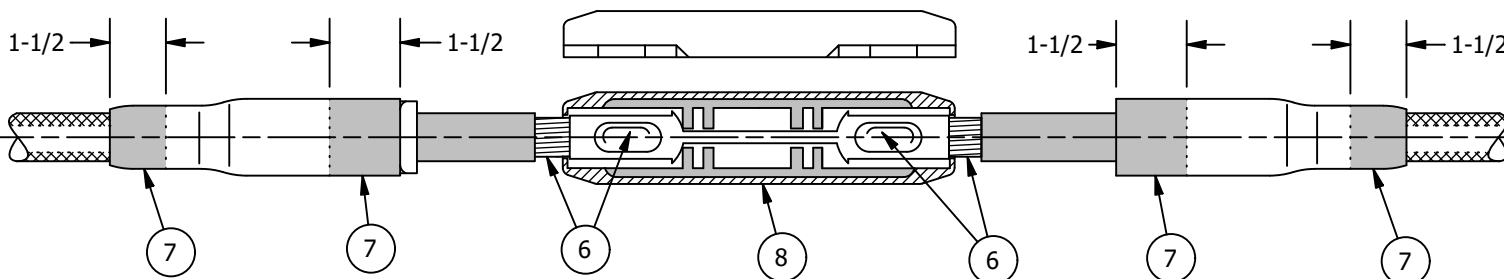


FIG.1



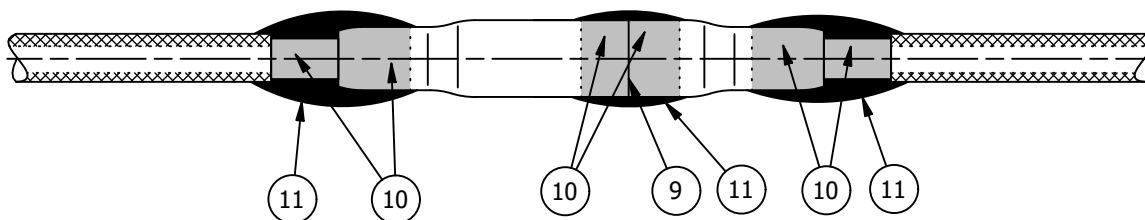
- ① SLIDE THE INSULATING SLEEVE HALVES OF THE LIMITER OVER THE CABLE ENDS.
- ② REMOVE THE INSULATION FOR A DISTANCE "A" EQUAL TO 2-1/2 INCHES ON CABLE SIZES 4/0 TO 400 MCM AND 3-1/4 INCHES ON CABLE SIZES 500 MCM AND 750 MCM.
- ③ REMOVE THE BRAID COVERING FOR A LENGTH OF 5 INCHES, BEING CAREFUL NOT TO CUT INTO THE RUBBER INSULATION.
- ④ CLEAN THE CABLE STRANDS WITH STEEL WOOL OR ABRASIVE CLOTH.
- ⑤ ROUGHEN AND CLEAN THE RUBBER INSULATION OF THE CABLE WITH ABRASIVE CLOTH OR SMOOTH CUT RASP AND REMOVE ALL FOREIGN MATTER.

FIG.2



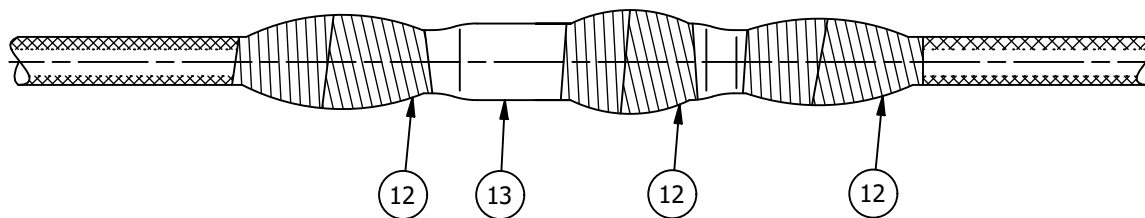
- ⑥ INSERT THE CABLE INTO THE LIMITER LINK SOCKETS AND INDENT USING THE BURNDY HYPRESS. MAKE ONE INDENT ON ALL SIZES UP TO 250 MCM AND TWO INDENTS ON CABLE SIZES ABOVE 250 MCM.
- ⑦ ROUGHEN AND CLEAN BOTH HALVES OF THE INSULATING SLEEVE FOR A LENGTH OF 1-1/2 INCHES ON EACH END.
- ⑧ PLACE THE ASBESTITE SHELLS OVER THE LIMITER LINK, CENTERING THE SHELLS OVER THE FUSIBLE SECTION.

FIG.3



- ⑨ SLIDE THE INSULATING SLEEVE HALVES TOGETHER OVER THE SHELLS UNTIL THEY INTERLOCK.
- ⑩ APPLY A THIN EVEN COAT OF RUBBER CEMENT TO THE EXPOSED ROUGHENED SURFACES. ALLOW TO DRY ONE MINUTE BEFORE APPLYING RUBBER TAPE.
- ⑪ APPLY THREE HALF-LAPPED LAYERS OF RUBBER TAPE WITH SUFFICIENT TENSION TO REDUCE ITS WIDTH FROM 3/4 INCH TO 1/2 INCH. ON BOTH ENDS, WRAP RUBBER TAPE IN CONTINUOUS LAYERS FOR A LENGTH OF 1-1/2 INCHES OVER THE RUBBER CABLE INSULATION AND 1-1/2 INCHES OVER THE INSULATING SLEEVE. AT THE POINT WHERE THE TWO HALVES INTERLOCK, WRAP 1-1/2 INCHES OF RUBBER TAPE OVER EACH END.

FIG.4



- ⑫ COMPLETELY COVER THE RUBBER TAPE WITH TWO HALF-LAPPED LAYERS OF FRICTION TAPE APPLIED WITH CONSIDERABLE TENSION IN ORDER TO COMPRESS THE RUBBER TAPE. THE FRICTION TAPE SHALL EXTEND 3/4 INCH OVER THE RUBBER TAPE ON THE INSULATING SLEEVE AND 3/4 INCH OVER THE BRAID COVERING OF THE CABLE TO PREVENT IT FROM FRAYING.
- ⑬ PAINT THE ENTIRE SPLICE WITH WATERPROOF INSULATING PAINT.

TO ORDER BURNDY® PRODUCTS
CALL

UNITED STATES
1-800-346-4175 (LONDONDERRY,
NH)

CANADA:
1-800-361-6975 (QUEBEC)
1-800-387-6487 (ALL OTHER PROVINCES)
FOR PRODUCT INFO: <http://www.burndy.com>

INSTALLATION INSTRUCTION CABLE TO LIMITER			
ITEM NO: --		CAT. NO: --	
SCALE: DRAWING SCALE		REV	
SIZE	DRAWING NO	REV	
B	50075049	B	
SHEET 1 OF 4			
BURNDY			

INSTALLATION INSTRUCTIONS FOR CABLE TO LIMITER WHEN USED WITH RUBBER INSULATED LEAD-COVERED CABLE

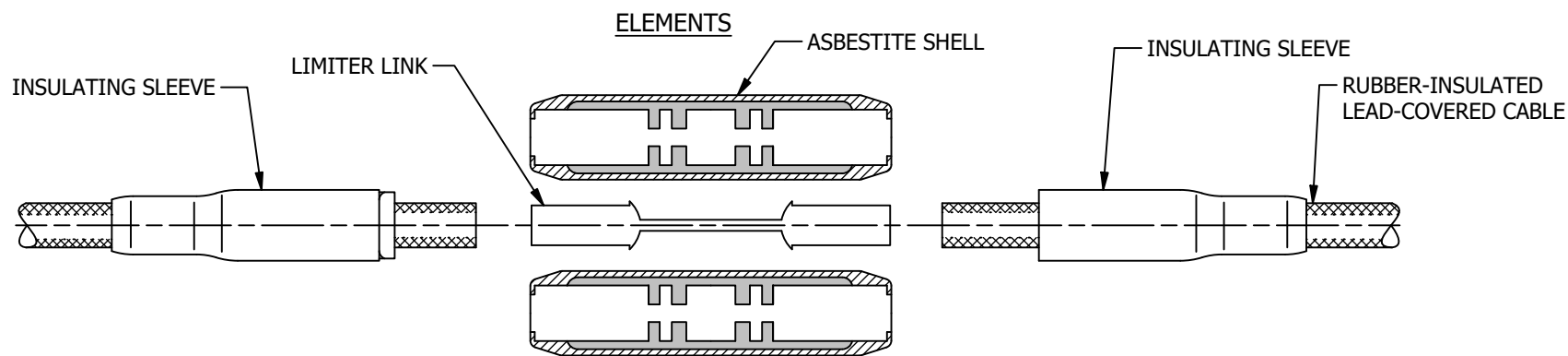
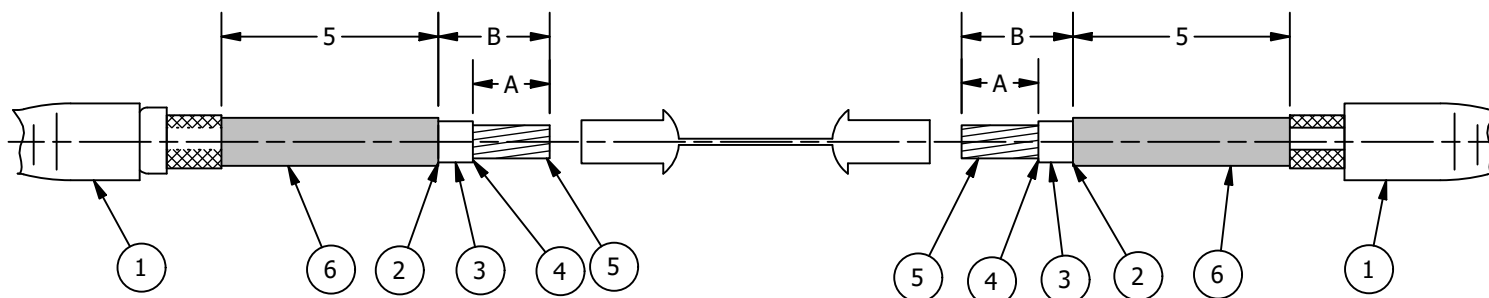
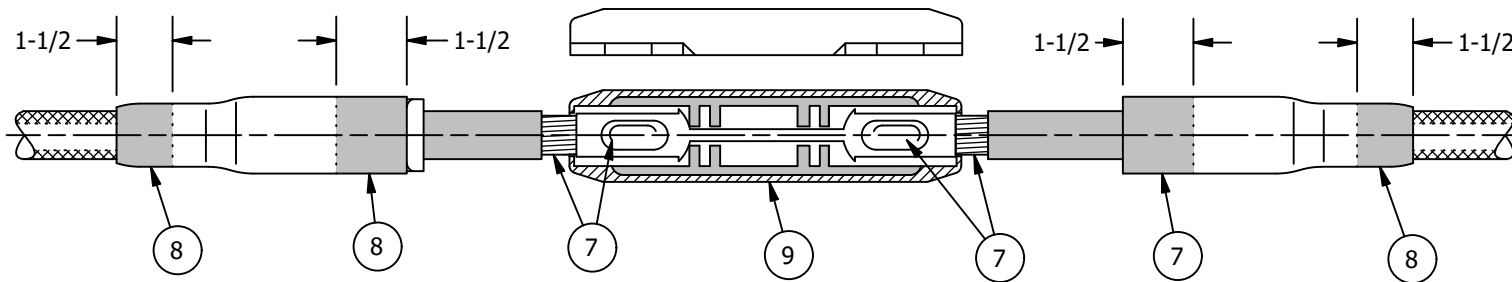


FIG. 1



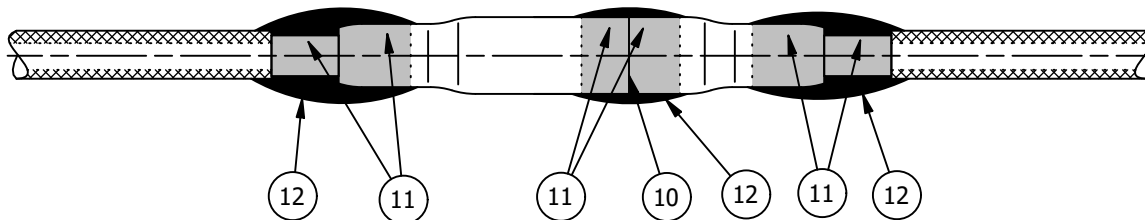
- ① SLIDE THE INSULATING SLEEVE HALVES OF THE LIMITER OVER THE CABLE ENDS.
- ② REMOVE THE LEAD SHEATH FOR A DISTANCE "B" EQUAL TO 4-1/4 INCHES ON CABLE SIZES FROM 4/0 TO 400 MCM AND 5 INCHES FOR 500 MCM AND 750 MCM. THE LEAD SHEATH SHOULD BE REMOVED FROM THE CABLE ENDS AS FOLLOWS: CUT HALF WAY THROUGH THE LEAD SHEATH AT A DISTANCE "B" FROM THE END OF THE CABLE; SPLIT THE SHEATH LENGTHWISE FROM THE END TO THE CUT; THEN TEAR LOOSE THE SECTION OF SHEATH BY PULLING ON ONE EDGE WITH PLIERS DIRECTLY AWAY FROM THE CABLE AXIS. A SLIGHT BELL WILL RESULT WHICH SHOULD NOT BE REMOVED.
- ③ REMOVE ALL BRAID THAT MAY APPEAR BETWEEN THE RUBBER INSULATION AND THE LEAD SHEATH EXPOSING THE RUBBER INSULATION.
- ④ REMOVE THE RUBBER INSULATION FROM THE CABLE STRANDS FOR A DISTANCE "A" EQUAL TO 2-1/2 INCHES ON CABLE SIZES 4/0 TO 400 MCM AND 3-1/4 INCHES ON 500 MCM AND 750 MCM.
- ⑤ CLEAN THE CABLE STRANDS WITH STEEL WOOL OR ABRASIVE CLOTH.
- ⑥ ROUGHEN AND CLEAN THE LEAD SHEATH WITH ABRASIVE CLOTH OR SMOOTH CUT RASP AND REMOVE ALL FOREIGN MATTER FOR A LENGTH OF 5 INCHES.

FIG. 2



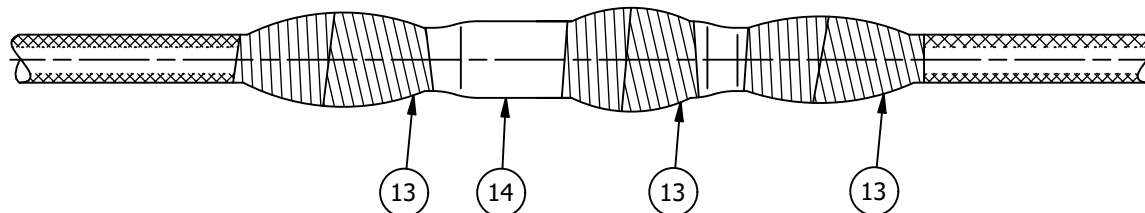
- ⑦ INSERT THE CABLE ENDS INTO THE LIMITER LINK SOCKETS AND INDENT USING THE BURNDY HYPRESS. MAKE ONE INDENT ON CABLE SIZES UP TO 250 MCM AND TWO INDENTS ON ALL CABLE SIZES ABOVE 250 MCM.
- ⑧ ROUGHEN AND CLEAN BOTH HALVES OF THE INSULATING SLEEVE FOR A LENGTH OF 1-1/2 INCHES ON EACH END.
- ⑨ PLACE THE ASBESTITE SHELLS OVER THE LIMITER LINK, CENTERING THE SHELLS OVER THE FUSIBLE SECTION.

FIG. 3



- ⑩ SLIDE THE INSULATING SLEEVE HALVES TOGETHER OVER THE SHELLS UNTIL THEY INTERLOCK.
- ⑪ APPLY A THIN EVEN COAT OF RUBBER CEMENT TO THE EXPOSED ROUGHENED SURFACES. ALLOW TO DRY ONE MINUTE BEFORE APPLYING RUBBER TAPE.
- ⑫ APPLY THREE HALF-LAPPED LAYERS OF RUBBER TAPE WITH SUFFICIENT TENSION TO REDUCE ITS WIDTH FROM 3/4 INCH TO 1/2 INCH. ON BOTH ENDS, WRAP RUBBER TAPE IN CONTINUOUS LAYERS FOR A LENGTH OF 1-1/2 INCHES OVER THE LEAD SHEATH AND 1-1/2 INCHES OVER THE INSULATING SLEEVE. AT THE POINT WHERE THE TWO HALVES INTERLOCK, WRAP 1-1/2 INCHES OF RUBBER TAPE OVER EACH END.

FIG. 4



- ⑬ COMPLETELY COVER THE RUBBER TAPE WITH TWO HALF-LAPPED LAYERS OF FRICTION TAPE APPLIED WITH CONSIDERABLE TENSION IN ORDER TO COMPRESS THE RUBBER TAPE. THE FRICTION TAPE SHALL EXTEND 3/4 INCH OVER THE RUBBER TAPE ON THE INSULATING SLEEVE AND THE LEAD SHEATH.
- ⑭ PAINT THE ENTIRE SPLICE WITH WATERPROOF INSULATING PAINT.

TO ORDER BURNDY® PRODUCTS
CALL

UNITED STATES
1-800-346-4175 (LONDONDERRY,
NH)

CANADA:
1-800-361-6975 (QUEBEC)
1-800-387-6487 (ALL OTHER PROVINCES)
FOR PRODUCT INFO: <http://www.burndy.com>

INSTALLATION INSTRUCTION CABLE TO LIMITER

ITEM NO: --

CAT. NO: --

SCALE: DRAWING SCALE

SIZE

DRAWING NO

REV

B

50075049

B

SHEET 2 OF 4

BURNDY®

**INSTALLATION INSTRUCTIONS FOR CABLE TO LIMITER
WHEN USED WITH PAPER INSULATED OR VARNISHED CAMBRIC LEAD COVERED CABLE**

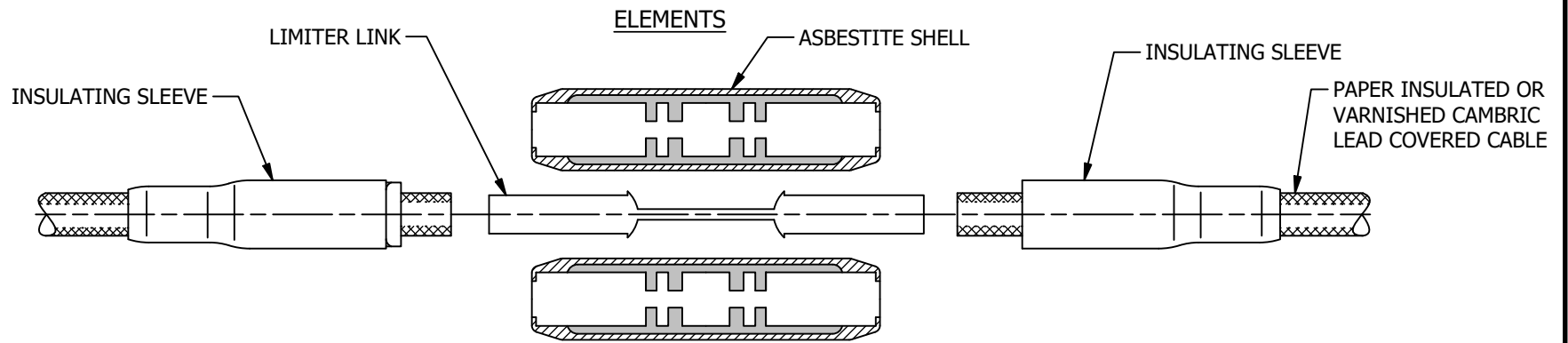
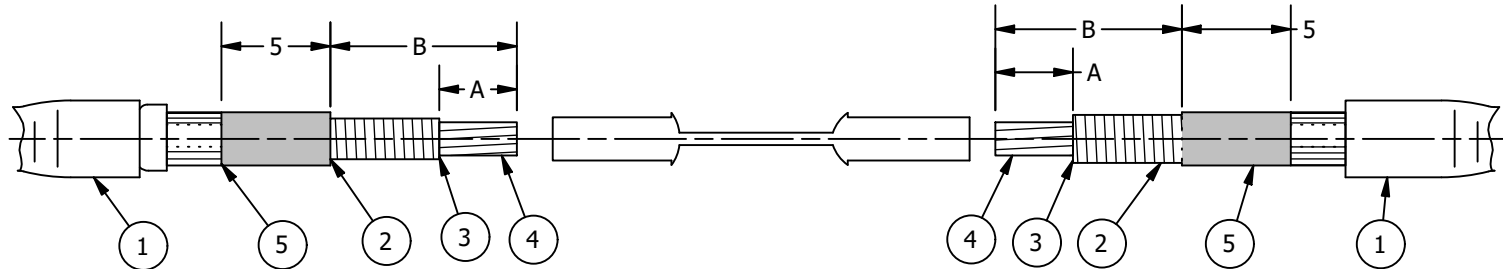
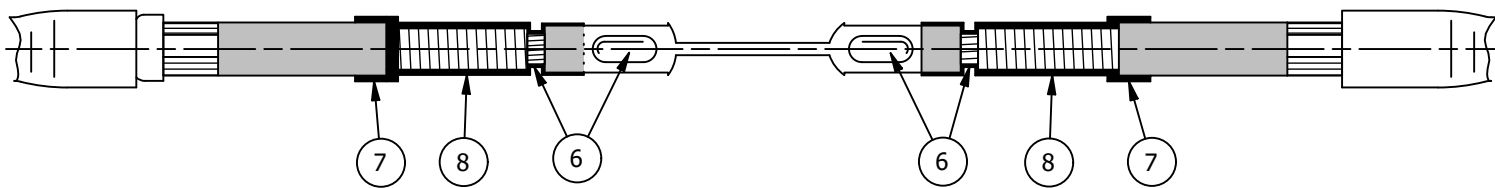


FIG. 1



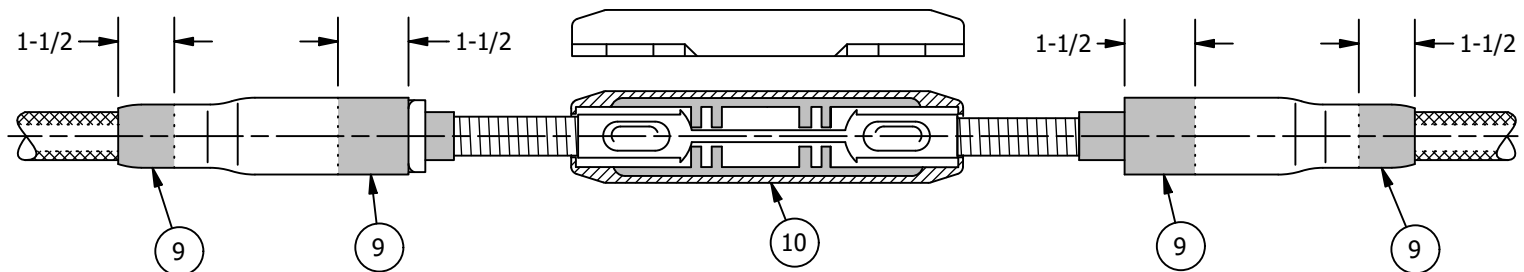
- ① SLIDE THE INSULATING SLEEVE HALVES OF THE LIMITER OVER THE CABLE ENDS.
- ② REMOVE THE LEAD SHEATH FOR A DISTANCE "B" EQUAL TO 4-1/4 INCHES ON CABLE SIZES FROM 4/0 TO 400 MCM AND 5 INCHES FOR 500 MCM AND 750 MCM. THE LEAD SHEATH SHOULD BE REMOVED FROM THE CABLE ENDS AS FOLLOWS: CUT HALF WAY THROUGH THE LEAD SHEATH AT A DISTANCE "B" FROM THE END OF THE CABLE; SPLIT THE SHEATH LENGTHWISE FROM THE END TO THE CUT; THEN, TEAR LOOSE THE SECTION OF SHEATH BY PULLING ON ONE EDGE WITH PLIERS DIRECTLY AWAY FROM THE CABLE AXIS. A SLIGHT BELL WILL RESULT WHICH SHOULD NOT BE REMOVED.
- ③ REMOVE THE PAPER OR VARNISHED-CAMBRIC INSULATION FROM THE CABLE STRANDS FOR A DISTANCE "A" EQUAL TO 2-1/2 INCHES ON CABLE SIZES FROM 4/0 TO 400 MCM AND 3-1/4 INCHES ON 500 MCM AND 750 MCM.
- ④ CLEAN THE CABLE STRANDS WITH STEEL WOOL OR ABRASIVE CLOTH.
- ⑤ ROUGHEN AND CLEAN THE LEAD SHEATH WITH ABRASIVE CLOTH OR SMOOTH CUT RASP AND REMOVE ALL FOREIGN MATTER FOR A DISTANCE OF 5 INCHES.

FIG. 2



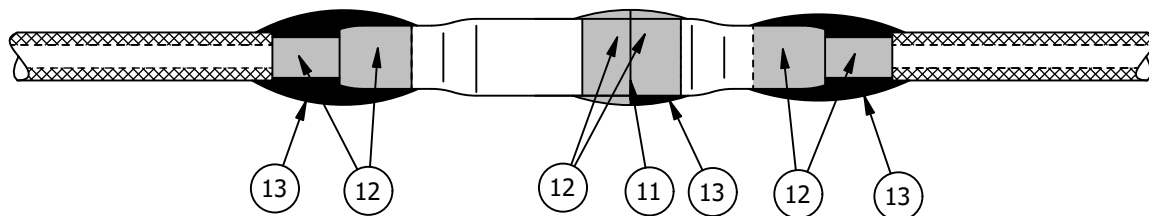
- ⑥ INSERT THE CABLE ENDS INTO THE LIMITER LINK SOCKETS AND INDENT USING THE BURNDY HYPRESS. MAKE ONE INDENT ON CABLE SIZES UP TO 250 MCM AND TWO INDENTS ON ALL CABLE SIZES ABOVE 250 MCM. ROUGHEN AND CLEAN THE LIMITER LINK CABLE SOCKETS WITH STEEL WOOL OR ABRASIVE CLOTH.
- ⑦ APPLY A THIN EVEN COAT OF G.E. 1201 GLYPTAL LACQUER OR EQUIVALENT TO THE LIMITER LINK CABLE SOCKETS, THE PAPER OR VARNISHED-CAMBRIC INSULATION AND ONE INCH OF THE LEAD SHEATH. ALLOW TO DRY FOR ONE MINUTE.
- ⑧ APPLY FOUR HALF-LAPPED LAYERS OF 1/2 INCH WIDE SILK TAPE WITH A COAT OF G.E. 1201 GLYPTAL LACQUER BETWEEN EACH LAYER. THESE SHOULD BE APPLIED IN CONTINUOUS LAYERS OVER THE LIMITER LINK CABLE SOCKETS, THE PAPER OR VARNISHED-CAMBRIC INSULATION AND 3/4 INCH OF THE LEAD SHEATH. ALLOW EACH COAT OF GLYPTAL TO DRY ONE MINUTE BEFORE APPLYING THE NEXT LAYER OF TAPE. APPLY A GOOD COAT OF GLYPTAL TO FINAL LAYER OF TAPE.

FIG. 3



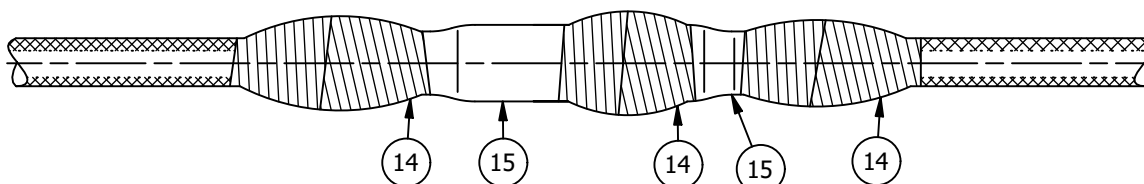
- ⑨ ROUGHEN AND CLEAN BOTH HALVES OF THE INSULATING SLEEVE FOR A LENGTH OF 1-1/2 INCHES ON EACH END.
- ⑩ PLACE THE ASBESTITE SHELLS OVER THE LIMITER LINK, CENTERING THE SHELLS OVER THE FUSIBLE SECTION.

FIG. 4



- ⑪ SLIDE THE INSULATING SLEEVE HALVES TOGETHER OVER THE SHELLS UNTIL THEY INTERLOCK.
- ⑫ APPLY A THIN EVEN COAT OF RUBBER CEMENT TO THE EXPOSED ROUGHENED SURFACES. ALLOW TO DRY ONE MINUTE BEFORE APPLYING RUBBER TAPE.
- ⑬ APPLY THREE HALF-LAPPED LAYERS OF RUBBER TAPE WITH SUFFICIENT TENSION TO REDUCE ITS WIDTH FROM 3/4 INCH TO 1/2 INCH. ON BOTH ENDS, WRAP RUBBER TAPE IN CONTINUOUS LAYERS FOR A LENGTH OF 1-1/2 INCHES OVER THE LEAD SHEATH AND 1-1/2 INCHES OVER THE INSULATING SLEEVE. AT THE POINT WHERE THE TWO HALVES INTERLOCK, WRAP 1-1/2 INCHES OF RUBBER TAPE OVER EACH END.

FIG. 5



- ⑭ COMPLETELY COVER THE RUBBER TAPE WITH TWO HALF-LAPPED LAYERS OF FRICTION TAPE APPLIED WITH CONSIDERABLE TENSION IN ORDER TO COMPRESS THE RUBBER TAPE. THE FRICTION TAPE SHALL EXTEND 3/4 INCH OVER THE RUBBER TAPE ON THE INSULATING SLEEVE AND THE LEAD SHEATH.
- ⑮ PAINT THE ENTIRE SPLICE WITH WATERPROOF INSULATING PAINT.

TO ORDER BURNDY® PRODUCTS
CALL

UNITED STATES
1-800-346-4175 (LONDONDERRY,
NH)

CANADA:
1-800-361-6975 (QUEBEC)
1-800-387-6487 (ALL OTHER PROVINCES)
FOR PRODUCT INFO: <http://www.burndy.com>

INSTALLATION INSTRUCTION CABLE TO LIMITER			
ITEM NO:	--		
CAT. NO:	--		
SCALE:	DRAWING SCALE		
SIZE	DRAWING NO	REV	
B	50075049	B	
SHEET 3 OF 4			

**INSTALLATION INSTRUCTIONS FOR CABLE LONG LIMITER
WHEN USED WITH PAPER INSULATED OR VARNISHED CAMBRIC LEAD COVERED CABLE**

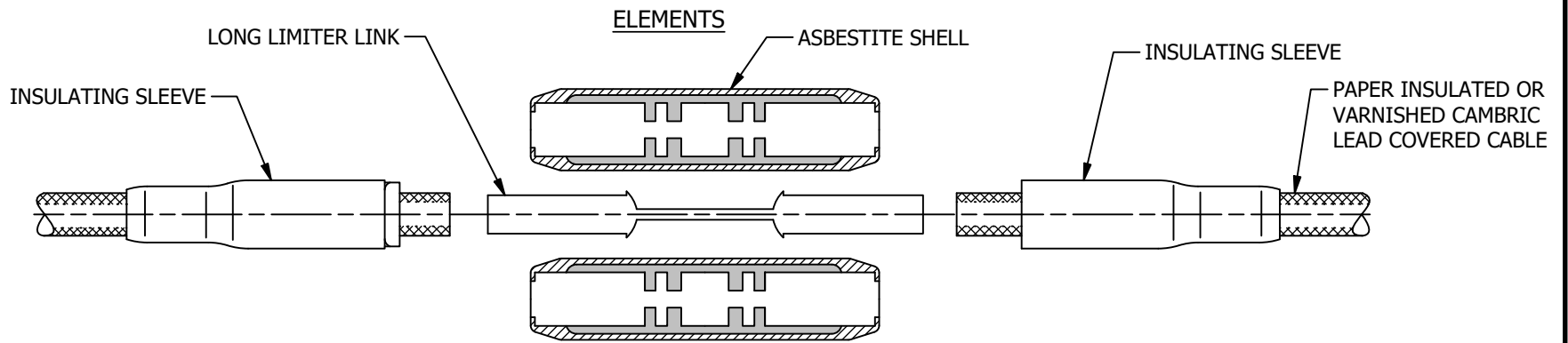
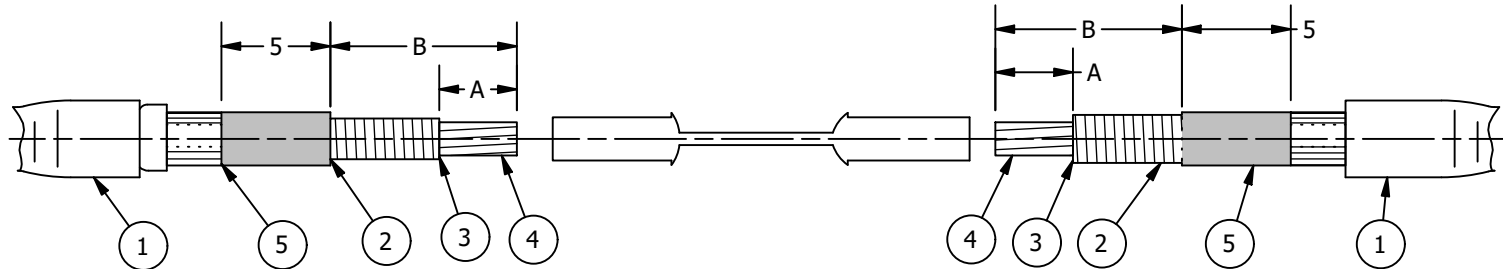
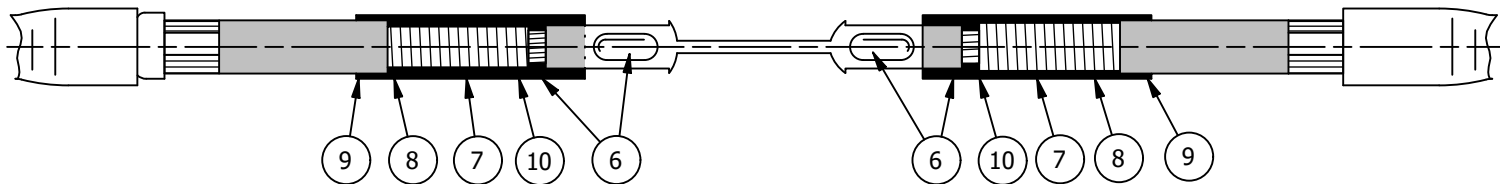


FIG. 1



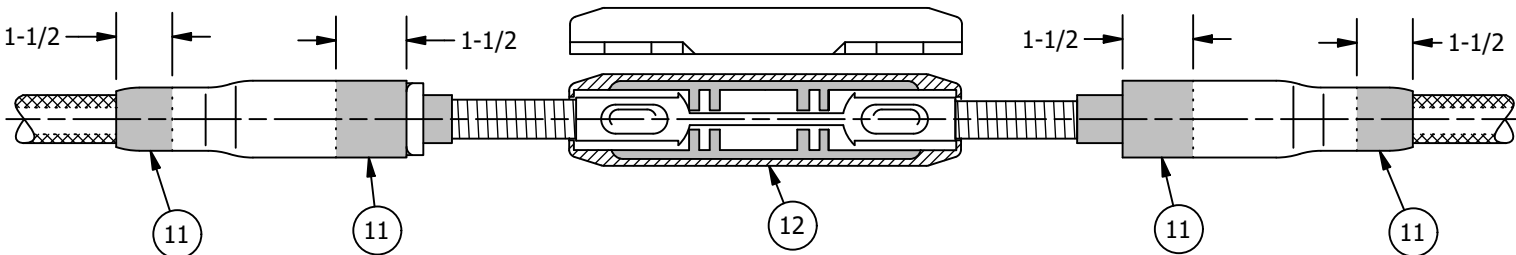
- ① SLIDE THE INSULATING SLEEVE HALVES OF THE LIMITER OVER THE CABLE ENDS.
- ② REMOVE THE LEAD SHEATH FOR A DISTANCE "B" EQUAL TO 5-1/2 INCHES ON CABLE SIZES FROM 4/0 TO 400 MCM AND 6-1/4 INCHES FOR 500 MCM AND 750 MCM. THE LEAD SHEATH SHOULD BE REMOVED FROM THE CABLE ENDS AS FOLLOWS: CUT HALF WAY THROUGH THE LEAD SHEATH FOR A DISTANCE "B" FROM THE END OF THE CABLE; SPLIT THE SHEATH LENGTHWISE FROM THE END TO THE CUT; THEN, TEAR LOOSE THE SECTION OF SHEATH BY PULLING ON ONE EDGE WITH PLIERS DIRECTLY AWAY FROM THE CABLE AXIS. A SLIGHT BELL WILL RESULT WHICH SHOULD NOT BE REMOVED.
- ③ REMOVE THE PAPER OR VARNISHED-CAMBRIC INSULATION FROM THE CABLE STRANDS FOR A DISTANCE "A" EQUAL TO 3-3/4 INCHES ON CABLE SIZES FROM 4/0 TO 400 MCM AND 4-1/2 INCHES ON 500 MCM AND 750 MCM.
- ④ CLEAN THE CABLE STRANDS WITH STEEL WOOL OR ABRASIVE CLOTH.
- ⑤ ROUGHEN AND CLEAN THE LEAD SHEATH WITH ABRASIVE CLOTH OR SMOOTH CUT RASP AND REMOVE ALL FOREIGN MATTER FOR A DISTANCE OF 5 INCHES.

FIG. 2



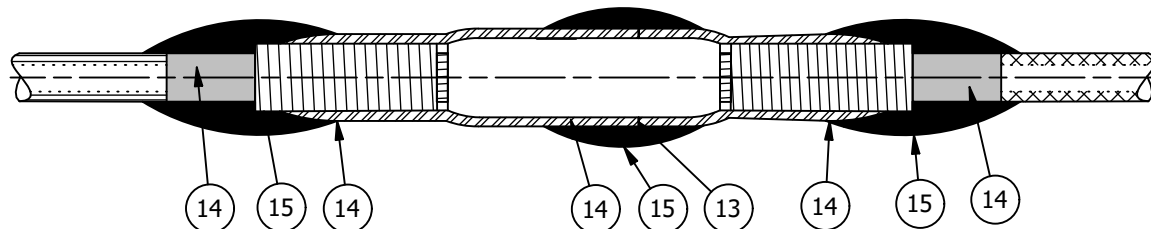
- ⑥ INSERT THE CABLE INTO THE LIMITER LINK SOCKETS AND INDENT USING THE BURNDY HYPRESS. MAKE ONE INDENT ON CABLE SIZES UP TO 250 MCM AND TWO INDENTS ON ALL CABLE SIZES ABOVE 250 MCM. THE INDENTS SHOULD BE MADE ON THE CABLE SOCKETS CLOSE TO THE FUSIBLE SECTION SO AS TO PERMIT AT LEAST ONE INCH OF THE CABLE SOCKETS TO REMAIN UNDEFORMED. THEN ROUGHEN THE CABLE SOCKETS WITH STEEL WOOL OR ABRASIVE CLOTH.
- ⑦ APPLY A THIN EVEN COAT OF G.E. 1201 GLYPTAL LACQUER OR EQUIVALENT TO THE EXPOSED PAPER OR VARNISHED-CAMBRIC INSULATION.
- ⑧ APPLY WRAPPINGS OF 3/4 INCH WIDE SILK TAPE OVER THE BARE CABLE AND PAPER OR VARNISHED-CAMBRIC INSULATION. BUILD UP THE SILK TAPE TO THE DIAMETER OF THE LEAD SHEATH.
- ⑨ APPLY A THIN EVEN COAT OF G.E. 1201 GLYPTAL TO THE LIMITER LINK CABLE SOCKETS, THE SILK TAPE AND ONE INCH OF THE LEAD SHEATH. ALLOW TO DRY FOR ONE MINUTE.
- ⑩ APPLY FOUR HALF-LAPPED LAYERS OF 1/2 INCH WIDE SILK TAPE WITH A COAT OF G.E. 1201 GLYPTAL LACQUER BETWEEN EACH LAYER. THESE SHOULD BE APPLIED IN CONTINUOUS LAYERS OVER THE LIMITER LINK CABLE SOCKETS, THE SILK TAPE AND 3/4 INCH OF THE LEAD SHEATH. ALLOW EACH COAT OF GLYPTAL TO DRY ONE MINUTE BEFORE APPLYING NEXT LAYER OF TAPE. APPLY A GOOD COAT OF GLYPTAL TO FINAL LAYER OF TAPE.

FIG. 3



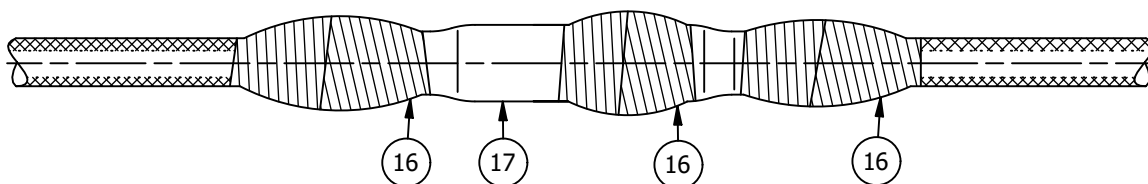
- ⑪ ROUGHEN AND CLEAN BOTH ENDS OF THE INSULATING SLEEVE FOR A LENGTH OF 1-1/2 INCHES AND 1-1/2 INCHES OF THE LEAD SHEATH.
- ⑫ PLACE THE ASBESTITE SHELLS OVER THE LIMITER LINK, CENTERING THE SHELLS OVER THE FUSIBLE SECTION.

FIG. 4



- ⑬ SLIDE THE SLEEVE HALVES TOGETHER OVER THE SHELLS UNTIL THEY INTERLOCK.
- ⑭ APPLY A THIN EVEN COAT OF RUBBER CEMENT TO THE EXPOSED ROUGHENED SURFACES. ALLOW TO DRY ONE MINUTE BEFORE APPLYING RUBBER TAPE.
- ⑮ APPLY THREE HALF-LAPPED LAYERS OF RUBBER TAPE WITH SUFFICIENT TENSION TO REDUCE ITS WIDTH FROM 3/4 INCH TO 1/2 INCH. ON BOTH ENDS, WRAP RUBBER TAPE IN CONTINUOUS LAYERS FOR A LENGTH OF 1-1/2 INCHES OVER THE INSULATING SLEEVE, THE SILK TAPE AND 1-1/2 INCHES OF THE LEAD SHEATH. AT THE POINT WHERE THE TWO HALVES INTERLOCK, WRAP 1-1/2 INCHES OF RUBBER TAPE OVER EACH END.

FIG. 5



- ⑯ COMPLETELY COVER THE RUBBER TAPE WITH TWO HALF-LAPPED LAYERS OF FRICTION TAPE APPLIED WITH CONSIDERABLE TENSION IN ORDER TO COMPRESS THE RUBBER TAPE. THE FRICTION TAPE SHELL EXTEND 3/4 INCH OVER THE RUBBER TAPE ON THE INSULATING SLEEVE AND ON THE LEAD SHEATH.
- ⑰ PAINT THE ENTIRE SPLICE WITH WATERPROOF INSULATING PAINT.

TO ORDER BURNDY® PRODUCTS
CALL

UNITED STATES
1-800-346-4175 (LONDONDERRY,
NH)

CANADA:
1-800-361-6975 (QUEBEC)
1-800-387-6487 (ALL OTHER PROVINCES)
FOR PRODUCT INFO: <http://www.burndy.com>

INSTALLATION INSTRUCTION CABLE TO LIMITER			
ITEM NO: --		CAT. NO: --	
SCALE: DRAWING SCALE		REV: B	
SIZE: B	DRAWING NO: 50075049	SHEET 4 OF 4	
			BURNDY®