

Shear Bolt WEJTAP™ with Captive Interface Connector

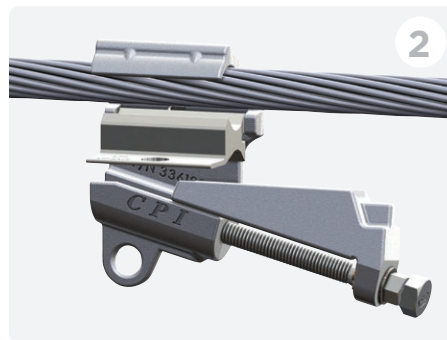
Pre-install checklist

- ☐ Verify you understand your utility's safety practices and methods.
- ☐ Confirm conductor size, stranding, and type.
- ☐ Confirm the connector catalogue number matches applicable standards and/or is compatible with the wire sizes.
- ☐ Verify tooling has a 3/4 and/or 9/16 socket.
- ☐ Strip covered conductor.
- ☐ Wire brush both conductors to remove oxides for optimal connector performance.

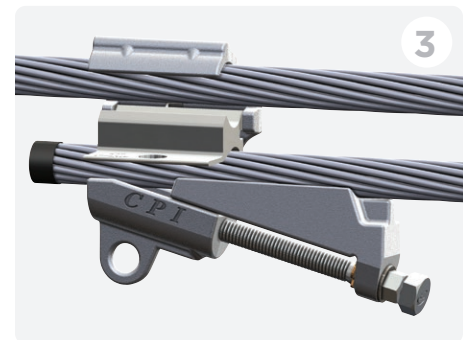
Installation



Gently unscrew the bolt to the fully open position.



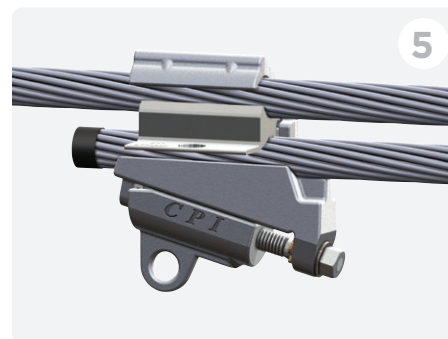
Place the connector on the main, or larger, wire brushed conductor.



Install the tap, or smaller wire brushed conductor (from the end or the side), and hold in place.



Using a 3/4 or 9/16 socket, tighten the outer bolt until it shears.



Installation is now complete.
To remove the connector, use a 9/16 socket to unscrew the bolt completely and remove the assembly.