

Flush Mount

Mounting of DPLP Series Exit Sign to Surface

1. Place sign face down and drill four holes through sign where guide marks are found in each corner of sign back.
2. Place the exit sign in position and mark the screw hole locations on the surface. Then drill four 3/16" holes into surface.
3. If anchors will be required, install them at this time (supplied).
4. Attach the exit sign to the surface by using the four supplied phillip head screws. Be careful not to over tighten the screws.
5. If directional arrows are to be used, apply them to the exit sign at this time.
 - a. First snap on the arrow stencil provided to the sign face where small tabs are present on each side of the E and the T as appropriate. Then remove the self adhesive backing from the photoluminescent arrow provided and adhere inside the arrow stencil.
 - i. For exit paths straight ahead, no arrows are needed.
 - ii. For exit paths to the left, apply the arrow on the left side of the exit sign.
 - iii. For exit paths to the right, apply the arrow on the right side of the exit sign.
 - iv. If exit paths are located to the left and right, apply both arrows to the exit sign.

Flag, Ceiling, or T-Bar Mount

Installation Instructions for the DPLP Series Exit Sign

1. If directional arrows are to be used, apply them to the exit sign at this time.
 - a. First snap on the arrow stencil provided to the sign face where small tabs are present on each side of the E and the T as appropriate. Then remove the self adhesive backing from the photoluminescent arrow provided and adhere inside the arrow stencil.
 - i. For exit paths straight ahead, no arrows are needed.
 - ii. For exit paths to the left, apply the arrow on the left side of the exit sign.
 - iii. For exit paths to the right, apply the arrow on the right side of the exit sign.
 - iv. If exit paths are located to the left and right, apply both arrows to the exit sign.

FOR FLAG MOUNT

2. Place the exit sign bracket in position and mark the screw hole locations. Drill four each 3/16" holes.
3. If anchors will be required, install them at this time (supplied).
4. Attach the exit sign bracket to the wall using the screws provided.
5. Drill two each 3/32" holes through the sign where indicated by the alignment marks found on the side of the sign back.
6. Position the exit sign against the mounting bracket and align the holes.
7. Secure the exit sign to the bracket by inserting the bolts and tightening the acorn nuts which are supplied with the sign.

FOR CEILING MOUNT

2. Place the exit sign bracket in position and mark the screw hole locations. Drill four each 3/16" holes.
3. If anchors will be required, install them at this time (supplied).
4. Attach the exit sign bracket to the ceiling using the supplied screws.
5. Drill two each 3/32" holes through the sign where indicated by the alignment marks near the top of the sign back.
6. Position the exit sign against the mounting bracket and align the holes.
7. Secure the exit sign to the bracket by inserting the bolts and tightening the acorn nuts which are supplied with the sign.

FOR T-BAR MOUNT

2. Place the exit sign bracket in position and attach to the T-Bar using the supplied T-Bar clips.
3. Drill two each 3/32" holes through the face where indicated by the alignment marks near the top of the sign back.
4. Position the exit sign against the mounting bracket and align the holes.
5. Secure the exit sign to the bracket by inserting the bolts and tightening the acorn nuts which are supplied with the sign.



RECYCLING INFORMATION

All steel, aluminum and thermoplastic parts are recyclable.
NOTICE: Emergency units contain rechargeable batteries which must be recycled or disposed of properly.

Hubbell Lighting, Inc. Life Safety Products • www.dual-lite.com

Copyright © Hubbell Lighting, Inc., All Rights Reserved • Specifications subject to change without notice. • Printed in U.S.A.

DPLP100 0604088_A 09/18



DPLP Series

UL 924 LISTED PHOTOLUMINESCENT EXIT SIGN

Notice:

External Illumination Source Required

Activation

Minimum 5-foot candles (54 lux) of unfiltered fluorescent, LED, metal halide, or mercury vapor lighting.

Install DPLP Series Photoluminescent exit signs only in locations where an external illumination source is present, is deemed reliable and is supplied by a circuit not controlled by automatic timers or sensors, and whose controls are accessible only to authorized personnel. This reliable external illumination source is to be energized at all times during building occupancy.

DPLP Series Photoluminescent exit signs are UL 924 Listed for high location, floor proximity and INDOOR/OUTDOOR, wet location use.

Check with your applicable installation codes (such as NFPA 101 – Life Safety Code) to perform periodic visibility tests.

Should any changes in your external lighting types or lighting levels occur, make sure that the DPLP Series exit sign is still being illuminated with a minimum of 5-foot candles (54 lux) of unfiltered LED, fluorescent, metal halide, or mercury vapor lighting.

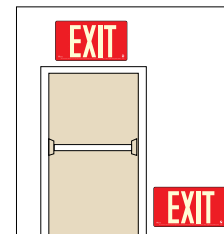
Periodically clean sign face with a damp cloth. Do not use any thinners or solvents on the sign face.

Viewing Distance

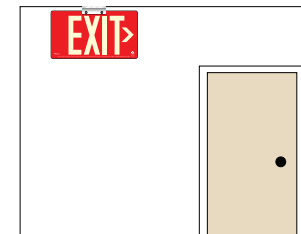
100 foot viewing distance

Directional Indicators

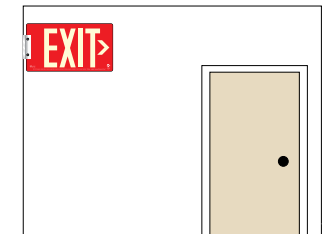
Two self-adhesive photoluminescent directional indicators are supplied with each sign. Small tabs are provided to the left of the letter E and to the right of the letter T for easy alignment. If your exit sign is to be located other than directly over an exit, apply a directional indicator to the left of the E, pointing left, or to the right of the T, pointing right, or both, as appropriate.



SURFACE MOUNT
UPPER OR LOWER



CEILING MOUNT



FLAG MOUNT