



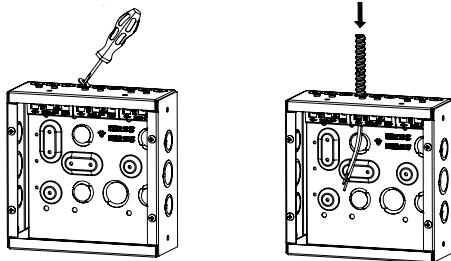
INSTALLATION INSTRUCTIONS

Grand Slam® with Stab-IT® II Connectors

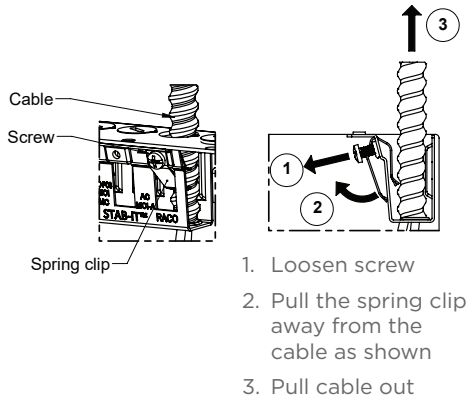
Features may vary by model

Cable Insertion

1. Remove pryout with a flat screwdriver
2. Push in cable until it stops

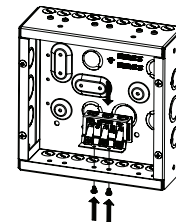


Removal of Cables

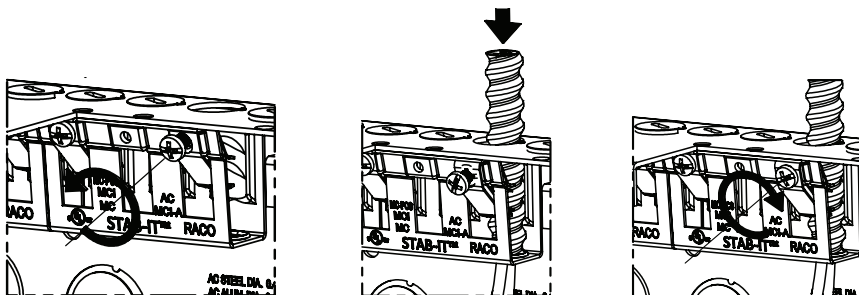


Reposition Stab-IT II Connector

- Align (2) holes from the Stab-IT II connector with the (2) holes in the box of the desired location
- Reattach it with the (2) screws

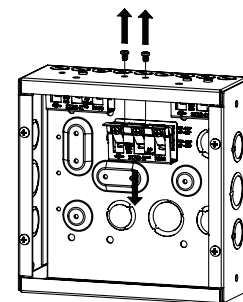


Installation of Larger Diameter Cables



1. Loosen up screw
2. Push in cable until it stops
3. Tighten up screw

Removing Stab-IT II Connector



- Identify the Stab-IT II connector to be removed
- Remove (2) screws
- Remove Stab-IT II connector

Cable Types and Ranges For Stab-IT II Clamp

Cable Type	Cable Range	Cable Dia. Range
AC Steel	14-2, 14-3, 14-4, 12-2, 12-3, 12-4, 10-2, 10-3	0.44" · 0.62"
HCF AC Steel	12-2, 12-3, 10-2, 10-3	
AC Aluminum	14-2, 14-3, 14-4, 12-2, 12-3, 12-4, 10-2, 10-3	0.42" · 0.62"
HCF AC Aluminum	12-2, 12-3, 12-4, 10-2, 10-3	
MC Steel	14-2, 14-3, 14-4, 12-2, 12-3, 12-4, 10-2, 10-3	
MCI-A Steel	14-2, 12-2, 12-3, 12-4, 10-2, 10-3	
HCF MCI-A Steel	12-2, 12-3, 10-2	0.38" · 0.62"
MC-PCS Steel	12-2/16-2, 12-3/16-2, 10-2/16-2	
MC Aluminum	14-2, 14-3, 14-4, 12-2, 12-3, 12-4, 10-2, 10-3	
MCI-A Aluminum	14-2, 14-3, 14-4, 12-2, 12-3, 12-4, 10-2, 10-3	
HCF MCI-A Aluminum	12-2, 12-3, 12-4, 10-2, 10-3	
MC-PCS Aluminum	12-2/16-2, 12-3/16-2, 10-2/16-2	

3/8 Trade Size Flex. RWFCM Conduit Steel & Aluminum (Anti Short Bushings Required)

Cable Armor must comply with NEC 250.96. To install larger diameter cables (if needed) loosen up screw, insert cable, tighten up screw and push in cable until it snaps into place as shown on instruction. To remove cable: Loosen up screw, pull spring clip away from cable and pull cable out. See instruction sheet. To install more cables use any of the knockouts with RACO® 38RAC or 40RAC push in cable connector.

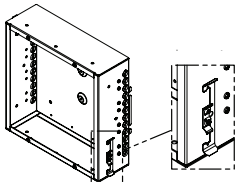
Hanging Raco Grand Slam Boxes Using Threaded Rods (Not Included)

Features may vary by model

Vertical Installation

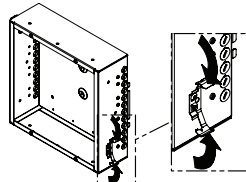
Step 1

Locate the Multi-Function (MF) clip and reposition it if desired



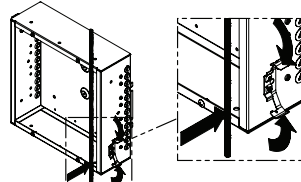
Step 2

Bend the MF clip end tabs as shown and hold them



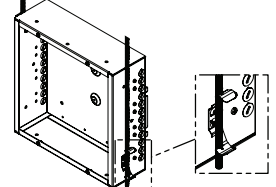
Step 3

While holding the MF clip end tabs, slide the threaded rod inside the clip as shown



Step 4

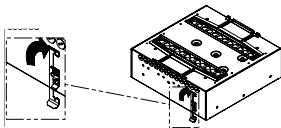
Once the threaded rod is in position, release the MF end tabs to lock it in place. Repeat the same process for the MF clip in the opposite side



Horizontal Installation

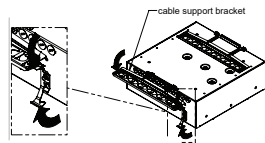
Step 1

Locate the Multi-Function (MF) clip and rotate it 90° as shown. Reposition it if desired



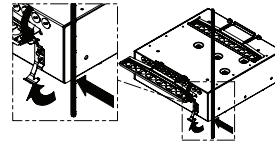
Step 2

First unfold the cable support bracket, then bend the MF clip end tabs as shown and hold them



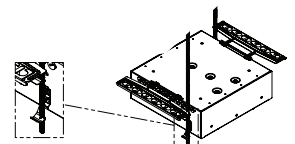
Step 3

While holding the MF clip end tabs, slide the threaded rod inside the clip as shown



Step 4

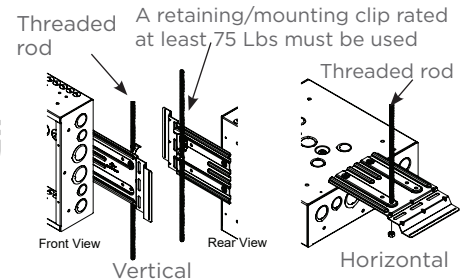
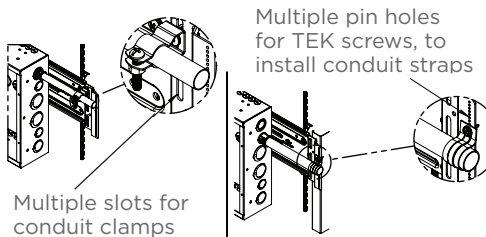
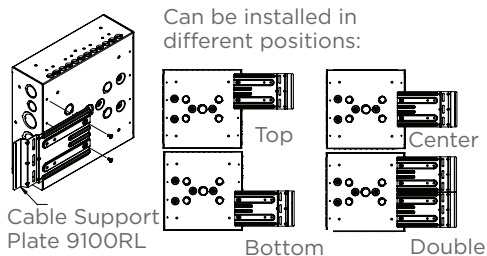
Once the threaded rod is in position, release the MF end tabs to lock it in place. Repeat the same process for the MF clip in the opposite side



RACO Conduit Support Plate 9100SP with Grand Slam Boxes

Threaded rod, hardware, clamps, straps or retaining/mounting clip not included

Threaded Rod Installation (If required by local code)

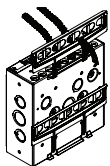


For a surface mounting application, the cable support plate 9100SP must be attached to the building structure

RACO Cable Management with GRAND SLAM boxes

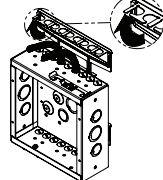
Step 1

Bend up cable support bracket needed until it stops



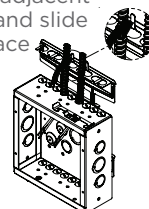
Step 2

Rotate center piece 90° as shown



Step 3

Bend up tabs adjacent to cables 90° and slide cables into place



Step 4

Bend down tabs adjacent to cables 90° to lock cables in position

