

## Installation Instructions

### Door Frame Connectors:

1. **Door Hinges:** One half of the door frame contains two hinges. These hinges can be seen in Figures 2, 3, 4, and 5. These hinges can bend and often need readjustment for proper installation.
2. **Door Latches:** The other half of the door frame contains two latches. These latches can be seen in Figures 9 and 10. The latches do not always secure themselves and need to be fully pushed down for proper installation.



Figure 1. LEPC/EPC Fixture

### Door Hinges:

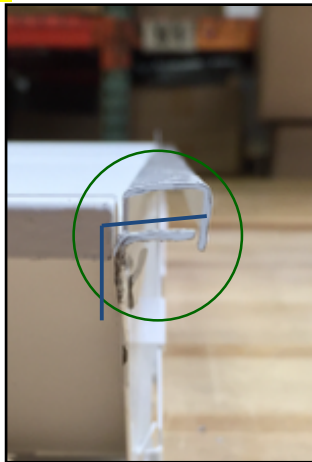


Figure 2. Hinge Front View  
(Correctly aligned)



Figure 3. Hinge Front View  
(Incorrectly Aligned)

**Notice:** The edges of the hinge follow the **blue** lines displayed in Figures 2, 4, and 5

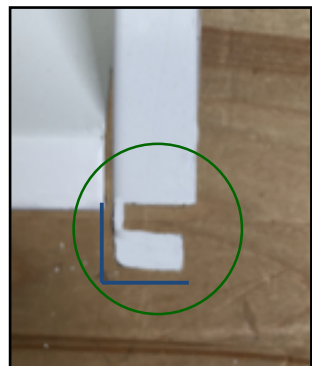


Figure 4. Hinge Top View  
(Correctly aligned)

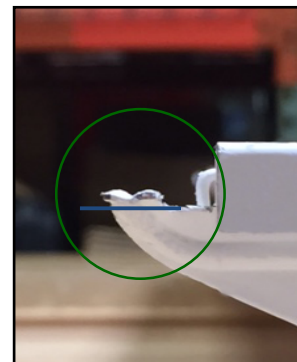


Figure 5. Hinge Side View  
(Correctly aligned)

For hinge readjustment, it is recommended to use pliers.

**Caution:** Using pliers or other tools may cause paint to chip off of the hinges. When installed correctly, the hinges will not be visible.

### Connecting Hinges to Housing:

Once the hinges are readjusted, this half of the door frame can be connected to the housing of the fixture.

Figure 6 shows the first step of the connection. There is a small cut out on both sides of the fixture for each hinge to slide through.



Figure 6. Connection of the right hinge to the housing.

**Notice:** In Figure 6, there is a gap between the door frame and the side of the housing.

Figure 7 shows this gap being closed by sliding the door frame towards the housing as far as possible.



Figure 7. Hinges slid backwards towards side of housing.

Once the door frame is slid over as far as possible, it can be rotated to connect the side with the latches to the housing.

The hinges should move again when rotating the door frame. This movement should lock the hinges into place. When the hinges do lock into place, the side of the fixture will appear as it does in Figure 8.

**Caution:** If the hinges do not move upward (when the fixture is on the ground) or downward (when the fixture is hanging) to lock into place, then the door frame can come loose and fall.



Figure 8. No gap between door frame and side of housing.

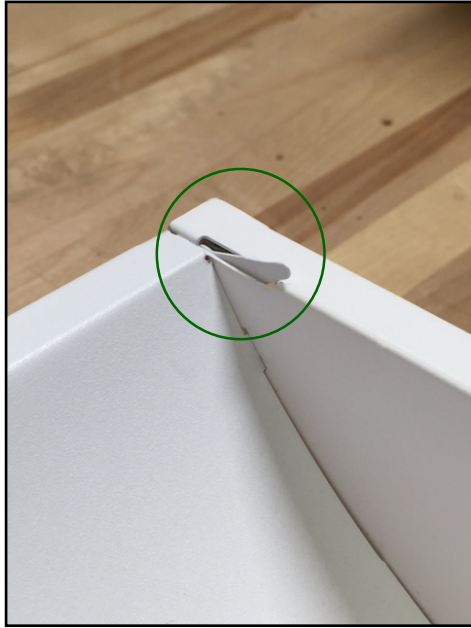
**Door Latches:**

When connecting the latches, the only important step is to **ensure the latch is pushed in as far as possible**.

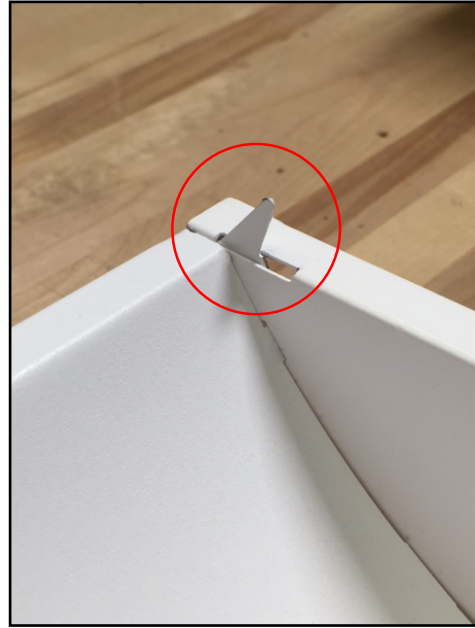
The installer should be able to feel the latch wrap around and lock into part of the housing.

Figure 9 and 10 show the latch of the door frame pushed in and pushed out respectively.

**Caution:** If the latches are not pushed in all the way and/or do not lock into place, then the door frame can come loose and fall.



**Figure 9.** Door latch pushed all the way in.  
(Proper connection)



**Figure 10.** Door latch not pushed in.  
(Improper connection)