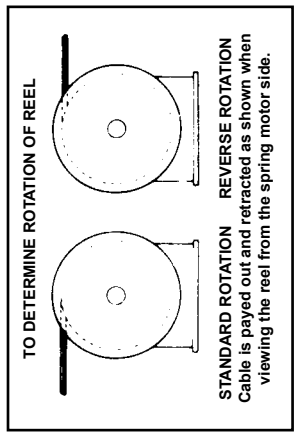
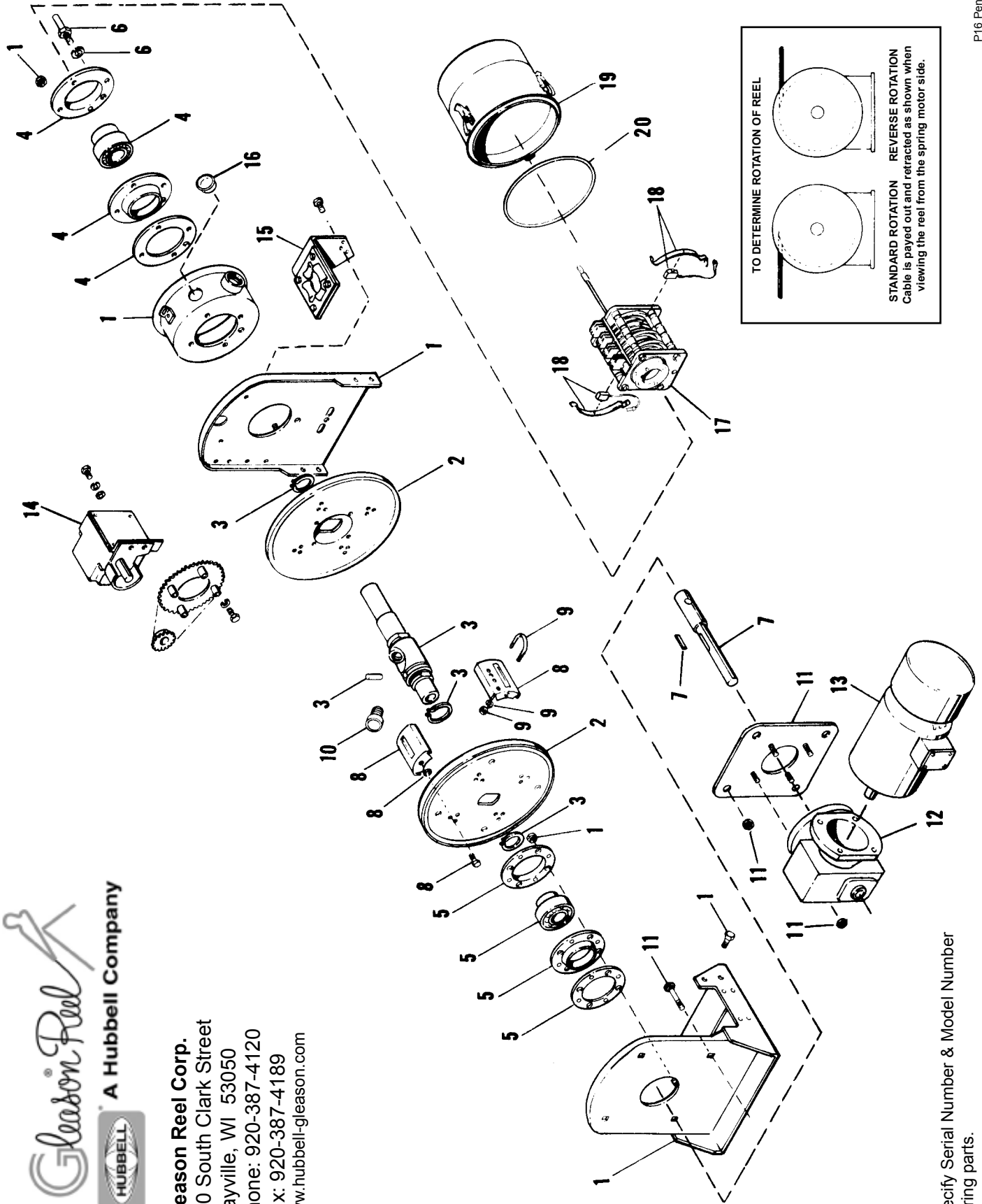


P16 ELECTRIC CABLE REEL REPLACEMENT PARTS



Gleason Reel Corp.
600 South Clark Street
Mayville, WI 53050
Phone: 920-387-4120
Fax: 920-387-4189
www.hubbell-gleason.com



Always specify Serial Number & Model Number when ordering parts.

P16 ELECTRIC CABLE REEL REPLACEMENT PARTS

ITEM	PART NO.	DESCRIPTION	QTY.	
1	012391	Frame Assembly	1	
		Frame Weldment	1	
		Vertical Frame	1	
		Collector Entrance Assembly	1	
		"Taptite" Screw, .31 - 18 x .62	4	
		Lockwasher .31	4	
		ESNA Nut .31 - 18	8	
2	012404	Discs	1	
		Disc - Drive End	1	
		Disc - Collector End	1	
3	012397	Main Shaft Assembly	1	
		Main Shaft	1	
		Stub Shaft Drive Pin	1	
		Retaining Ring	1	
		Retaining Ring	2	
4	012402	Bearing Kit - 2" Bore	1	
		Bearing - 2" Bore	1	
		Housing	1	
		Housing	1	
		Gasket	1	
5	012401	Bearing Kit - 1 3/4" Bore	1	
		Bearing 1 3/4" Bore	1	
		Housing	2	
		Gasket	1	
6	012456	Drive Stud Kit	1	
		Drive Stud Assembly	1	
		Lockwasher .44	1	
7	015745	Stub Shaft, .25 HP & .50 HP	1	
		Stub Shaft	1	
		Key	1	
	015746	Stub Shaft, .75 HP & 1.50 HP	1	
8	012416	Wrapper Kit - 5" Wide, 8" to 14" Dia.	1	
		Drum Wrapper 5.00	3	
		Drum Wrapper (Clamp)	1	
		Lockwasher .31	8	
			Hex. Hd. Capscrew .31 - 18 x .50	8
	012417	012417	Wrapper Kit - 5" Wide 15" to 20" Dia.	1
			Drum Wrapper 5.00	6
			Drum Wrapper (Clamp)	2
Lockwasher .31			16	
		Hex. Hd. Capscrew .31 - 18 x .50	16	
9	012444	Cable Clamp Kit - .38 - .74 Dia. Cable	1	
		U-Bolt	1	
		Lockwasher .25	2	
		Nut Fin Hex. .25 - 20	2	
			012445	Cable Clamp Kit - .75 - 1.111 Dia. Cable
	012446	Cable Clamp Kit - 1.12 - 1.50 Dia. Cable	1	
10	012459	Cable Connector .38 - .50 Cable Dia.	1	
		Cable Connector .50 - .62 Cable Dia.	1	
		Cable Connector .62 - .75 Cable Dia.	1	
		Cable Connector .75 - .88 Cable Dia.	1	
		Cable Connector .88 - 1.00 Cable Dia.	1	
		Cable Connector 1.00 - 1.12 Cable Dia.	1	
		Cable Connector 1.12 - 1.25 Cable Dia.	1	
		Cable Connector 1.25 - 1.38 Cable Dia.	1	
		Cable Connector 1.38 - 1.50 Cable Dia.	1	
11	015747	Adapter Plate Kit, .25 HP	1	
		Adapter Plate	1	

ITEM	PART NO.	DESCRIPTION	QTY.		
		ESNA Nut .31 - 18	4		
		Carriage Bolt .50 - 13 x 2.00	4		
		ESNA Nut .50 - 13	4		
	015748	Adapter Plate Kit .50 HP	1		
	015749	Adapter Plate Kit .75 HP	1		
	015750	Adapter Plate Kit 1.50 HP	1		
12	700349	Reducer, Gear .25 HP	1		
		Reducer, Gear .50 HP	1		
		Reducer, Gear .75 HP	1		
		Reducer, Gear 1.50 HP	1		
13	700353	Brake Motor, .25 HP	1		
		Brake Motor, .50 HP	1		
		Brake Motor, .75 HP	1		
		Brake Motor, 1.50 HP	1		
14	012092	Rotary Limit Switch	1		
15	012082	Roller Guide Assy.	1		
16	012457	Button Plug	1		
17	012285	Collector Assembly, 2 Poles, 35 Amps.	1		
		012286	Collector Assembly, 3 Poles, 35 Amps.	1	
	012287	Collector Assembly, 4 Poles, 35 Amps.	1		
	012288	Collector Assembly, 6 Poles, 35 Amps.	1		
	012289	Collector Assembly, 8 Poles, 35 Amps.	1		
	012290	Collector Assembly, 10 Poles, 35 Amps.	1		
	012291	Collector Assembly, 12 Poles, 35 Amps.	1		
	012292	Collector Assembly, 14 Poles, 35 Amps.	1		
	012293	Collector Assembly, 16 Poles, 35 Amps.	1		
	012294	Collector Assembly, 20 Poles, 35 Amps.	1		
	012295	Collector Assembly, 24 Poles, 35 Amps.	1		
	012296	Collector Assembly, 30 Poles, 35 Amps.	1		
	012297	Collector Assembly, 36 Poles, 35 Amps.	1		
	012298	Collector Assembly, 2 Poles, 75 Amps.	1		
	012299	Collector Assembly, 3 Poles, 75 Amps.	1		
	012300	Collector Assembly, 4 Poles, 75 Amps.	1		
	012376	Collector Assembly, 6 Poles, 75 Amps.	1		
	012377	Collector Assembly, 8 Poles, 75 Amps.	1		
	037194	Collector Assembly, 2 Poles, 125 Amps.	1		
	037294	Collector Assembly, 3 Poles, 125 Amps.	1		
	037295	Collector Assembly, 4 Poles, 125 Amps.	1		
	012304	Collector Assembly, 2 Poles, 200 Amps.	1		
	012381	Collector Assembly, 3 Poles, 200 Amps.	1		
	012382	Collector Assembly, 4 Poles, 200 Amps.	1		
	012383	Collector Assembly, 6 Poles, 200 Amps.	1		
	012384	Collector Assembly, 8 Poles, 200 Amps.	1		
18	012440	Brush Kit (35 Amp.)	1		
		Brush	4		
		Finger	4		
		012441	Brush Kit (75 Amp.)	1	
	012443	Brush Kit (125 Amp./200 Amp.)	1		
19	012409	Collector Cover Kit (8" long)	1		
		Collector Cover Kit Assembly	1		
		Seal Ring	1		
		012410	Collector Cover Kit (10.5" long)	1	
		012411	Collector Cover Kit (13" long)	1	
		012412	Collector Cover Kit (15.5" long)	1	
		012413	Collector Cover Kit (20.5" long)	1	
		012414	Collector Cover Kit (28.5" long)	1	
		20	012458	Seal Ring	1