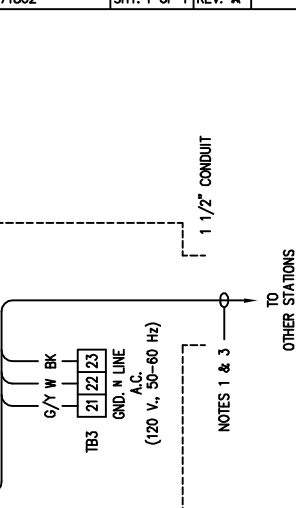
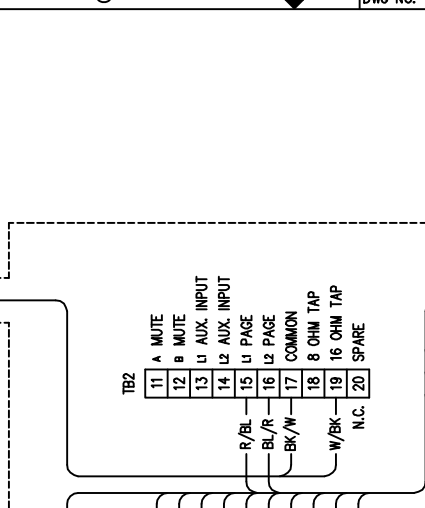
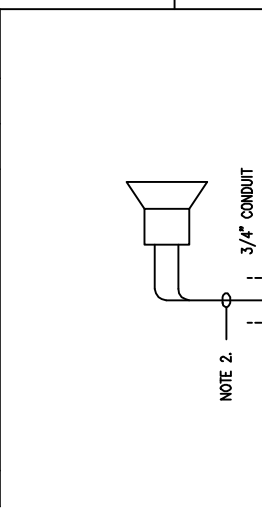


REVISION			
REV.	DESCRIPTION	ENGR. APVD.	DATE
A	INITIAL RELEASE, NEVER PRELIM. / LTH	LTH	PHW 11/29/94

THIS DOCUMENT AND ITS CONTENTS ARE THE PROPERTY OF GAI-TRONICS CORPORATION (GTC), AND SHALL NOT BE REPRODUCED, COPIED, EITHER WHOLLY OR IN PART, DISCLOSED, DIRECTLY OR INDIRECTLY, IN WHOLE OR IN PART, THE DOCUMENT/CONTENTS, EXCEPT STRICTLY AS AUTHORIZED BY GTC.



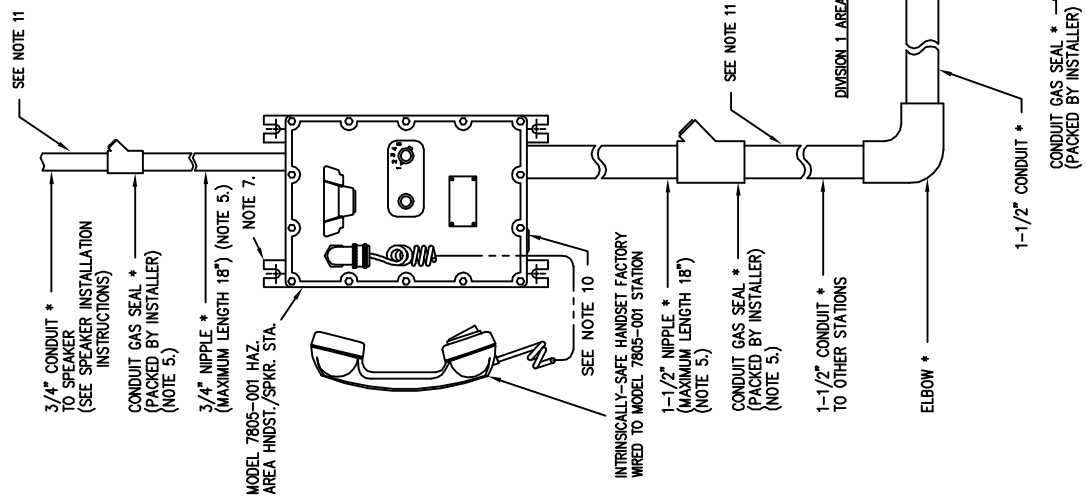
APPLICABLE FOR CSA APPROVED INSTALLATIONS ONLY

Pub. 42004-239 INSTALLATION DRAWING

JOB DWG. No.		GAI-TRONICS CORPORATION	
CONTRACT No.		READING, PA. 19603	
MATERIAL		MODEL 7805-001	
APPROVALS		DIV. I HAZ. AREA HNDST/SPKR. STA.	
DRAWN	LTH	DATE	11/29/94
ENGR.	LTH	SIZE / FSCH. No.	C
DO NOT SCALE DWG.	APVD.	PHW	11/29/94
SCALE N/A		DWG NO.	71802
		SHEET	1 OF 1

NOTES:

- COLOR CODE OF SYSTEM CABLE BASED ON GAI-TRONICS CORP. No. 60029-101 16-CONDUCTOR CABLE. WHERE STATIONS CAN BE SAFELY GROUNDED LOCALLY, No. 60024-201 14-CONDUCTOR CABLE (LACKING GREEN AND ORANGE CONDUCTORS) MAY BE USED.
- COLOR CODE OF SPEAKER CABLE BASED ON GAI-TRONICS CORP. No. 60021-301 2-CONDUCTOR CABLE (TWISTED PAIR #18 AWG). CONNECTION SHOWN FOR 16 OHM SPEAKER. MOVE W/BK WIRE FROM TERMINAL #19 TO TERMINAL #18 FOR 8 OHM SPEAKER.
- THE NOTATION COLOR #1 / COLOR #2 (e.g. R/BL) DENOTES BASIC WIRE COLOR #1 WITH COLOR #2 STRIPE.
- SUGGESTED MOUNTING HEIGHT OF STATION (FROM CENTERLINE OF STATION TO FLOOR): 54 INCHES (1400 mm).
- EXTERNAL CONDUITS IN CLASS I; DIV. I; GROUPS C & D AREAS TO HAVE GAS SEALS NOT MORE THAN 18 INCHES (457 mm) FROM STATION. EXTERNAL CONDUITS IN CLASS II AND CLASS III AREAS TO HAVE SEALS IF CONDUIT SYSTEM IS NOT DUST-TIGHT.
- COMPONENTS USED TO FORM THIS STATION MAY BE REARRANGED BY INSTALLER FOR TOP ENTRY OF SYSTEM CONDUIT BY FOLLOWING THESE INSTRUCTIONS:
 - MOUNT REAR PART OF HOUSING INVERTED.
 - INVERT P.C.B. SUB-ASSEMBLY INSIDE REAR HOUSING TO RETURN IT TO PROPER ORIENTATION.
- WHEN OPTIONAL WEATHERPROOF CABINET IS USED, THE MOUNTING STRAPS ARE NOT USED. THE MOUNTING SCREWS (4) PROVIDED WITH THE STATION ARE USED TO MOUNT THE STATION INSIDE THE WEATHERPROOF CABINET. CONDUIT HOLES MUST BE DRILLED IN THE WEATHERPROOF CABINET USING THE TEMPLATE PROVIDED. IF CONDUIT ENTERS TOP OF WEATHERPROOF CABINET, USE WEATHERPROOF SEALING MATERIAL AROUND CONDUIT AT CABINET ENTRANCE.
- THE No. 7805-001 STATION SHOWN ON THIS DRAWING IS CERTIFIED BY CSA FOR THE FOLLOWING HAZARDOUS AREA LOCATION:
 - CLASS I; DIV. I; GROUPS C & D
 - CLASS II; DIV. I; GROUPS E, F & G
 - CLASS III; DIV. I
- APPROVAL IS BASED ON INSTALLATION WITHOUT UNAUTHORIZED EQUIPMENT MODIFICATION AND IN ACCORDANCE WITH THIS DRAWING AND PART 1 OF CANADIAN ELECTRICAL CODE (CEC) REQUIREMENTS.
- CHANGES TO THIS DRAWING REQUIRE PRIOR CSA APPROVAL.
- STANDARD HOLE SIZE: 1 1/2" - 11 1/2 NPT
OPTIONAL HOLE SIZE: 2" - 11 1/2 NPT
- USE OF FLEXIBLE ARMORED CABLE AND SEALED CABLE GLAND IS PERMISSIBLE AFTER THE CONDUIT GAS SEAL.



ENGLISH
 * WARNING: SUBSTITUTION OF COMPONENTS MAY IMPAIR INTRINSIC SAFETY
 FRENCH
 * AVERTISSEMENT: LA SUBSTITUTION DE COMPOSANTS PEUT COMPROMETRE LA SECURITE INTRINSEQUE.

* INSTALLATION ACCESSORIES NOT SUPPLIED BY GAI-TRONICS CORP. BUT MUST MEET CANADIAN ELECTRIC CODE (PART I) REQUIREMENTS. SMALLER CONDUIT SIZES MAY BE USED WITH REDUCERS IF WITHIN C.E.C. REQUIREMENTS.