



GAI-TRONICS®
A HUBBELL COMPANY

Model 239WM-001 & 239WM-002 Slim Wall-Mount Stanchions

Confidentiality Notice

This manual is provided solely as an operational, installation, and maintenance guide and contains sensitive business and technical information which is confidential and proprietary to GAI-Tronics. GAI-Tronics retains all intellectual property and other rights in or to the information contained herein, and such information may only be used in connection with the operation of your GAI-Tronics product or system. This manual may not be disclosed in any form, in whole or in part, directly or indirectly, to any third party.

General Information

The Model 239WM-001 Stainless Steel Slim Wall-Mount Stanchion is designed to house GAI-Tronics' Flush-Mount Emergency Analog or VoIP Telephones. The Model 239WM-002 Stanchion is designed to house GAI-Tronics' WiFi Telephones.

The following components are supplied with both models of the Slim Wall-Mount Stanchions:

<u>Qty</u>	<u>Description</u>
1	Stanchion Enclosure
1	Gasketed blank cover
1	Integral Constant-On Strobe with Protective Guard
1	Integral WiFi antenna with connecting cable (Model 239WM-002 only)
2	Access hole gaskets
4	Rubber washers
2	Stainless steel hole plugs

Installation

Safety Guidelines

When installing GAI-Tronics' telephone equipment, please adhere to the following guidelines to ensure the safety of all personnel:

- NEVER install telephone wiring during a lightning storm.
- NEVER install telephone jacks in wet locations unless the jack is specifically designed for wet locations.
- NEVER touch uninsulated telephone wires or terminals unless the telephone line has been disconnected at the network interface.
- USE CAUTION when installing or modifying telephone lines.

Installation Guidelines

- GAI-Tronics' Emergency Telephones are not designed to be installed in parallel or to be "party-lined." Any such installation can cause programming difficulties, premature disconnection of calls, or stations that may not respond when activated. GAI-Tronics highly recommends that one telephone line (PBX extension or CO line) be allocated for each unit.
- GAI-Tronics highly recommends that a telephone line surge suppressor be installed to guard against lightning strikes. Please consult Distributor Sales at 800-838-9313 if further information is required.
- Sealed fittings should be installed at all cable entry points to prevent liquids from entering the unit.
- Secure the front cover using the screws and washers provided. Torque the screws to 10–12 in-lbs. (1.13–1.36 n-m).
- This permanently connected apparatus must have a 15-amp circuit breaker incorporated in the electrical installation of the building.

Mounting

 **NOTE**  **GAI-Tronics flush-mount telephones are equipped with a metal back box that is not required and *should be removed* prior to installing the telephone in the stanchion.**

1. Cables can enter the stanchion either through access holes in the back or the bottom of the unit. Hole caps are provided to seal the holes that are not used. The Model 239WM-00x is provided with two hole caps installed in the bottom of the enclosure. If entry is from the back of the unit, install two gaskets (provided) to seal around the holes. If conduit entrance is desired into the bottom of the unit, remove the hole caps from the bottom two holes and install them in the two holes located on the back of the enclosure.
2. Mount the enclosure on a flat wall surface using the four 5/16-inch (0.312) diameter holes as shown in Figure 1. Four rubber washers are provided to ensure weather-tight sealing.
NOTE: Mounting hardware is not provided.

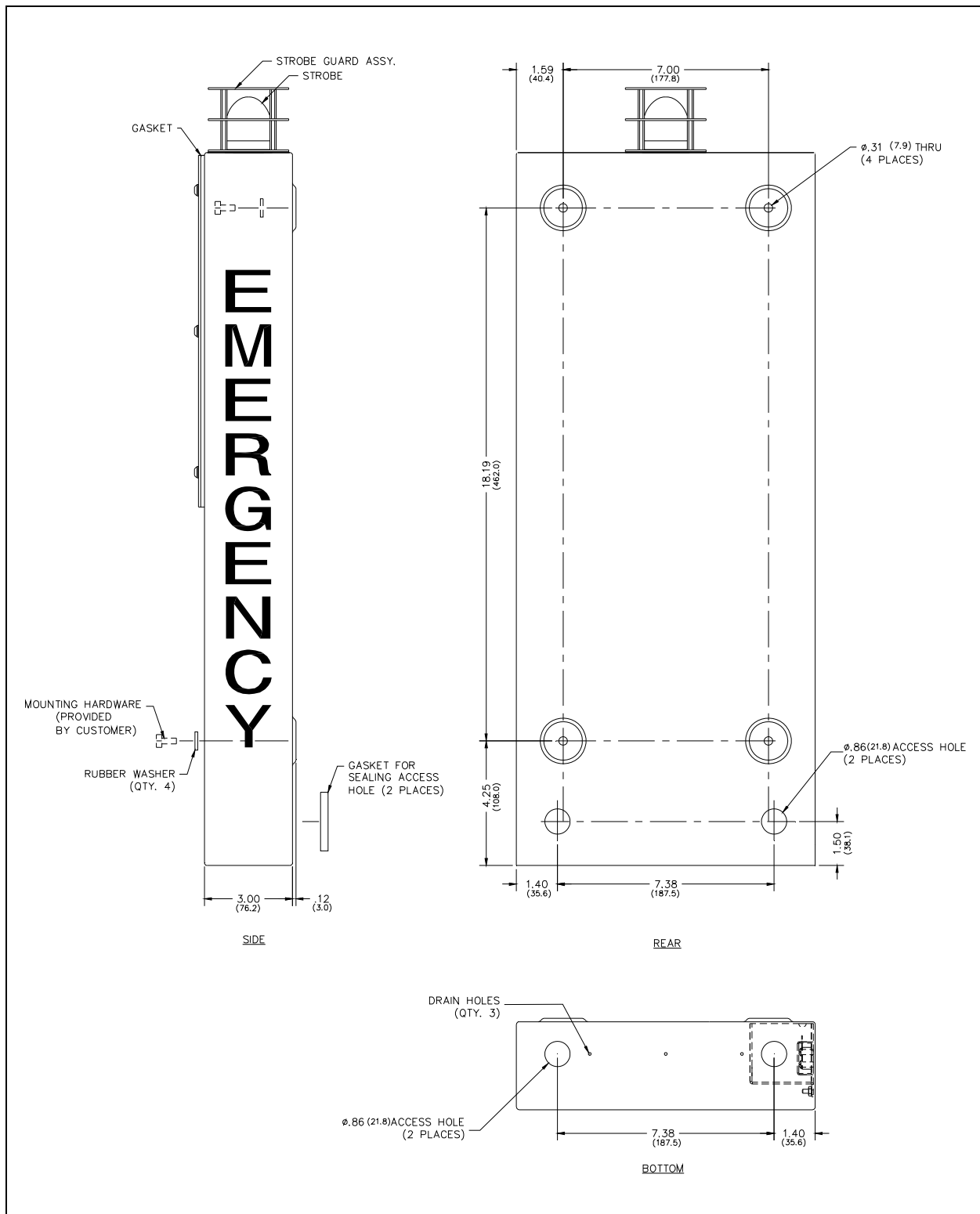


Figure 1. Model 239MW-001/-002 Mounting Details

Model 239WM-001 Stanchion

Analog Telephone Wiring

Refer to Figure 2 and Figure 3.

1. Install the telephone line surge suppressor (customer-supplied) on the telephone line, if applicable.
2. Install the surface-mount jack with adhesive pad that is provided with each Flush-Mount Emergency Telephone by adhering it to the back box at the lower edge.
3. The telephone line must enter the stanchion through one of the holes on the right hand side of the unit when viewed from the front. Plug the telephone line into the surface-mounted jack assembled in step 2.
4. The ac power line must enter the stanchion through one of the holes on the left side of the unit when viewed from the front. Secure the wires to the terminal block as noted on the label.
5. Connect the violet (V) and orange (O) beacon wires inside the stanchion to TB2 on the E-phone PCBA as shown in Figure 2.
6. Plug the RJ11 modular connector from the telephone into the surface-mount jack installed in step 2.

NOTE: Steps 2 and 6 may be skipped and the incoming telephone line can connect directly to TB1 of the telephone, if desired.

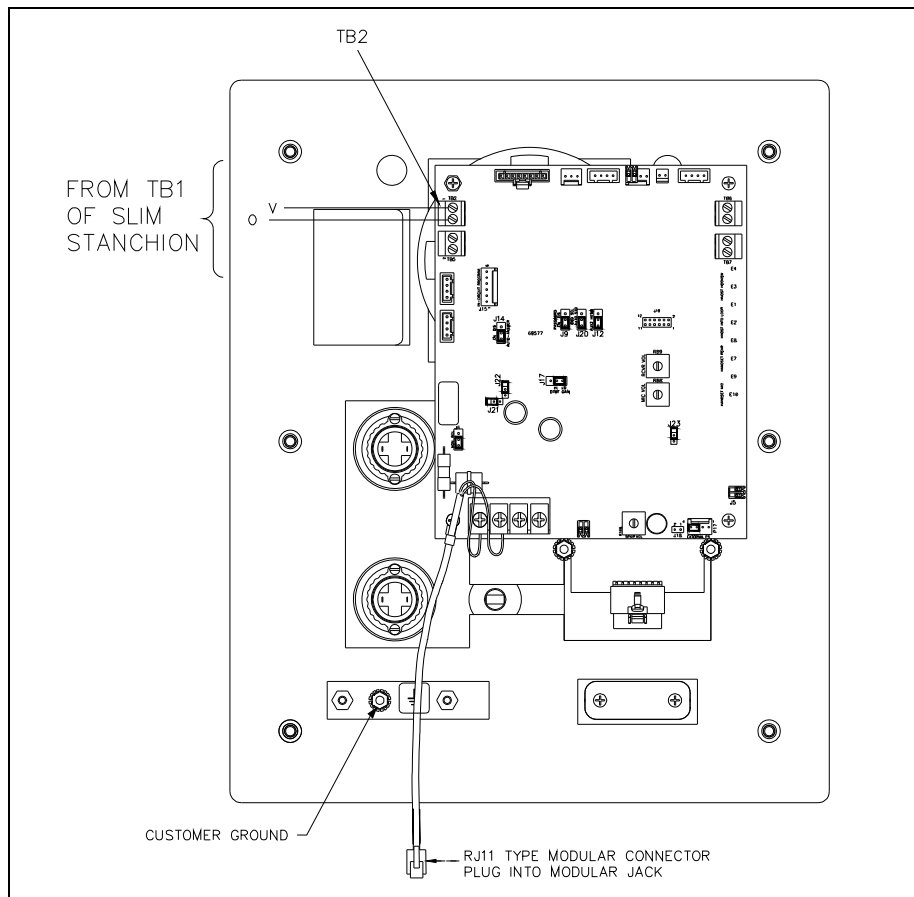


Figure 2.

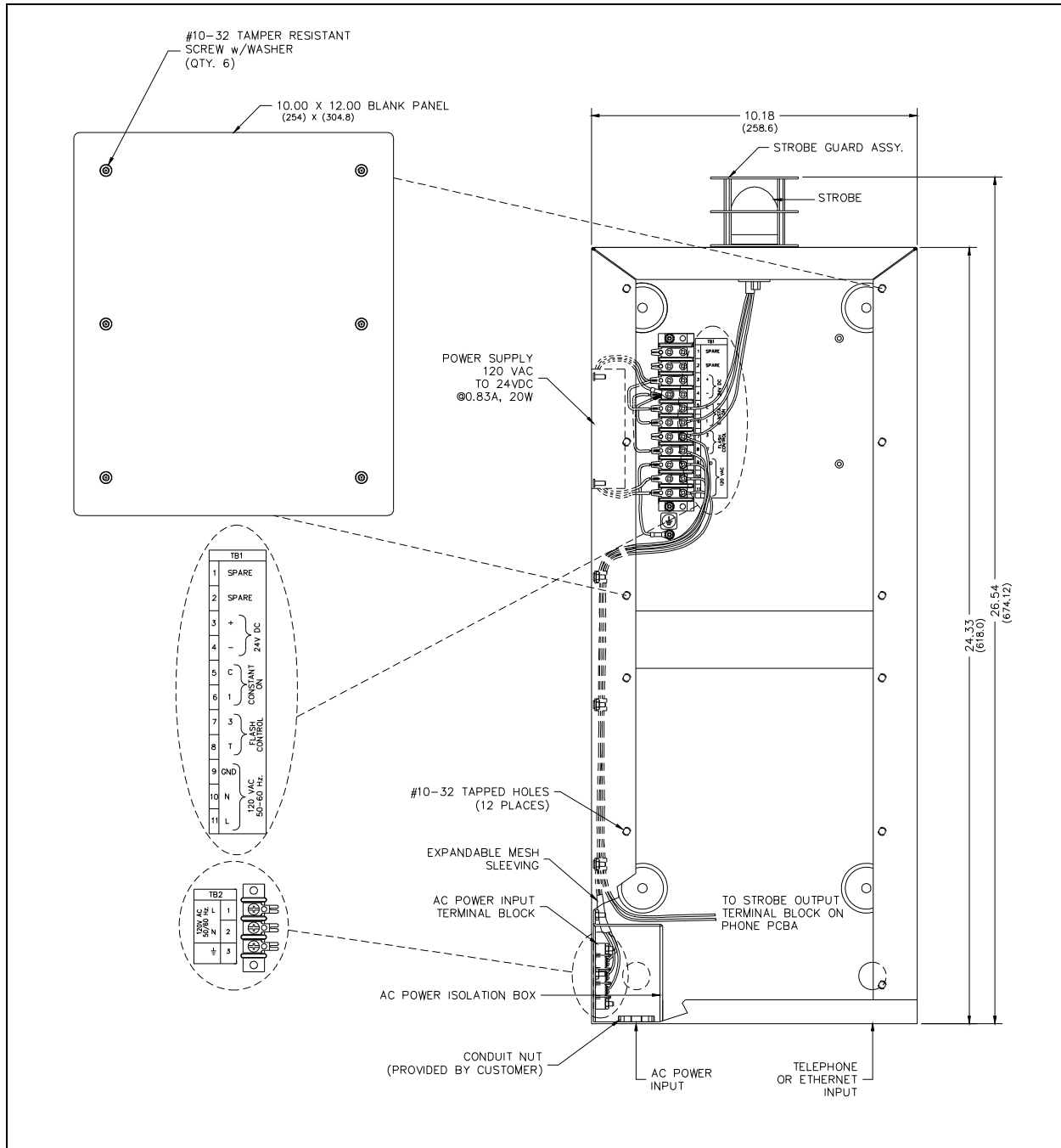


Figure 3.

VoIP Telephone Wiring

Refer to Figure 3 and Figure 4.

1. The Ethernet cable must enter the stanchion through one of the holes on the right hand side of the unit when viewed from the front.
2. The ac power line must enter the stanchion through one of the holes on the left side of the unit when viewed from the front. Secure the wires to the terminal block as noted on the label. See Figure 3.
3. Install the violet (V) and orange (O) beacon wires from inside the stanchion to P10 on the VoIP Carrier PCBA as shown in Figure 4.
4. If utilizing PoE, connect the power to the system as indicated in the PoE manual. If utilizing local power, connect the positive conductor to the (+) terminal and the negative conductor to the (-) terminal of P5 on the telephone (customer-supplied wiring). Connect the positive conductor to the (+) terminal (3) and the negative conductor to the (-) terminal (4) of the TB1 located in the top section of the stanchion. See Figure 5 and Figure 6 for 24 V dc wiring as well as the appropriate telephone installation manuals.
5. Plug the Ethernet cable into the VoIP Circuit PCBA as shown in Figure 4.

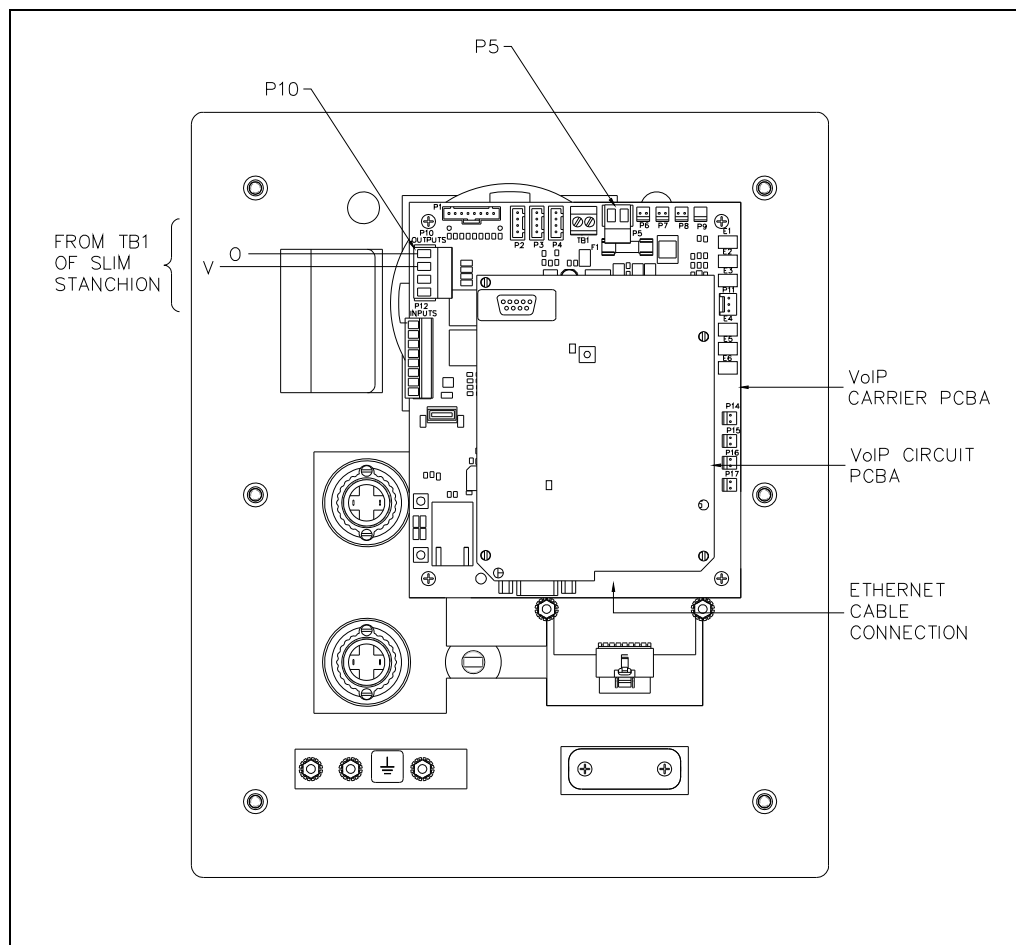


Figure 4.

Model 239WM-002 Stanchion

VoIP/WiFi Telephone Wiring

Refer to Figure 5 and Figure 6.

1. The ac power line must enter the stanchion through one of the holes on the left side of the unit when viewed from the front. Secure the wires to the terminal block as noted on the label.
2. Install the violet (V) and orange (O) beacon wires from inside the stanchion to P10 on the WiFi Carrier PCBA as shown in Figure 5.
3. Attach the connector from the WiFi antenna wire to the antenna connector mounted on the WiFi Carrier PCBA.
4. WiFi telephones require a local power source to operate. Each WiFi Telephone includes terminal block P5 for connection of local power to the telephone. Connect the positive conductor to the (+) terminal and the negative conductor to the (-) terminal of P5 on the telephone (customer-supplied wiring). Connect the positive conductor to the (+) terminal (3) and the negative conductor to the (-) terminal (4) of the TB1 located in the top section of the stanchion. See Figure 5 and Figure 6 for 24 V dc wiring as well as the appropriate telephone installation manuals.

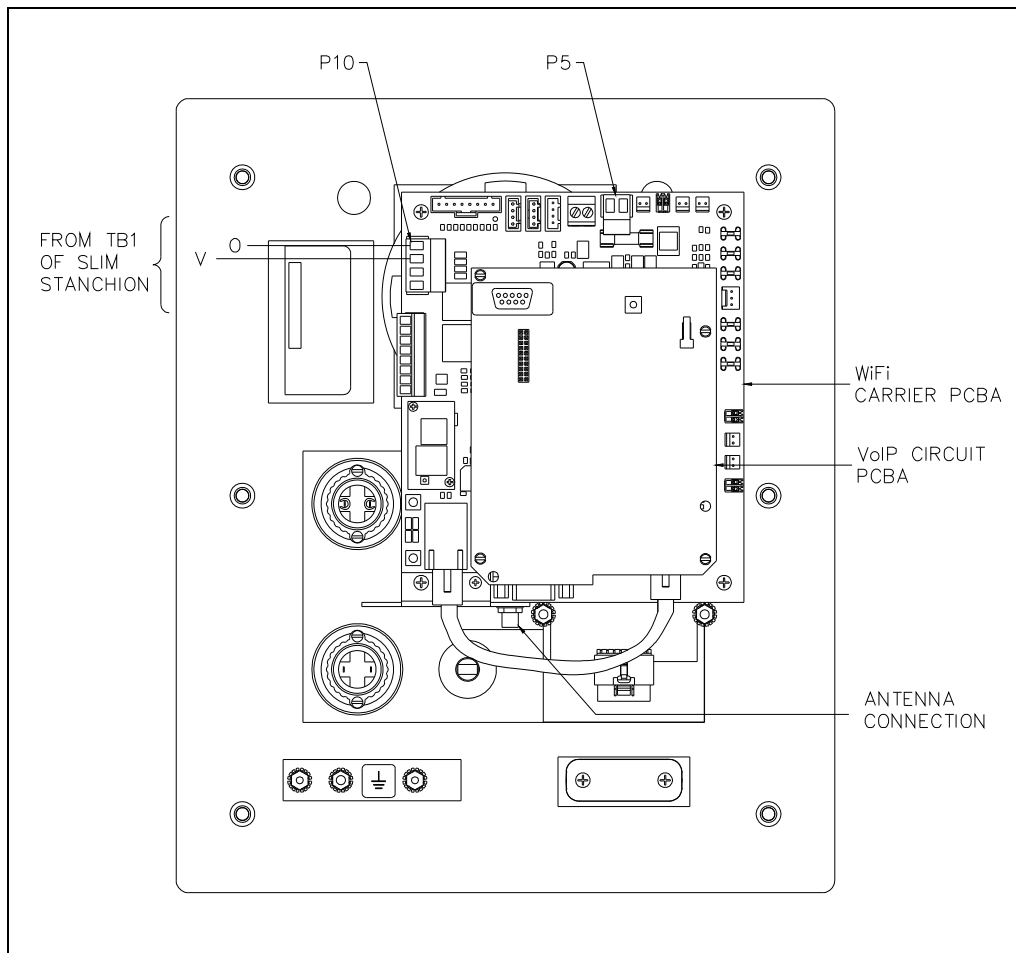


Figure 5.

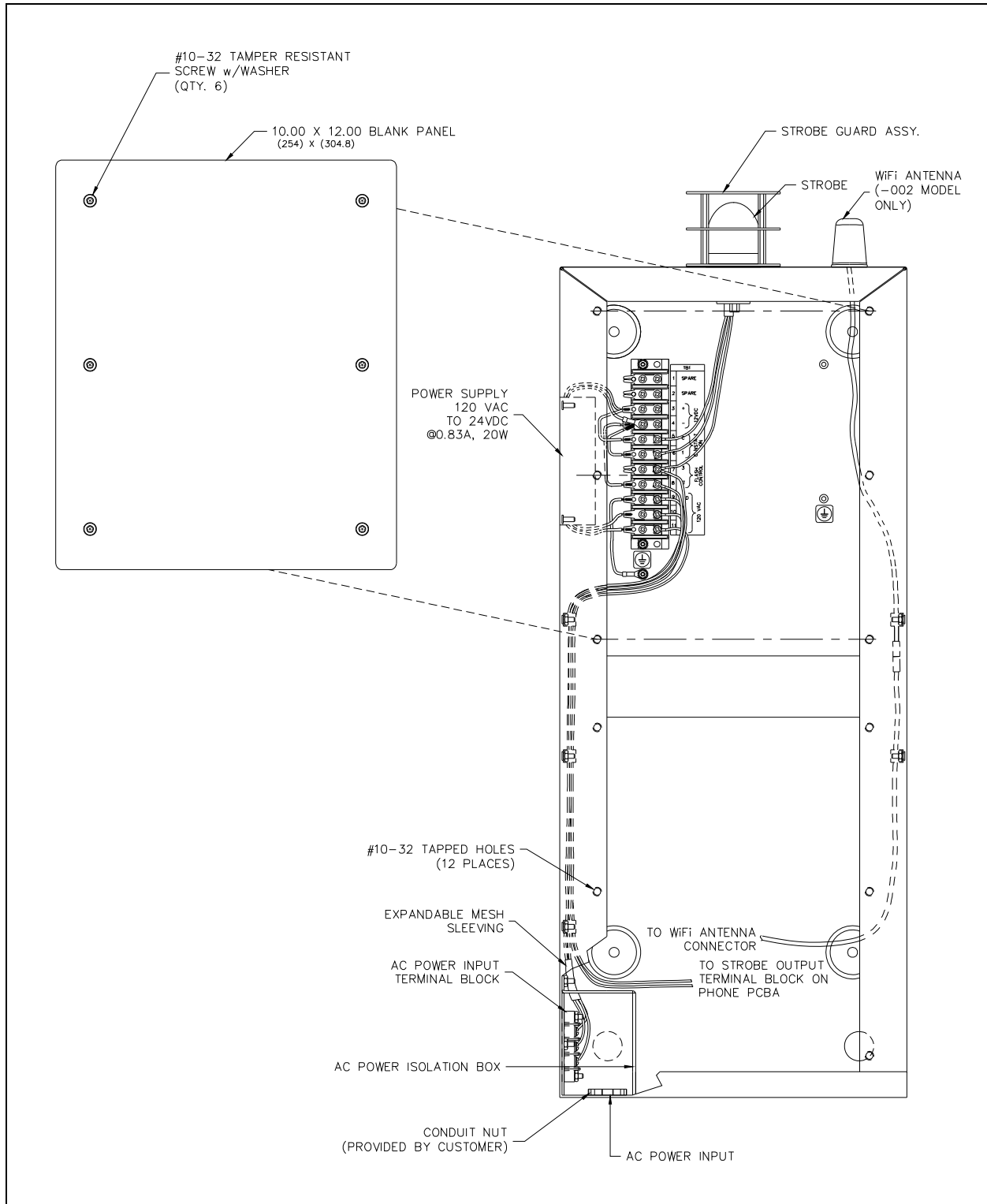


Figure 6.

Specifications

Mechanical

Construction..... Type 304 stainless steel, 0.063-inch thickness
 Finish Brushed and passivated
 Mounting..... Four 5/16-inch (0.312) diameter mounting holes in mounting bosses
 Connections See “Installation” section
 Dimensions 26.54 H × 10.18 W × 3.32 D inches (674.1 × 258.6 × 84.2 mm) maximum
 Shipping weight 13.25 lbs.(6.0 kg) maximum

Electrical

Input voltage 120 V ac
 Power supply rating 24 V dc/ 0.83 A, 20 watts
 Input current..... 0.3 A maximum

Environmental

Temperature range -40° C to +60° C
 Weatherproof rating..... UL50, Type 3R

Approval Standards

Safety of Information Technology Equipment UL/CSA 60950

Warranty

Equipment. GAI-Tronics warrants for a period of one (1) year from the date of shipment, that any GAI-Tronics equipment supplied hereunder shall be free of defects in material and workmanship, shall comply with the then-current product specifications and product literature, and if applicable, shall be fit for the purpose specified in the agreed-upon quotation or proposal document. If (a) Seller's goods prove to be defective in workmanship and/or material under normal and proper usage, or unfit for the purpose specified and agreed upon, and (b) Buyer's claim is made within the warranty period set forth above, Buyer may return such goods to GAI-Tronics' nearest depot repair facility, freight prepaid, at which time they will be repaired or replaced, at Seller's option, without charge to Buyer. Repair or replacement shall be Buyer's sole and exclusive remedy. The warranty period on any repaired or replacement equipment shall be the greater of the ninety (90) day repair warranty or one (1) year from the date the original equipment was shipped. In no event shall GAI-Tronics warranty obligations with respect to equipment exceed 100% of the total cost of the equipment supplied hereunder. Buyer may also be entitled to the manufacturer's warranty on any third-party goods supplied by GAI-Tronics hereunder. The applicability of any such third-party warranty will be determined by GAI-Tronics.

Services. Any services GAI-Tronics provides hereunder, whether directly or through subcontractors, shall be performed in accordance with the standard of care with which such services are normally provided in the industry. If the services fail to meet the applicable industry standard, GAI-Tronics will re-perform such services at no cost to buyer to correct said deficiency to Company's satisfaction provided any and all issues are identified prior to the demobilization of the Contractor's personnel from the work site. Re-performance of services shall be Buyer's sole and exclusive remedy, and in no event shall GAI-Tronics warranty obligations with respect to services exceed 100% of the total cost of the services provided hereunder.

Warranty Periods. Every claim by Buyer alleging a defect in the goods and/or services provided hereunder shall be deemed waived unless such claim is made in writing within the applicable warranty periods as set forth above. Provided, however, that if the defect complained of is latent and not discoverable within the above warranty periods, every claim arising on account of such latent defect shall be deemed waived unless it is made in writing within a reasonable time after such latent defect is or should have been discovered by Buyer.

Limitations / Exclusions. The warranties herein shall not apply to, and GAI-Tronics shall not be responsible for, any damage to the goods or failure of the services supplied hereunder, to the extent caused by Buyer's neglect, failure to follow operational and maintenance procedures provided with the equipment, or the use of technicians not specifically authorized by GAI-Tronics to maintain or service the equipment. **THE WARRANTIES AND REMEDIES CONTAINED HEREIN ARE IN LIEU OF AND EXCLUDE ALL OTHER WARRANTIES AND REMEDIES, WHETHER EXPRESS OR IMPLIED BY OPERATION OF LAW OR OTHERWISE, INCLUDING ANY WARRANTIES OF MERCHANTABILITY OR FITNESS FOR A PARTICULAR PURPOSE.**

Return Policy

If the equipment requires service, contact your Regional Service Center for a return authorization number (RA#). Equipment should be shipped prepaid to GAI-Tronics with a return authorization number and a purchase order number. If the equipment is under warranty, repairs or a replacement will be made in accordance with the warranty policy set forth above. Please include a written explanation of all defects to assist our technicians in their troubleshooting efforts.

Call 800-492-1212 (inside the USA) or 610-777-1374 (outside the USA) for help identifying the Regional Service Center closest to you.