

Fluorescent and LED Fixture Slide Dimmer

Single Pole (One location) or 3-Way (Multi-location)

Cat. No. PSD710-UNV-WVL
 1200VA-120VAC, 60Hz, 1500VA-277VAC, 60Hz
 10A LED, 120VAC/277VAC, 60Hz
 10A Electronic Ballast, 120VAC/277VAC, 60Hz
 28mA Maximum Sink Current

For Use with LED fixtures using 0-10V dimmable power supply/drivers, Advance Transformer Mark 7[®] OSRAM Sylvania Quicktronic[®] Helios[™] or equivalent dimmable ballasts.



DI-421-IP710-02G-X2

INSTALLATION INSTRUCTIONS

WARNING:

- TO AVOID FIRE, SHOCK, OR DEATH; TURN OFF POWER AT CIRCUIT BREAKER OR FUSE AND TEST THAT POWER IS OFF BEFORE WIRING OR SERVICING FIXTURE!

CAUTIONS:

- To avoid overheating and possible damage to this device and other equipment, use only with the appropriate LED 0-10V dimmable power supplies/drivers, Advance Transformer 120/277V Mark 7[®] 0-10V ballasts or OSRAM Sylvania Quicktronic[®] Helios[™] electronic ballasts.

CAUTIONS:

- To be installed and/or used in accordance with appropriate electrical codes and regulations.
- If you are unsure about any part of these instructions, consult an electrician.
- Lighting fixture and dimmer must be grounded.
- Use this device with copper or copper clad wire only.

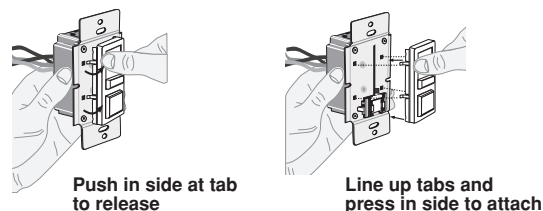
NOTE: Use only one (1) dimmer in a 3- or 4-way circuit. The switch(es) will turn the light on at the brightness level selected at the dimmer.

Tools needed to install your Dimmer

Slotted/Philips Screwdriver Electrical Tape
 Pencil Cutters Pliers
 Ruler

Changing the color of your Dimmer

Your Dimmer includes three color options. The Dimmer ships with the White frame attached. To change color of frame, proceed as follows:



Note: Move slider on dimmer and slider on change kit to bottom of the slide bar prior to engaging.

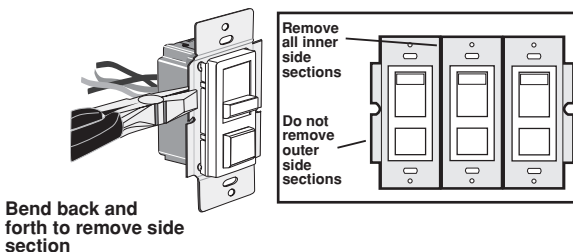
Installing Dimmer by itself or with other devices

If installing Dimmer in a single device application, proceed with the **INSTALLING YOUR DIMMER** section. If installing Dimmer in a multi-device application, proceed as follows:

MULTI-DEVICE APPLICATION:

NOTE: You only need to remove side sections if installing with other dimmers or if it does not fit in wall box – not when installing with mechanical switches.

When installing more than one dimmer in the same location, the side sections of the mounting strap must be removed. Use pliers to carefully bend side sections back and forth until they break off.



Note: No derating is required in this multi-device installation as referenced in the following chart.

MAXIMUM LOAD PER DIMMER FOR MULTI-DEVICE				
Cat. No.	Volts	Single	Two Gang	More than 2 Devices
PSD710-UNV-WVL	120	1200VA	1200VA	1200VA
PSD710-UNV-WVL	277	1500VA	1500VA	1500VA

MAXIMUM BULB WATTAGE:

0-10VDC ballasts are rated in Volt-Amps (VA). The maximum number of ballast per dimmer is based on the load VA rating. The maximum bulb wattage is determined by the efficiency of the ballast.

NOTE: For additional switching capacity, use dimmers in conjunction with a Leviton OPP20 120/277V Power Pack.

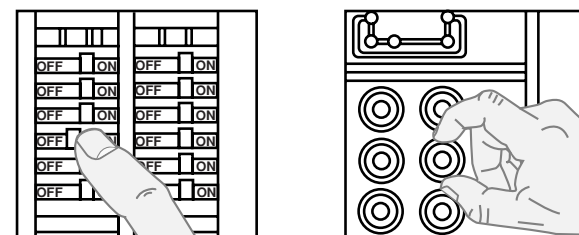
For applications using Leviton's OPP20 Power Pack (Shown in Wiring Diagrams 2), the OPP20 switch ratings are as follows (refer to OPP20 Instruction Sheet for additional information):

OPP20 SWITCH RATINGS:
 20 Amps for 120 and 277 VAC Ballast

0-10 VDC Sink Current Rating:
 28 mA maximum sink current. Contact your ballast manufacturer for the sink current rating of the ballast.

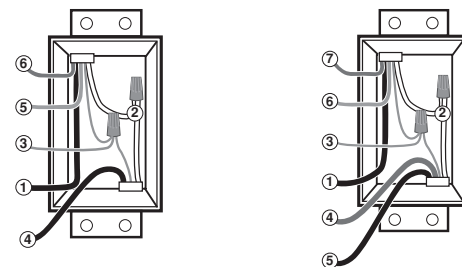
INSTALLING YOUR DIMMER

Step 1 WARNING: TO AVOID FIRE, SHOCK, OR DEATH; TURN OFF POWER at circuit breaker or fuse and test that power is off before wiring!



Step 2 Identifying your wiring application (most common):

NOTE: If the wiring in the wall box does not resemble any of these configurations, consult an electrician.



Single Pole

1. Load
2. Neutral
3. Ground
4. Line (Hot)
6. Violet (+)

3-Way

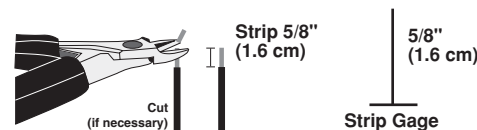
1. Load (See note below)
2. Neutral
3. Ground
4. First Traveler – note color
5. Second Traveler – note color
6. Gray (-)
7. Violet (+)

IMPORTANT: For 3-way applications, note that one of the screw terminals from the old switch being removed will usually be a different color (Black) or labeled Common. Tag that wire with electrical tape and identify as the common (Line or Load) in both the dimmer wall box and the standard 3-way switch wall box. The remaining two wires on the brass or lighter screws screw terminals of the old switch are the travelers.

Step 3 Preparing wires:

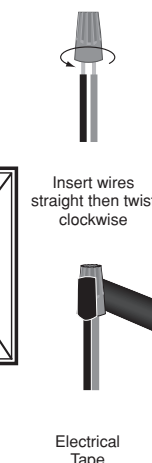
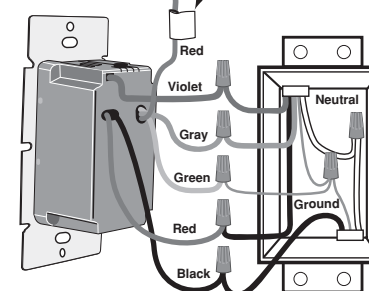
NOTE: Ensure that low-voltage wiring (for Gray and Violet connection of dimmer) is installed at wallbox that will house the PSD710-UNV-WVL Dimmer.

- Pull off pre-cut insulation from Dimmer leads.
- Make sure that the ends of the wires from the wall box are **straight (cut if necessary)**.
- Remove 5/8" (1.6 cm) of insulation from each wire in the wall box (shown).
- **For Single-Pole Application, go to Step 4A.**
- **For 3-Way Application, go to Step 4B.**



Step 4A Single-Pole Wiring Application:

This wire is used in 3-way installations only. For single pole installations, do not remove this insulating label.



Connect wires per WIRING DIAGRAM 1 (shown on page 2) as follows:

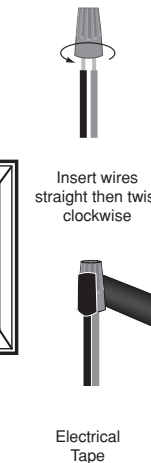
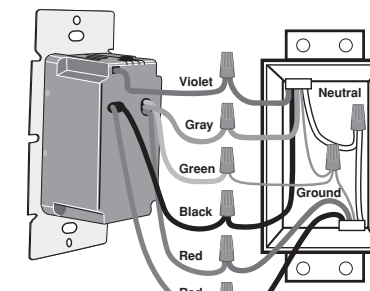
Screw wire nuts on clockwise making sure no bare conductors show below the wire connectors. Secure each connector with electrical tape.

NOTE: Ensure that low-voltage wiring (for Gray and Violet connection of dimmer) is installed at wallbox that will house the PSD710-UNV-WVL Dimmer.

NOTE: For additional switching capacity, use dimmers in conjunction with a Power Pack.

- Green dimmer Ground lead to Green or bare copper wire in wall box.
- Black dimmer lead to Line Hot wall box wire.
- Red dimmer lead without insulating label to Load wall box wire.
- Remaining Red dimmer lead should have Red insulation label affixed.
- **NOTE:** If insulating label is not affixed to Red lead, use a small wire nut or electrical tape to cap off.
- Violet dimmer lead to (+) Violet connection on ballast.
- Gray dimmer lead to (-) Gray connection on ballast.
- **Proceed to Step 5.**

Step 4B 3-Way Wiring Application:



Connect wires per WIRING DIAGRAM 3 (shown on page 2) as follows:

Screw wire nuts on clockwise making sure no bare conductors show below the wire connectors. Secure each connector with electrical tape.

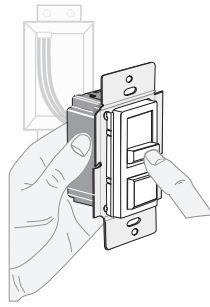
NOTE: Dimmer can be installed on either the Load or Line side.

NOTE: Ensure that low-voltage wiring (for Gray and Violet connection of dimmer) is installed at wallbox that will house the PSD710-UNV-WVL Dimmer.

NOTE: For additional switching capacity, use dimmers in conjunction with a Power Pack.

- Green dimmer Ground lead to Green or bare copper wire in wall box.
- Black dimmer lead to tagged (common) wall box wire identified in step 2.
- Remove Red insulating label from Red lead.
- First Traveler wall box wire identified in step 2 to any red dimmer lead.
- Second Traveler wall box wire identified in step 2 to the remaining red dimmer lead.
- Violet dimmer lead to (+) Violet connection on ballast.
- Gray dimmer lead to (-) Gray connection on ballast.
- **Proceed to Step 5.**

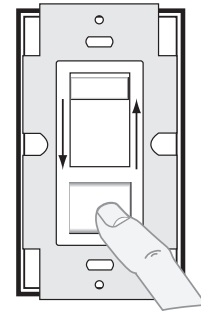
Step 5 Testing your Dimmer prior to mounting in wall box:



- Restore power at circuit breaker or fuse.
- Carefully holding Dimmer as shown, move slider control lever to highest position. Lights should turn ON to brightest level. If lights do not turn ON, depress push-button switch once. Lights should turn ON to brightest level. **If lights still do not turn ON, refer to the TROUBLESHOOTING section.**

OPERATION

NOTE: If using the dimmer in a 3-way application, the lights will turn ON at brightness set on dimmer's slide control lever. The lights can be controlled from either the dimmer or the switch location.

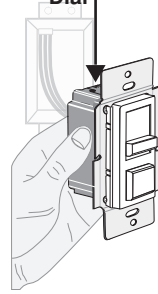


ON/OFF:
Depress push-button switch to ON position - Lights will turn ON.

Depress push-button switch to OFF position - Lights will turn OFF.

BRIGHTEN & DIM:
Move slider control lever - Lights will BRIGHTEN or DIM.

Trim Adjustment Dial



Setting the Maximum Light Level

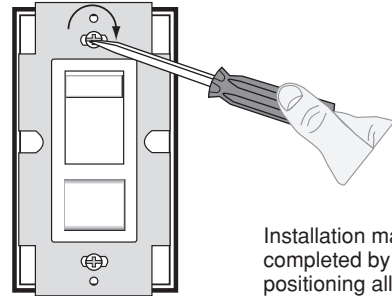
This dimmer features a Maximum Trim adjustment to adjust the maximum light level of the dimmer.

1. Locate the "Trim Adjustment" dial on the top of the dimmer.
2. Rotate the dial clockwise to reduce the maximum light level, or counter-clockwise to increase the maximum light level.

TROUBLESHOOTING

- Lights Flickering
 - Lamp has a bad connection.
 - Wires not secured firmly with wire connectors.
- Light does not turn ON
 - Circuit breaker or fuse has tripped.
 - Lamp is burned out.
 - Lamp Neutral connection is not wired.

Step 6 Dimmer Mounting: TURN OFF POWER AT CIRCUIT BREAKER OR FUSE.



Installation may now be completed by carefully positioning all wires to provide room in wall box for dimmer. Mount dimmer into box with mounting screws supplied. Attach wallplate.

Step 7 Restore Power: Restore power at circuit breaker or fuse. Installation is complete.

For non-standard wiring applications, refer to Wire Nut and Connector Size Chart

WIRE CONNECTOR / # OF COND. COMBINATION CHART
1- #12 w/ 1 to 3 #14, #16 or #18
2- #12 w/ 1 or 2 #16 or #18
1- #14 w/ 1 to 4 #16 or #18
2- #14 w/ 1 to 3 #16 or #18

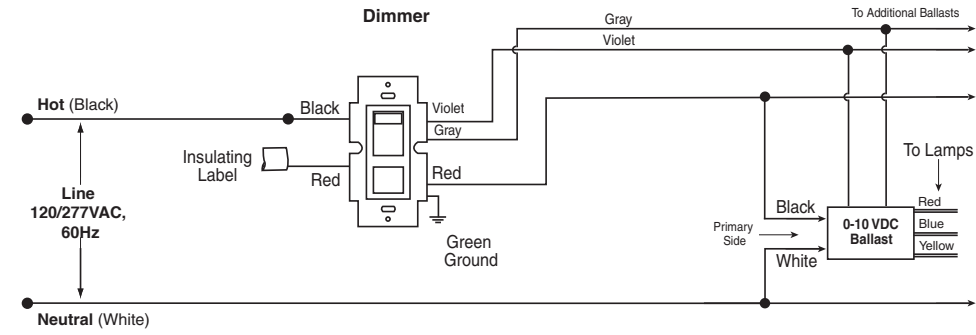
For additional information, contact Hubbell Techline at 1-800-888-8006 or visit Hubbell website at www.hubbell.com

LIMITED 5 YEAR WARRANTY AND EXCLUSIONS
For Hubbell Control Solutions warranty and exclusions information: www.hubbell.com/hubbellighting/en/warranty

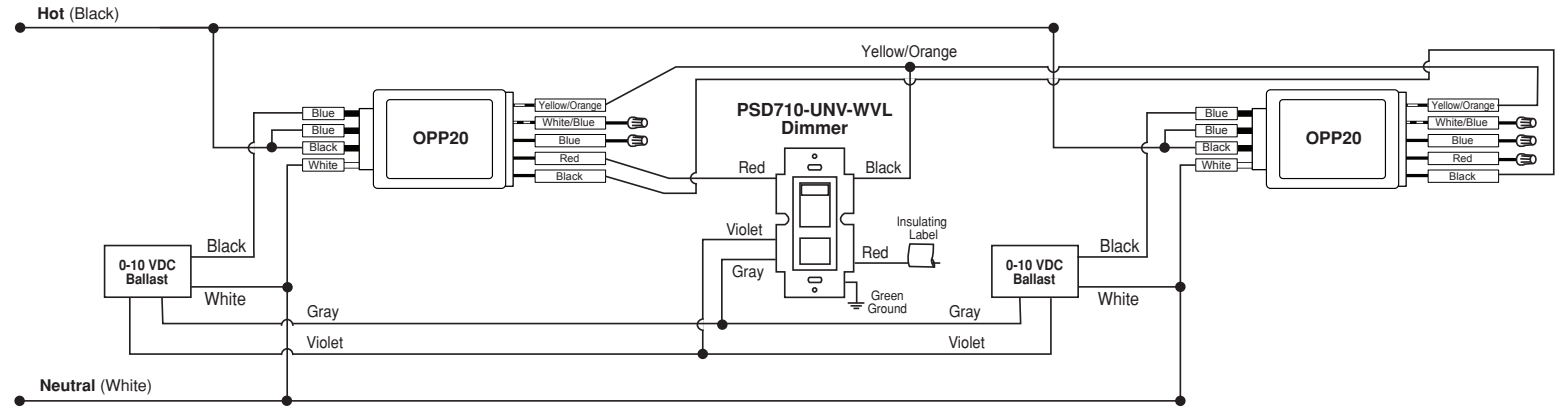
© 2019 Leviton Manufacturing Co., Inc.
All Rights Including Trade Dress Rights Reserved

Third party trademarks are the property of their respective owners

Wiring Diagram 1 : Single Location Control



Wiring Diagram 2 : Single Location Control with OPP20 Power Pack



Wiring Diagram 3: Two Location Control

