

FLUORESCENT SLIDE DIMMER

Single Pole or 3-Way

Cat. No. RSD710-UNV-WVL, 1200VA-120VAC, 60Hz, 1500VA-277VAC, 60Hz
For Use with fixtures using 0-10V dimmable power supply/drivers, Advance Transformer Mark 7®
OSRAM Sylvania QUICKTRONIC® Helios™ or equivalent dimmable ballasts

INSTALLATION INSTRUCTIONS



HUBBELL
Control Solutions

DI-401-DS710-02A-X0

WARNINGS AND CAUTIONS:

- **TO AVOID FIRE, SHOCK, OR DEATH: TURN OFF POWER** at circuit breaker or fuse and test that power is off before wiring or servicing fixture!
- **TO AVOID FIRE, SHOCK, OR DEATH:** use only with the appropriate LED 0-10V dimmable power supplies/drivers, Advance Transformer 120/277V Mark 7® 0-10V ballasts or OSRAM Sylvania QUICKTRONIC® Helios™ electronic ballasts.
- To be installed and/or used in accordance with appropriate electrical codes and regulations.
- If you are unsure about any part of these instructions, consult an electrician.
- Use this device with **copper or copper clad wire only**.

WARNINGS AND CAUTIONS:

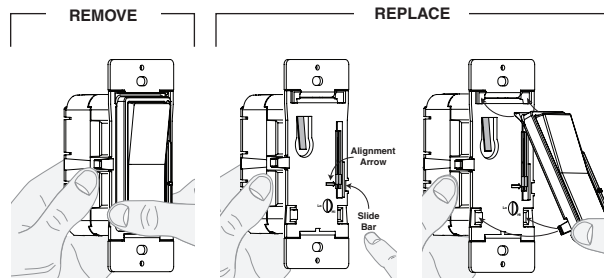
- When retrofitting dimming ballasts into fixtures that originally had Instant Start ballasts, the sockets **MUST** be replaced with Rapid Start sockets to allow proper dimmer operation and prevent damage to the dimming ballast. Refer to the instructions provided with the ballast.
- Use only one (1) dimmer in a 3 or 4-way circuit. The switch(es) will turn the light on at the brightness level selected at the dimmer.
- To avoid overheating and possible damage to this device and other equipment, **DO NOT** install to control a receptacle, a motor or a transformer-operated appliance, or any other lighting sources than those specified.

Tools needed to install your Dimmer

Slotted/Philips Screwdriver Electrical Tape Ruler
Pliers Pencil Cutters

Changing the color of your Dimmer

If a color change kit is provided with your device, proceed with the following step before wiring the device if you need to change the color. Otherwise, proceed with the "Installing Dimmer by itself or with other devices" section.



Press the side of the color kit at either bottom tab and pull forward to release.

Align slide bar with alignment arrow as shown. Move the slide bar of the color kit to the bottom.

Insert top tabs of the color kit into the slots on the top of the dimmer. Then press the bottom of the color kit in until it snaps into place.

Installing Dimmer by itself or with other devices

No derating is required in multi-device applications.

MAXIMUM BULB WATTAGE:

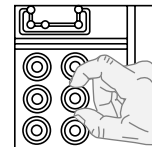
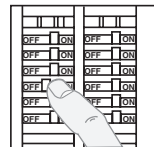
0-10VDC ballasts are rated in Volt-Amps (VA). The maximum number of ballast per dimmer is based on the load VA rating. The maximum bulb wattage is determined by the efficiency of the ballast. Ballast efficiencies will vary from different manufacturers; consider 80% efficient as average. Use the chart to determine maximum bulb wattage for typical ballast efficiency ratings. Use with Leviton's OPP20 Power Pack to increase the switch rating to 20 Amps for 120 and 277 VAC Ballast.

MAXIMUM BULB WATTAGE AT 80% EFFICIENCY				
Volts	Rating	Single	Two Devices	More than 2 Devices
120V	1200VA	960W	960W	960W
277V	1500VA	1200W	1200W	1200W

Installing your Dimmer

NOTE: Use check boxes when Steps are completed.

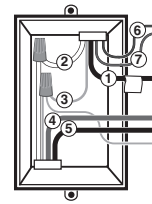
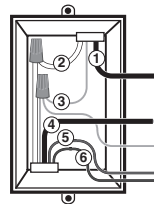
Step 1 **WARNING: TO AVOID FIRE, SHOCK, OR DEATH; TURN OFF POWER** at circuit breaker or fuse and test that power is off before wiring or servicing fixture!



Step 2 **Identifying your wiring application (most common):**



NOTE: If the wiring in the wall box does not resemble any of these configurations, consult an electrician.



Single Pole

1. Line (Hot)
2. Neutral
3. Ground
4. Load
5. Gray (-)
6. Violet (+)

3-Way

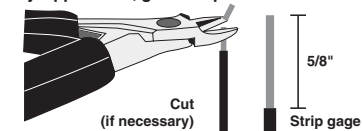
1. Line or Load (See note below)
2. Neutral
3. Ground
4. First Traveler – note color
5. Second Traveler – note color
6. Gray (-)
7. Violet (+)

NOTE: For 3-Way applications, note that one of the screw terminals from the old switch being removed will usually be a different color (Black) or labeled Common. Tag that wire with electrical tape and identify as the common (Line or Load) in both the dimmer wall box and 3-way wall box.

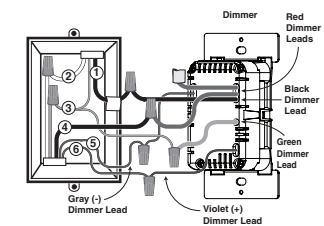
Step 3 Preparing and connecting wires:



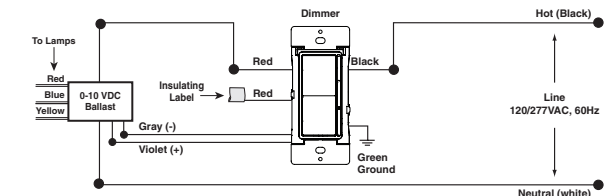
- Make sure that the ends of the wires from the wall box are straight (**cut if necessary**).
- Remove 5/8" (1.6 cm) of insulation from each wire in the wall box.
- For Single-Pole Application, go to Step 4a.
- For 3-Way Application, go to Step 4b.



Step 4a Single-Pole Wiring Application:



Wiring Diagram 1

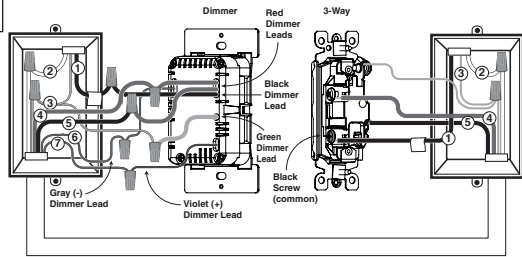


Connect wires per WIRING DIAGRAM as follows:

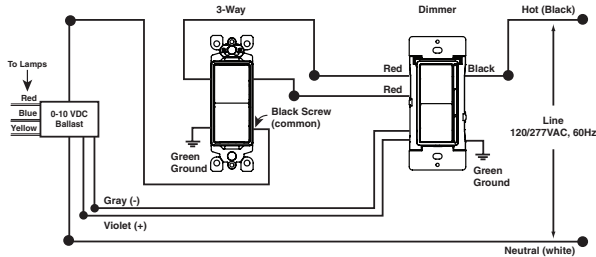
- Green or bare copper wall box wire to **GREEN** dimmer lead.
- Line Hot wall box wire to **BLACK** dimmer lead.
- Load wall box wire to **RED** dimmer lead.
- Remaining **RED** Dimmer lead should have a label affixed. **DO NOT REMOVE** this label in a single pole application. **NOTE:** If the insulating label is not affixed to the second **RED** lead use electrical tape or a wire connector to cover.
- Violet dimmer lead to (+) Violet connection on ballast.
- Gray dimmer lead to (-) Gray connection on ballast.

Proceed to Step 5.

Step 4b 3-Way Wiring Application:



Wiring Diagram 2

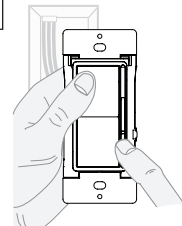


Connect wires per WIRING DIAGRAM as follows:

- Green or bare copper wall box wire to **GREEN** dimmer lead.
- Common (Line hot or Load) wire to **BLACK** dimmer lead.
- Remove insulating label and connect the first traveler wire to the **RED** dimmer lead.
- Connect the second traveler wire to the remaining **RED** dimmer lead.
- **VIOLET** dimmer lead to (+) Violet connection on ballast.
- **GRAY** dimmer lead to (-) Gray connection on ballast.

Proceed to Step 5.

Step 5 Testing your Dimmer prior to mounting in the wall box:

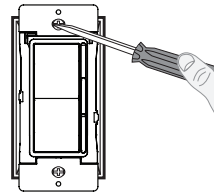


- Restore power at circuit breaker or fuse.
- Carefully holding dimmer, move slider control lever to highest position and press the top of the rocker. Lights should turn ON to brightest level.

If lights does not turn ON, refer to the TROUBLESHOOTING section.

Step 6 Dimmer Mounting:

TURN OFF POWER AT CIRCUIT BREAKER OR FUSE.



Installation may now be completed by carefully positioning all wires to provide room in wall box for dimmer. Mount dimmer into box with mounting screws supplied.

Attach wallplate.

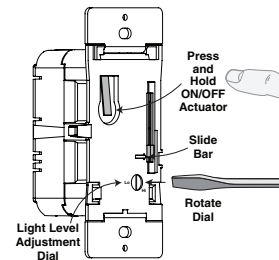
Step 7 Restore Power:

Restore power at circuit breaker or fuse. Installation is complete.

Programming

Setting Minimum Light Level

1. Press bottom of rocker to turn the dimmer OFF and move the slide bar to the bottom.
2. Remove color kit (see Changing the color of your Dimmer section on page 1).
3. Press and hold the on/off actuator.
4. Rotate the light adjustment dial clockwise to increase the minimum light level or counter-clockwise to decrease the minimum light level.
5. Release the on/off actuator.
6. Replace color kit (see Changing the color of your Dimmer section on page 1).



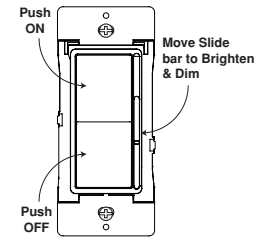
Operation

ON/OFF:

- Press top of rocker - Lights will turn ON.
- Press bottom of rocker - Lights will turn OFF.

BRIGHTEN & DIM:

- Move slide bar - Lights will BRIGHTEN or DIM.



Troubleshooting

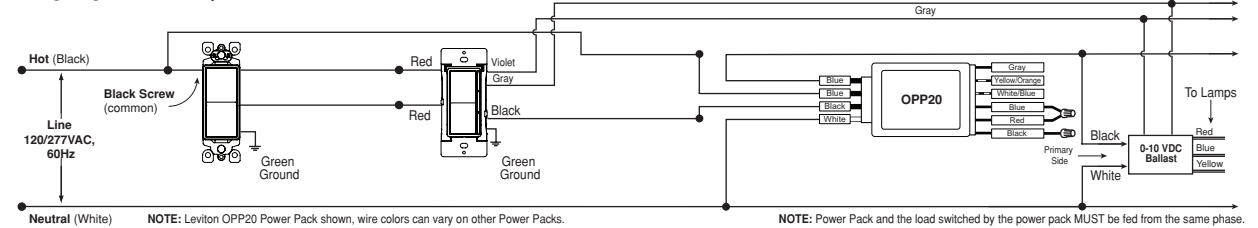
- **Lights flickering**
 - Lamp has bad connection.
 - Wires not secured firmly with wire connectors.
- **Light does not turn ON**
 - Circuit breaker or fuse has tripped.
 - Lamp or ballast has burned out.
 - Lamp sockets are not Rapid Start type.
 - Lamp Neutral connection is not wired.

Mark 7 is a registered trademark of Advance Transformer Company. OSRAM and QUICKTRONIC are registered trademarks of OSRAM GmbH. HELIOS is a trademark of OSRAM SYLVANIA Inc.

LIMITED 5 YEAR WARRANTY AND EXCLUSIONS
For Hubbell Control Solutions warranty and exclusions information:
www.hubbell.com/hubbellighting/en/warranty

For additional information, contact Hubbell Techline at
1-800-888-8006 or visit Hubbell website at www.hubbell.com

Wiring Diagram 3 3-Way Switch



Wiring Diagram 4 Dimmer

