

Assembly Instructions for: HTB Terminal

Terminal cap tightening torque: 1 to 2 Nm
Operating temperature range -60°C +100°C

Certification Details

Product Type: HTB Terminal
Baseefa08ATEX0266U Ⓢ II 2G Exeb IIC Gb
IECEX BAS08.0085U
BAS21UKEX0038U

Terminal resistance
for each pillar is 0.0003 ohms.

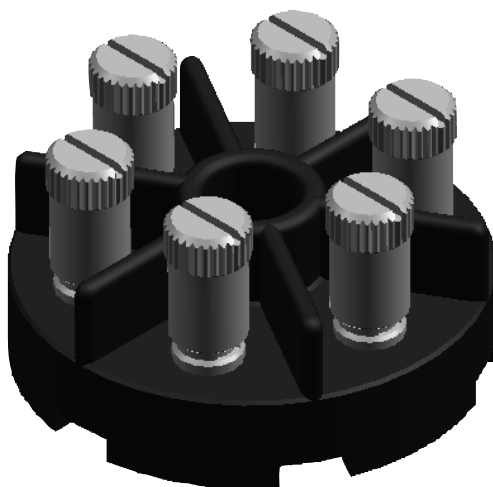


Table 1

Max. No. conductors of same size connected to each terminal

Conductor Size (sq. mm.)	Maximum No. of Cores
10	2
6	3
4	4
Smaller Conductors > or = 0.5 sq. mm.	4

Conductors be either all solid or all stranded

Table 2

Conductor Size (mm ²)	0.50	0.75	1	1.5	2.5	4	6	10
Current (Amps)	1	1	8	10	15	21	26	37

Table 3

Alternatively, the following PAIRS of conductor combinations may be fitted in one terminal

1.5mm ² solid with:	Stranded: 2.5mm ² or 4mm ² or 6mm ² or 10mm ² Solid: 1.5mm ²
1.5mm ² stranded with:	Stranded only: 1.5mm ² or 2.5mm ² or 4mm ² or 6mm ² or 10mm ²
2.5mm ² solid with:	Stranded: 6mm ² or 10mm ² Solid: 2.5mm ² or 4mm ²
2.5mm ² stranded with:	Stranded only: 2.5mm ² or 4mm ² or 6mm ² or 10mm ²
4mm ² stranded with:	Stranded only: 4mm ² or 6mm ² or 10mm ²
6mm ² stranded with:	Stranded only: 6mm ² or 10mm ²
10mm ² stranded with:	Stranded only: 10mm ²

Alternatively, the following THREE of conductor combinations may be fitted in one terminal: Two 2.5mm² solid conductors and one 6mm² stranded conductor

- 1) Leads connected to the terminals shall have insulation extending to within 3mm of the terminal throat and the bare end of each lead shall not extend more than 3mm beyond the other side of the slot and shall remain straight. Maximum stripping length 16mm.
- 2) The terminal cap of each terminal, used and unused, shall be fully tightened down by the end user. The tightening torque is 1 to 2Nm.
- 3) Conductors of different sizes and configurations shall not be inserted into the same terminal throat/slot except for the specific combinations listed in Tables 1 & 3. Even distribution of conductors required to ensure all conductors are under compression.
- 4) When installed in an enclosure the creepage and clearance distances between the terminals, adjacent equipment and enclosure walls must comply with the requirements of IEC/EN 60079-7.
- 5) When installed in plastic enclosures, there shall be at least 3mm clearance between the inside of the removable cover/lid of the enclosure and the terminal screws after the connections have been made and the terminal screws and cover/lid have been fully tightened down.
- 6) For conductor sizes less than 1mm² but not less than 0.5mm², the maximum current rating shall not exceed 1 amp.
- 7) The service temperature range must not exceed -60°C to +100°C.

UK and EU Attestation of Conformity in accordance with European Directive 2014/34/EU and UK Statutory Instrument 2016/1107

Manufacturer: Hawke International, Oxford Street West, Ashton-under-Lyne, OL7 0NA, United Kingdom

Component: 470 Flange Adaptors (Group I)

Provisions of the Directive fulfilled by the Equipment: Group II Category 2GD Ex eb IIC Gb

Harmonized Standards used: EN 60079-0:2018, EN60079-7:2015+A1:2018

Notified Body for EU-Type Examination: SGS Fimko 0598 Helsinki Finland

EU-type Examination Certificate: Baseefa08ATEX0266U

Notified Body for production: 0598

Approved Body for UK-Type Examination: SGS Baseefa 1180 Buxton UK

UK-type Examination Certificate: BAS21UKEX0038U

Approved Body for production: 1180

On behalf of the above named company, I declare that on the date the equipment, accompanied by this declaration, is placed on the market the equipment conforms with all technical and regulatory requirements of the above listed directives.

Andrew Reid
Technical Manager