



Note: Always reference your guiding standard or consult your local code for compliance when installing grounding and bonding devices

IF THIS CONNECTOR OR CABLE IS
LOOSE OR MUST BE REMOVED,
PLEASE CALL THE BUILDING
TELECOMMUNICATIONS MANAGER

All HPW grounding and bonding jumpers contain this warning label on both ends to protect the grounding and bonding network.
Do not remove

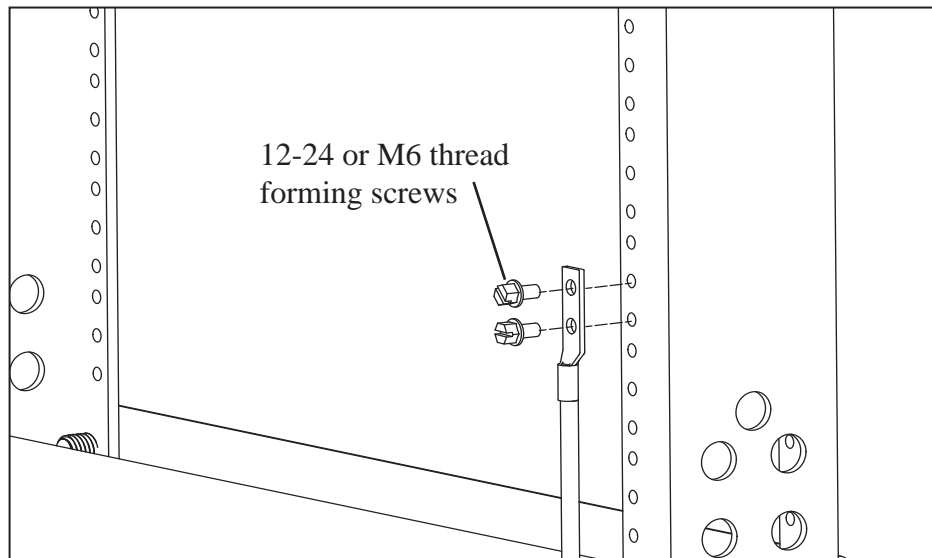


Figure 1 (ground wire)

1. REMOVE SURFACE FINISH FROM EQUIPMENT TO BE GROUNDED TO EXPOSE BARE METAL. A DRILL ATTACHMENT WITH A WIRE CUTTING WHEEL WORKS WELL FOR THIS APPLICATION (HPW PART NUMBER: HGBWB2)
2. CLEAN THE SURFACE OF THE COMPRESSION LUG WITH AN ABRASIVE PAD (HPW PART NUMBER: HGB24AP)
3. APPLY PENETROX TO THE ENTIRE BOTTOM SURFACE OF THE COMPRESSION LUG.
4. ATTACH THE COMPRESSION LUG TO THE EQUIPMENT, AS SHOWN, USING THE SUPPLIED HARDWARE.
APPLY 35 IN-LBS OF TORQUE TO SECURE THE COMPRESSION LUG PROPERLY.

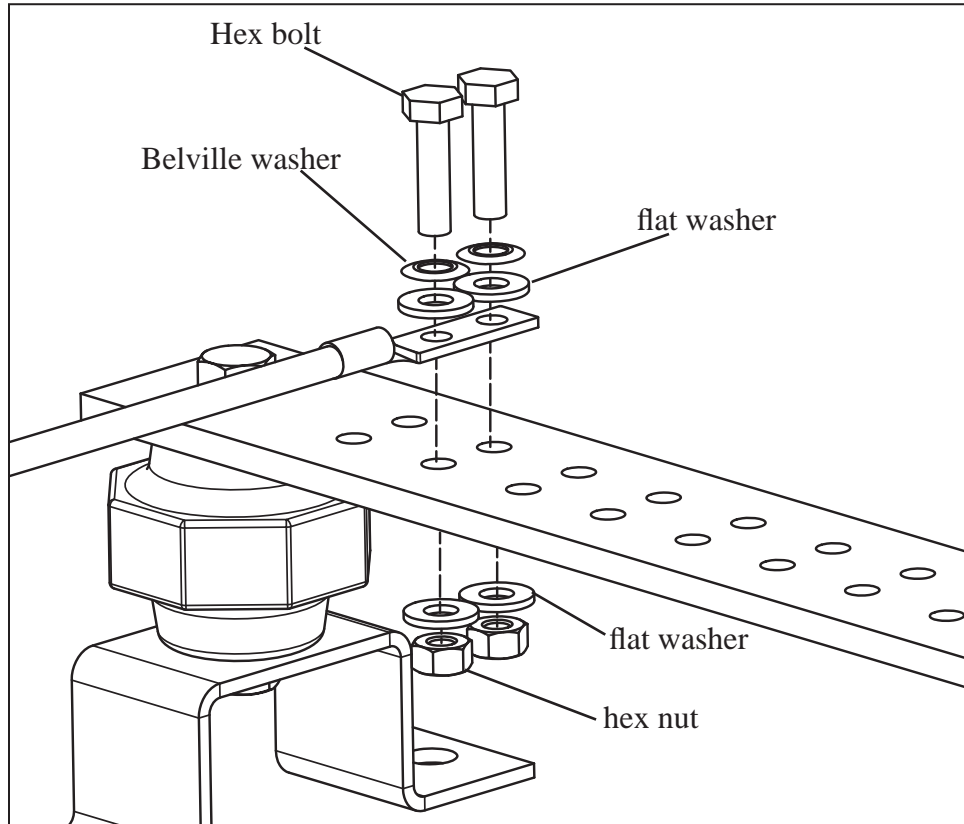


Figure 2 (Busbar)

1. CLEAN BARE COPPER BUSBARS WITH A WIRE BRUSH TO REMOVE OXIDATION. CLEAN TIN PLATED BUSBARS WITH AN ABRASIVE PAD.
2. CLEAN THE SURFACE OF THE COMPRESSION LUG WITH AN ABRASIVE PAD
3. APPLY PENETROX TO THE ENTIRE BOTTOM SURFACE OF THE COMPRESSION LUG.
4. ATTACH THE COMPRESSION LUG TO THE BUSBAR, AS SHOWN, USING THE SUPPLIED HARDWARE.
APPLY 7 FT-LBS OF TORQUE TO SECURE THE COMPRESSION LUG PROPERLY.

Note: The Belleville washers are used to ensure proper torque is maintained in the event of thermal cycling (non climate controlled areas).