



hubbell industrial controls, inc.

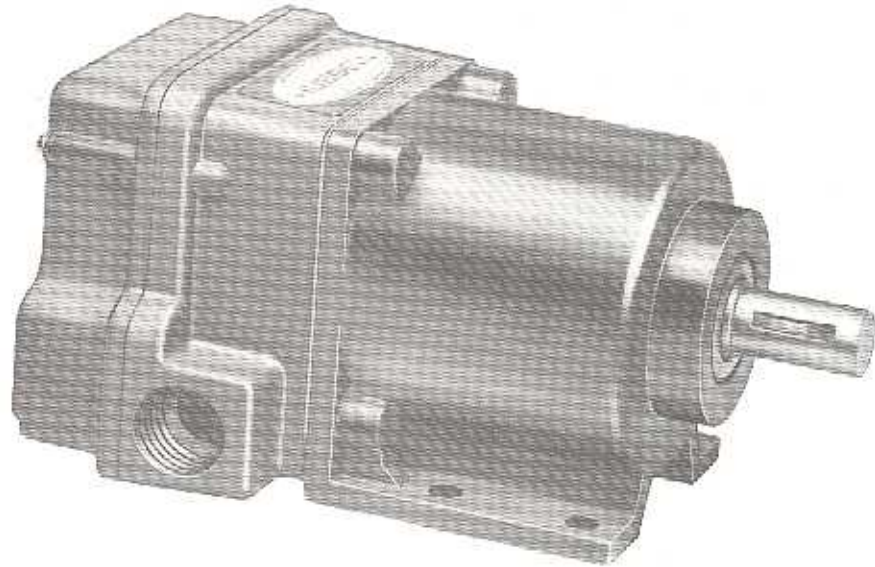
INSTRUCTIONS

2220

Publication No. 135  
April 1985

# REPAIR PARTS

## EUCLID 2220 TYPE F MOTION DETECTOR



USE WITH THE FOLLOWING MOTION DETECTORS:

BASIC SWITCH  
CAT. NUMBER

WITH

ENCLOSURES

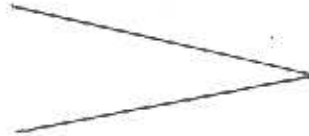
AND

OPTIONS

2220-111CC  
-112CC  
-113CC



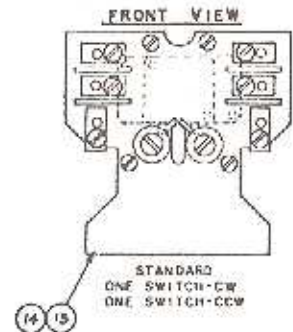
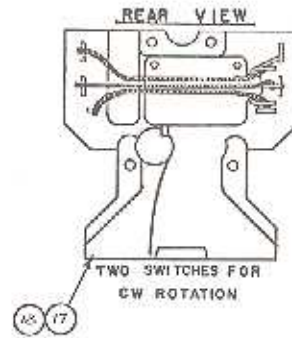
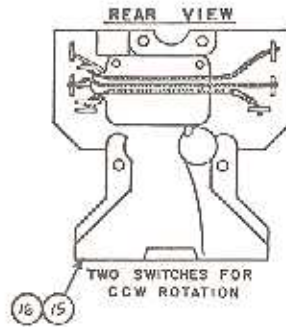
13  
4  
7  
9



2220-121CC  
-122CC  
-123CC

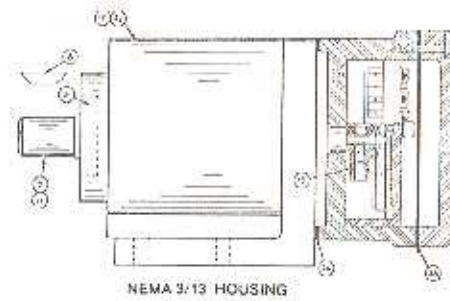
NONE  
F  
S  
FS  
SS

NOTE: WHEN ORDERING REPLACEMENT PARTS, ORDER BY PART NAME AND PART NUMBER. ALSO, GIVE CATALOG NO. AND SERIAL NO. AS SHOWN ON SWITCH IDENTIFICATION NAME-PLATE.

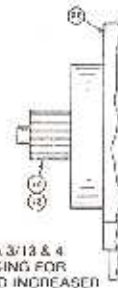


REF. NO.	PART NUMBER	QTY	PART NAME
1	57353-004	1	ZERK FITTING (NEMA 4 SWITCH)
2	57353-002	1	ZERK FITTING (NEMA 9 SWITCH)
3	57497-012	2	SHAFT SEALS (NEMA 4)
4	57497-001	2	SHAFT SEALS (NEMA 9)
5	57497-007	1	SHAFT SEAL (NEMA 13)
6	30425-000	1	SEAL RETAINING WASHER
7	30419-000	1	SEAL SPACER
8	57458-002	1	WOODRUFF KEY NO. 11
9	55077-001	1	ROTOR MODULE (NEMA 13)
10	55077-003	1	ROTOR MODULE FOR SPD. INC. (NEMA 4 & 13)
11	55077-002	1	ROTOR MODULE (NEMA 4 & XP UNITS)
12	55077-004	1	ROTOR MODULE FOR SPD. INC. (XP SWITCH)
13	55080-001	1	TERMINAL BOARD ASS'Y (111 CC)
14	55080-002	1	TERMINAL BOARD ASS'Y (121 CC)
15	55080-003	1	TERMINAL BOARD ASS'Y (112 CC)
16	55080-004	1	TERMINAL BOARD ASS'Y (122 CC)
17	55080-005	1	TERMINAL BOARD ASS'Y (113 CC)
18	55080-005	1	TERMINAL BOARD ASS'Y (123 CC)
19	55079-000	1	SWITCH ACTUATOR ASS'Y
20	25711-000	1	MAIN HOUSING (NEMA 13)
21	30540-000	1	MAIN HOUSING (NEMA 4)
22	30080-000	1	MAIN HOUSING FOR SPD. INC. (NEMA 4 & 13)
23	25715-000	1	MAIN HOUSING FLANGE MTG.
24	30359-000	1	MAIN HOUSING "A" FLANGE MTG. FOR INT. SPD. INC.
25	30358-000	1	MAIN HOUSING "B" FLANGE MTG. FOR INT. SPD. INC.
26	25819-000	1	MAIN HOUSING GASKET
27	30656-000	1	CONTACT HOUSING
28	30655-000	1	COVER GASKET
29	55062-009	1	REAR COVER ASS'Y
30	30053-000	1	REAR COVER (XP SWITCH)
31	30050-000	1	MAIN HOUSING (NEMA 7)
32	30415-000	1	MAIN HOUSING (NEMA 9)
33	30058-000	1	MAIN HOUSING FOR SPD. INC. (NEMA 7 & 9)
34	30182-000	1	MAIN HOUSING FLANGE MTG. (NEMA 7 & 9)

\*RECOMMENDED PARTS FOR MAINTENANCE



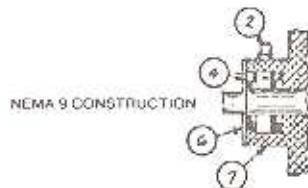
NEMA 3/13 HOUSING



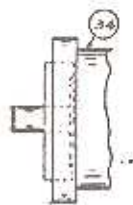
NEMA 3/13 & 4 HOUSING FOR SPEED INCREASED



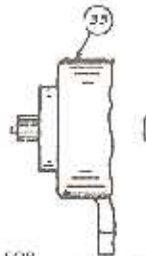
NEMA 4 CONSTRUCTION



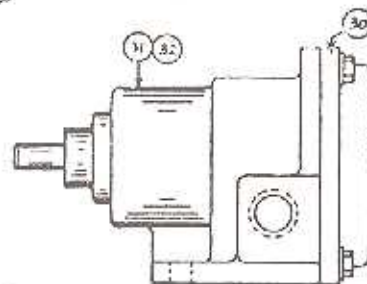
NEMA 9 CONSTRUCTION



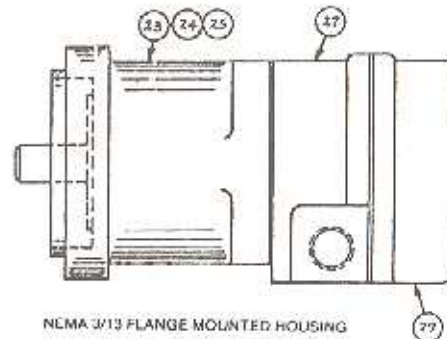
FLANGE MOUNTED



FOR SPEED INCREASES



STANDARD



NEMA 3/13 FLANGE MOUNTED HOUSING

NEMA 7 & 9 EXPLOSION-PROOF HOUSINGS



Hubbell Industrial Controls, Inc.  
a subsidiary of HUBBELL INCORPORATED  
50 Edwards Street, Madison, Ohio 44057  
Telephone (216) 428-1161 • FAX 216-428-7635