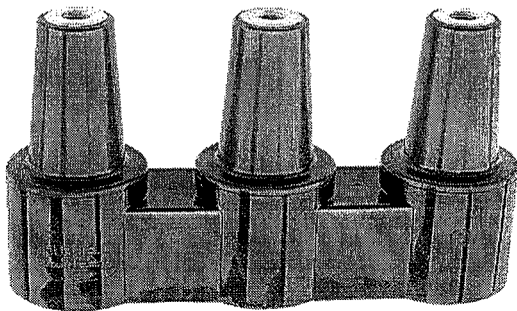




# Installation & Operating Instructions

## DESCRIPTION

Hubbell Power Systems 600 amp Deadbreak Junctions are available in two-, three-, and four-point versions. The Deadbreak Junction is available with stainless steel mounting bracket or U-straps for surface-mounting. All interfaces meet the requirements of IEEE Std. 386 - latest version.



## CONTENTS OF PACKAGE

- 1 - Deadbreak Junction
- 1 - Shipping Cap (not for energized operation) per Interface
- 1 - Bracket and Base Plate OR Surface Mounting U-Straps
- 1 - Packet of Grease per Interface
- 1 - Instruction Sheet

**Important:** Read these instructions thoroughly before operating the system. Be sure that the connectors are rated for the intended energized use. (See Hubbell catalogs (C1 and C2) for selecting the correct mating product.) Visually inspect parts for damage before using.

### ! CAUTION

The equipment covered by these instructions should be installed, operated and serviced only by competent personnel trained in good safety practices. This instruction is written for such personnel and is not intended as a substitute for adequate training and experience in safe procedures for this type of equipment.

### ! DANGER

All apparatus must be de-energized during installation or removal of parts. Do not touch or move energized product by hand. Failure to follow this instruction may result in serious or fatal injury, as well as damage to the product.

### ! DANGER

Remove all protective shipping caps and replace with an approved insulating cap or connector prior to the junction being submersed or the circuit energized. The protective shipping caps are intended to keep the interfaces clean during shipping and handling and should never be used on energized equipment.

These instructions do not purport to cover all details or variations in equipment nor to provide for every possible contingency to be met in connection with installation, operation or maintenance. Should further information be desired or should particular problems arise which are not covered sufficiently for the purchaser's purposes, the matter should be referred to Hubbell Power Systems, Inc.

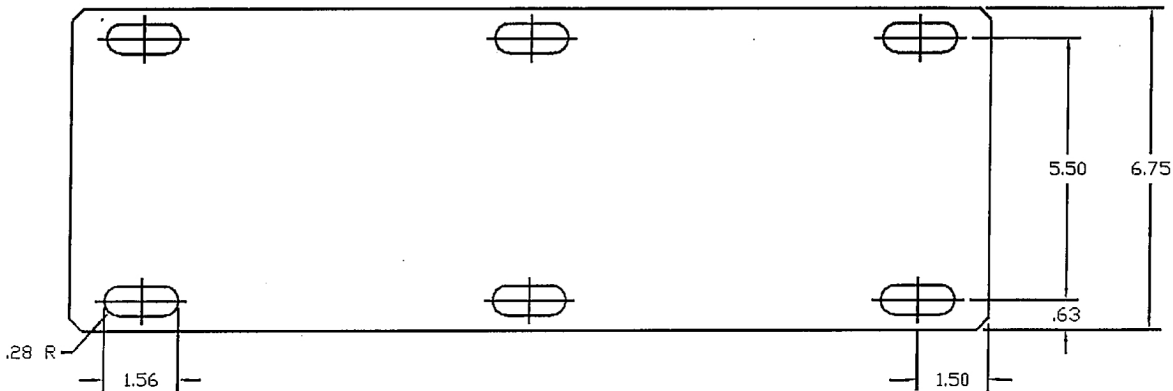


INSTALLATION INSTRUCTIONS  
600 AMP  
2-, 3-, 4- POINT  
DEADBREAK JUNCTIONS

Section A - Flat Mount Bracket and Base Plate

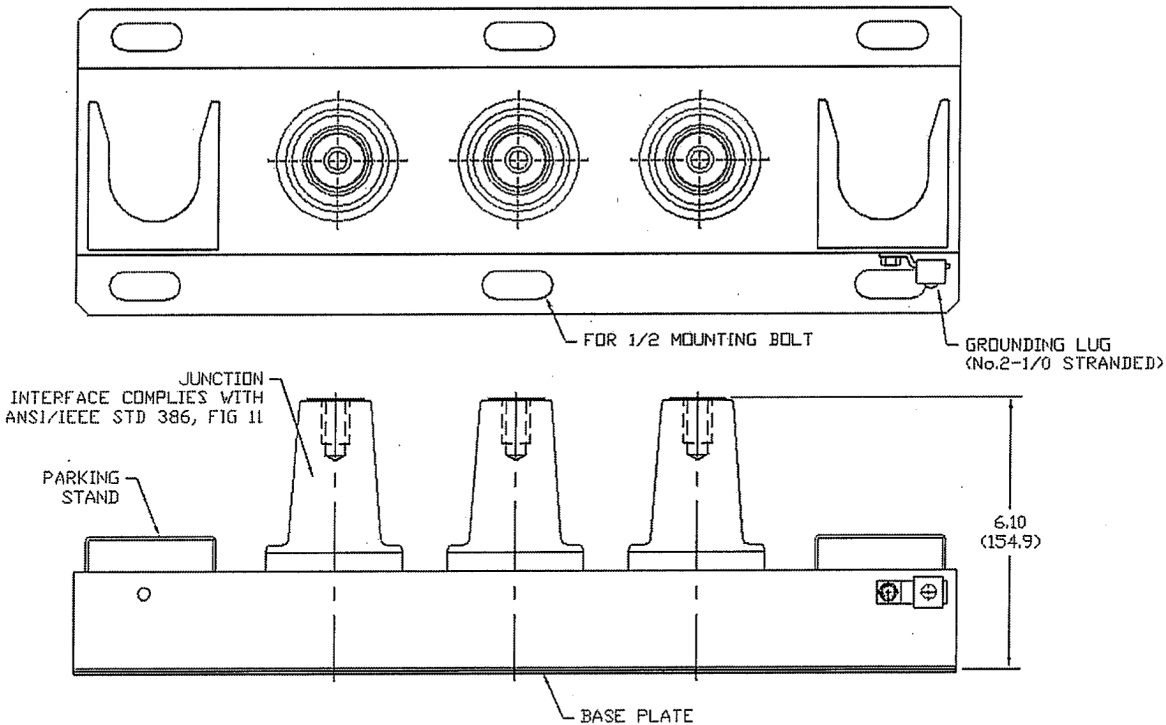
Step 1. Determine Location

Identify the location for the junction assembly. Mark the location for the junction assembly using the base plate slots as a template.



Step 2. Assemble Deadbreak Junction

Attach deadbreak junction to bracket and base plate using 1/2" diameter screws, 1/2" split lock washers, and 1/2" nuts (supplied by user). Attach deadbreak junction assembly to flat surface and tighten securely to prevent movement during operation. The parking stands should be in an upright position.



Step 3. Ground Bracket

Use the grounding lug provided to ground the bracket and the junction's conductive jacket. The grounding lug is compatible with wire sizes of No. 2 to 1/0 stranded (supplied by user).

INSTALLATION INSTRUCTIONS  
600 AMP  
2-, 3-, 4- POINT  
DEADBREAK JUNCTIONS

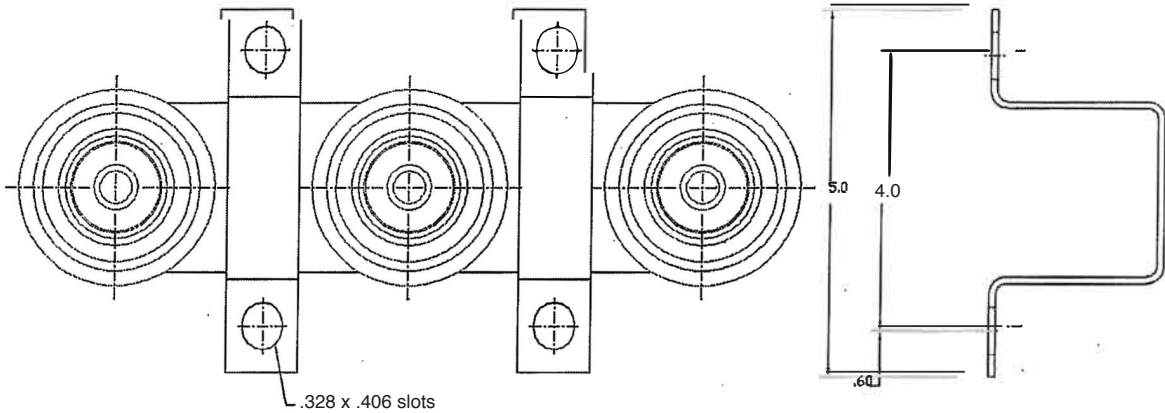
Section B – Surface Mount

Step 1. Determine Location

Identify the location for the junction assembly. Mark the location for the junction assembly using the U-strap holes as a template.

Step 2. Mount Deadbreak Junction

Attach deadbreak junction to a flat metallic surface\* using the U-strap(s) provided. Use 5/16" diameter screws and 5/16" split lock washers (supplied by user). Tighten securely to prevent movement during operation. Important: The base of the deadbreak junction conductive jacket must be grounded via contact with the conductive mounting surface.



\* If the deadbreak junction is mounted on a non-metallic surface, a metallic back plate is required. Contact your HPS representative.

OPERATING INSTRUCTIONS

Step 1. Prepare Interfaces

Remove the protective caps and wipe interfaces clean. Do not energize protective caps. Lubricate the interfaces using one tube of lubricant per interface. Do not substitute lubricant.

Step 2. Attach Connecting Parts

Ensure that the system is de-energized. 600 A insulating caps must be attached to any unused deadbreak junction interfaces prior to energization.