

Installation & Operating Instructions

15/25kV, 600 Ampere TapMaster Junctions

DESCRIPTION

Hubbell 600A TapMaster Junctions are used in underground vaults and sectionalizing cabinets. They are available in 3 to 6 points of any combination of 600A bushing or 200A well interfaces. They provide a flexible means to splice and sectionalize feeders or to create either 200A or 600A lateral taps.

The TapMaster junctions meet the requirements of IEEE Std. 386.

CONTENTS

Deadbreak Junction
Instruction Sheet
Lubricant (one per interface)

Universal Bracket:
(2) Adjustable Mounting Brackets
(2) Mounting Feet
(2) Parking Stands
(1) Ground Lug

Without Bracket:
U-Straps
Back Plate



NOTES

Check contents of box to ensure that it is complete and the components are NOT damaged.

INSTALLATION TOOLS

Hand Tools

Important: Read these instructions thoroughly before operating the system. Be sure that the connectors are rated for the intended energized use. Visually inspect parts for damage before using.

CAUTION

The equipment covered by these instructions should be installed, operated and serviced only by competent personnel trained in good safety practices. This instruction is written for such personnel and is not intended as a substitute for adequate training and experience in safe procedures for this type of equipment.

DANGER

All apparatus must be de-energized during installation or removal of parts. Do not touch or move energized product by hand. Failure to follow this instruction may result in serious or fatal injury, as well as damage to the product.

DANGER

Remove all protective shipping caps and replace with an approved insulating cap or connector prior to the junction being submersed or the circuit energized. The protective shipping caps are intended to keep the interfaces clean during shipping and handling and should never be used on energized equipment.

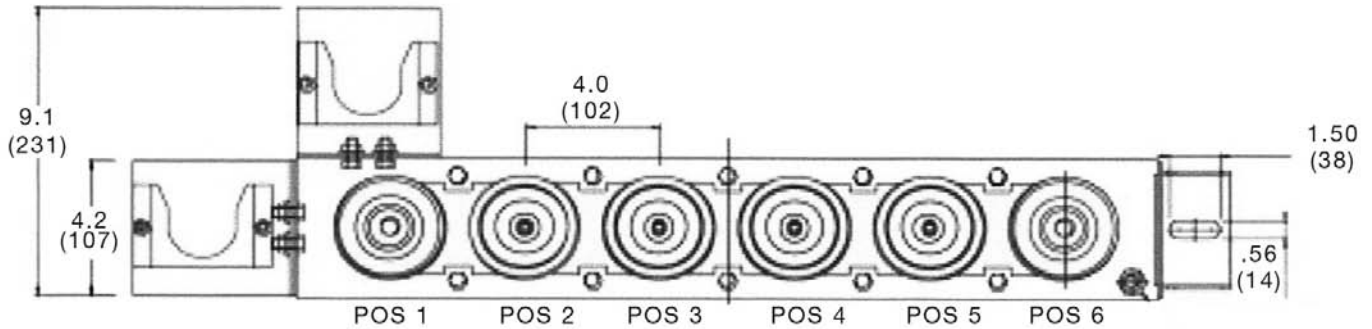
These instructions do not purport to cover all details or variations in equipment nor to provide for every possible contingency to be met in connection with installation, operation or maintenance. Should further information be desired or should particular problems arise which are not covered sufficiently for the purchaser's purposes, the matter should be referred to Hubbell Power Systems, Inc.

INSTALLATION

TapMaster with SS Bracket

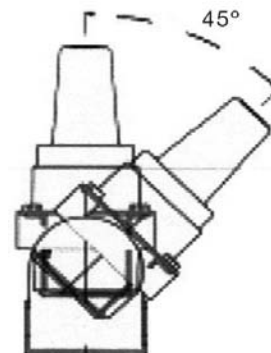
Step 1 – Attach Parking Stands

Determine the desired location of the parking stands and firmly attach with hardware provided. The typical location is on the ends of the bracket, but depending on the intended use and physical space limitations, they can be assembled either above or below the bracket.



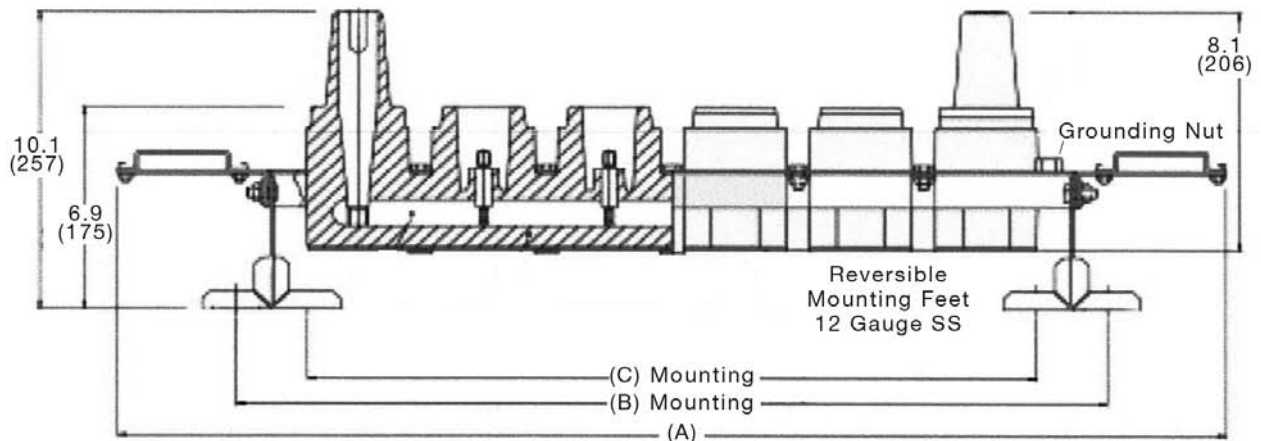
Step 2 – Attach Angle Bracket

Determine operating angle and loosely attach the bracket mounting feet to the adjustable mounting brackets with hardware supplied.



Step 3 – Identify Mounting Location

Determine where junction is to be mounted.



Note Bracket mounting feet can be aligned to face either the inside or outside direction based on the location and spacing of the mounting holes on the wall or in the enclosure.

No. Positions	Dim (A)	Dim (B)	Dim (C)
3	23.3	15.7	11.2
4	27.3	19.7	15.2
5	31.3	23.7	19.2
6	35.3	27.7	23.2

Step 4 – Secure TapMaster

Attach the mounting feet with suitable hardware and tighten securely. Once the TapMaster is in its final location, all hardware should be tightened securely to prevent the junction from moving during operation.

Step 5 – Attach Ground Lug

One ground lug is provided and it should be assembled into one of the two nuts welded to the bracket. The location is left to the user's preference and ease of connection to system ground.



WARNING

Failure to properly ground the TapMaster junction may lead to the presence of hazardous voltage, which can result in serious injury or death.

Installation - TapMaster without SS Bracket

Step 1 – Determine Location

Determine the desired location of the junction. Use the U-straps assembled onto the TapMaster junction as a template to mark the mounting locations. Drill holes accordingly or use preexisting holes if mounting in an enclosure.

Step 2 – Mount Junction

Place back plate onto mounting surface, then assemble TapMaster junction with U-straps and suitable hardware. Tighten all fasteners securely to prevent the junction from moving during operation.

Step 3 – Attach Ground Lug

The TapMaster must be mounted such that the semi-conductive surface is in electrical contact with the grounded metal surface, back plate, and U-straps. Finally, ensure that there is a positive connection to system ground.



WARNING

Failure to properly ground the TapMaster junction may lead to the presence of hazardous voltage, which can result in serious injury or death.

Operating Instructions

Remove all protective shipping caps and wipe the operating interfaces clean. Lubricate each interface with the supplied lubricant or an approved equivalent. Do NOT SUBSTITUTE. Other lubricants may be harmful to this product or a mating connector.

If a position is not to be used, cap it off with an approved insulating cap. Do not use the protective shipping caps for this purpose as they are intended to keep the interfaces clean during shipping and handling.

HUBBELL[®]
Power Systems

**CABLE
ACCESSORIES**



1850 Richland Ave. East • Aiken, SC 29801 • Phone: 573-682-5521 • Fax: 573-682-8714
E-mail: hpsliterature@hps.hubbell.com • Website: <http://www.hubbellpowersystems.com>

NOTE: Because Hubbell has a policy of continuous product improvement, we reserve the right to change design and specifications without notice.

© Copyright 2006 Hubbell Power Systems

Printed in U.S.A.

IS925TM Rev. A 12/10