



KILLARK

HUBBELL INCORPORATED (Delaware)
2112 Fenton Logistics Park Blvd
Fenton, Missouri 63026 USA

INSTALLATION, OPERATION & MAINTENANCE DATA SHEET UGFI 2P SERIES FACTORY-SEALED, GFCI RECEPTACLE

For use in Class I, Groups B*, C & D; Class II, Groups F & G;
Class III Hazardous Locations and NEMA 3 Raintight **

* Group B locations require conduit seals within 6" of the enclosure

** Groups F, G and Raintight only if receptacle installed in a vertical position (see below).

CAUTION: Before installing, make sure you are compliant with area classifications, failure to do so may result in bodily injury, death and property damage. Do not attempt installation until you are familiar with the following procedures. All installation must comply with the applicable Electrical Code.

Make sure that the circuit is De-energized before starting installation or maintenance.

Verify that the installation is grounded. Failure to ground will create electrical shock hazards, which can cause serious injury and or death.

Important: Please read these instructions carefully before installing or maintaining this equipment. Good electrical practices should be followed at all times and this data should be used as a guide only.

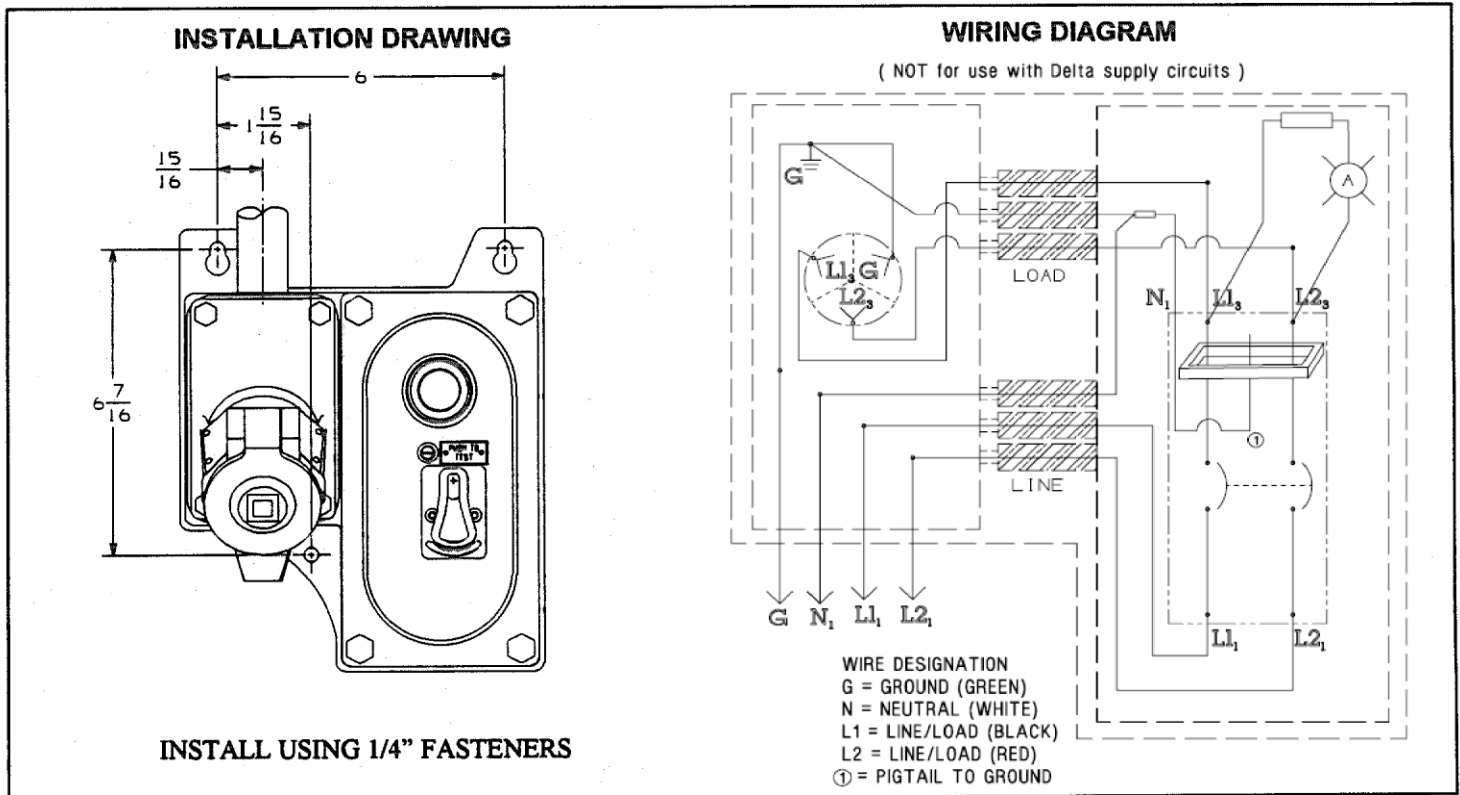
NOTE: All installations must comply with applicable local and/or national electrical codes, as well as safety practices for this type of equipment.

CAUTION: To reduce the risk of ignition of hazardous atmospheres, do not use in Class II, Group F locations that contain electrically conductive dusts.

This receptacle enclosure is for use with 2-pole, 3-wire, 120/240 VAC 60Hz or 120/208 VAC 60Hz grounded; 15 (or 20) Amp, 2 Horsepower maximum circuits. The enclosure is designed for environments as defined in Article 500 of the National Electrical Code.

For use with Killark type "UGP" plugs. Also see Form No. K1092 (provided with this product) for a list of other receptacle/plug combinations.

WARNING: This receptacle enclosure is **NOT** for use with **Delta** supply circuits and are for 120/240 VAC 60Hz or 120/208 VAC 60Hz ground supply systems only.



DIRECTIONS FOR INSTALLATION

Permanent mount GFCI receptacle

- 1.) Securely mount the box in a suitable location and install conduit. Enclosure must be mounted vertically (as shown in drawings) when device is used in a NEMA 3 application.
- 2.) Wire the system, secure the enclosure, and verify the polarity with a continuity check before energizing. When placing the receptacle on the box, align screw holes before contact is made to the seal so that it is not distorted.
- 3.) Turn ON the circuit and test the system. See Killark Form No. K1007 for information on "UGR" receptacles.
- 4.) With circuit breaker handle in "OFF" position, plug the device (requiring ground fault protection) into the receptacle. After both the supply circuit and the load circuit have been connected, the circuit breaker handle can be turned to the "ON" position. The pilot light will light indicating power to the receptacle.

OPERATIONAL DATA

The devices used in this enclosure are electrical arcing devices. The enclosure in which they are installed includes internal seals which isolates these devices from the supply circuit. Depending on your application, additional external seals may be required by NEC articles, 501-5 & 502-5. In addition, the enclosure must be marked with a cautionary statement such as: "CAUTION: Disconnect this device from the supplying circuit before entering. Keep assembly tight while circuits are alive." This statement must be permanently visible after the enclosure has been installed.

If the pilot light does not light with circuit breaker in the "ON" position, check the following conditions:

- a) **Circuit breaker tripped** - Make sure that the circuit breaker has not tripped (turn handle toward "RESET"). Clear the load circuit of all faults before turning "ON".
- b) **Lamp failure** - Disconnect plug from power supply and replace the lamp (unscrew lens guard assembly).
- c) **Circuit breaker/ground fault malfunction** - Replace the circuit breaker.

MAINTENANCE DATA

This device should be checked for proper ground fault operation on a monthly basis. While connected to the power supply, turn circuit breaker handle "ON" and depress the push-to-test button. The circuit breaker should trip and the pilot light should turn off. Turn handle to reset the circuit breaker.

WARNING: Disconnect this device from supplying circuit before entering. **CAUTION:** The surfaces between the covers and the box is a flame path and must be kept clean.

Tighten receptacle and cover screws as follows:

1/4" screws: 5 ft-lbs, 3/8" screws: 23 ft-lbs.

Inspect components for wear before each use. If damaged, the parts must be replaced at once. Refer to the Parts Drawing below and the Killark catalog for specific replacement part numbers.

PARTS DRAWING

