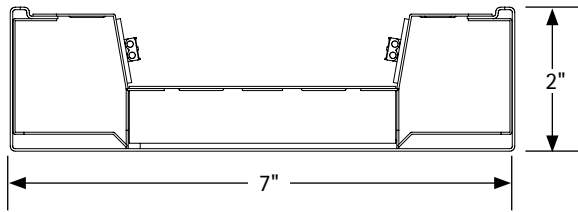
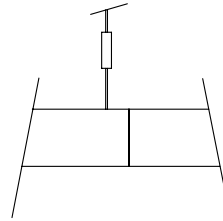
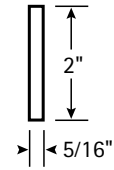


**SECTIONS**


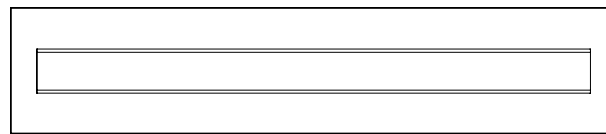
LP7-OA-35ML (shown with standard 80% indirect, 20% direct distribution)



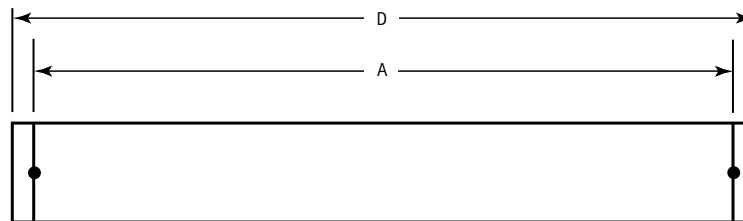
Connection Section



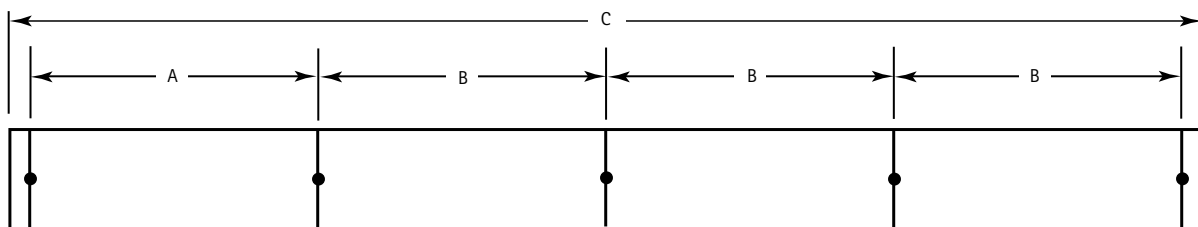
End Section

**BOTTOM VIEW**


Solid Housing

**SINGLE MOUNTING (TYPICAL)**


4', 8'

**ROW MOUNTING**


4', 8'

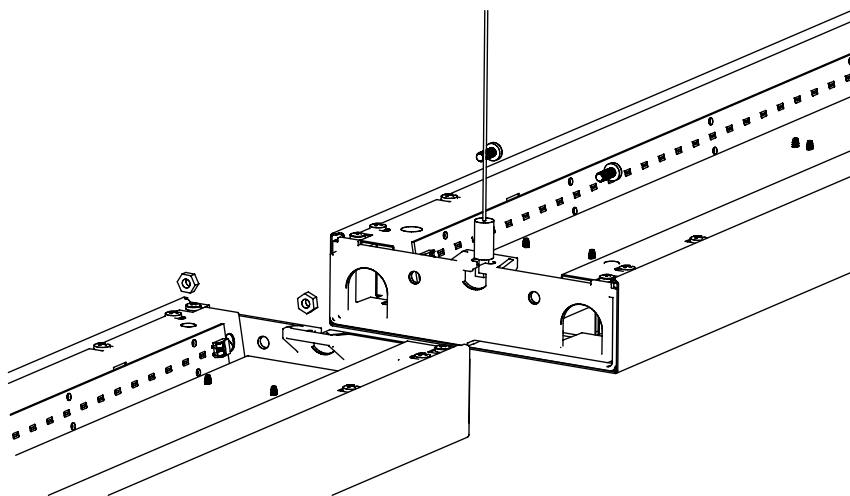
**DATA CHART**

Nominal Length	Blank Distribution (80% Up, 20% Down)	Optional Distributions: (60% Up, 40% Down) (40% Up, 60% Down) (20% Up, 80% Down) (0% Up, 100% Down)	A	B	C	D
4'	14 lbs.	16.3 lbs.	47 1/4"	48"	192 5/8"	48 5/8"
8'	22.5 lbs.	26 lbs.	95 1/4"	96"	384 5/8"	96 5/8"

Note: Suspension data is computed using the standard aircraft cable assembly. The use of rigid stems will yield different data. Please consult factory for stem data.

### Connection Instructions:

1. Install the first fixture of the row with 2 hangers.
2. Slide the inner diecast plates together.
3. Secure and adjust fixture joints with 2 bolts and nuts.  
Attach hanger at opposite fixture end.
4. Repeat steps 2 & 3 until row is complete.
5. Attach and align endcap with 2 screws.



### Suspension Instructions:

1. Set bottom nut to desired fixture height.
2. Adjust upper nut for a minimum of 3/8" between upper and lower nuts.
3. Slide cable hanger into hanger slot.
4. Secure and tighten upper nut.

